

Converting Colors

HunterLab(24.3054, 1.8519,
9.3468)

Have a look what the booklet for
HunterLab(24.3054, 1.8519, 9.3468)
contains.

HunterLab(24.1657, 1.8996, 9.3167)	3
<i>Conversions</i>	4
<i>Details</i>	6
<i>Harmonies</i>	12
<i>Previews</i>	24
<i>Color Blindness Simulation</i>	28
<i>CSS Examples</i>	31

Color

**HunterLab(24.1657, 1.8996,
9.3167)**

Conversions

Conversions Part 1

Format	Color
Hex	54412B
RGB	84, 65, 43
RGB Percent	33%, 25%, 17%
CMY	0.6706, 0.7451, 0.8314
CMYK	0.00, 0.23, 0.49, 0.67
HSL	32°, 32%, 25%
HSV	32°, 49%, 33%
XYZ	5.9825, 5.8398, 3.0974
YIQ	68.1730, 18.3860, -2.8140

Conversions

Conversions Part 2

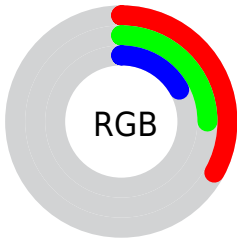
Format	Color
RYB	78, 84, 43
Decimal	5521707
CIELab	29.01, 4.90, 16.54
CIElCh	29, 17.254, 73.484
Yxy	5.8401, 0.4010, 0.3914
Android (android.graphics.Color)	4283711787 (0xFF54412B)
YUV	68.1730, -12.4103, 13.8803
Hunter-Lab	24.1657, 1.8996, 9.3167

Details

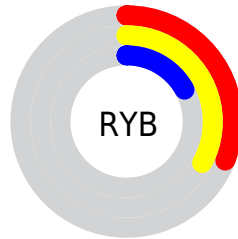
The HunterLab color **24.1657, 1.8996, 9.3167** is a dark color, and the websafe version is hex **333300**. A complement of this color would be **21.4446, -1.5776, -10.0032**, and the grayscale version is **24.1418, -1.2881, 1.3117**.

A 20% lighter version of the original color is **42.0505, 1.5463, 12.6125**, and **10.0257, 2.4599, 6.2209** is the 20% darker color. If you saturate the color by 10%, you get **23.1367, 2.9329, 10.3125**, and if you desaturate by 10%, it is **25.2401, 0.9791, 8.1037**.

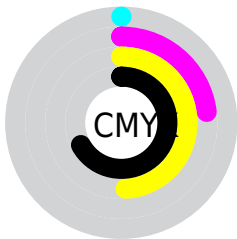
Distribution



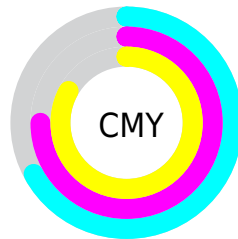
- Red (33%)
- Green (25%)
- Blue (17%)



- Red (31%)
- Yellow (33%)
- Blue (17%)



- Cyan (0%)
- Magenta (23%)
- Yellow (49%)
- Black (67%)



- Cyan (67%)
- Magenta (75%)
- Yellow (83%)

Brightness & Saturation Gradients

These gradients show how the HunterLab color 24.1657, 1.8996, 9.3167 changes by changing the brightness by 10 percent. The first figure shows a shift by +10% for each color and the second figure -10%.

Similar to the brightness gradients but the following saturation gradients show a change of the HunterLab color 24.1657, 1.8996, 9.3167 by changing the saturation by 10% instead.

■ 24.1657, 1.8996,
9.3167

■ 24.1657, 1.8996,
9.3167

■ 125.5566, -1.2740,
22.9161

■ 16.5774, 1.9476,
7.5103

■ 41.9505, 1.5629,
12.5919

■ 10.0084, 1.8908,
7.0059

■ 51.9938, 1.2991,
14.1333

0.0000, INF, NaN

0.0000, NaN, NaN

■ 62.7311, 0.9812,
15.6374

0.0000, NaN, NaN

■ 74.1200, 0.6142,
17.1163

0.0000, NaN, NaN

■ 86.1252, 0.2022,
18.5782

0.0000, NaN, NaN

0.0000, NaN, NaN

■ 98.7166, -0.2516,

111.8681, -0.7444,
21.4740

24.1657, 1.8996,
9.3167

24.1657, 1.8996,
9.3167

23.1367, 2.9329,
10.3125

25.2401, 0.9791,
8.1037

22.1543, 4.0839,
11.0759

26.3554, 0.1705,
6.6880

21.2222, 5.3509,
11.5957

27.5092, -0.5324,
5.0856

20.3432, 6.7287,
11.8664

28.6990, -1.1354,
3.3115

19.5073, 8.1445,
12.0756

29.9224, -1.6447,
1.3798

■ 19.4101, 8.3121,
12.1059

■ 31.1773, -2.0664,
-0.6961

■ 32.4615, -2.4067,
-2.9043

■ 33.7732, -2.6714,
-5.2337

■ 35.1108, -2.8660,
-7.6747

Harmonies

Analogous

The Analogous color harmony consists of three colors that are next to each other on the color wheel.



24.1663, 7.1701, 7.4370



24.1657, 1.8996, 9.3167



24.1663, -3.7891, 9.4049

Triad

The Triadic color harmony groups three colors that are evenly spaced from another and form a triangle on the color wheel.



24.1663, 1.8986, 9.3170



24.1663, -11.0355, -1.2391



24.1663, 6.7077, -7.5191

Complementary

The Complementary color scheme is a pair of colors which are on the opposite of each other on the color wheel.



24.1657, 1.8996, 9.3167



21.4446, -1.5776, -10.0032

Split Complementary

Split-complementary colors differ from the complementary color scheme. The scheme consists of three colors, the original color and two neighbors of the complement color.



24.1663, 1.3134, -11.1504



24.1657, 1.8996, 9.3167



24.1663, -8.7271, -6.9977

Square

The Square scheme is like the rectangle color scheme, but the four colors are evenly spaced on the color wheel.



24.1663, 1.8986, 9.3170



24.1663, -10.9103, 4.0909



24.1663, -4.3228, -10.9401



24.1663, 10.1175, -1.8340

Rectangle

The Rectangle color scheme consists of four colors that form a rectangle on the color wheel.



24.1657, 1.8996, 9.3167



24.1663, -7.0350, 8.4850



24.1663, -4.3228, -10.9401



24.1663, 5.0458, -9.0734

Sweetspot

The Sweet Spot groups the original color and five complimentary colors.



24.1663, 1.8986, 9.3170



36.8713, -0.9800, 5.9744



19.9044, 13.5327, -1.1307



18.5621, -0.4423, 3.1734



69.0652, -3.6851, 3.7524



19.9203, -1.0629, 1.0823

Same Dimension

The Same Dimension uses a secret algorithm to generate beautiful new colors.



24.1663, 1.8986, 9.3170



30.2842, 4.2029, 13.8827



28.8745, -6.3832, 12.9876



14.2977, -0.5688, 1.6374



24.1136, 11.0416, 15.0520



56.3134, 30.0451, 35.2260

Inverse Universe

The Inverse Universe completely reimagines the original color for something new.



21.4446, -1.5776, -10.0032



25.8808, -1.2384, -17.6405



17.0632, 6.9487, -18.5083



14.0444, -0.9060, -0.1409



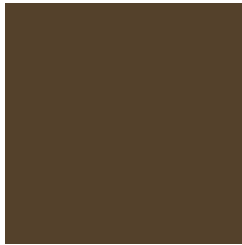
17.7795, 5.0480, -33.1200



40.5633, 16.5188, -86.3598

Previews

White Background



This preview shows how the HunterLab color 24.1657, 1.8996, 9.3167 looks on a white background.

Color Contrast Check

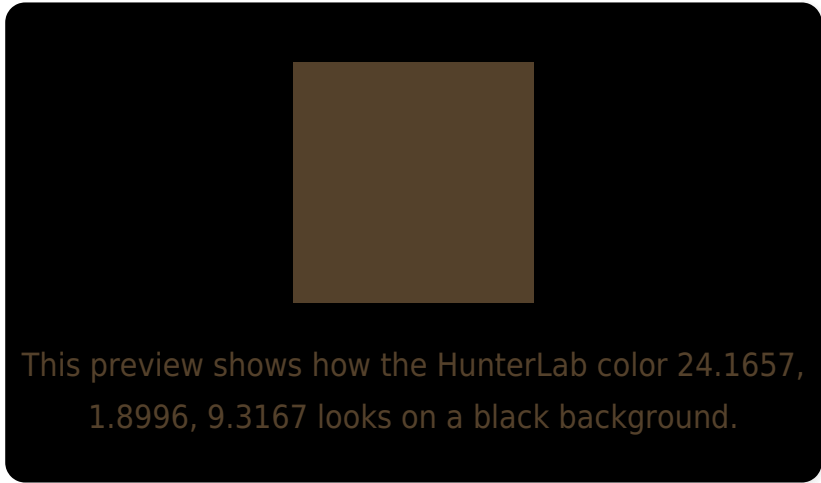
Large Text (above 18pt) WCAG AA ✓ Pass

Any Text WCAG AA ✓ Pass

Large Text (above 18pt) WCAG AAA ✓ Pass

Any Text WCAG AAA ✓ Pass

Black Background



Color Contrast Check

Large Text (above 18pt) WCAG AA × Fail

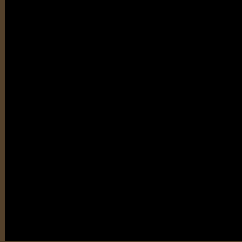
Any Text WCAG AA × Fail

Large Text (above 18pt) WCAG AAA × Fail

Any Text WCAG AAA × Fail

If you want to check with other color combinations, try the [Color Contrast Checker](#).

HunterLab 24.1657, 1.8996, 9.3167 Background



This preview shows how black text looks on a background with the HunterLab color 24.1657, 1.8996, 9.3167.

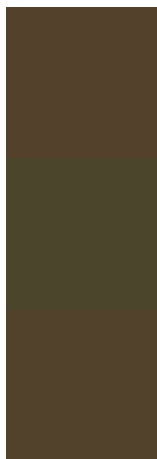


This preview shows how white text looks on a background with the HunterLab color 24.1657, 1.8996,

Color Blindness Simulation

Color vision deficiency is a very complex topic, and I could not describe the different causes any better than Wikipedia does, so if you want to learn more, you should check out their [article about color blindness](#).

Dichromacy



Original Color

24.1657, 1.8996, 9.3167

Protanopia

24.3597, -2.4416, 9.1678

Deuteranopia

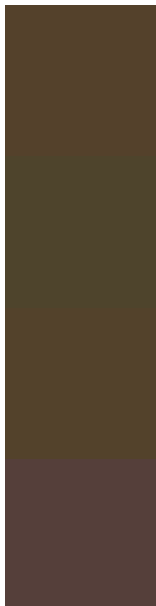
24.3102, 1.1570, 9.4260



Tritanopia

24.1432, 6.3499, 1.9475

Trichromacy



Original Color

24.1657, 1.8996, 9.3167

Protanomaly

24.3635, -1.1413, 9.1938

Deuteranomaly

24.3102, 1.1570, 9.4260

Tritanomaly

24.0662, 4.5193, 5.0467

Monochromacy



Original Color

24.1657, 1.8996, 9.3167

Achromatopsia

24.0428, -1.2829, 1.3063

Achromatomaly

24.0539, -0.3849, 4.6163

CSS Examples

Text

The CSS property to change the color of the text to HunterLab 24.1657, 1.8996, 9.3167 is called "color". The color property can be set on classes, ids or directly on the HTML element.

This example shows how text in the color `rgb(84, 65, 43)` looks like.

```
.text, #text, p{  
    color:rgb(84, 65, 43)  
}
```

If you want to add a text shadow in that color use the text-shadow property, you can generate a text shadow directly with our [CSS Text Shadow Generator](#).

Here you see how black text with a 4 pixel rgb(84, 65, 43) colored shadow looks like.

```
.shadow{ text-shadow: 4px 4px 2px rgb(84, 65, 43) }
```

Border

The CSS property to change the border of an element to HunterLab 24.1657, 1.8996, 9.3167 is called "border". The border property can be set on classes, ids or directly on the HTML element.

This example shows the color as border, it can be applied via the CSS property "border" or "border-color".

```
.border, #border, table{ border:4px solid rgb(84, 65, 43) }
```


If only the border color should be changed use the property `border-color`.

```
.border{ border-color:rgb(84, 65, 43) }
```

If you want to add a box shadow in that color use:

Here you see how a box with a 4 pixel `rgb(84, 65, 43)` colored shadow looks like.

```
.boxshadow{ -moz-box-shadow:4px 4px 4px  
4px rgb(84, 65, 43); -webkit-box-  
shadow:4px 4px 4px 4px rgb(84, 65, 43);  
box-shadow:4px 4px 4px 4px rgb(84, 65, 43)  
}
```

Background

The CSS property to change the background color of an element to HunterLab 24.1657, 1.8996, 9.3167 is called "background". The background property can be set on classes, ids or directly on the HTML element.

```
.background, #background, body{  
background: rgb(84, 65, 43) }
```

If only the background color should be changed can be used:

```
.background{ background-color: rgb(84, 65,  
43) }
```

This example shows the color as background, it is applied via the CSS property "background".

To optimize and compress your CSS code, you can use our [online CSS compressor and optimizer](#) based on csstidy. If you want to create a linear or radial gradient as background or border, check our [CSS Gradient Generator](#).

Hey! You found this booklet interesting? Support Converting Colors with the new Membership Option!

The pro membership hides all ads, plus gives you double the colors in the color bucket, and more awesome pro features!

[Learn more, Memberships starting at \\$2.50/m!](#)

**Follow me
on Twitter!**

@ConvertingColor