

Converting Colors

HunterLab(24.3936, 7.6515,
1.9720)

Have a look what the booklet for
HunterLab(24.3936, 7.6515, 1.9720)
contains.

HunterLab(24.4672, 7.4178, 1.9541)	3
<i>Conversions</i>	4
<i>Details</i>	6
<i>Harmonies</i>	12
<i>Previews</i>	24
<i>Color Blindness Simulation</i>	28
<i>CSS Examples</i>	31

Color

**HunterLab(24.4672, 7.4178,
1.9541)**

Conversions

Conversions Part 1

Format	Color
Hex	593E44
RGB	89, 62, 68
RGB Percent	35%, 24%, 27%
CMY	0.6510, 0.7569, 0.7333
CMYK	0.00, 0.30, 0.24, 0.65
HSL	347°, 18%, 30%
HSV	347°, 30%, 35%
XYZ	6.8858, 5.9864, 6.2614
YIQ	70.7570, 14.1660, 7.5900

Conversions

Conversions Part 2

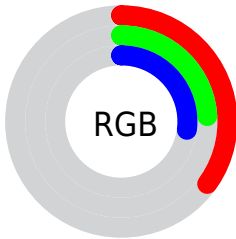
Format	Color
RYB	89, 62, 68
Decimal	5848644
CIELab	29.38, 12.84, 1.04
CIElCh	29, 12.883, 4.639
Yxy	5.9867, 0.3599, 0.3129
Android (android.graphics.Color)	4284038724 (0xFF593E44)
YUV	70.7570, -1.3592, 15.9991
Hunter-Lab	24.4672, 7.4178, 1.9541

Details

The HunterLab color $[24.4672, 7.4178, 1.9541]$ is a dark color, and the websafe version is hex 663333 . A complement of this color would be $[29.6539, -9.0326, 1.7514]$, and the grayscale version is $[25.0173, -1.3349, 1.3592]$.

A 20% lighter version of the original color is $[42.4126, 8.0300, 3.1769]$, and $[10.1399, 6.2524, 0.9799]$ is the 20% darker color. If you saturate the color by 10%, you get $[22.3990, 10.5449, 2.2715]$, and if you desaturate by 10%, it is $[26.6924, 4.3406, 1.7685]$.

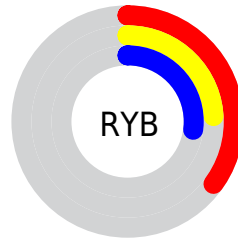
Distribution



 Red (35%)

 Green (24%)

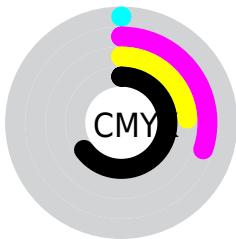
 Blue (27%)



 Red (35%)

 Yellow (24%)

 Blue (27%)

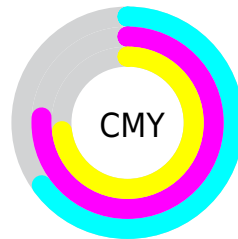



 Cyan (0%)

 Magenta (30%)

 Yellow (24%)

 Black (65%)



 Cyan (65%)

 Magenta (76%)

 Yellow (73%)

Brightness & Saturation Gradients

These gradients show how the HunterLab color 24.4672, 7.4178, 1.9541 changes by changing the brightness by 10 percent. The first figure shows a shift by +10% for each color and the second figure -10%.

Similar to the brightness gradients but the following saturation gradients show a change of the HunterLab color 24.4672, 7.4178, 1.9541 by changing the saturation by 10% instead.

■ 24.4672, 7.4178,
1.9541

■ 24.4672, 7.4178,
1.9541

■ 126.0781, 7.6996,
7.9479

■ 16.8434, 6.9438,
1.4646

■ 42.3126, 8.0068,
3.0537

■ 10.2335, 6.3129,
1.0178

■ 52.3827, 8.1607,
3.6582

0.0000, INF, NaN

■ 63.1450, 8.2369,
4.2967

0.0000, NaN, NaN

■ 74.5576, 8.2441,
4.9675

0.0000, NaN, NaN

■ 86.5852, 8.1890,
5.6692

0.0000, NaN, NaN

■ 99.1980, 8.0770,

0.0000, NaN, NaN

112.3699, 7.9127,
7.1605

■ 24.4672, 7.4178,
1.9541

■ 24.4672, 7.4178,
1.9541

■ 22.3990, 10.5449,
2.2715

■ 26.6924, 4.3406,
1.7685

■ 20.5137, 13.6784,
2.7375

■ 29.0502, 1.3366,
1.6945

■ 18.8438, 16.7316,
3.3652

■ 31.5223, -1.5899,
1.7151

■ 17.4239, 19.5684,
4.1536

■ 34.0938, -4.4418,
1.8154

■ 16.2865, 22.0039,
5.0788

■ 36.7523, -7.2261,
1.9827

■ 15.4508, 23.8500,
6.0828

■ 39.4880, -9.9512,
2.2068

■ 14.7430, 25.5849,
6.9133

■ 42.2927, -12.6255,
2.4792

■ 45.1598, -15.2569,
2.7931

■ 48.0835, -17.8527,
3.1428

Harmonies

Analogous

The Analogous color harmony consists of three colors that are next to each other on the color wheel.



24.4678, 6.5547, -2.2513



24.4672, 7.4178, 1.9541



24.4678, 5.8137, 5.3647

Triad

The Triadic color harmony groups three colors that are evenly spaced from another and form a triangle on the color wheel.



24.4678, 7.4169, 1.9546



24.4678, -5.7967, 6.9209



24.4678, -4.7218, -6.8198

Complementary

The Complementary color scheme is a pair of colors which are on the opposite of each other on the color wheel.



24.4672, 7.4178, 1.9541



29.6539, -9.0326, 1.7514

Split Complementary

Split-complementary colors differ from the complementary color scheme. The scheme consists of three colors, the original color and two neighbors of the complement color.



24.4678, -7.6961, -3.5312



24.4672, 7.4178, 1.9541



24.4678, -8.2862, 4.4436

Square

The Square scheme is like the rectangle color scheme, but the four colors are evenly spaced on the color wheel.



24.4678, 7.4169, 1.9546



24.4678, -1.9667, 7.9023



24.4678, -8.9572, 0.6923



24.4678, -0.6399, -7.7912

Rectangle

The Rectangle color scheme consists of four colors that form a rectangle on the color wheel.



24.4672, 7.4178, 1.9541



24.4678, 3.6232, 6.8788



24.4678, -8.9572, 0.6923



24.4678, -5.8750, -5.9240

Sweetspot

The Sweet Spot groups the original color and five complimentary colors.



24.4678, 7.4169, 1.9546



38.3007, 1.3401, 2.2120



24.4789, 8.6932, -7.6556



19.1201, 0.8679, 1.1146



70.1359, -3.7423, 3.8106



20.7927, -1.1094, 1.1297

Same Dimension

The Same Dimension uses a secret algorithm to generate beautiful new colors.



24.4678, 7.4169, 1.9546



30.1159, 12.4691, 2.8161



25.9861, 3.5003, 5.6748



14.5817, 0.4293, 0.8381



17.8804, 30.9848, 8.7318



42.2412, 72.9289, 22.7254

Inverse Universe

The Inverse Universe completely reimagines the original color for something new.



24.4678, 7.4169, 1.9546



30.1159, 12.4691, 2.8161



27.8389, -5.1672, -3.0650



14.5817, 0.4293, 0.8381



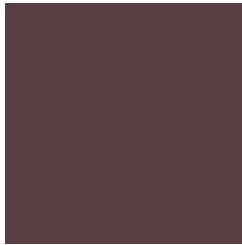
17.8804, 30.9848, 8.7318



42.2412, 72.9289, 22.7254

Previews

White Background



This preview shows how the HunterLab color 24.4672, 7.4178, 1.9541 looks on a white background.

Color Contrast Check

Large Text (above 18pt) WCAG AA ✓ Pass

Any Text WCAG AA ✓ Pass

Large Text (above 18pt) WCAG AAA ✓ Pass

Any Text WCAG AAA ✓ Pass

Black Background



Color Contrast Check

Large Text (above 18pt) WCAG AA × Fail

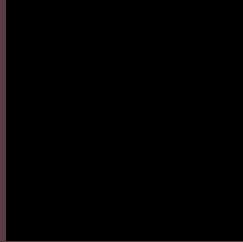
Any Text WCAG AA × Fail

Large Text (above 18pt) WCAG AAA × Fail

Any Text WCAG AAA × Fail

If you want to check with other color combinations, try the [Color Contrast Checker](#).

HunterLab 24.4672, 7.4178, 1.9541 Background



This preview shows how black text looks on a background with the HunterLab color 24.4672, 7.4178, 1.9541.

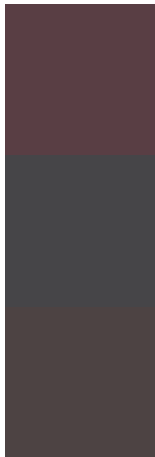


This preview shows how white text looks on a background with the HunterLab color 24.4672, 7.4178,

Color Blindness Simulation

Color vision deficiency is a very complex topic, and I could not describe the different causes any better than Wikipedia does, so if you want to learn more, you should check out their [article about color blindness](#).

Dichromacy



Original Color

24.4672, 7.4178, 1.9541

Protanopia

24.5483, -0.6140, 0.3083

Deuteranopia

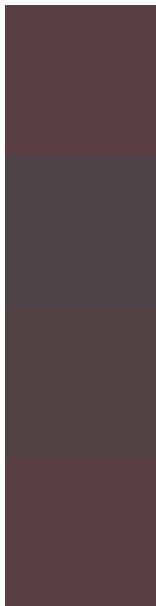
24.4895, 1.4658, 2.2598



Tritanopia

24.4425, 7.2909, 2.3081

Trichromacy



Original Color

24.4672, 7.4178, 1.9541

Protanomaly

24.3498, 2.4428, 0.5319

Deuteranomaly

24.3622, 3.5020, 2.1498

Tritanomaly

24.4425, 7.2909, 2.3081

Monochromacy



Original Color

24.4672, 7.4178, 1.9541

Achromatopsia

25.1018, -1.3394, 1.3638

Achromatomaly

24.8921, 1.7200, 1.5670

CSS Examples

Text

The CSS property to change the color of the text to HunterLab 24.4672, 7.4178, 1.9541 is called "color". The color property can be set on classes, ids or directly on the HTML element.

This example shows how text in the color `rgb(89, 62, 68)` looks like.

```
.text, #text, p{  
    color:rgb(89, 62, 68)  
}
```

If you want to add a text shadow in that color use the text-shadow property, you can generate a text shadow directly with our [CSS Text Shadow Generator](#).

Here you see how black text with a 4 pixel rgb(89, 62, 68) colored shadow looks like.

```
.shadow{ text-shadow: 4px 4px 2px rgb(89, 62, 68) }
```

Border

The CSS property to change the border of an element to HunterLab 24.4672, 7.4178, 1.9541 is called "border".

The border property can be set on classes, ids or directly on the HTML element.

This example shows the color as border, it can be applied via the CSS property "border" or "border-color".

```
.border, #border, table{ border:4px solid rgb(89, 62, 68) }
```


If only the border color should be changed use the property `border-color`.

```
.border{ border-color:rgb(89, 62, 68) }
```

If you want to add a box shadow in that color use:

Here you see how a box with a 4 pixel `rgb(89, 62, 68)` colored shadow looks like.

```
.boxshadow{ -moz-box-shadow:4px 4px 4px  
4px rgb(89, 62, 68); -webkit-box-  
shadow:4px 4px 4px 4px rgb(89, 62, 68);  
box-shadow:4px 4px 4px 4px rgb(89, 62, 68)  
}
```

Background

The CSS property to change the background color of an element to HunterLab 24.4672, 7.4178, 1.9541 is called "background". The background property can be set on classes, ids or directly on the HTML element.

```
.background, #background, body{  
background: rgb(89, 62, 68) }
```

If only the background color should be changed can be used:

```
.background{ background-color: rgb(89, 62,  
68) }
```

This example shows the color as background, it is applied via the CSS property "background".

To optimize and compress your CSS code, you can use our [online CSS compressor and optimizer](#) based on csstidy. If you want to create a linear or radial gradient as background or border, check our [CSS Gradient Generator](#).

Hey! You found this booklet interesting? Support Converting Colors with the new Membership Option!

The pro membership hides all ads, plus gives you double the colors in the color bucket, and more awesome pro features!

[Learn more, Memberships starting at \\$2.50/m!](#)

**Follow me
on Twitter!**

@ConvertingColor