

Converting Colors

HunterLab(24.4637, 4.4052,
1.8080)

Have a look what the booklet for
HunterLab(24.4637, 4.4052, 1.8080)
contains.

HunterLab(24.5702, 4.2310, 2.0173)	3
<i>Conversions</i>	4
<i>Details</i>	6
<i>Harmonies</i>	12
<i>Previews</i>	24
<i>Color Blindness Simulation</i>	28
<i>CSS Examples</i>	31

Color

**HunterLab(24.5702, 4.2310,
2.0173)**

Conversions

Conversions Part 1

Format	Color
Hex	534144
RGB	83, 65, 68
RGB Percent	33%, 25%, 27%
CMY	0.6745, 0.7451, 0.7333
CMYK	0.00, 0.22, 0.18, 0.67
HSL	350°, 12%, 29%
HSV	350°, 22%, 33%
XYZ	6.5010, 6.0369, 6.2915
YIQ	70.7240, 9.7650, 4.7490

Conversions

Conversions Part 2

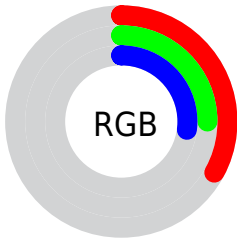
Format	Color
RYB	83, 65, 68
Decimal	5456196
CIELab	29.51, 8.33, 1.14
CIELCh	30, 8.411, 7.776
Yxy	6.0372, 0.3453, 0.3206
Android (android.graphics.Color)	4283646276 (0xFF534144)
YUV	70.7240, -1.3429, 10.7661
Hunter-Lab	24.5702, 4.2310, 2.0173

Details

The HunterLab color **24.5702, 4.2310, 2.0173** is a dark color, and the websafe version is hex **333333**. A complement of this color would be **28.0885, -6.4409, 1.1746**, and the grayscale version is **25.0067, -1.3343, 1.3587**.

A 20% lighter version of the original color is **42.4944, 4.3127, 3.2068**, and **10.2766, 3.9314, 1.0950** is the 20% darker color. If you saturate the color by 10%, you get **22.5249, 7.0216, 2.3509**, and if you desaturate by 10%, it is **26.7410, 1.5110, 1.7777**.

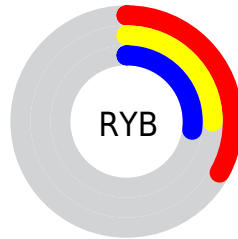
Distribution



 Red (33%)

 Green (25%)

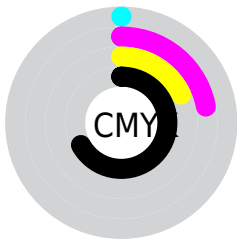
 Blue (27%)



 Red (33%)

 Yellow (25%)

 Blue (27%)

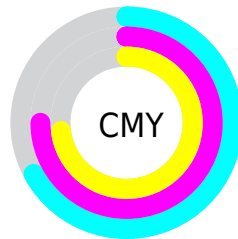


 Cyan (0%)

 Magenta (22%)

 Yellow (18%)

 Black (67%)



 Cyan (67%)

 Magenta (75%)

 Yellow (73%)

Brightness & Saturation Gradients

These gradients show how the HunterLab color 24.5702, 4.2310, 2.0173 changes by changing the brightness by 10 percent. The first figure shows a shift by +10% for each color and the second figure -10%.

Similar to the brightness gradients but the following saturation gradients show a change of the HunterLab color 24.5702, 4.2310, 2.0173 by changing the saturation by 10% instead.

■ 24.5702, 4.2310,
2.0173

■ 24.5702, 4.2310,
2.0173

■ 126.2559, 2.5572,
8.0577

■ 16.9344, 4.0493,
1.5202

■ 42.4362, 4.2986,
3.1297

■ 10.3105, 3.7366,
1.0647

■ 52.5154, 4.2164,
3.7399

0.0000, INF, NaN

0.0000, NaN, NaN

■ 63.2862, 4.0694,
4.3837

0.0000, NaN, NaN

■ 74.7068, 3.8645,
5.0596

0.0000, NaN, NaN

■ 86.7421, 3.6070,
5.7660

0.0000, NaN, NaN

0.0000, NaN, NaN

■ 99.3621, 3.3010,

112.5410, 2.9501,
7.2662

■ 24.5702, 4.2310,
2.0173

■ 24.5702, 4.2310,
2.0173

■ 22.5249, 7.0216,
2.3509

■ 26.7410, 1.5110,
1.7777

■ 20.6249, 9.8670,
2.7901

■ 29.0180, -1.1315,
1.6179

■ 18.8964, 12.7235,
3.3457

■ 31.3879, -3.7010,
1.5263

■ 17.3692, 15.5124,
4.0204

■ 33.8389, -6.2041,
1.4926

■ 16.0751, 18.1076,
4.8026

■ 36.3620, -8.6492,
1.5083

■ 15.0440, 20.3395,
5.6588

■ 38.9493, -11.0445,
1.5660

■ 14.2754, 22.0930,
6.5153

■ 41.5946, -13.3976,
1.6599

■ 13.6757, 23.6485,
7.0662

■ 44.2928, -15.7156,
1.7850

■ 47.0393, -18.0044,
1.9372

Harmonies

Analogous

The Analogous color harmony consists of three colors that are next to each other on the color wheel.



24.5708, 3.8518, -0.6714



24.5702, 4.2310, 2.0173



24.5708, 3.0718, 4.2618

Triad

The Triadic color harmony groups three colors that are evenly spaced from another and form a triangle on the color wheel.



24.5708, 4.2302, 2.0177



24.5708, -4.5120, 5.0378



24.5708, -3.3080, -3.8693

Complementary

The Complementary color scheme is a pair of colors which are on the opposite of each other on the color wheel.



24.5702, 4.2310, 2.0173



28.0885, -6.4409, 1.1746

Split Complementary

Split-complementary colors differ from the complementary color scheme. The scheme consists of three colors, the original color and two neighbors of the complement color.



24.5708, -5.4092, -1.9974



24.5702, 4.2310, 2.0173



24.5708, -6.0824, 3.1898

Square

The Square scheme is like the rectangle color scheme, but the four colors are evenly spaced on the color wheel.



24.5708, 4.2302, 2.0177



24.5708, -2.0337, 5.8742



24.5708, -6.4034, 0.6372



24.5708, -0.5825, -4.2731

Rectangle

The Rectangle color scheme consists of four colors that form a rectangle on the color wheel.



24.5702, 4.2310, 2.0173



24.5708, 1.6132, 5.2736



24.5708, -6.4034, 0.6372



24.5708, -4.1071, -3.3816

Sweetspot

The Sweet Spot groups the original color and five complimentary colors.



24.5708, 4.2302, 2.0177



36.2037, 0.4254, 2.2152



24.7202, 5.5530, -4.2984



17.9470, 0.2413, 1.1016



67.9972, -3.6282, 3.6944



19.0543, -1.0167, 1.0353

Same Dimension

The Same Dimension uses a secret algorithm to generate beautiful new colors.



24.5708, 4.2302, 2.0177



30.6579, 7.4003, 2.8425



25.9372, 1.2345, 4.5713



13.8173, 0.3601, 0.8682



17.3720, 29.9907, 9.3606



41.6034, 71.5937, 24.1958

Inverse Universe

The Inverse Universe completely reimagines the original color for something new.



24.5708, 4.2302, 2.0177



30.6579, 7.4003, 2.8425



26.5637, -3.5114, -1.9589



13.8173, 0.3601, 0.8682



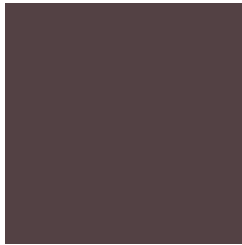
17.3720, 29.9907, 9.3606



41.6034, 71.5937, 24.1958

Previews

White Background



This preview shows how the HunterLab color 24.5702, 4.2310, 2.0173 looks on a white background.

Color Contrast Check

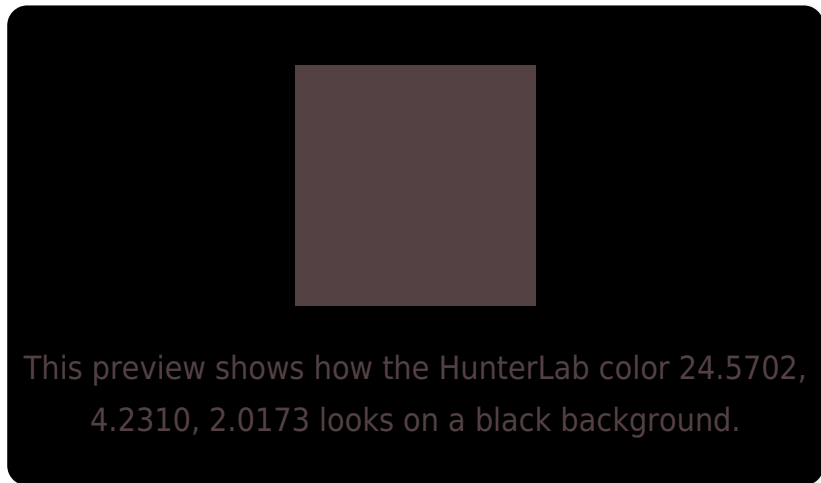
Large Text (above 18pt) WCAG AA ✓ Pass

Any Text WCAG AA ✓ Pass

Large Text (above 18pt) WCAG AAA ✓ Pass

Any Text WCAG AAA ✓ Pass

Black Background



Color Contrast Check

Large Text (above 18pt) WCAG AA × Fail

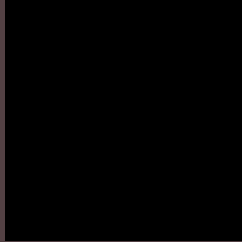
Any Text WCAG AA × Fail

Large Text (above 18pt) WCAG AAA × Fail

Any Text WCAG AAA × Fail

If you want to check with other color combinations, try the [Color Contrast Checker](#).

HunterLab 24.5702, 4.2310, 2.0173 Background



This preview shows how black text looks on a background with the HunterLab color 24.5702, 4.2310, 2.0173.

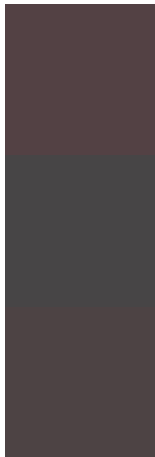


This preview shows how white text looks on a background with the HunterLab color 24.5702, 4.2310,

Color Blindness Simulation

Color vision deficiency is a very complex topic, and I could not describe the different causes any better than Wikipedia does, so if you want to learn more, you should check out their [article about color blindness](#).

Dichromacy



Original Color

24.5702, 4.2310, 2.0173

Protanopia

24.5724, -0.6356, 1.1493

Deuteranopia

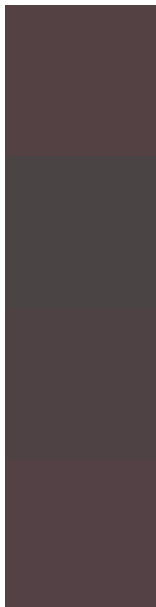
24.5142, 1.5983, 1.9066



Tritanopia

24.6207, 4.4960, 1.2963

Trichromacy



Original Color

24.5702, 4.2310, 2.0173

Protanomaly

24.6166, 0.7396, 1.6210

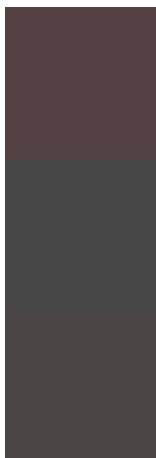
Deuteranomaly

24.4460, 2.6081, 1.8453

Tritanomaly

24.5953, 4.3625, 1.6595

Monochromacy



Original Color

24.5702, 4.2310, 2.0173

Achromatopsia

25.1018, -1.3394, 1.3638

Achromatomaly

24.8883, 0.4477, 1.5404

CSS Examples

Text

The CSS property to change the color of the text to HunterLab 24.5702, 4.2310, 2.0173 is called "color". The color property can be set on classes, ids or directly on the HTML element.

This example shows how text in the color `rgb(83, 65, 68)` looks like.

```
.text, #text, p{  
    color:rgb(83, 65, 68)  
}
```

If you want to add a text shadow in that color use the text-shadow property, you can generate a text shadow directly with our [CSS Text Shadow Generator](#).

Here you see how black text with a 4 pixel rgb(83, 65, 68) colored shadow looks like.

```
.shadow{ text-shadow: 4px 4px 2px rgb(83, 65, 68) }
```

Border

The CSS property to change the border of an element to HunterLab 24.5702, 4.2310, 2.0173 is called "border".

The border property can be set on classes, ids or directly on the HTML element.

This example shows the color as border, it can be applied via the CSS property "border" or "border-color".

```
.border, #border, table{ border:4px solid rgb(83, 65, 68) }
```


If only the border color should be changed use the property `border-color`.

```
.border{ border-color:rgb(83, 65, 68) }
```

If you want to add a box shadow in that color use:

Here you see how a box with a 4 pixel `rgb(83, 65, 68)` colored shadow looks like.

```
.boxshadow{ -moz-box-shadow:4px 4px 4px  
4px rgb(83, 65, 68); -webkit-box-  
shadow:4px 4px 4px 4px rgb(83, 65, 68);  
box-shadow:4px 4px 4px 4px rgb(83, 65, 68)  
}
```

Background

The CSS property to change the background color of an element to HunterLab 24.5702, 4.2310, 2.0173 is called "background". The background property can be set on classes, ids or directly on the HTML element.

```
.background, #background, body{  
background: rgb(83, 65, 68) }
```

If only the background color should be changed can be used:

```
.background{ background-color: rgb(83, 65,  
68) }
```

This example shows the color as background, it is applied via the CSS property "background".

To optimize and compress your CSS code, you can use our [online CSS compressor and optimizer](#) based on csstidy. If you want to create a linear or radial gradient as background or border, check our [CSS Gradient Generator](#).

Hey! You found this booklet interesting? Support Converting Colors with the new Membership Option!

The pro membership hides all ads, plus gives you double the colors in the color bucket, and more awesome pro features!

[Learn more, Memberships starting at \\$2.50/m!](#)

**Follow me
on Twitter!**

@ConvertingColor