

Converting Colors

HunterLab(24.5546, 1.2751,
7.0080)

Have a look what the booklet for
HunterLab(24.5546, 1.2751, 7.0080)
contains.

HunterLab(24.6276, 1.3276, 7.0899)	3
<i>Conversions</i>	4
<i>Details</i>	6
<i>Harmonies</i>	12
<i>Previews</i>	24
<i>Color Blindness Simulation</i>	28
<i>CSS Examples</i>	31

Color

**HunterLab(24.6276, 1.3276,
7.0899)**

Conversions

Conversions Part 1

Format	Color
Hex	524335
RGB	82, 67, 53
RGB Percent	32%, 26%, 21%
CMY	0.6784, 0.7372, 0.7922
CMYK	0.00, 0.18, 0.35, 0.68
HSL	29°, 21%, 26%
HSV	29°, 35%, 32%
XYZ	6.1294, 6.0652, 4.2158
YIQ	69.8890, 13.4340, -1.1740

Conversions

Conversions Part 2

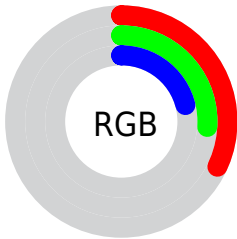
Format	Color
RYB	82, 80, 53
Decimal	5391157
CIELab	29.58, 4.06, 10.92
CIELCh	30, 11.649, 69.621
Yxy	6.0655, 0.3735, 0.3696
Android (android.graphics.Color)	4283581237 (0xFF524335)
YUV	69.8890, -8.3263, 10.6213
Hunter-Lab	24.6276, 1.3276, 7.0899

Details

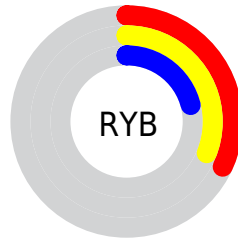
The HunterLab color **24.6276, 1.3276, 7.0899** is a dark color, and the websafe version is hex **333333**. A complement of this color would be **23.4524, -2.5426, -5.7741**, and the grayscale version is **24.7343, -1.3198, 1.3439**.

A 20% lighter version of the original color is **42.5289, 0.8992, 9.4137**, and **10.3156, 1.5602, 5.0633** is the 20% darker color. If you saturate the color by 10%, you get **23.4743, 2.3683, 8.2864**, and if you desaturate by 10%, it is **25.8271, 0.3907, 5.7211**.

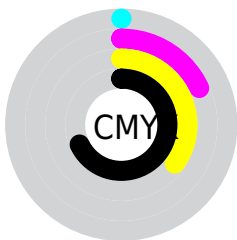
Distribution



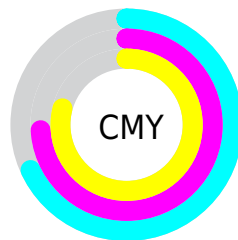
- Red (32%)
- Green (26%)
- Blue (21%)



- Red (32%)
- Yellow (31%)
- Blue (21%)



- Cyan (0%)
- Magenta (18%)
- Yellow (35%)
- Black (68%)



- Cyan (68%)
- Magenta (74%)
- Yellow (79%)

Brightness & Saturation Gradients

These gradients show how the HunterLab color 24.6276, 1.3276, 7.0899 changes by changing the brightness by 10 percent. The first figure shows a shift by +10% for each color and the second figure -10%.

Similar to the brightness gradients but the following saturation gradients show a change of the HunterLab color 24.6276, 1.3276, 7.0899 by changing the saturation by 10% instead.

■ 24.6276, 1.3276,
7.0899

■ 24.6276, 1.3276,
7.0899

■ 126.3549, -2.2536,
17.7837

■ 16.9851, 1.4406,
5.7999

■ 42.5051, 0.8792,
9.5209

■ 10.3535, 1.4582,
5.0084

■ 52.5894, 0.5658,
10.7024

0.0000, INF, NaN

0.0000, NaN, NaN

■ 63.3649, 0.2014,
11.8757

0.0000, NaN, NaN

■ 74.7900, -0.2094,
13.0472

0.0000, NaN, NaN

■ 86.8295, -0.6631,
14.2211

0.0000, NaN, NaN

0.0000, NaN, NaN

■ 99.4536, -1.1565,

112.6363, -1.6874,
16.5874

■ 24.6276, 1.3276,
7.0899

■ 24.6276, 1.3276,
7.0899

■ 23.4743, 2.3683,
8.2864

■ 25.8271, 0.3907,
5.7211

■ 22.3691, 3.5201,
9.2929

■ 27.0676, -0.4454,
4.1951

■ 21.3168, 4.7845,
10.0930

■ 28.3466, -1.1879,
2.5270

■ 20.3214, 6.1608,
10.6714

■ 29.6611, -1.8433,
0.7302

■ 19.3872, 7.6440,
11.0163

■ 31.0087, -2.4182,
-1.1832

■ 18.5118, 9.1910,
11.2182

■ 32.3870, -2.9187,
-3.2023

■ 18.1219, 9.9005,
11.3400

■ 33.7939, -3.3507,
-5.3177

■ 35.2275, -3.7199,
-7.5210

■ 36.6862, -4.0311,
-9.8048

Harmonies

Analogous

The Analogous color harmony consists of three colors that are next to each other on the color wheel.



24.6282, 4.6754, 5.4367



24.6276, 1.3276, 7.0899



24.6282, -2.5454, 7.3425

Triad

The Triadic color harmony groups three colors that are evenly spaced from another and form a triangle on the color wheel.



24.6282, 1.3267, 7.0902



24.6282, -8.2236, 0.1294



24.6282, 3.6060, -4.7513

Complementary

The Complementary color scheme is a pair of colors which are on the opposite of each other on the color wheel.



24.6276, 1.3276, 7.0899



23.4524, -2.5426, -5.7741

Split Complementary

Split-complementary colors differ from the complementary color scheme. The scheme consists of three colors, the original color and two neighbors of the complement color.



24.6282, -0.0608, -6.6990



24.6276, 1.3276, 7.0899



24.6282, -6.7832, -3.6080

Square

The Square scheme is like the rectangle color scheme, but the four colors are evenly spaced on the color wheel.



24.6282, 1.3267, 7.0902



24.6282, -7.9028, 3.6779



24.6282, -3.8506, -6.2511



24.6282, 6.0466, -1.2509

Rectangle

The Rectangle color scheme consists of four colors that form a rectangle on the color wheel.



24.6276, 1.3276, 7.0899



24.6282, -4.8825, 6.7291



24.6282, -3.8506, -6.2511



24.6282, 2.4670, -5.6321

Sweetspot

The Sweet Spot groups the original color and five complimentary colors.



24.6282, 1.3267, 7.0902



36.4318, -0.9928, 4.6885



21.8247, 9.3297, -1.4491



18.0297, -0.4595, 2.4005



67.9972, -3.6282, 3.6944



19.0543, -1.0167, 1.0353

Same Dimension

The Same Dimension uses a secret algorithm to generate beautiful new colors.



24.6282, 1.3267, 7.0902



31.2992, 2.8602, 10.6711



28.1793, -4.5469, 10.1974



14.2474, -0.4845, 1.5826



23.0184, 13.4899, 14.4200



53.6294, 36.2669, 33.6811

Inverse Universe

The Inverse Universe completely reimagines the original color for something new.



23.4524, -2.5426, -5.7741



29.4089, -3.3232, -10.0353



20.0035, 3.4439, -11.2740



14.0952, -0.9898, -0.0794



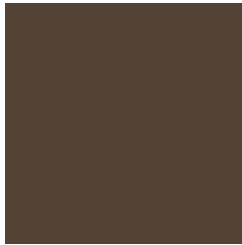
19.1197, 2.4764, -29.2437



43.8914, 9.7748, -75.9614

Previews

White Background



This preview shows how the HunterLab color 24.6276, 1.3276, 7.0899 looks on a white background.

Color Contrast Check

Large Text (above 18pt) WCAG AA ✓ Pass

Any Text WCAG AA ✓ Pass

Large Text (above 18pt) WCAG AAA ✓ Pass

Any Text WCAG AAA ✓ Pass

Black Background



This preview shows how the HunterLab color 24.6276, 1.3276, 7.0899 looks on a black background.

Color Contrast Check

Large Text (above 18pt) WCAG AA × Fail

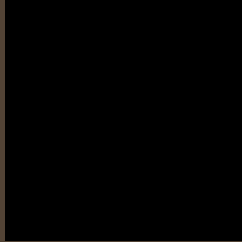
Any Text WCAG AA × Fail

Large Text (above 18pt) WCAG AAA × Fail

Any Text WCAG AAA × Fail

If you want to check with other color combinations, try the [Color Contrast Checker](#).

HunterLab 24.6276, 1.3276, 7.0899 Background



This preview shows how black text looks on a background with the HunterLab color 24.6276, 1.3276, 7.0899.

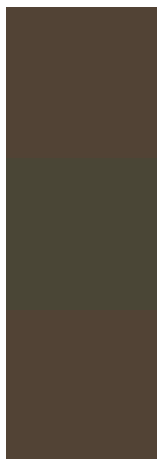


This preview shows how white text looks on a background with the HunterLab color 24.6276, 1.3276,

Color Blindness Simulation

Color vision deficiency is a very complex topic, and I could not describe the different causes any better than Wikipedia does, so if you want to learn more, you should check out their [article about color blindness](#).

Dichromacy



Original Color

24.6276, 1.3276, 7.0899

Protanopia

24.7032, -2.1879, 6.8073

Deuteranopia

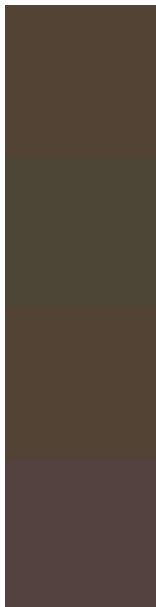
24.6276, 1.3276, 7.0899



Tritanopia

24.7136, 4.7966, 1.4112

Trichromacy



Original Color

24.6276, 1.3276, 7.0899

Protanomaly

24.6989, -0.9121, 6.8255

Deuteranomaly

24.6276, 1.3276, 7.0899

Tritanomaly

24.7095, 3.2871, 3.6448

Monochromacy



Original Color

24.6276, 1.3276, 7.0899

Achromatopsia

24.7479, -1.3205, 1.3446

Achromatomaly

24.6622, -0.6183, 3.5250

CSS Examples

Text

The CSS property to change the color of the text to HunterLab 24.6276, 1.3276, 7.0899 is called "color". The color property can be set on classes, ids or directly on the HTML element.

This example shows how text in the color `rgb(82, 67, 53)` looks like.

```
.text, #text, p{  
    color:rgb(82, 67, 53)  
}
```

If you want to add a text shadow in that color use the text-shadow property, you can generate a text shadow directly with our [CSS Text Shadow Generator](#).

Here you see how black text with a 4 pixel rgb(82, 67, 53) colored shadow looks like.

```
.shadow{ text-shadow: 4px 4px 2px rgb(82, 67, 53) }
```

Border

The CSS property to change the border of an element to HunterLab 24.6276, 1.3276, 7.0899 is called "border". The border property can be set on classes, ids or directly on the HTML element.

This example shows the color as border, it can be applied via the CSS property "border" or "border-color".

```
.border, #border, table{ border:4px solid rgb(82, 67, 53) }
```


If only the border color should be changed use the property `border-color`.

```
.border{ border-color:rgb(82, 67, 53) }
```

If you want to add a box shadow in that color use:

Here you see how a box with a 4 pixel `rgb(82, 67, 53)` colored shadow looks like.

```
.boxshadow{ -moz-box-shadow:4px 4px 4px  
4px rgb(82, 67, 53); -webkit-box-  
shadow:4px 4px 4px 4px rgb(82, 67, 53);  
box-shadow:4px 4px 4px 4px rgb(82, 67, 53)  
}
```

Background

The CSS property to change the background color of an element to HunterLab 24.6276, 1.3276, 7.0899 is called "background". The background property can be set on classes, ids or directly on the HTML element.

```
.background, #background, body{  
background: rgb(82, 67, 53) }
```

If only the background color should be changed can be used:

```
.background{ background-color: rgb(82, 67,  
53) }
```

This example shows the color as background, it is applied via the CSS property "background".

To optimize and compress your CSS code, you can use our [online CSS compressor and optimizer](#) based on csstidy. If you want to create a linear or radial gradient as background or border, check our [CSS Gradient Generator](#).

Hey! You found this booklet interesting? Support Converting Colors with the new Membership Option!

The pro membership hides all ads, plus gives you double the colors in the color bucket, and more awesome pro features!

[Learn more, Memberships starting at \\$2.50/m!](#)

**Follow me
on Twitter!**

@ConvertingColor