

Converting Colors

HunterLab(24.6732, 3.0727,
7.5379)

Have a look what the booklet for
HunterLab(24.6732, 3.0727, 7.5379)
contains.

HunterLab(24.7443, 2.9076, 7.5137)	3
<i>Conversions</i>	4
<i>Details</i>	6
<i>Harmonies</i>	12
<i>Previews</i>	24
<i>Color Blindness Simulation</i>	28
<i>CSS Examples</i>	31

Color

**HunterLab(24.7443, 2.9076,
7.5137)**

Conversions

Conversions Part 1

Format	Color
Hex	564234
RGB	86, 66, 52
RGB Percent	34%, 26%, 20%
CMY	0.6627, 0.7412, 0.7961
CMYK	0.00, 0.23, 0.40, 0.66
HSL	25°, 25%, 27%
HSV	25°, 40%, 34%
XYZ	6.4058, 6.1228, 4.0930
YIQ	70.3840, 16.4140, -0.1140

Conversions

Conversions Part 2

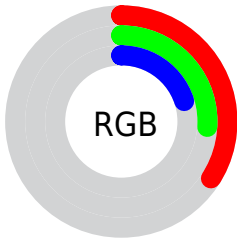
Format	Color
RYB	86, 76, 52
Decimal	5653044
CIELab	29.72, 6.41, 11.83
CIELCh	30, 13.454, 61.568
Yxy	6.1231, 0.3854, 0.3684
Android (android.graphics.Color)	4283843124 (0xFF564234)
YUV	70.3840, -9.0633, 13.6952
Hunter-Lab	24.7443, 2.9076, 7.5137

Details

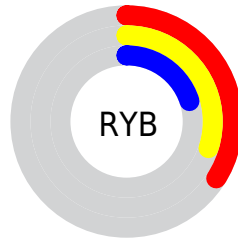
The HunterLab color **24.7443, 2.9076, 7.5137** is a dark color, and the websafe version is hex **333333**. A complement of this color would be **24.5693, -3.6685, -6.1706**, and the grayscale version is **24.9112, -1.3292, 1.3535**.

A 20% lighter version of the original color is **42.7245, 2.8830, 9.9959**, and **10.3887, 2.7789, 5.3029** is the 20% darker color. If you saturate the color by 10%, you get **23.4251, 4.3222, 8.6273**, and if you desaturate by 10%, it is **26.1252, 1.6056, 6.2345**.

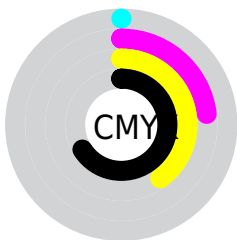
Distribution



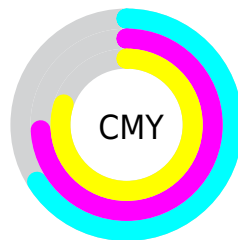
- Red (34%)
- Green (26%)
- Blue (20%)



- Red (34%)
- Yellow (30%)
- Blue (20%)



- Cyan (0%)
- Magenta (23%)
- Yellow (40%)
- Black (66%)



- Cyan (66%)
- Magenta (74%)
- Yellow (80%)

Brightness & Saturation Gradients

These gradients show how the HunterLab color 24.7443, 2.9076, 7.5137 changes by changing the brightness by 10 percent. The first figure shows a shift by +10% for each color and the second figure -10%.

Similar to the brightness gradients but the following saturation gradients show a change of the HunterLab color 24.7443, 2.9076, 7.5137 by changing the saturation by 10% instead.

■ 24.7443, 2.9076,
7.5137

■ 24.7443, 2.9076,
7.5137

■ 126.5561, 0.3713,
18.6651

■ 17.0882, 2.8584,
6.1446

■ 42.6450, 2.7423,
10.0757

■ 10.4410, 2.6937,
5.3518

■ 52.7396, 2.5555,
11.3136

0.0000, INF, NaN

0.0000, NaN, NaN

■ 63.5248, 2.3102,
12.5390

0.0000, NaN, NaN

■ 74.9589, 2.0122,
13.7591

0.0000, NaN, NaN

■ 87.0070, 1.6659,
14.9788

0.0000, NaN, NaN

0.0000, NaN, NaN

■ 99.6393, 1.2750,

112.8299, 0.8426,
17.4295

■ 24.7443, 2.9076,
7.5137

■ 24.7443, 2.9076,
7.5137

■ 23.4251, 4.3222,
8.6273

■ 26.1252, 1.6056,
6.2345

■ 22.1718, 5.8555,
9.5539

■ 27.5607, 0.4136,
4.8076

■ 20.9917, 7.5055,
10.2728

■ 29.0464, -0.6764,
3.2502

■ 19.8917, 9.2650,
10.7643

■ 30.5779, -1.6721,
1.5771

■ 18.8788, 11.1174,
11.0160

■ 32.1516, -2.5811,
-0.1987

■ 17.9447, 12.9649,
11.2464

■ 33.7639, -3.4108,
-2.0663

■ 17.9030, 13.0493,
11.2602

■ 35.4120, -4.1684,
-4.0161

■ 37.0932, -4.8604,
-6.0400

■ 38.8052, -5.4927,
-8.1310

Harmonies

Analogous

The Analogous color harmony consists of three colors that are next to each other on the color wheel.



24.7449, 6.4386, 5.2576



24.7443, 2.9076, 7.5137



24.7449, -1.5564, 8.2075

Triad

The Triadic color harmony groups three colors that are evenly spaced from another and form a triangle on the color wheel.



24.7449, 2.9066, 7.5140



24.7449, -9.3434, 1.1221



24.7449, 3.3423, -6.6844

Complementary

The Complementary color scheme is a pair of colors which are on the opposite of each other on the color wheel.



24.7443, 2.9076, 7.5137



24.5693, -3.6685, -6.1706

Split Complementary

Split-complementary colors differ from the complementary color scheme. The scheme consists of three colors, the original color and two neighbors of the complement color.



24.7449, -1.0860, -8.3034



24.7443, 2.9076, 7.5137



24.7449, -8.2296, -3.3289

Square

The Square scheme is like the rectangle color scheme, but the four colors are evenly spaced on the color wheel.



24.7449, 2.9066, 7.5140



24.7449, -8.4379, 4.9333



24.7449, -5.2838, -6.9792



24.7449, 6.7024, -2.8724

Rectangle

The Rectangle color scheme consists of four colors that form a rectangle on the color wheel.



24.7443, 2.9076, 7.5137



24.7449, -4.4037, 7.8100



24.7449, -5.2838, -6.9792



24.7449, 1.9190, -7.5308

Sweetspot

The Sweet Spot groups the original color and five complimentary colors.



24.7449, 2.9066, 7.5140



37.8298, -0.4936, 4.9046



22.1531, 11.5804, -2.7390



18.6251, -0.2004, 2.4866



69.0652, -3.6851, 3.7524



19.9203, -1.0629, 1.0823

Same Dimension

The Same Dimension uses a secret algorithm to generate beautiful new colors.



24.7449, 2.9066, 7.5140



31.1297, 5.5310, 11.2769



28.8996, -4.1244, 11.0702



14.9662, -0.3870, 1.6060



22.2290, 17.1496, 13.9976



51.0610, 44.7709, 32.2474

Inverse Universe

The Inverse Universe completely reimagines the original color for something new.



24.5693, -3.6685, -6.1706



30.8423, -4.9875, -10.6631



20.4269, 3.4122, -12.9077



14.9461, -1.1665, -0.0113



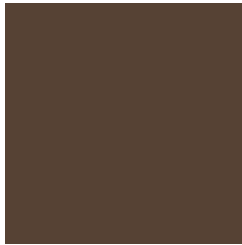
21.4895, -0.7571, -25.2255



49.1407, 1.2697, -64.1626

Previews

White Background



This preview shows how the HunterLab color 24.7443, 2.9076, 7.5137 looks on a white background.

Color Contrast Check

Large Text (above 18pt) WCAG AA ✓ Pass

Any Text WCAG AA ✓ Pass

Large Text (above 18pt) WCAG AAA ✓ Pass

Any Text WCAG AAA ✓ Pass

Black Background



Color Contrast Check

Large Text (above 18pt) WCAG AA × Fail

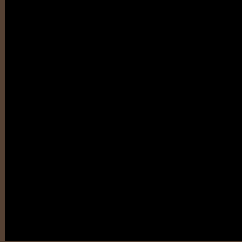
Any Text WCAG AA × Fail

Large Text (above 18pt) WCAG AAA × Fail

Any Text WCAG AAA × Fail

If you want to check with other color combinations, try the [Color Contrast Checker](#).

HunterLab 24.7443, 2.9076, 7.5137 Background



This preview shows how black text looks on a background with the HunterLab color 24.7443, 2.9076, 7.5137.



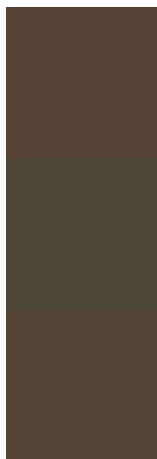
This preview shows how white text looks on a background with the HunterLab color 24.7443, 2.9076,

7.5137.

Color Blindness Simulation

Color vision deficiency is a very complex topic, and I could not describe the different causes any better than Wikipedia does, so if you want to learn more, you should check out their [article about color blindness](#).

Dichromacy



Original Color

24.7443, 2.9076, 7.5137

Protanopia

24.7841, -1.9043, 6.8895

Deuteranopia

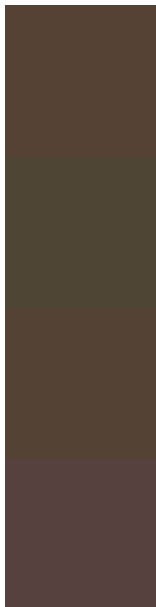
24.7007, 1.5368, 7.4491



Tritanopia

24.8418, 6.3369, 1.9807

Trichromacy



Original Color

24.7443, 2.9076, 7.5137

Protanomaly

24.8507, -0.4258, 7.2695

Deuteranomaly

24.7933, 1.8475, 7.5407

Tritanomaly

24.8309, 4.8391, 4.1567

Monochromacy



Original Color

24.7443, 2.9076, 7.5137

Achromatopsia

24.7479, -1.3205, 1.3446

Achromatomaly

24.8025, -0.1813, 4.0384

CSS Examples

Text

The CSS property to change the color of the text to HunterLab 24.7443, 2.9076, 7.5137 is called "color". The color property can be set on classes, ids or directly on the HTML element.

This example shows how text in the color `rgb(86, 66, 52)` looks like.

```
.text, #text, p{  
    color:rgb(86, 66, 52)  
}
```

If you want to add a text shadow in that color use the text-shadow property, you can generate a text shadow directly with our [CSS Text Shadow Generator](#).

Here you see how black text with a 4 pixel rgb(86, 66, 52) colored shadow looks like.

```
.shadow{ text-shadow: 4px 4px 2px rgb(86, 66, 52) }
```

Border

The CSS property to change the border of an element to HunterLab 24.7443, 2.9076, 7.5137 is called "border". The border property can be set on classes, ids or directly on the HTML element.

This example shows the color as border, it can be applied via the CSS property "border" or "border-color".

```
.border, #border, table{ border:4px solid rgb(86, 66, 52) }
```


If only the border color should be changed use the property `border-color`.

```
.border{ border-color:rgb(86, 66, 52) }
```

If you want to add a box shadow in that color use:

Here you see how a box with a 4 pixel `rgb(86, 66, 52)` colored shadow looks like.

```
.boxshadow{ -moz-box-shadow:4px 4px 4px  
4px rgb(86, 66, 52); -webkit-box-  
shadow:4px 4px 4px 4px rgb(86, 66, 52);  
box-shadow:4px 4px 4px 4px rgb(86, 66, 52)  
}
```

Background

The CSS property to change the background color of an element to HunterLab 24.7443, 2.9076, 7.5137 is called "background". The background property can be set on classes, ids or directly on the HTML element.

```
.background, #background, body{  
background: rgb(86, 66, 52) }
```

If only the background color should be changed can be used:

```
.background{ background-color: rgb(86, 66,  
52) }
```

This example shows the color as background, it is applied via the CSS property "background".

To optimize and compress your CSS code, you can use our [online CSS compressor and optimizer](#) based on csstidy. If you want to create a linear or radial gradient as background or border, check our [CSS Gradient Generator](#).

Hey! You found this booklet interesting? Support Converting Colors with the new Membership Option!

The pro membership hides all ads, plus gives you double the colors in the color bucket, and more awesome pro features!

[Learn more, Memberships starting at \\$2.50/m!](#)

**Follow me
on Twitter!**

@ConvertingColor