

Converting Colors

HunterLab(24.8172, 0.7021,
4.5961)

Have a look what the booklet for
HunterLab(24.8172, 0.7021, 4.5961)
contains.

HunterLab(24.7658, 0.8700, 4.7064)	3
<i>Conversions</i>	4
<i>Details</i>	6
<i>Harmonies</i>	12
<i>Previews</i>	24
<i>Color Blindness Simulation</i>	28
<i>CSS Examples</i>	31

Color

**HunterLab(24.7658, 0.8700,
4.7064)**

Conversions

Conversions Part 1

Format	Color
Hex	4F443D
RGB	79, 68, 61
RGB Percent	31%, 27%, 24%
CMY	0.6902, 0.7333, 0.7608
CMYK	0.00, 0.14, 0.23, 0.69
HSL	23°, 13%, 27%
HSV	23°, 23%, 31%
XYZ	6.1339, 6.1334, 5.2755
YIQ	70.4910, 8.8030, 0.1550

Conversions

Conversions Part 2

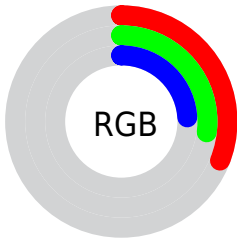
Format	Color
RYB	79, 72, 61
Decimal	5194813
CIELab	29.75, 3.37, 5.96
CIELCh	30, 6.849, 60.517
Yxy	6.1337, 0.3497, 0.3496
Android (android.graphics.Color)	4283384893 (0xFF4F443D)
YUV	70.4910, -4.6791, 7.4624
Hunter-Lab	24.7658, 0.8700, 4.7064

Details

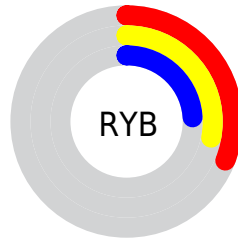
The HunterLab color **24.7658, 0.8700, 4.7064** is a dark color, and the websafe version is hex **333333**. A complement of this color would be **24.8821, -2.9895, -2.3463**, and the grayscale version is **24.9359, -1.3305, 1.3548**.

A 20% lighter version of the original color is **42.6177, 0.1998, 6.5268**, and **10.4037, 1.0933, 2.9187** is the 20% darker color. If you saturate the color by 10%, you get **23.4408, 2.0535, 5.9300**, and if you desaturate by 10%, it is **26.1408, -0.2219, 3.3706**.

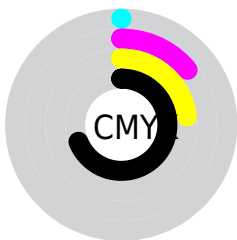
Distribution



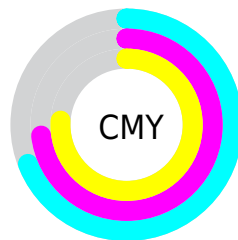
- Red (31%)
- Green (27%)
- Blue (24%)



- Red (31%)
- Yellow (28%)
- Blue (24%)



- Cyan (0%)
- Magenta (14%)
- Yellow (23%)
- Black (69%)



- Cyan (69%)
- Magenta (73%)
- Yellow (76%)

Brightness & Saturation Gradients

These gradients show how the HunterLab color 24.7658, 0.8700, 4.7064 changes by changing the brightness by 10 percent. The first figure shows a shift by +10% for each color and the second figure -10%.

Similar to the brightness gradients but the following saturation gradients show a change of the HunterLab color 24.7658, 0.8700, 4.7064 by changing the saturation by 10% instead.

■ 24.7658, 0.8700,
4.7064

■ 24.7658, 0.8700,
4.7064

■ 126.5931, -3.0279,
12.9789

■ 17.1072, 1.0332,
3.8363

■ 42.6708, 0.3352,
6.4448

■ 10.4571, 1.1077,
3.0217

■ 52.7672, -0.0167,
7.3281

0.0000, INF, NaN

0.0000, NaN, NaN

■ 63.5542, -0.4172,
8.2260

0.0000, NaN, NaN

■ 74.9900, -0.8622,
9.1403

0.0000, NaN, NaN

■ 87.0397, -1.3482,
10.0722

0.0000, NaN, NaN

0.0000, NaN, NaN

■ 99.6735, -1.8727,

11.0223

0.0000, NaN, NaN

112.8655, -2.4332,
11.9912

■ 24.7658, 0.8700,
4.7064

■ 24.7658, 0.8700,
4.7064

■ 23.4408, 2.0535,
5.9300

■ 26.1408, -0.2219,
3.3706

■ 22.1690, 3.3367,
7.0248

■ 27.5597, -1.2267,
1.9350

■ 20.9564, 4.7232,
7.9738

■ 29.0192, -2.1520,
0.4116

■ 19.8093, 6.2142,
8.7579

■ 30.5161, -3.0049,
-1.1898

■ 18.7344, 7.8063,
9.3576

■ 32.0472, -3.7917,
-2.8606

■ 17.7386, 9.4893,
9.7549

■ 33.6101, -4.5187,
-4.5938

■ 16.8257, 11.2274,
9.9876

■ 35.2024, -5.1913,
-6.3832

■ 16.2117, 12.4504,
10.2075

■ 36.8221, -5.8147,
-8.2237

■ 38.4674, -6.3934,
-10.1108

Harmonies

Analogous

The Analogous color harmony consists of three colors that are next to each other on the color wheel.



24.7664, 2.5632, 3.3713



24.7658, 0.8700, 4.7064



24.7664, -1.3623, 5.1620

Triad

The Triadic color harmony groups three colors that are evenly spaced from another and form a triangle on the color wheel.



24.7664, 0.8692, 4.7068



24.7664, -5.5509, 1.3105



24.7664, 0.9401, -2.5153

Complementary

The Complementary color scheme is a pair of colors which are on the opposite of each other on the color wheel.



24.7658, 0.8700, 4.7064



24.8821, -2.9895, -2.3463

Split Complementary

Split-complementary colors differ from the complementary color scheme. The scheme consists of three colors, the original color and two neighbors of the complement color.



24.7664, -1.2832, -3.1891



24.7658, 0.8700, 4.7064



24.7664, -4.9831, -0.8616

Square

The Square scheme is like the rectangle color scheme, but the four colors are evenly spaced on the color wheel.



24.7664, 0.8692, 4.7068



24.7664, -5.0203, 3.3117



24.7664, -3.4411, -2.5588



24.7664, 2.6052, -0.7907

Rectangle

The Rectangle color scheme consists of four colors that form a rectangle on the color wheel.



24.7658, 0.8700, 4.7064



24.7664, -2.8389, 4.9404



24.7664, -3.4411, -2.5588



24.7664, 0.2306, -2.8788

Sweetspot

The Sweet Spot groups the original color and five complimentary colors.



24.7664, 0.8692, 4.7068



35.0943, -1.0280, 3.3725



23.3860, 5.3768, -1.0827



17.5043, -0.5039, 1.6967



66.9319, -3.5713, 3.6365



18.1947, -0.9708, 0.9886

Same Dimension

The Same Dimension uses a secret algorithm to generate beautiful new colors.



24.7664, 0.8692, 4.7068



31.3841, 1.9149, 6.9791



27.0056, -2.8839, 6.8973



13.3839, -0.3259, 1.3939



20.7861, 17.1019, 13.1077



48.9187, 46.0007, 30.9488

Inverse Universe

The Inverse Universe completely reimagines the original color for something new.



24.8821, -2.9895, -2.3463



31.5672, -4.2180, -4.2321



22.6337, 0.7612, -5.4172



13.4063, -1.0675, 0.0387



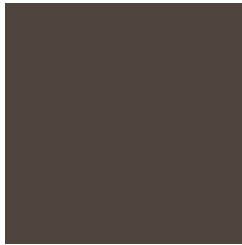
21.0710, -1.8151, -22.4187



49.5057, -1.4540, -58.7389

Previews

White Background



This preview shows how the HunterLab color 24.7658, 0.8700, 4.7064 looks on a white background.

Color Contrast Check

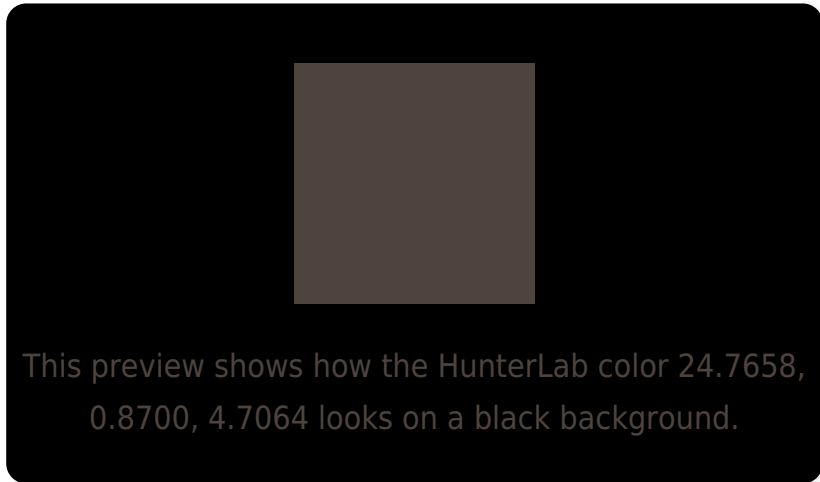
Large Text (above 18pt) WCAG AA ✓ Pass

Any Text WCAG AA ✓ Pass

Large Text (above 18pt) WCAG AAA ✓ Pass

Any Text WCAG AAA ✓ Pass

Black Background



Color Contrast Check

Large Text (above 18pt) WCAG AA × Fail

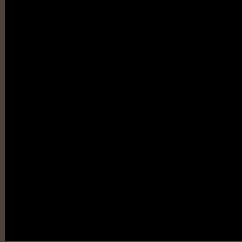
Any Text WCAG AA × Fail

Large Text (above 18pt) WCAG AAA × Fail

Any Text WCAG AAA × Fail

If you want to check with other color combinations, try the [Color Contrast Checker](#).

HunterLab 24.7658, 0.8700, 4.7064 Background



This preview shows how black text looks on a background with the HunterLab color 24.7658, 0.8700, 4.7064.



This preview shows how white text looks on a background with the HunterLab color 24.7658, 0.8700,

4.7064.

Color Blindness Simulation

Color vision deficiency is a very complex topic, and I could not describe the different causes any better than Wikipedia does, so if you want to learn more, you should check out their [article about color blindness](#).

Dichromacy



Original Color

24.7658, 0.8700, 4.7064

Protanopia

24.7883, -1.5611, 4.3464

Deuteranopia

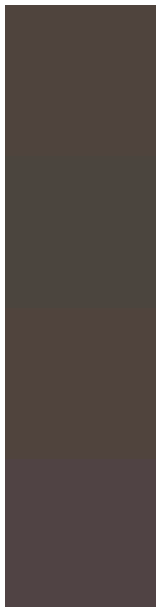
24.8528, 1.1647, 4.8023



Tritanopia

24.6369, 3.4445, 0.4872

Trichromacy



Original Color

24.7658, 0.8700, 4.7064

Protanomaly

24.6980, -0.5856, 4.2680

Deuteranomaly

24.8528, 1.1647, 4.8023

Tritanomaly

24.7732, 2.4643, 2.2197

Monochromacy



Original Color

24.7658, 0.8700, 4.7064

Achromatopsia

24.7479, -1.3205, 1.3446

Achromatomaly

24.6535, -0.5060, 2.4119

CSS Examples

Text

The CSS property to change the color of the text to HunterLab 24.7658, 0.8700, 4.7064 is called "color". The color property can be set on classes, ids or directly on the HTML element.

This example shows how text in the color `rgb(79, 68, 61)` looks like.

```
.text, #text, p{  
    color:rgb(79, 68, 61)  
}
```

If you want to add a text shadow in that color use the text-shadow property, you can generate a text shadow directly with our [CSS Text Shadow Generator](#).

Here you see how black text with a 4 pixel rgb(79, 68, 61) colored shadow looks like.

```
.shadow{ text-shadow: 4px 4px 2px rgb(79, 68, 61) }
```

Border

The CSS property to change the border of an element to HunterLab 24.7658, 0.8700, 4.7064 is called "border". The border property can be set on classes, ids or directly on the HTML element.

This example shows the color as border, it can be applied via the CSS property "border" or "border-color".

```
.border, #border, table{ border:4px solid rgb(79, 68, 61) }
```


If only the border color should be changed use the property `border-color`.

```
.border{ border-color:rgb(79, 68, 61) }
```

If you want to add a box shadow in that color use:

Here you see how a box with a 4 pixel `rgb(79, 68, 61)` colored shadow looks like.

```
.boxshadow{ -moz-box-shadow:4px 4px 4px  
4px rgb(79, 68, 61); -webkit-box-  
shadow:4px 4px 4px 4px rgb(79, 68, 61);  
box-shadow:4px 4px 4px 4px rgb(79, 68, 61)  
}
```

Background

The CSS property to change the background color of an element to HunterLab 24.7658, 0.8700, 4.7064 is called "background". The background property can be set on classes, ids or directly on the HTML element.

```
.background, #background, body{  
background: rgb(79, 68, 61) }
```

If only the background color should be changed can be used:

```
.background{ background-color: rgb(79, 68,  
61) }
```

This example shows the color as background, it is applied via the CSS property "background".

To optimize and compress your CSS code, you can use our [online CSS compressor and optimizer](#) based on csstidy. If you want to create a linear or radial gradient as background or border, check our [CSS Gradient Generator](#).

Hey! You found this booklet interesting? Support Converting Colors with the new Membership Option!

The pro membership hides all ads, plus gives you double the colors in the color bucket, and more awesome pro features!

[Learn more, Memberships starting at \\$2.50/m!](#)

**Follow me
on Twitter!**

@ConvertingColor