

Converting Colors

HunterLab(24.9022, 7.1633,
1.6751)

Have a look what the booklet for
HunterLab(24.9022, 7.1633, 1.6751)
contains.

HunterLab(24.8412, 7.5419, 1.6094)	3
<i>Conversions</i>	4
<i>Details</i>	6
<i>Harmonies</i>	12
<i>Previews</i>	24
<i>Color Blindness Simulation</i>	28
<i>CSS Examples</i>	31

Color

**HunterLab(24.8412, 7.5419,
1.6094)**

Conversions

Conversions Part 1

Format	Color
Hex	5A3F46
RGB	90, 63, 70
RGB Percent	35%, 25%, 27%
CMY	0.6471, 0.7529, 0.7255
CMYK	0.00, 0.30, 0.22, 0.65
HSL	344°, 18%, 30%
HSV	344°, 30%, 35%
XYZ	7.0994, 6.1709, 6.6112
YIQ	71.8710, 13.8450, 7.9010

Conversions

Conversions Part 2

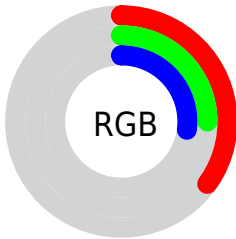
Format	Color
R_{YB}	90, 63, 70
Decimal	5914438
CIE _{Lab}	29.84, 12.99, 0.43
CIE _{LCh}	30, 12.993, 1.877
Yxy	6.1711, 0.3571, 0.3104
Android (android.graphics.Color)	4284104518 (0xFF5A3F46)
YUV	71.8710, -0.9224, 15.8991
Hunter-Lab	24.8412, 7.5419, 1.6094

Details

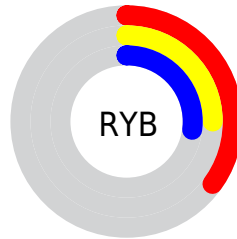
The HunterLab color **24.8412, 7.5419, 1.6094** is a dark color, and the websafe version is hex **663333**. A complement of this color would be **29.9896, -9.2244, 2.1380**, and the grayscale version is **25.4108, -1.3559, 1.3806**.

A 20% lighter version of the original color is **42.8248, 8.1652, 2.8020**, and **10.4548, 6.3623, 0.6732** is the 20% darker color. If you saturate the color by 10%, you get **22.7483, 10.7416, 1.8211**, and if you desaturate by 10%, it is **27.0921, 4.3874, 1.5397**.

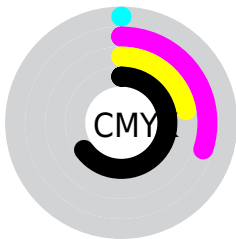
Distribution



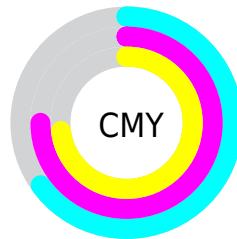
- Red (35%)
- Green (25%)
- Blue (27%)



- Red (35%)
- Yellow (25%)
- Blue (27%)



- Cyan (0%)
- Magenta (30%)
- Yellow (22%)
- Black (65%)



- Cyan (65%)
- Magenta (75%)
- Yellow (73%)

Brightness & Saturation Gradients

These gradients show how the HunterLab color 24.8412, 7.5419, 1.6094 changes by changing the brightness by 10 percent. The first figure shows a shift by +10% for each color and the second figure -10%.

Similar to the brightness gradients but the following saturation gradients show a change of the HunterLab color 24.8412, 7.5419, 1.6094 by changing the saturation by 10% instead.

■ 24.8412, 7.5419,
1.6094

■ 24.8412, 7.5419,
1.6094

■ 126.7230, 7.8558,
7.3430

■ 17.1739, 7.0653,
1.1623

■ 42.7612, 8.1375,
2.6369

■ 10.5137, 6.4330,
0.7649

■ 52.8643, 8.2950,
3.2097

0.0000, INF, NaN

0.0000, NaN, NaN

■ 63.6574, 8.3750,
3.8185

0.0000, NaN, NaN

■ 75.0991, 8.3859,
4.4615

0.0000, NaN, NaN

■ 87.1543, 8.3344,
5.1368

0.0000, NaN, NaN

0.0000, NaN, NaN

■ 99.7934, 8.2261,

112.9905, 8.0653,
6.5788

■ 24.8412, 7.5419,
1.6094

■ 24.8412, 7.5419,
1.6094

■ 22.7483, 10.7416,
1.8211

■ 27.0921, 4.3874,
1.5397

■ 20.8391, 13.9415,
2.1958

■ 29.4764, 1.3028,
1.5886

■ 19.1464, 17.0531,
2.7523

■ 31.9759, -1.7068,
1.7373

■ 17.7045, 19.9382,
3.4974

■ 34.5756, -4.6438,
1.9694

■ 16.5464, 22.4102,
4.4150

■ 37.2630, -7.5145,
2.2715

■ 15.6934, 24.2722,
5.4552

■ 40.0283, -10.3270,
2.6326

■ 14.9563, 26.0349,
6.3891

■ 42.8633, -13.0895,
3.0440

■ 14.9561, 26.0353,
6.3893

■ 45.7612, -15.8099,
3.4984

■ 48.7163, -18.4953,
3.9900

Harmonies

Analogous

The Analogous color harmony consists of three colors that are next to each other on the color wheel.



24.8418, 6.4392, -2.6722



24.8412, 7.5419, 1.6094



24.8418, 6.1350, 5.1768

Triad

The Triadic color harmony groups three colors that are evenly spaced from another and form a triangle on the color wheel.



24.8418, 7.5410, 1.6099



24.8418, -5.5668, 7.1745



24.8418, -5.1256, -6.6832

Complementary

The Complementary color scheme is a pair of colors which are on the opposite of each other on the color wheel.



24.8412, 7.5419, 1.6094



29.9896, -9.2244, 2.1380

Split Complementary

Split-complementary colors differ from the complementary color scheme. The scheme consists of three colors, the original color and two neighbors of the complement color.



24.8418, -8.0002, -3.1976



24.8412, 7.5419, 1.6094



24.8418, -8.2424, 4.7988

Square

The Square scheme is like the rectangle color scheme, but the four colors are evenly spaced on the color wheel.



24.8418, 7.5410, 1.6099



24.8418, -1.5986, 8.0293



24.8418, -9.1024, 1.0918



24.8418, -1.0539, -7.9225

Rectangle

The Rectangle color scheme consists of four colors that form a rectangle on the color wheel.



24.8412, 7.5419, 1.6094



24.8418, 4.0171, 6.8042



24.8418, -9.1024, 1.0918



24.8418, -6.2540, -5.7091

Sweetspot

The Sweet Spot groups the original color and five complimentary colors.



24.8418, 7.5410, 1.6099



39.2162, 1.4388, 2.1110



24.7455, 8.4361, -7.7804



19.1259, 0.8993, 1.0313



70.1359, -3.7423, 3.8106



20.7927, -1.1094, 1.1297

Same Dimension

The Same Dimension uses a secret algorithm to generate beautiful new colors.



24.8418, 7.5410, 1.6099



30.8493, 13.0054, 2.3089



26.1267, 3.8825, 5.4946



15.3515, 0.4924, 0.8259



18.3806, 31.9445, 8.2555



42.8630, 74.2021, 21.5118

Inverse Universe

The Inverse Universe completely reimagines the original color for something new.



24.8418, 7.5410, 1.6099



30.8493, 13.0054, 2.3089



28.4417, -5.5733, -2.7362



15.3515, 0.4924, 0.8259



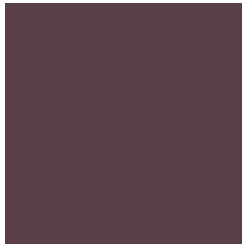
18.3806, 31.9445, 8.2555



42.8630, 74.2021, 21.5118

Previews

White Background



This preview shows how the HunterLab color 24.8412, 7.5419, 1.6094 looks on a white background.

Color Contrast Check

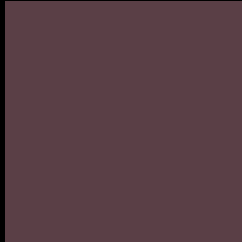
Large Text (above 18pt) WCAG AA ✓ Pass

Any Text WCAG AA ✓ Pass

Large Text (above 18pt) WCAG AAA ✓ Pass

Any Text WCAG AAA ✓ Pass

Black Background



This preview shows how the HunterLab color 24.8412, 7.5419, 1.6094 looks on a black background.

Color Contrast Check

Large Text (above 18pt) WCAG AA × Fail

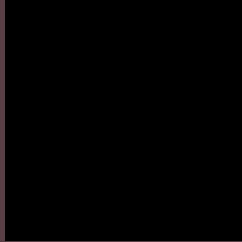
Any Text WCAG AA × Fail

Large Text (above 18pt) WCAG AAA × Fail

Any Text WCAG AAA × Fail

If you want to check with other color combinations, try the [Color Contrast Checker](#).

HunterLab 24.8412, 7.5419, 1.6094 Background



This preview shows how black text looks on a background with the HunterLab color 24.8412, 7.5419, 1.6094.



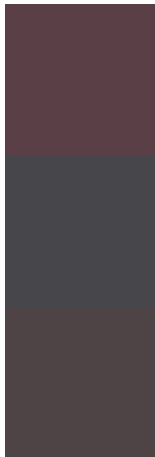
This preview shows how white text looks on a background with the HunterLab color 24.8412, 7.5419,

1.6094.

Color Blindness Simulation

Color vision deficiency is a very complex topic, and I could not describe the different causes any better than Wikipedia does, so if you want to learn more, you should check out their [article about color blindness](#).

Dichromacy



Original Color

24.8412, 7.5419, 1.6094

Protanopia

24.9285, -0.4851, -0.0562

Deuteranopia

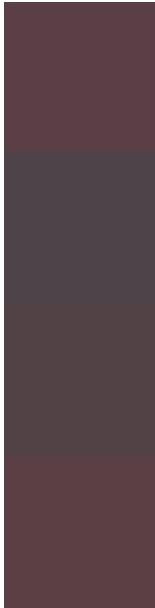
24.8669, 1.5851, 1.9265



Tritanopia

24.7912, 7.2853, 2.3246

Trichromacy



Original Color

24.8412, 7.5419, 1.6094

Protanomaly

24.7286, 2.5733, 0.1697

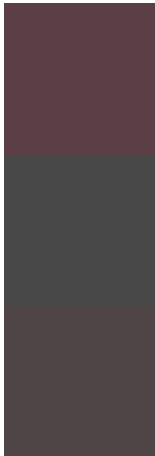
Deuteranomaly

24.7385, 3.6231, 1.8134

Tritanomaly

24.8160, 7.4126, 1.9696

Monochromacy



Original Color

24.8412, 7.5419, 1.6094

Achromatopsia

25.4565, -1.3583, 1.3831

Achromatomaly

25.2457, 1.7070, 1.5861

CSS Examples

Text

The CSS property to change the color of the text to HunterLab 24.8412, 7.5419, 1.6094 is called "color". The color property can be set on classes, ids or directly on the HTML element.

This example shows how text in the color `rgb(90, 63, 70)` looks like.

```
.text, #text, p{  
    color:rgb(90, 63, 70)  
}
```

If you want to add a text shadow in that color use the text-shadow property, you can generate a text shadow directly with our [CSS Text Shadow Generator](#).

Here you see how black text with a 4 pixel rgb(90, 63, 70) colored shadow looks like.

```
.shadow{ text-shadow: 4px 4px 2px rgb(90, 63, 70) }
```

Border

The CSS property to change the border of an element to HunterLab 24.8412, 7.5419, 1.6094 is called "border".

The border property can be set on classes, ids or directly on the HTML element.

This example shows the color as border, it can be applied via the CSS property "border" or "border-color".

```
.border, #border, table{ border:4px solid rgb(90, 63, 70) }
```


If only the border color should be changed use the property border-color.

```
.border{ border-color:rgb(90, 63, 70) }
```

If you want to add a box shadow in that color use:

Here you see how a box with a 4 pixel rgb(90, 63, 70) colored shadow looks like.

```
.boxshadow{ -moz-box-shadow:4px 4px 4px  
4px rgb(90, 63, 70); -webkit-box-  
shadow:4px 4px 4px 4px rgb(90, 63, 70);  
box-shadow:4px 4px 4px 4px rgb(90, 63, 70)  
}
```

Background

The CSS property to change the background color of an element to HunterLab 24.8412, 7.5419, 1.6094 is called "background". The background property can be set on classes, ids or directly on the HTML element.

```
.background, #background, body{  
background: rgb(90, 63, 70) }
```

If only the background color should be changed can be used:

```
.background{ background-color: rgb(90, 63,  
70) }
```

This example shows the color as background, it is applied via the CSS property "background".

To optimize and compress your CSS code, you can use our [online CSS compressor and optimizer](#) based on csstidy. If you want to create a linear or radial gradient as background or border, check our [CSS Gradient Generator](#).

Hey! You found this booklet interesting? Support Converting Colors with the new Membership Option!

The pro membership hides all ads, plus gives you double the colors in the color bucket, and more awesome pro features!

[Learn more, Memberships starting at \\$2.50/m!](#)

**Follow me
on Twitter!**

@ConvertingColor