

Converting Colors

HunterLab(24.9776, 6.4715,
2.0794)

Have a look what the booklet for
HunterLab(24.9776, 6.4715, 2.0794)
contains.

HunterLab(24.9405, 6.6493, 2.1002)	3
<i>Conversions</i>	4
<i>Details</i>	6
<i>Harmonies</i>	12
<i>Previews</i>	24
<i>Color Blindness Simulation</i>	28
<i>CSS Examples</i>	31

Color

**HunterLab(24.9405, 6.6493,
2.1002)**

Conversions

Conversions Part 1

Format	Color
Hex	594045
RGB	89, 64, 69
RGB Percent	35%, 25%, 27%
CMY	0.6510, 0.7490, 0.7294
CMYK	0.00, 0.28, 0.22, 0.65
HSL	348°, 16%, 30%
HSV	348°, 28%, 35%
XYZ	7.0274, 6.2203, 6.4604
YIQ	72.0450, 13.2950, 6.8550

Conversions

Conversions Part 2

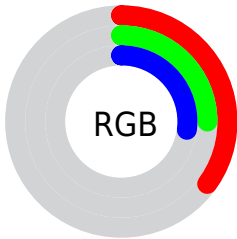
Format	Color
RYB	89, 64, 69
Decimal	5849157
CIELab	29.96, 11.74, 1.24
CIELCh	30, 11.810, 6.019
Yxy	6.2206, 0.3566, 0.3156
Android (android.graphics.Color)	4284039237 (0xFF594045)
YUV	72.0450, -1.5012, 14.8695
Hunter-Lab	24.9405, 6.6493, 2.1002

Details

The HunterLab color **24.9405, 6.6493, 2.1002** is a dark color, and the websafe version is hex **663333**. A complement of this color would be **29.7909, -8.4709, 1.5150**, and the grayscale version is **25.4747, -1.3593, 1.3841**.

A 20% lighter version of the original color is **42.9513, 7.2057, 3.3609**, and **10.6043, 5.8650, 1.1728** is the 20% darker color. If you saturate the color by 10%, you get **22.8308, 9.7485, 2.4484**, and if you desaturate by 10%, it is **27.2022, 3.6103, 1.8740**.

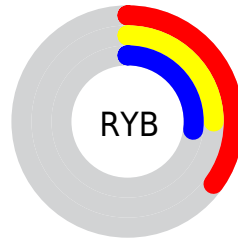
Distribution



Red (35%)

Green (25%)

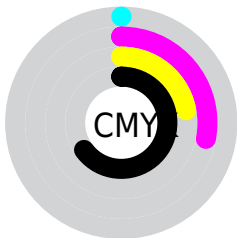
Blue (27%)



Red (35%)

Yellow (25%)

Blue (27%)

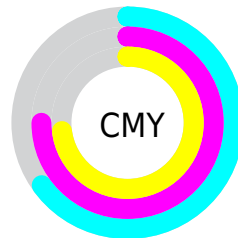


Cyan (0%)

Magenta (28%)

Yellow (22%)

Black (65%)



Cyan (65%)

Magenta (75%)

Yellow (73%)

Brightness & Saturation Gradients

These gradients show how the HunterLab color 24.9405, 6.6493, 2.1002 changes by changing the brightness by 10 percent. The first figure shows a shift by +10% for each color and the second figure -10%.

Similar to the brightness gradients but the following saturation gradients show a change of the HunterLab color 24.9405, 6.6493, 2.1002 by changing the saturation by 10% instead.

■ 24.9405, 6.6493,
2.1002

■ 24.9405, 6.6493,
2.1002

■ 126.8939, 6.4269,
8.1985

■ 17.2617, 6.2519,
1.5940

■ 42.8802, 7.1027,
3.2285

■ 10.5883, 5.7048,
1.1281

■ 52.9919, 7.1955,
3.8457

0.0000, INF, NaN

0.0000, NaN, NaN

■ 63.7933, 7.2142,
4.4961

0.0000, NaN, NaN

■ 75.2426, 7.1669,
5.1781

0.0000, NaN, NaN

■ 87.3052, 7.0598,
5.8905

0.0000, NaN, NaN

0.0000, NaN, NaN

■ 99.9512, 6.8981,

113.1550, 6.6860,
7.4017

■ 24.9405, 6.6493,
2.1002

■ 24.9405, 6.6493,
2.1002

■ 22.8308, 9.7485,
2.4484

■ 27.2022, 3.6103,
1.8740

■ 20.8979, 12.8721,
2.9335

■ 29.5921, 0.6496,
1.7513

■ 19.1737, 15.9446,
3.5674

■ 32.0930, -2.2314,
1.7168

■ 17.6927, 18.8424,
4.3489

■ 34.6903, -5.0376,
1.7567

■ 16.4889, 21.3902,
5.2555

■ 37.3725, -7.7766,
1.8595

■ 15.5884, 23.3850,
6.2358

■ 40.1299, -10.4572,
2.0156

■ 14.8605, 25.1301,
7.1108

■ 42.9548, -13.0881,
2.2173

■ 14.7203, 25.5010,
7.2473

■ 45.8408, -15.6771,
2.4581

■ 48.7824, -18.2314,
2.7327

Harmonies

Analogous

The Analogous color harmony consists of three colors that are next to each other on the color wheel.



24.9411, 5.9653, -1.7490



24.9405, 6.6493, 2.1002



24.9411, 5.0883, 5.2306

Triad

The Triadic color harmony groups three colors that are evenly spaced from another and form a triangle on the color wheel.



24.9411, 6.6484, 2.1007



24.9411, -5.6279, 6.5064



24.9411, -4.3339, -6.1557

Complementary

The Complementary color scheme is a pair of colors which are on the opposite of each other on the color wheel.



24.9405, 6.6493, 2.1002



29.7909, -8.4709, 1.5150

Split Complementary

Split-complementary colors differ from the complementary color scheme. The scheme consists of three colors, the original color and two neighbors of the complement color.



24.9411, -7.1624, -3.2573



24.9405, 6.6493, 2.1002



24.9411, -7.8764, 4.1097

Square

The Square scheme is like the rectangle color scheme, but the four colors are evenly spaced on the color wheel.



24.9411, 6.6484, 2.1007



24.9411, -2.1206, 7.5079



24.9411, -8.4204, 0.5910



24.9411, -0.5337, -6.9146

Rectangle

The Rectangle color scheme consists of four colors that form a rectangle on the color wheel.



24.9405, 6.6493, 2.1002



24.9411, 3.0399, 6.6195



24.9411, -8.4204, 0.5910



24.9411, -5.4223, -5.3796

Sweetspot

The Sweet Spot groups the original color and five complimentary colors.



24.9411, 6.6484, 2.1007



38.6234, 0.9118, 2.2906



25.0463, 8.1442, -6.7972



19.2659, 0.6687, 1.1589



70.1359, -3.7423, 3.8106



20.7927, -1.1094, 1.1297

Same Dimension

The Same Dimension uses a secret algorithm to generate beautiful new colors.



24.9411, 6.6484, 2.1007



30.6483, 11.5126, 3.0449



26.5793, 2.7167, 5.6050



14.5795, 0.4172, 0.8701



17.8541, 30.8876, 9.1190



42.1884, 72.7336, 23.5041

Inverse Universe

The Inverse Universe completely reimagines the original color for something new.



24.9411, 6.6484, 2.1007



30.6483, 11.5126, 3.0449



27.8763, -4.6172, -3.0053



14.5795, 0.4172, 0.8701



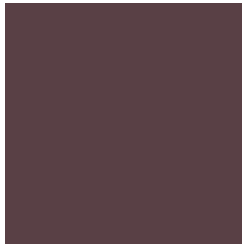
17.8541, 30.8876, 9.1190



42.1884, 72.7336, 23.5041

Previews

White Background



This preview shows how the HunterLab color 24.9405, 6.6493, 2.1002 looks on a white background.

Color Contrast Check

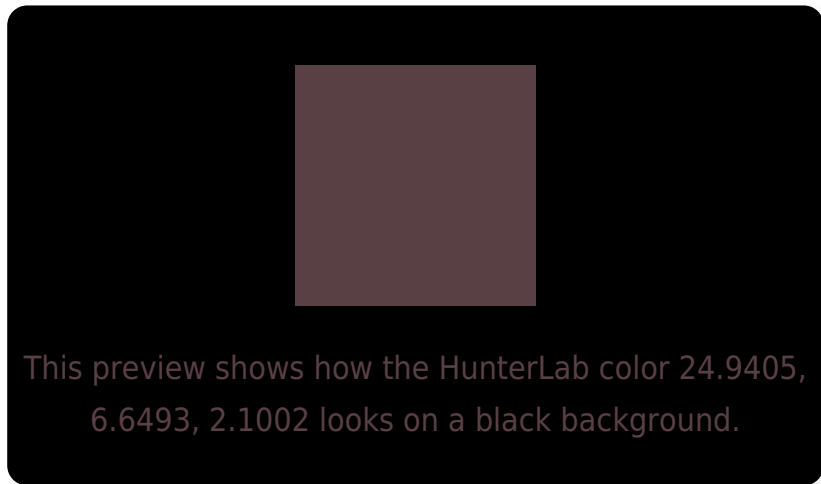
Large Text (above 18pt) WCAG AA ✓ Pass

Any Text WCAG AA ✓ Pass

Large Text (above 18pt) WCAG AAA ✓ Pass

Any Text WCAG AAA ✓ Pass

Black Background



Color Contrast Check

Large Text (above 18pt) WCAG AA × Fail

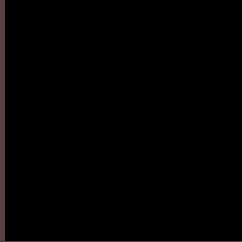
Any Text WCAG AA × Fail

Large Text (above 18pt) WCAG AAA × Fail

Any Text WCAG AAA × Fail

If you want to check with other color combinations, try the [Color Contrast Checker](#).

HunterLab 24.9405, 6.6493, 2.1002 Background



This preview shows how black text looks on a background with the HunterLab color 24.9405, 6.6493, 2.1002.

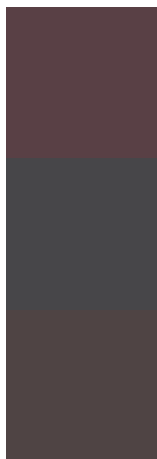


This preview shows how white text looks on a background with the HunterLab color 24.9405, 6.6493,

Color Blindness Simulation

Color vision deficiency is a very complex topic, and I could not describe the different causes any better than Wikipedia does, so if you want to learn more, you should check out their [article about color blindness](#).

Dichromacy



Original Color

24.9405, 6.6493, 2.1002

Protanopia

24.9017, -0.6313, 0.3253

Deuteranopia

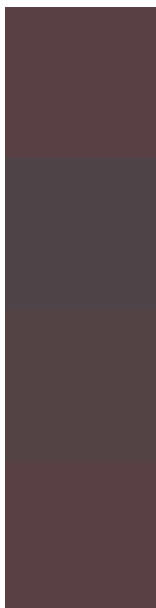
24.9276, 1.7396, 2.3832



Tritanopia

24.9405, 6.6493, 2.1002

Trichromacy



Original Color

24.9405, 6.6493, 2.1002

Protanomaly

24.9436, 1.9957, 0.8322

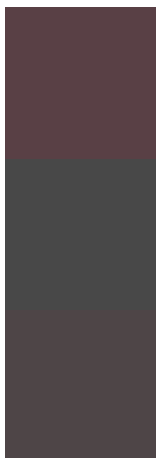
Deuteranomaly

25.0413, 3.3511, 2.5405

Tritanomaly

24.9405, 6.6493, 2.1002

Monochromacy



Original Color

24.9405, 6.6493, 2.1002

Achromatopsia

25.4565, -1.3583, 1.3831

Achromatomaly

25.1612, 1.4231, 1.4821

CSS Examples

Text

The CSS property to change the color of the text to HunterLab 24.9405, 6.6493, 2.1002 is called "color". The color property can be set on classes, ids or directly on the HTML element.

This example shows how text in the color `rgb(89, 64, 69)` looks like.

```
.text, #text, p{  
    color:rgb(89, 64, 69)  
}
```

If you want to add a text shadow in that color use the text-shadow property, you can generate a text shadow directly with our [CSS Text Shadow Generator](#).

Here you see how black text with a 4 pixel rgb(89, 64, 69) colored shadow looks like.

```
.shadow{ text-shadow: 4px 4px 2px rgb(89, 64, 69) }
```

Border

The CSS property to change the border of an element to HunterLab 24.9405, 6.6493, 2.1002 is called "border". The border property can be set on classes, ids or directly on the HTML element.

This example shows the color as border, it can be applied via the CSS property "border" or "border-color".

```
.border, #border, table{ border:4px solid rgb(89, 64, 69) }
```


If only the border color should be changed use the property `border-color`.

```
.border{ border-color:rgb(89, 64, 69) }
```

If you want to add a box shadow in that color use:

Here you see how a box with a 4 pixel `rgb(89, 64, 69)` colored shadow looks like.

```
.boxshadow{ -moz-box-shadow:4px 4px 4px  
4px rgb(89, 64, 69); -webkit-box-  
shadow:4px 4px 4px 4px rgb(89, 64, 69);  
box-shadow:4px 4px 4px 4px rgb(89, 64, 69)  
}
```

Background

The CSS property to change the background color of an element to HunterLab 24.9405, 6.6493, 2.1002 is called "background". The background property can be set on classes, ids or directly on the HTML element.

```
.background, #background, body{  
background: rgb(89, 64, 69) }
```

If only the background color should be changed can be used:

```
.background{ background-color: rgb(89, 64,  
69) }
```

This example shows the color as background, it is applied via the CSS property "background".

To optimize and compress your CSS code, you can use our [online CSS compressor and optimizer](#) based on csstidy. If you want to create a linear or radial gradient as background or border, check our [CSS Gradient Generator](#).

Hey! You found this booklet interesting? Support Converting Colors with the new Membership Option!

The pro membership hides all ads, plus gives you double the colors in the color bucket, and more awesome pro features!

[Learn more, Memberships starting at \\$2.50/m!](#)

**Follow me
on Twitter!**

@ConvertingColor