

Converting Colors

HunterLab(25.0336, 12.1408,
5.3915)

Have a look what the booklet for
HunterLab(25.0336, 12.1408,
5.3915) contains.

HunterLab(25.0578, 12.1330, 5.5378)	3
<i>Conversions</i>	4
<i>Details</i>	6
<i>Harmonies</i>	12
<i>Previews</i>	24
<i>Color Blindness Simulation</i>	28
<i>CSS Examples</i>	31

Color

**HunterLab(25.0578, 12.1330,
5.5378)**

Conversions

Conversions Part 1

Format	Color
Hex	663B3C
RGB	102, 59, 60
RGB Percent	40%, 23%, 24%
CMY	0.6000, 0.7686, 0.7647
CMYK	0.00, 0.42, 0.41, 0.60
HSL	359°, 27%, 32%
HSV	359°, 42%, 40%
XYZ	7.8590, 6.2789, 5.0727
YIQ	71.9710, 25.3070, 9.4270

Conversions

Conversions Part 2

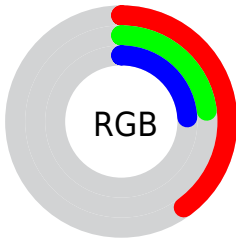
Format	Color
R_{YB}	102, 59, 60
Decimal	6699836
CIE _{Lab}	30.11, 19.10, 7.53
CIE _{LCh}	30, 20.526, 21.515
Yxy	6.2792, 0.4091, 0.3269
Android (android.graphics.Color)	4284889916 (0xFF663B3C)
YUV	71.9710, -5.9017, 26.3354
Hunter-Lab	25.0578, 12.1330, 5.5378

Details

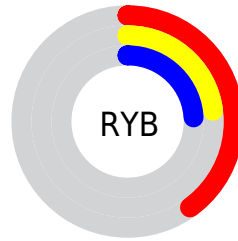
The HunterLab color **25.0578, 12.1330, 5.5378** is a dark color, and the websafe version is hex **663333**. A complement of this color would be **33.7228, -11.8833, -1.0756**, and the grayscale version is **25.4606, -1.3585, 1.3833**.

A 20% lighter version of the original color is **43.0645, 13.4597, 7.6210**, and **10.6874, 10.4954, 3.5945** is the 20% darker color. If you saturate the color by 10%, you get **22.8813, 15.7051, 6.5442**, and if you desaturate by 10%, it is **27.4732, 8.6068, 4.5876**.

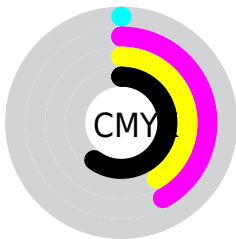
Distribution



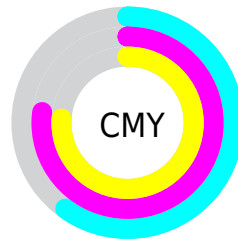
- Red (40%)
- Green (23%)
- Blue (24%)



- Red (40%)
- Yellow (23%)
- Blue (24%)



- Cyan (0%)
- Magenta (42%)
- Yellow (41%)
- Black (60%)



- Cyan (60%)
- Magenta (77%)
- Yellow (76%)

Brightness & Saturation Gradients

These gradients show how the HunterLab color 25.0578, 12.1330, 5.5378 changes by changing the brightness by 10 percent. The first figure shows a shift by +10% for each color and the second figure -10%.

Similar to the brightness gradients but the following saturation gradients show a change of the HunterLab color 25.0578, 12.1330, 5.5378 by changing the saturation by 10% instead.

■ 25.0578, 12.1330,
5.5378

■ 25.0578, 12.1330,
5.5378

■ 127.0956, 14.9601,
14.5636

■ 17.3655, 11.3023,
4.5402

■ 43.0207, 13.3816,
7.4892

■ 10.6766, 10.3046,
3.6311

■ 53.1428, 13.8407,
8.4649

■ 1.0849, 76.6387,
0.7594

■ 63.9537, 14.2079,
9.4485

0.0000, NaN, NaN

0.0000, NaN, NaN

■ 75.4121, 14.4934,
10.4431

0.0000, NaN, NaN

■ 87.4832, 14.7053,
11.4508

0.0000, NaN, NaN

0.0000, NaN, NaN

■ 100.1375, 14.8502,

12.4728

0.0000, NaN, NaN

113.3492, 14.9336,
13.5103

■ 25.0578, 12.1330,
5.5378

■ 25.0578, 12.1330,
5.5378

■ 22.8813, 15.7051,
6.5442

■ 27.4732, 8.6068,
4.5876

■ 20.9847, 19.2160,
7.5765

■ 30.0884, 5.1865,
3.7038

■ 19.4135, 22.4826,
8.5821

■ 32.8734, 1.8914,
2.8878

■ 18.2072, 25.2609,
9.4838

■ 35.8031, -1.2779,
2.1350

■ 17.3805, 27.3241,
10.1905

■ 38.8575, -4.3307,
1.4387

■ 16.8225, 28.8398,
10.6313

■ 42.0206, -7.2803,
0.7918

■ 45.2794, -10.1407,
0.1875

■ 48.6234, -12.9254,
-0.3806

■ 52.0442, -15.6466,
-0.9176

Harmonies

Analogous

The Analogous color harmony consists of three colors that are next to each other on the color wheel.



25.0584, 13.0664, -0.5562



25.0578, 12.1330, 5.5378



25.0584, 7.3972, 9.3239

Triad

The Triadic color harmony groups three colors that are evenly spaced from another and form a triangle on the color wheel.



25.0584, 12.1317, 5.5382



25.0584, -10.8385, 7.9761



25.0584, -3.2525, -14.4643

Complementary

The Complementary color scheme is a pair of colors which are on the opposite of each other on the color wheel.



25.0578, 12.1330, 5.5378



33.7228, -11.8833, -1.0756

Split Complementary

Split-complementary colors differ from the complementary color scheme. The scheme consists of three colors, the original color and two neighbors of the complement color.



25.0584, -9.0203, -10.5610



25.0578, 12.1330, 5.5378



25.0584, -13.0814, 3.1433

Square

The Square scheme is like the rectangle color scheme, but the four colors are evenly spaced on the color wheel.



25.0584, 12.1317, 5.5382



25.0584, -5.9888, 10.4456



25.0584, -12.4535, -3.6807



25.0584, 3.6780, -13.3183

Rectangle

The Rectangle color scheme consists of four colors that form a rectangle on the color wheel.



25.0578, 12.1330, 5.5378



25.0584, 2.9763, 10.5757



25.0584, -12.4535, -3.6807



25.0584, -5.3796, -13.6683

Sweetspot

The Sweet Spot groups the original color and five complimentary colors.



25.0584, 12.1317, 5.5382



43.0740, 3.0277, 3.9514



26.1329, 17.6598, -12.1073



20.6209, 1.8161, 2.0037



73.3645, -3.9145, 3.9860



23.4461, -1.2510, 1.2739

Same Dimension

The Same Dimension uses a secret algorithm to generate beautiful new colors.



25.0584, 12.1317, 5.5382



30.2183, 20.9445, 8.7086



29.5675, 3.0120, 9.9743



16.8742, 0.4260, 1.3167



19.0624, 32.6755, 12.0804



43.5130, 74.5457, 27.8976

Inverse Universe

The Inverse Universe completely reimagines the original color for something new.



25.0584, 12.1317, 5.5382



30.2183, 20.9445, 8.7086



28.1317, -3.4538, -9.2189



16.8742, 0.4260, 1.3167



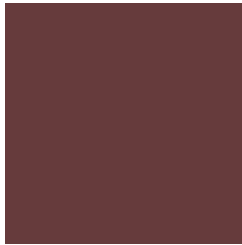
19.0624, 32.6755, 12.0804



43.5130, 74.5457, 27.8976

Previews

White Background



This preview shows how the HunterLab color 25.0578, 12.1330, 5.5378 looks on a white background.

Color Contrast Check

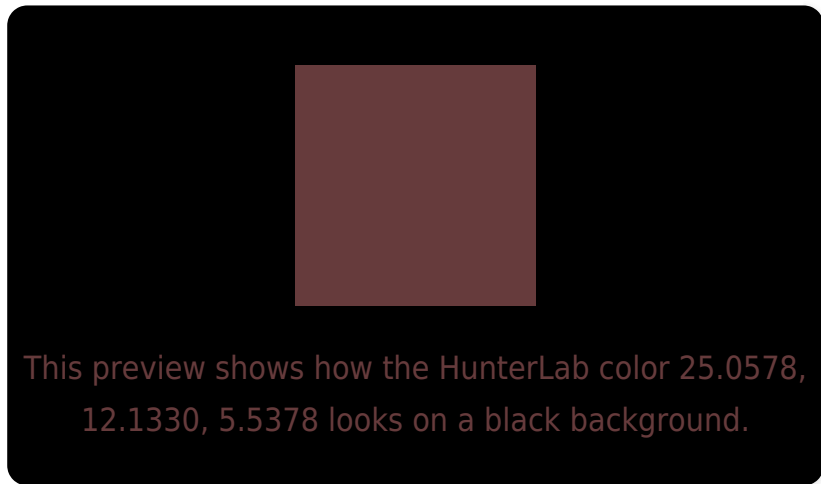
Large Text (above 18pt) WCAG AA ✓ Pass

Any Text WCAG AA ✓ Pass

Large Text (above 18pt) WCAG AAA ✓ Pass

Any Text WCAG AAA ✓ Pass

Black Background



Color Contrast Check

Large Text (above 18pt) WCAG AA × Fail

Any Text WCAG AA × Fail

Large Text (above 18pt) WCAG AAA × Fail

Any Text WCAG AAA × Fail

If you want to check with other color combinations, try the [Color Contrast Checker](#).

HunterLab 25.0578, 12.1330, 5.5378 Background



This preview shows how black text looks on a background with the HunterLab color 25.0578, 12.1330, 5.5378.



This preview shows how white text looks on a background with the HunterLab color 25.0578, 12.1330,

Color Blindness Simulation

Color vision deficiency is a very complex topic, and I could not describe the different causes any better than Wikipedia does, so if you want to learn more, you should check out their [article about color blindness](#).

Dichromacy



Original Color

25.0578, 12.1330, 5.5378

Protanopia

25.2105, -1.2065, 3.3917

Deuteranopia

25.2997, 1.2975, 6.2312



Tritanopia

25.1229, 12.4539, 4.6004

Trichromacy



Original Color

25.0578, 12.1330, 5.5378

Protanomaly

25.0386, 3.1536, 3.9981

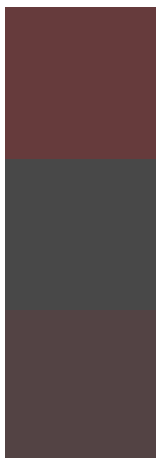
Deuteranomaly

25.0400, 5.3399, 5.7258

Tritanomaly

25.1008, 12.3451, 4.9181

Monochromacy



Original Color

25.0578, 12.1330, 5.5378

Achromatopsia

25.4565, -1.3583, 1.3831

Achromatomaly

25.0413, 3.3511, 2.5405

CSS Examples

Text

The CSS property to change the color of the text to HunterLab 25.0578, 12.1330, 5.5378 is called "color". The color property can be set on classes, ids or directly on the HTML element.

This example shows how text in the color `rgb(102, 59, 60)` looks like.

```
.text, #text, p{  
    color:rgb(102, 59, 60)  
}
```

If you want to add a text shadow in that color use the text-shadow property, you can generate a text shadow directly with our [CSS Text Shadow Generator](#).

Here you see how black text with a 4 pixel rgb(102, 59, 60) colored shadow looks like.

```
.shadow{ text-shadow: 4px 4px 2px rgb(102, 59, 60) }
```

Border

The CSS property to change the border of an element to HunterLab 25.0578, 12.1330, 5.5378 is called "border". The border property can be set on classes, ids or directly on the HTML element.

This example shows the color as border, it can be applied via the CSS property "border" or "border-color".

```
.border, #border, table{ border:4px solid rgb(102, 59, 60) }
```


If only the border color should be changed use the property border-color.

```
.border{ border-color:rgb(102, 59, 60) }
```

If you want to add a box shadow in that color use:

Here you see how a box with a 4 pixel rgb(102, 59, 60) colored shadow looks like.

```
.boxshadow{ -moz-box-shadow:4px 4px 4px  
4px rgb(102, 59, 60); -webkit-box-  
shadow:4px 4px 4px 4px rgb(102, 59, 60);  
box-shadow:4px 4px 4px 4px rgb(102, 59,  
60) }
```

Background

The CSS property to change the background color of an element to HunterLab 25.0578, 12.1330, 5.5378 is called "background". The background property can be set on classes, ids or directly on the HTML element.

```
.background, #background, body{  
background: rgb(102, 59, 60) }
```

If only the background color should be changed can be used:

```
.background{ background-color: rgb(102, 59,  
60) }
```

This example shows the color as background, it is applied via the CSS property "background".

To optimize and compress your CSS code, you can use our [online CSS compressor and optimizer](#) based on csstidy. If you want to create a linear or radial gradient as background or border, check our [CSS Gradient Generator](#).

Hey! You found this booklet interesting? Support Converting Colors with the new Membership Option!

The pro membership hides all ads, plus gives you double the colors in the color bucket, and more awesome pro features!

[Learn more, Memberships starting at \\$2.50/m!](#)

**Follow me
on Twitter!**

@ConvertingColor