

Converting Colors

HunterLab(25.1267, 1.7287,
7.8480)

Have a look what the booklet for
HunterLab(25.1267, 1.7287, 7.8480)
contains.

HunterLab(25.1266, 1.7305, 7.8471)	3
<i>Conversions</i>	4
<i>Details</i>	6
<i>Harmonies</i>	12
<i>Previews</i>	24
<i>Color Blindness Simulation</i>	28
<i>CSS Examples</i>	31

Color

**HunterLab(25.1266, 1.7305,
7.8471)**

Conversions

Conversions Part 1

Format	Color
Hex	554434
RGB	85, 68, 52
RGB Percent	33%, 27%, 20%
CMY	0.6667, 0.7333, 0.7961
CMYK	0.00, 0.20, 0.39, 0.67
HSL	29°, 24%, 27%
HSV	29°, 39%, 33%
XYZ	6.4333, 6.3135, 4.1284
YIQ	71.2590, 15.2680, -1.3720

Conversions

Conversions Part 2

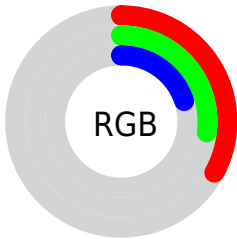
Format	Color
R_{YB}	85, 83, 52
Decimal	5588020
CIE _{Lab}	30.19, 4.67, 12.45
CIE _{LCh}	30, 13.296, 69.431
Yxy	6.3138, 0.3812, 0.3741
Android (android.graphics.Color)	4283778100 (0xFF554434)
YUV	71.2590, -9.4947, 12.0509
Hunter-Lab	25.1266, 1.7305, 7.8471

Details

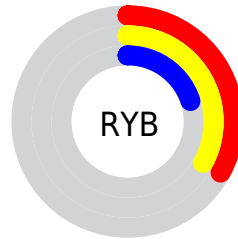
The HunterLab color **25.1266, 1.7305, 7.8471** is a dark color, and the websafe version is hex **333333**. A complement of this color would be **23.7529, -2.6111, -6.8617**, and the grayscale version is **25.2228, -1.3458, 1.3704**.

A 20% lighter version of the original color is **43.0610, 1.2860, 10.3033**, and **10.6861, 1.7228, 5.4996** is the 20% darker color. If you saturate the color by 10%, you get **23.9456, 2.8503, 9.0261**, and if you desaturate by 10%, it is **26.3571, 0.7215, 6.4804**.

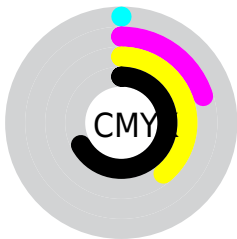
Distribution



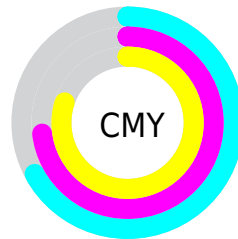
- Red (33%)
- Green (27%)
- Blue (20%)



- Red (33%)
- Yellow (33%)
- Blue (20%)



- Cyan (0%)
- Magenta (20%)
- Yellow (39%)
- Black (67%)



- Cyan (67%)
- Magenta (73%)
- Yellow (80%)

Brightness & Saturation Gradients

These gradients show how the HunterLab color 25.1266, 1.7305, 7.8471 changes by changing the brightness by 10 percent. The first figure shows a shift by +10% for each color and the second figure -10%.

Similar to the brightness gradients but the following saturation gradients show a change of the HunterLab color 25.1266, 1.7305, 7.8471 by changing the saturation by 10% instead.

■ 25.1266, 1.7305,
7.8471

■ 25.1266, 1.7305,
7.8471

■ 127.2137, -1.6011,
19.3060

■ 17.4264, 1.8056,
6.4278

■ 43.1030, 1.3490,
10.4949

■ 10.7283, 1.7813,
5.5310

■ 53.2311, 1.0658,
11.7705

■ 1.4527, 13.9342,
1.0169

■ 64.0476, 0.7298,
13.0311

0.0000, NaN, NaN

0.0000, NaN, NaN

■ 75.5113, 0.3460,
14.2841

0.0000, NaN, NaN

■ 87.5875, -0.0818,
15.5348

0.0000, NaN, NaN

0.0000, NaN, NaN

■ 100.2466, -0.5506,

113.4629, -1.0578,
18.0434

■ 25.1266, 1.7305,
7.8471

■ 25.1266, 1.7305,
7.8471

■ 23.9456, 2.8503,
9.0261

■ 26.3571, 0.7215,
6.4804

■ 22.8164, 4.0877,
9.9988

■ 27.6316, -0.1795,
4.9421

■ 21.7438, 5.4434,
10.7482

■ 28.9473, -0.9800,
3.2487

■ 20.7321, 6.9153,
11.2594

■ 30.3012, -1.6868,
1.4148

■ 19.7858, 8.4955,
11.5231

■ 31.6905, -2.3066,
-0.5463

■ 18.8958, 10.1060,
11.7302

■ 33.1126, -2.8463,
-2.6227

■ 18.7942, 10.2936,
11.7611

■ 34.5653, -3.3121,
-4.8039

■ 36.0466, -3.7099,
-7.0808

■ 37.5546, -4.0452,
-9.4451

Harmonies

Analogous

The Analogous color harmony consists of three colors that are next to each other on the color wheel.



25.1272, 5.6009, 6.0003



25.1266, 1.7305, 7.8471



25.1272, -2.7264, 8.1351

Triad

The Triadic color harmony groups three colors that are evenly spaced from another and form a triangle on the color wheel.



25.1272, 1.7295, 7.8474



25.1272, -9.2246, -0.0004



25.1272, 4.3161, -5.7517

Complementary

The Complementary color scheme is a pair of colors which are on the opposite of each other on the color wheel.



25.1266, 1.7305, 7.8471



23.7529, -2.6111, -6.8617

Split Complementary

Split-complementary colors differ from the complementary color scheme. The scheme consists of three colors, the original color and two neighbors of the complement color.



25.1272, 0.0729, -8.0397



25.1266, 1.7305, 7.8471



25.1272, -7.6045, -4.3593

Square

The Square scheme is like the rectangle color scheme, but the four colors are evenly spaced on the color wheel.



25.1272, 1.7295, 7.8474



25.1272, -8.8489, 4.0580



25.1272, -4.2729, -7.4900



25.1272, 7.1648, -1.6574

Rectangle

The Rectangle color scheme consists of four colors that form a rectangle on the color wheel.



25.1266, 1.7305, 7.8471



25.1272, -5.4027, 7.4648



25.1272, -4.2729, -7.4900



25.1272, 2.9940, -6.7873

Sweetspot

The Sweet Spot groups the original color and five complimentary colors.



25.1272, 1.7295, 7.8474



37.1771, -0.9208, 5.0536



21.9491, 10.7909, -1.5169



18.7615, -0.4320, 2.6319



69.0652, -3.6851, 3.7524



19.9203, -1.0629, 1.0823

Same Dimension

The Same Dimension uses a secret algorithm to generate beautiful new colors.



25.1272, 1.7295, 7.8474



31.3077, 3.6790, 11.7463



29.3086, -5.1768, 11.3968



15.0391, -0.5099, 1.6858



23.6264, 13.8097, 14.8002



54.3824, 36.5144, 34.1494

Inverse Universe

The Inverse Universe completely reimagines the original color for something new.



23.7529, -2.6111, -6.8617



29.0943, -3.2514, -11.9881



19.7266, 4.4658, -13.5973



14.8718, -1.0446, -0.1008



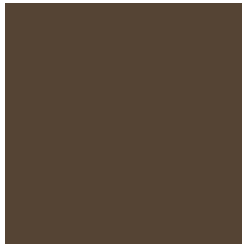
19.5240, 2.7070, -30.2471



44.2846, 10.1940, -77.3577

Previews

White Background



This preview shows how the HunterLab color 25.1266, 1.7305, 7.8471 looks on a white background.

Color Contrast Check

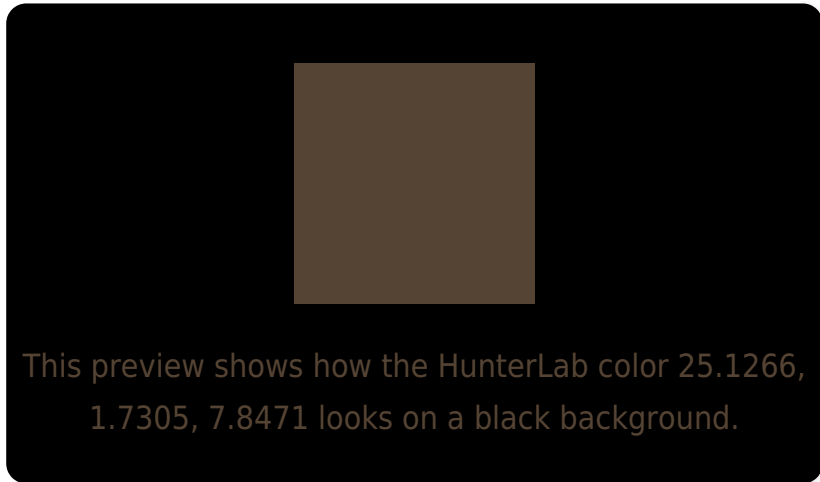
Large Text (above 18pt) WCAG AA ✓ Pass

Any Text WCAG AA ✓ Pass

Large Text (above 18pt) WCAG AAA ✓ Pass

Any Text WCAG AAA ✓ Pass

Black Background



Color Contrast Check

Large Text (above 18pt) WCAG AA × Fail

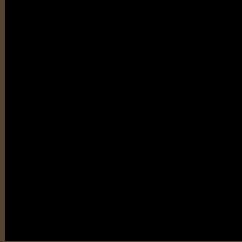
Any Text WCAG AA × Fail

Large Text (above 18pt) WCAG AAA × Fail

Any Text WCAG AAA × Fail

If you want to check with other color combinations, try the [Color Contrast Checker](#).

HunterLab 25.1266, 1.7305, 7.8471 Background



This preview shows how black text looks on a background with the HunterLab color 25.1266, 1.7305, 7.8471.



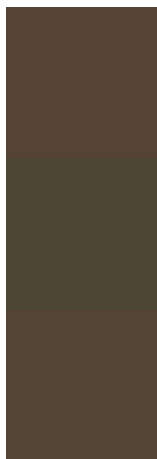
This preview shows how white text looks on a background with the HunterLab color 25.1266, 1.7305,

7.8471.

Color Blindness Simulation

Color vision deficiency is a very complex topic, and I could not describe the different causes any better than Wikipedia does, so if you want to learn more, you should check out their [article about color blindness](#).

Dichromacy



Original Color

25.1266, 1.7305, 7.8471

Protanopia

25.0998, -2.1346, 7.4729

Deuteranopia

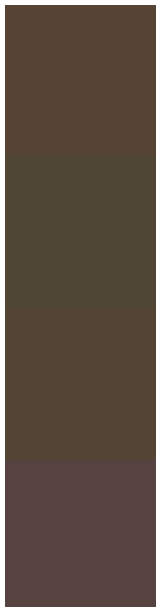
25.0340, 1.4189, 7.7562



Tritanopia

25.2539, 5.3964, 1.6603

Trichromacy



Original Color

25.1266, 1.7305, 7.8471

Protanomaly

25.0991, -0.8455, 7.4947

Deuteranomaly

25.0340, 1.4189, 7.7562

Tritanomaly

25.2248, 3.7659, 4.2084

Monochromacy



Original Color

25.1266, 1.7305, 7.8471

Achromatopsia

25.1018, -1.3394, 1.3638

Achromatomaly

25.0739, -0.4816, 3.9724

CSS Examples

Text

The CSS property to change the color of the text to HunterLab 25.1266, 1.7305, 7.8471 is called "color". The color property can be set on classes, ids or directly on the HTML element.

This example shows how text in the color `rgb(85, 68, 52)` looks like.

```
.text, #text, p{  
    color:rgb(85, 68, 52)  
}
```

If you want to add a text shadow in that color use the text-shadow property, you can generate a text shadow directly with our [CSS Text Shadow Generator](#).

Here you see how black text with a 4 pixel rgb(85, 68, 52) colored shadow looks like.

```
.shadow{ text-shadow: 4px 4px 2px rgb(85, 68, 52) }
```

Border

The CSS property to change the border of an element to HunterLab 25.1266, 1.7305, 7.8471 is called "border". The border property can be set on classes, ids or directly on the HTML element.

This example shows the color as border, it can be applied via the CSS property "border" or "border-color".

```
.border, #border, table{ border:4px solid rgb(85, 68, 52) }
```


If only the border color should be changed use the property `border-color`.

```
.border{ border-color:rgb(85, 68, 52) }
```

If you want to add a box shadow in that color use:

Here you see how a box with a 4 pixel `rgb(85, 68, 52)` colored shadow looks like.

```
.boxshadow{ -moz-box-shadow:4px 4px 4px  
4px rgb(85, 68, 52); -webkit-box-  
shadow:4px 4px 4px 4px rgb(85, 68, 52);  
box-shadow:4px 4px 4px 4px rgb(85, 68, 52)  
}
```

Background

The CSS property to change the background color of an element to HunterLab 25.1266, 1.7305, 7.8471 is called "background". The background property can be set on classes, ids or directly on the HTML element.

```
.background, #background, body{  
background: rgb(85, 68, 52) }
```

If only the background color should be changed can be used:

```
.background{ background-color: rgb(85, 68,  
52) }
```

This example shows the color as background, it is applied via the CSS property "background".

To optimize and compress your CSS code, you can use our [online CSS compressor and optimizer](#) based on csstidy. If you want to create a linear or radial gradient as background or border, check our [CSS Gradient Generator](#).

Hey! You found this booklet interesting? Support Converting Colors with the new Membership Option!

The pro membership hides all ads, plus gives you double the colors in the color bucket, and more awesome pro features!

[Learn more, Memberships starting at \\$2.50/m!](#)

**Follow me
on Twitter!**

@ConvertingColor