

Converting Colors

HunterLab(25.1417, 7.4561,
-0.4514)

Have a look what the booklet for
HunterLab(25.1417, 7.4561, -0.4514)
contains.

HunterLab(25.1246, 7.5952, -0.5207)	3
<i>Conversions</i>	4
<i>Details</i>	6
<i>Harmonies</i>	12
<i>Previews</i>	24
<i>Color Blindness Simulation</i>	28
<i>CSS Examples</i>	31

Color

**HunterLab(25.1246, 7.5952,
-0.5207)**

Conversions

Conversions Part 1

Format	Color
Hex	59404C
RGB	89, 64, 76
RGB Percent	35%, 25%, 30%
CMY	0.6510, 0.7490, 0.7020
CMYK	0.00, 0.28, 0.15, 0.65
HSL	331°, 16%, 30%
HSV	331°, 28%, 35%
XYZ	7.2577, 6.3125, 7.6734
YIQ	72.8430, 11.0480, 9.0320

Conversions

Conversions Part 2

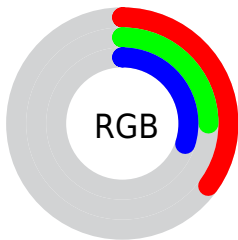
Format	Color
RYB	89, 64, 76
Decimal	5849164
CIELab	30.19, 13.04, -2.98
CIElCh	30, 13.375, 347.140
Yxy	6.3127, 0.3416, 0.2972
Android (android.graphics.Color)	4284039244 (0xFF59404C)
YUV	72.8430, 1.5564, 14.1697
Hunter-Lab	25.1246, 7.5952, -0.5207

Details

The HunterLab color $25.1246, 7.5952, -0.5207$ is a dark color, and the websafe version is hex 333333 . A complement of this color would be $29.6155, -9.4761, 4.0258$, and the grayscale version is $25.7485, -1.3739, 1.3990$.

A 20% lighter version of the original color is $43.0790, 8.0766, -0.0168$, and $10.7434, 6.5390, -0.8068$ is the 20% darker color. If you saturate the color by 10%, you get $23.0775, 10.9753, -1.0644$, and if you desaturate by 10%, it is $27.3216, 4.2402, 0.1744$.

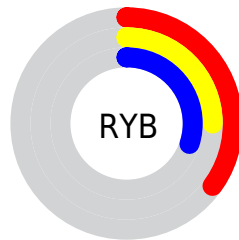
Distribution



Red (35%)

Green (25%)

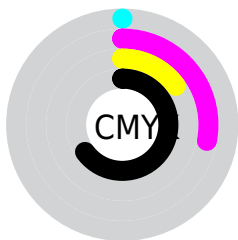
Blue (30%)



Red (35%)

Yellow (25%)

Blue (30%)

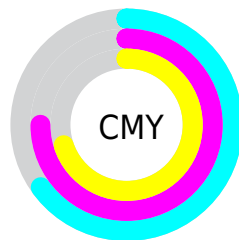


Cyan (0%)

Magenta (28%)

Yellow (15%)

Black (65%)



Cyan (65%)

Magenta (75%)

Yellow (70%)

Brightness & Saturation Gradients

These gradients show how the HunterLab color 25.1246, 7.5952, -0.5207 changes by changing the brightness by 10 percent. The first figure shows a shift by +10% for each color and the second figure -10%.

Similar to the brightness gradients but the following saturation gradients show a change of the HunterLab color 25.1246, 7.5952, -0.5207 by changing the saturation by 10% instead.

■ 25.1246, 7.5952,
-0.5207

■ 25.1246, 7.5952,
-0.5207

■ 127.2102, 7.9097,
3.7612

■ 17.4246, 7.1202,
-0.7397

■ 43.1006, 8.1897,
0.1113

■ 10.7268, 6.4905,
-0.8781

■ 53.2285, 8.3470,
0.5078

■ 1.4433, 39.2912,
-8.4712

■ 64.0449, 8.4270,
0.9512

0.0000, NaN, NaN

0.0000, NaN, NaN

■ 75.5084, 8.4381,
1.4378

0.0000, NaN, NaN

■ 87.5845, 8.3870,
1.9643

0.0000, NaN, NaN

0.0000, NaN, NaN

■ 100.2434, 8.2791,

2.5284

0.0000, NaN, NaN

113.4595, 8.1187,
3.1280

■ 25.1246, 7.5952,
-0.5207

■ 25.1246, 7.5952,
-0.5207

■ 23.0775, 10.9753,
-1.0644

■ 27.3216, 4.2402,
0.1744

■ 21.2035, 14.3324,
-1.4197

■ 29.6457, 0.9385,
0.9884

■ 19.5319, 17.5776,
-1.5415

■ 32.0804, -2.3011,
1.8976

■ 18.0938, 20.5766,
-1.3843

■ 34.6115, -5.4777,
2.8835

■ 16.9190, 23.1502,
-0.9128

■ 37.2275, -8.5953,
3.9320

■ 16.0296, 25.1017,
-0.1184

■ 39.9191, -11.6601,
5.0324

■ 15.2960, 26.7434,
0.8085

■ 42.6783, -14.6789,
6.1766

■ 15.1533, 27.0877,
0.9754

■ 45.4987, -17.6586,
7.3581

■ 48.3750, -20.6054,
8.5721

Harmonies

Analogous

The Analogous color harmony consists of three colors that are next to each other on the color wheel.



25.1252, 5.2708, -4.8507



25.1246, 7.5952, -0.5207



25.1252, 7.4060, 3.6589

Triad

The Triadic color harmony groups three colors that are evenly spaced from another and form a triangle on the color wheel.



25.1252, 7.5943, -0.5202



25.1252, -3.8241, 7.9909



25.1252, -6.9228, -5.3908

Complementary

The Complementary color scheme is a pair of colors which are on the opposite of each other on the color wheel.



25.1246, 7.5952, -0.5207



29.6155, -9.4761, 4.0258

Split Complementary

Split-complementary colors differ from the complementary color scheme. The scheme consists of three colors, the original color and two neighbors of the complement color.



25.1252, -9.0359, -1.1621



25.1246, 7.5952, -0.5207



25.1252, -7.3344, 6.3158

Square

The Square scheme is like the rectangle color scheme, but the four colors are evenly spaced on the color wheel.



25.1252, 7.5943, -0.5202



25.1252, 0.5989, 8.1018



25.1252, -9.1811, 3.1195



25.1252, -3.2257, -7.9758

Rectangle

The Rectangle color scheme consists of four colors that form a rectangle on the color wheel.



25.1246, 7.5952, -0.5207



25.1252, 5.8800, 5.8185



25.1252, -9.1811, 3.1195



25.1252, -7.8304, -4.0840

Sweetspot

The Sweet Spot groups the original color and five complimentary colors.



25.1252, 7.5943, -0.5202



38.6948, 1.2969, 1.2732



24.4187, 6.1761, -7.7935



19.3065, 0.8876, 0.5793



70.1359, -3.7423, 3.8106



20.7927, -1.1094, 1.1297

Same Dimension

The Same Dimension uses a secret algorithm to generate beautiful new colors.



25.1252, 7.5943, -0.5202



30.9464, 13.0111, -1.2001



24.9164, 5.8451, 3.9129



14.6081, 0.5717, 0.4615



18.3701, 32.7799, 1.6337



43.3329, 76.9393, 6.8345

Inverse Universe

The Inverse Universe completely reimagines the original color for something new.



25.1252, 7.5943, -0.5202



30.9464, 13.0111, -1.2001



29.8111, -7.5279, -0.5596



14.6081, 0.5717, 0.4615



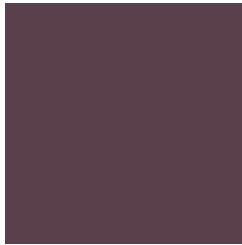
18.3701, 32.7799, 1.6337



43.3329, 76.9393, 6.8345

Previews

White Background



This preview shows how the HunterLab color 25.1246, 7.5952, -0.5207 looks on a white background.

Color Contrast Check

Large Text (above 18pt) WCAG AA ✓ Pass

Any Text WCAG AA ✓ Pass

Large Text (above 18pt) WCAG AAA ✓ Pass

Any Text WCAG AAA ✓ Pass

Black Background



This preview shows how the HunterLab color 25.1246, 7.5952, -0.5207 looks on a black background.

Color Contrast Check

Large Text (above 18pt) WCAG AA × Fail

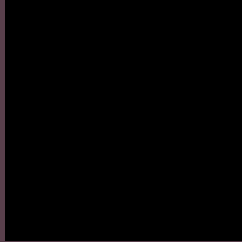
Any Text WCAG AA × Fail

Large Text (above 18pt) WCAG AAA × Fail

Any Text WCAG AAA × Fail

If you want to check with other color combinations, try the [Color Contrast Checker](#).

HunterLab 25.1246, 7.5952, -0.5207 Background



This preview shows how black text looks on a background with the HunterLab color 25.1246, 7.5952, -0.5207.



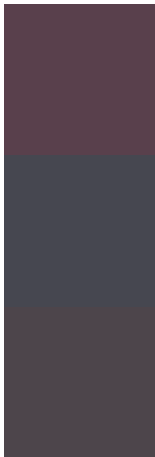
This preview shows how white text looks on a background with the HunterLab color 25.1246, 7.5952,

-0.5207.

Color Blindness Simulation

Color vision deficiency is a very complex topic, and I could not describe the different causes any better than Wikipedia does, so if you want to learn more, you should check out their [article about color blindness](#).

Dichromacy



Original Color

25.1246, 7.5952, -0.5207

Protanopia

25.2740, -0.2508, -2.2346

Deuteranopia

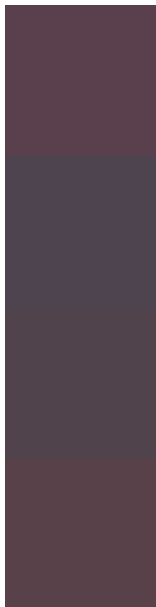
25.1834, 1.7083, -0.1241



Tritanopia

25.0948, 6.0196, 1.8787

Trichromacy



Original Color

25.1246, 7.5952, -0.5207

Protanomaly

25.0530, 2.7467, -2.0203

Deuteranomaly

25.0432, 3.7194, -0.2629

Tritanomaly

25.1459, 6.2844, 1.1492

Monochromacy



Original Color

25.1246, 7.5952, -0.5207

Achromatopsia

25.8120, -1.3773, 1.4024

Achromatomaly

25.5675, 1.6883, 0.7607

CSS Examples

Text

The CSS property to change the color of the text to HunterLab 25.1246, 7.5952, -0.5207 is called "color". The color property can be set on classes, ids or directly on the HTML element.

This example shows how text in the color `rgb(89, 64, 76)` looks like.

```
.text, #text, p{  
    color:rgb(89, 64, 76)  
}
```

If you want to add a text shadow in that color use the text-shadow property, you can generate a text shadow directly with our [CSS Text Shadow Generator](#).

Here you see how black text with a 4 pixel rgb(89, 64, 76) colored shadow looks like.

```
.shadow{ text-shadow: 4px 4px 2px rgb(89, 64, 76) }
```

Border

The CSS property to change the border of an element to HunterLab 25.1246, 7.5952, -0.5207 is called "border". The border property can be set on classes, ids or directly on the HTML element.

This example shows the color as border, it can be applied via the CSS property "border" or "border-color".

```
.border, #border, table{ border:4px solid rgb(89, 64, 76) }
```


If only the border color should be changed use the property `border-color`.

```
.border{ border-color:rgb(89, 64, 76) }
```

If you want to add a box shadow in that color use:

Here you see how a box with a 4 pixel `rgb(89, 64, 76)` colored shadow looks like.

```
.boxshadow{ -moz-box-shadow:4px 4px 4px  
4px rgb(89, 64, 76); -webkit-box-  
shadow:4px 4px 4px 4px rgb(89, 64, 76);  
box-shadow:4px 4px 4px 4px rgb(89, 64, 76)  
}
```

Background

The CSS property to change the background color of an element to HunterLab 25.1246, 7.5952, -0.5207 is called "background". The background property can be set on classes, ids or directly on the HTML element.

```
.background, #background, body{  
background: rgb(89, 64, 76) }
```

If only the background color should be changed can be used:

```
.background{ background-color: rgb(89, 64,  
76) }
```

This example shows the color as background, it is applied via the CSS property "background".

To optimize and compress your CSS code, you can use our [online CSS compressor and optimizer](#) based on csstidy. If you want to create a linear or radial gradient as background or border, check our [CSS Gradient Generator](#).

Hey! You found this booklet interesting? Support Converting Colors with the new Membership Option!

The pro membership hides all ads, plus gives you double the colors in the color bucket, and more awesome pro features!

[Learn more, Memberships starting at \\$2.50/m!](#)

**Follow me
on Twitter!**

@ConvertingColor