

Converting Colors

HunterLab(25.2940, 1.4457,
4.9286)

Have a look what the booklet for
HunterLab(25.2940, 1.4457, 4.9286)
contains.

HunterLab(25.2940, 1.4457, 4.9286)	3
<i>Conversions</i>	4
<i>Details</i>	6
<i>Harmonies</i>	12
<i>Previews</i>	24
<i>Color Blindness Simulation</i>	28
<i>CSS Examples</i>	31

Color

**HunterLab(25.2940, 1.4457,
4.9286)**

Conversions

Conversions Part 1

Format	Color
Hex	52453E
RGB	82, 69, 62
RGB Percent	32%, 27%, 24%
CMY	0.6784, 0.7294, 0.7569
CMYK	0.00, 0.16, 0.24, 0.68
HSL	21°, 14%, 28%
HSV	21°, 24%, 32%
XYZ	6.4773, 6.3979, 5.4509
YIQ	72.0890, 9.9950, 0.5790

Conversions

Conversions Part 2

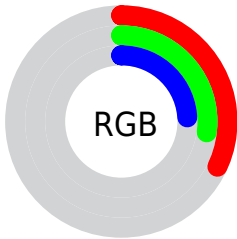
Format	Color
RYB	82, 73, 62
Decimal	5391678
CIELab	30.40, 4.25, 6.28
CIELCh	30, 7.584, 55.902
Yxy	6.3982, 0.3534, 0.3491
Android (android.graphics.Color)	4283581758 (0xFF52453E)
YUV	72.0890, -4.9739, 8.6919
Hunter-Lab	25.2940, 1.4457, 4.9286

Details

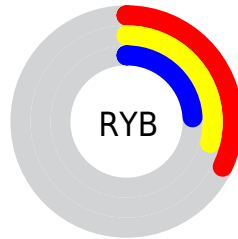
The HunterLab color **25.2940, 1.4457, 4.9286** is a dark color, and the websafe version is hex **333333**. A complement of this color would be **25.8172, -3.5192, -2.4855**, and the grayscale version is **25.5031, -1.3608, 1.3856**.

A 20% lighter version of the original color is **43.2808, 1.1234, 6.8695**, and **10.8748, 1.6281, 3.1212** is the 20% darker color. If you saturate the color by 10%, you get **23.8502, 2.8371, 6.1310**, and if you desaturate by 10%, it is **26.7965, 0.1517, 3.6203**.

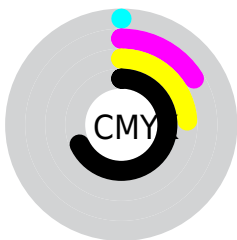
Distribution



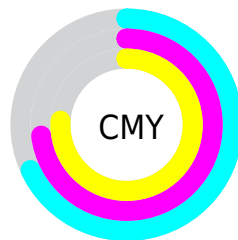
- Red (32%)
- Green (27%)
- Blue (24%)



- Red (32%)
- Yellow (29%)
- Blue (24%)



- Cyan (0%)
- Magenta (16%)
- Yellow (24%)
- Black (68%)



- Cyan (68%)
- Magenta (73%)
- Yellow (76%)

Brightness & Saturation Gradients

These gradients show how the HunterLab color 25.2940, 1.4457, 4.9286 changes by changing the brightness by 10 percent. The first figure shows a shift by +10% for each color and the second figure -10%.

Similar to the brightness gradients but the following saturation gradients show a change of the HunterLab color 25.2940, 1.4457, 4.9286 by changing the saturation by 10% instead.

■ 25.2940, 1.4457,
4.9286

■ 25.2940, 1.4457,
4.9286

■ 127.5009, -2.0826,
13.3603

■ 17.5746, 1.5520,
4.0336

■ 43.3033, 1.0105,
6.7104

■ 10.8545, 1.5630,
3.1519

■ 53.4460, 0.7034,
7.6131

■ 2.0926, 8.7421,
1.4648

■ 64.2762, 0.3450,
8.5291

0.0000, NaN, NaN

0.0000, NaN, NaN

■ 75.7528, -0.0600,
9.4606

0.0000, NaN, NaN

■ 87.8412, -0.5080,
10.4088

0.0000, NaN, NaN

0.0000, NaN, NaN

■ 100.5119, -0.9960,

11.3745

0.0000, NaN, NaN

113.7393, -1.5216,
12.3583

■ 25.2940, 1.4457,
4.9286

■ 25.2940, 1.4457,
4.9286

■ 23.8502, 2.8371,
6.1310

■ 26.7965, 0.1517,
3.6203

■ 22.4696, 4.3341,
7.2096

■ 28.3503, -1.0497,
2.2193

■ 21.1600, 5.9390,
8.1455

■ 29.9514, -2.1667,
0.7377

■ 19.9293, 7.6503,
8.9173

■ 31.5955, -3.2071,
-0.8143

■ 18.7863, 9.4599,
9.5025

■ 33.2789, -4.1781,
-2.4286

■ 17.7403, 11.3495,
9.8800

■ 34.9986, -5.0866,
-4.0983

■ 16.7950, 13.2626,
10.1148

■ 36.7517, -5.9387,
-5.8175

■ 16.3043, 14.2952,
10.2969

■ 38.5358, -6.7400,
-7.5815

■ 40.3489, -7.4957,
-9.3862

Harmonies

Analogous

The Analogous color harmony consists of three colors that are next to each other on the color wheel.



25.2946, 3.1927, 3.3229



25.2940, 1.4457, 4.9286



25.2946, -1.0011, 5.5854

Triad

The Triadic color harmony groups three colors that are evenly spaced from another and form a triangle on the color wheel.



25.2946, 1.4449, 4.9290



25.2946, -6.0393, 1.7065



25.2946, 0.8174, -3.1678

Complementary

The Complementary color scheme is a pair of colors which are on the opposite of each other on the color wheel.



25.2940, 1.4457, 4.9286



25.8172, -3.5192, -2.4855

Split Complementary

Split-complementary colors differ from the complementary color scheme. The scheme consists of three colors, the original color and two neighbors of the complement color.



25.2946, -1.6990, -3.7079



25.2940, 1.4457, 4.9286



25.2946, -5.5950, -0.7373

Square

The Square scheme is like the rectangle color scheme, but the four colors are evenly spaced on the color wheel.



25.2946, 1.4449, 4.9290



25.2946, -5.2686, 3.8448



25.2946, -4.0305, -2.7792



25.2946, 2.8205, -1.3679

Rectangle

The Rectangle color scheme consists of four colors that form a rectangle on the color wheel.



25.2940, 1.4457, 4.9286



25.2946, -2.6750, 5.4489



25.2946, -4.0305, -2.7792



25.2946, 0.0007, -3.5098

Sweetspot

The Sweet Spot groups the original color and five complimentary colors.



25.2946, 1.4449, 4.9290



36.8673, -0.9450, 3.4731



23.9732, 6.2387, -1.5817



18.2842, -0.4555, 1.7405



67.9972, -3.6282, 3.6944



19.0543, -1.0167, 1.0353

Same Dimension

The Same Dimension uses a secret algorithm to generate beautiful new colors.



25.2946, 1.4449, 4.9290



32.3372, 2.9298, 7.4271



27.8094, -2.8037, 7.3703



14.1240, -0.2761, 1.4474



20.6750, 19.2656, 13.0771



48.0463, 50.6126, 30.4920

Inverse Universe

The Inverse Universe completely reimagines the original color for something new.



25.8172, -3.5192, -2.4855



33.1798, -5.0929, -4.5493



23.2680, 0.7067, -5.9909



14.2212, -1.1960, 0.0721



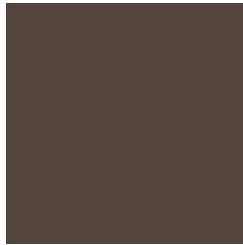
22.6686, -3.5213, -20.7322



52.8221, -5.8991, -53.2884

Previews

White Background



This preview shows how the HunterLab color 25.2940, 1.4457, 4.9286 looks on a white background.

Color Contrast Check

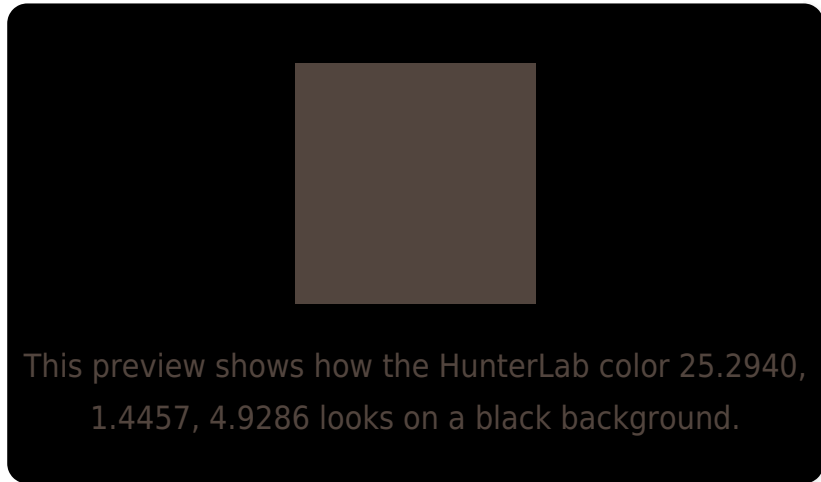
Large Text (above 18pt) WCAG AA ✓ Pass

Any Text WCAG AA ✓ Pass

Large Text (above 18pt) WCAG AAA ✓ Pass

Any Text WCAG AAA ✓ Pass

Black Background



Color Contrast Check

Large Text (above 18pt) WCAG AA × Fail

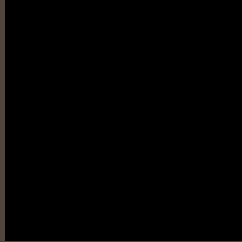
Any Text WCAG AA × Fail

Large Text (above 18pt) WCAG AAA × Fail

Any Text WCAG AAA × Fail

If you want to check with other color combinations, try the [Color Contrast Checker](#).

HunterLab 25.2940, 1.4457, 4.9286 Background



This preview shows how black text looks on a background with the HunterLab color 25.2940, 1.4457, 4.9286.



This preview shows how white text looks on a background with the HunterLab color 25.2940, 1.4457,

4.9286.

Color Blindness Simulation

Color vision deficiency is a very complex topic, and I could not describe the different causes any better than Wikipedia does, so if you want to learn more, you should check out their [article about color blindness](#).

Dichromacy



Original Color

25.2940, 1.4457, 4.9286

Protanopia

25.2214, -1.3050, 4.4637

Deuteranopia

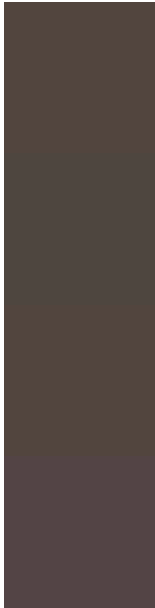
25.2940, 1.4457, 4.9286



Tritanopia

25.1681, 4.0205, 0.7298

Trichromacy



Original Color

25.2940, 1.4457, 4.9286

Protanomaly

25.2169, -0.0352, 4.4811

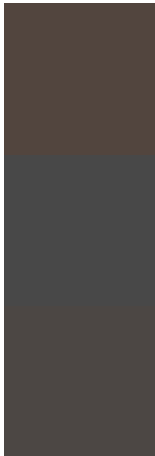
Deuteranomaly

25.2940, 1.4457, 4.9286

Tritanomaly

25.3040, 3.0419, 2.4532

Monochromacy



Original Color

25.2940, 1.4457, 4.9286

Achromatopsia

25.4565, -1.3583, 1.3831

Achromatomaly

25.4172, -0.3971, 2.8980

CSS Examples

Text

The CSS property to change the color of the text to HunterLab 25.2940, 1.4457, 4.9286 is called "color". The color property can be set on classes, ids or directly on the HTML element.

This example shows how text in the color `rgb(82, 69, 62)` looks like.

```
.text, #text, p{  
    color:rgb(82, 69, 62)  
}
```

If you want to add a text shadow in that color use the text-shadow property, you can generate a text shadow directly with our [CSS Text Shadow Generator](#).

Here you see how black text with a 4 pixel rgb(82, 69, 62) colored shadow looks like.

```
.shadow{ text-shadow: 4px 4px 2px rgb(82, 69, 62) }
```

Border

The CSS property to change the border of an element to HunterLab 25.2940, 1.4457, 4.9286 is called "border".

The border property can be set on classes, ids or directly on the HTML element.

This example shows the color as border, it can be applied via the CSS property "border" or "border-color".

```
.border, #border, table{ border:4px solid rgb(82, 69, 62) }
```


If only the border color should be changed use the property `border-color`.

```
.border{ border-color:rgb(82, 69, 62) }
```

If you want to add a box shadow in that color use:

Here you see how a box with a 4 pixel `rgb(82, 69, 62)` colored shadow looks like.

```
.boxshadow{ -moz-box-shadow:4px 4px 4px  
4px rgb(82, 69, 62); -webkit-box-  
shadow:4px 4px 4px 4px rgb(82, 69, 62);  
box-shadow:4px 4px 4px 4px rgb(82, 69, 62)  
}
```

Background

The CSS property to change the background color of an element to HunterLab 25.2940, 1.4457, 4.9286 is called "background". The background property can be set on classes, ids or directly on the HTML element.

```
.background, #background, body{  
background: rgb(82, 69, 62) }
```

If only the background color should be changed can be used:

```
.background{ background-color: rgb(82, 69,  
62) }
```

This example shows the color as background, it is applied via the CSS property "background".

To optimize and compress your CSS code, you can use our [online CSS compressor and optimizer](#) based on csstidy. If you want to create a linear or radial gradient as background or border, check our [CSS Gradient Generator](#).

Hey! You found this booklet interesting? Support Converting Colors with the new Membership Option!

The pro membership hides all ads, plus gives you double the colors in the color bucket, and more awesome pro features!

[Learn more, Memberships starting at \\$2.50/m!](#)

**Follow me
on Twitter!**

@ConvertingColor