

Converting Colors

HunterLab(25.3847, 1.6114,
6.3205)

Have a look what the booklet for
HunterLab(25.3847, 1.6114, 6.3205)
contains.

HunterLab(25.3901, 1.6019, 6.3256)	3
<i>Conversions</i>	4
<i>Details</i>	6
<i>Harmonies</i>	12
<i>Previews</i>	24
<i>Color Blindness Simulation</i>	28
<i>CSS Examples</i>	31

Color

**HunterLab(25.3901, 1.6019,
6.3256)**

Conversions

Conversions Part 1

Format	Color
Hex	54453A
RGB	84, 69, 58
RGB Percent	33%, 27%, 23%
CMY	0.6706, 0.7294, 0.7725
CMYK	0.00, 0.18, 0.31, 0.67
HSL	25°, 18%, 28%
HSV	25°, 31%, 33%
XYZ	6.5480, 6.4466, 4.9022
YIQ	72.2310, 12.4710, -0.2410

Conversions

Conversions Part 2

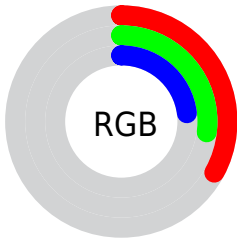
Format	Color
R_{YB}	84, 77, 58
Decimal	5522746
CIE Lab	30.51, 4.49, 9.04
CIE LCh	31, 10.096, 63.616
Yxy	6.4469, 0.3659, 0.3602
Android (android.graphics.Color)	4283712826 (0xFF54453A)
YUV	72.2310, -7.0159, 10.3214
Hunter-Lab	25.3901, 1.6019, 6.3256

Details

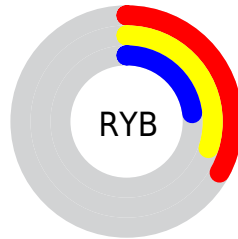
The HunterLab color **25.3901, 1.6019, 6.3256** is a dark color, and the websafe version is hex **333333**. A complement of this color would be **25.1089, -3.2224, -4.3900**, and the grayscale version is **25.5601, -1.3638, 1.3887**.

A 20% lighter version of the original color is **43.3715, 1.2372, 8.4772**, and **10.9008, 1.5930, 4.0786** is the 20% darker color. If you saturate the color by 10%, you get **24.0753, 2.8399, 7.5641**, and if you desaturate by 10%, it is **26.7586, 0.4686, 4.9384**.

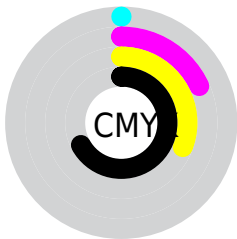
Distribution



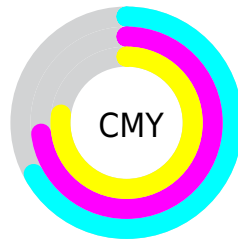
- Red (33%)
- Green (27%)
- Blue (23%)



- Red (33%)
- Yellow (30%)
- Blue (23%)



- Cyan (0%)
- Magenta (18%)
- Yellow (31%)
- Black (67%)



- Cyan (67%)
- Magenta (73%)
- Yellow (77%)

Brightness & Saturation Gradients

These gradients show how the HunterLab color 25.3901, 1.6019, 6.3256 changes by changing the brightness by 10 percent. The first figure shows a shift by +10% for each color and the second figure -10%.

Similar to the brightness gradients but the following saturation gradients show a change of the HunterLab color 25.3901, 1.6019, 6.3256 by changing the saturation by 10% instead.

■ 25.3901, 1.6019,
6.3256

■ 25.3901, 1.6019,
6.3256

■ 127.6656, -1.8265,
16.0897

■ 17.6597, 1.6928,
5.2028

■ 43.4183, 1.1936,
8.4859

■ 10.9270, 1.6866,
4.2038

■ 53.5693, 0.8986,
9.5523

■ 2.3831, 8.0762,
1.6682

■ 64.4073, 0.5516,
10.6200

0.0000, NaN, NaN

0.0000, NaN, NaN

■ 75.8912, 0.1574,
11.6932

0.0000, NaN, NaN

■ 87.9867, -0.2803,
12.7751

0.0000, NaN, NaN

0.0000, NaN, NaN

■ 100.6641, -0.7585,

13.8676

0.0000, NaN, NaN

113.8979, -1.2746,
14.9721

■ 25.3901, 1.6019,
6.3256

■ 25.3901, 1.6019,
6.3256

■ 24.0753, 2.8399,
7.5641

■ 26.7586, 0.4686,
4.9384

■ 22.8174, 4.1906,
8.6344

■ 28.1744, -0.5640,
3.4180

■ 21.6227, 5.6558,
9.5175

■ 29.6341, -1.5039,
1.7793

■ 20.4971, 7.2346,
10.1935

■ 31.1342, -2.3584,
0.0353

■ 19.4470, 8.9201,
10.6447

■ 32.6713, -3.1348,
-1.8030

■ 18.4778, 10.6928,
10.8728

■ 34.2428, -3.8399,
-3.7260

■ 17.6612, 12.2833,
11.0978

■ 35.8461, -4.4798,
-5.7254

■ 37.4789, -5.0605,
-7.7941

■ 39.1395, -5.5872,
-9.9258

Harmonies

Analogous

The Analogous color harmony consists of three colors that are next to each other on the color wheel.



25.3907, 4.2938, 4.5761



25.3901, 1.6019, 6.3256



25.3907, -1.7653, 6.8167

Triad

The Triadic color harmony groups three colors that are evenly spaced from another and form a triangle on the color wheel.



25.3907, 1.6010, 6.3260



25.3907, -7.5300, 0.9885



25.3907, 2.3481, -4.3327

Complementary

The Complementary color scheme is a pair of colors which are on the opposite of each other on the color wheel.



25.3901, 1.6019, 6.3256



25.1089, -3.2224, -4.3900

Split Complementary

Split-complementary colors differ from the complementary color scheme. The scheme consists of three colors, the original color and two neighbors of the complement color.



25.3907, -0.9444, -5.6050



25.3901, 1.6019, 6.3256



25.3907, -6.5515, -2.2896

Square

The Square scheme is like the rectangle color scheme, but the four colors are evenly spaced on the color wheel.



25.3907, 1.6010, 6.3260



25.3907, -6.9270, 3.9821



25.3907, -4.1839, -4.8127



25.3907, 4.7407, -1.5257

Rectangle

The Rectangle color scheme consists of four colors that form a rectangle on the color wheel.



25.3901, 1.6019, 6.3256



25.3907, -3.9110, 6.4252



25.3907, -4.1839, -4.8127



25.3907, 1.3039, -4.9696

Sweetspot

The Sweet Spot groups the original color and five complimentary colors.



25.3907, 1.6010, 6.3260



37.5506, -0.9573, 4.1726



23.2256, 8.3688, -1.7073



18.9151, -0.4221, 2.2143



69.0652, -3.6851, 3.7524



19.9203, -1.0629, 1.0823

Same Dimension

The Same Dimension uses a secret algorithm to generate beautiful new colors.



25.3907, 1.6010, 6.3260



32.2774, 3.3021, 9.5811



28.6354, -3.8298, 9.2895



14.1918, -0.3908, 1.5219



21.8983, 16.1500, 13.7764



50.9267, 42.9498, 32.1327

Inverse Universe

The Inverse Universe completely reimagines the original color for something new.



25.1089, -3.2224, -4.3900



31.8190, -4.4965, -7.7741



21.8837, 2.2415, -9.2007



14.1518, -1.0826, -0.0112



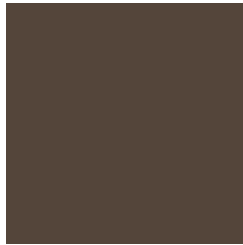
20.6761, -0.2788, -25.2415



47.7915, 2.5614, -65.2645

Previews

White Background



This preview shows how the HunterLab color 25.3901, 1.6019, 6.3256 looks on a white background.

Color Contrast Check

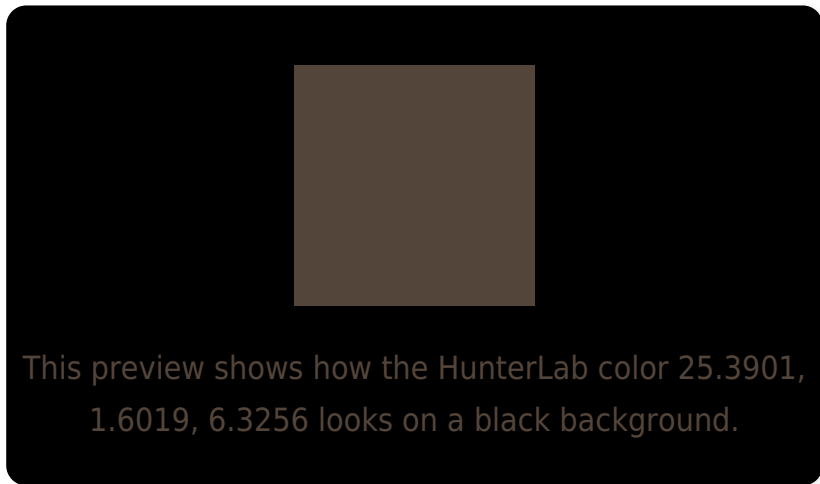
Large Text (above 18pt) WCAG AA ✓ Pass

Any Text WCAG AA ✓ Pass

Large Text (above 18pt) WCAG AAA ✓ Pass

Any Text WCAG AAA ✓ Pass

Black Background



Color Contrast Check

Large Text (above 18pt) WCAG AA × Fail

Any Text WCAG AA × Fail

Large Text (above 18pt) WCAG AAA × Fail

Any Text WCAG AAA × Fail

If you want to check with other color combinations, try the [Color Contrast Checker](#).

HunterLab 25.3901, 1.6019, 6.3256 Background



This preview shows how black text looks on a background with the HunterLab color 25.3901, 1.6019, 6.3256.

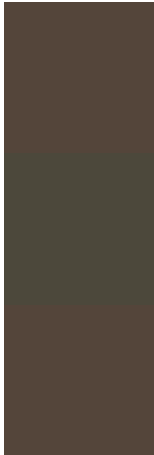


This preview shows how white text looks on a background with the HunterLab color 25.3901, 1.6019,

Color Blindness Simulation

Color vision deficiency is a very complex topic, and I could not describe the different causes any better than Wikipedia does, so if you want to learn more, you should check out their [article about color blindness](#).

Dichromacy



Original Color

25.3901, 1.6019, 6.3256

Protanopia

25.4696, -1.9100, 6.0288

Deuteranopia

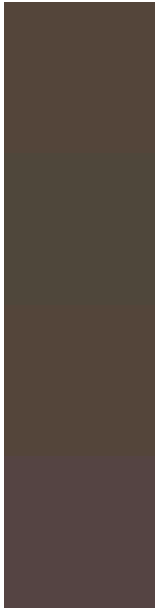
25.3901, 1.6019, 6.3256



Tritanopia

25.4178, 4.7800, 1.4449

Trichromacy



Original Color

25.3901, 1.6019, 6.3256

Protanomaly

25.4647, -0.6327, 6.0463

Deuteranomaly

25.3901, 1.6019, 6.3256

Tritanomaly

25.4377, 3.3868, 3.3570

Monochromacy



Original Color

25.3901, 1.6019, 6.3256

Achromatopsia

25.4565, -1.3583, 1.3831

Achromatomaly

25.3934, -0.5268, 3.2395

CSS Examples

Text

The CSS property to change the color of the text to HunterLab 25.3901, 1.6019, 6.3256 is called "color". The color property can be set on classes, ids or directly on the HTML element.

This example shows how text in the color `rgb(84, 69, 58)` looks like.

```
.text, #text, p{  
    color:rgb(84, 69, 58)  
}
```

If you want to add a text shadow in that color use the text-shadow property, you can generate a text shadow directly with our [CSS Text Shadow Generator](#).

Here you see how black text with a 4 pixel rgb(84, 69, 58) colored shadow looks like.

```
.shadow{ text-shadow: 4px 4px 2px rgb(84, 69, 58) }
```

Border

The CSS property to change the border of an element to HunterLab 25.3901, 1.6019, 6.3256 is called "border". The border property can be set on classes, ids or directly on the HTML element.

This example shows the color as border, it can be applied via the CSS property "border" or "border-color".

```
.border, #border, table{ border:4px solid rgb(84, 69, 58) }
```


If only the border color should be changed use the property `border-color`.

```
.border{ border-color:rgb(84, 69, 58) }
```

If you want to add a box shadow in that color use:

Here you see how a box with a 4 pixel `rgb(84, 69, 58)` colored shadow looks like.

```
.boxshadow{ -moz-box-shadow:4px 4px 4px  
4px rgb(84, 69, 58); -webkit-box-  
shadow:4px 4px 4px 4px rgb(84, 69, 58);  
box-shadow:4px 4px 4px 4px rgb(84, 69, 58)  
}
```

Background

The CSS property to change the background color of an element to HunterLab 25.3901, 1.6019, 6.3256 is called "background". The background property can be set on classes, ids or directly on the HTML element.

```
.background, #background, body{  
background: rgb(84, 69, 58) }
```

If only the background color should be changed can be used:

```
.background{ background-color: rgb(84, 69,  
58) }
```

This example shows the color as background, it is applied via the CSS property "background".

To optimize and compress your CSS code, you can use our [online CSS compressor and optimizer](#) based on csstidy. If you want to create a linear or radial gradient as background or border, check our [CSS Gradient Generator](#).

Hey! You found this booklet interesting? Support Converting Colors with the new Membership Option!

The pro membership hides all ads, plus gives you double the colors in the color bucket, and more awesome pro features!

[Learn more, Memberships starting at \\$2.50/m!](#)

**Follow me
on Twitter!**

@ConvertingColor