

Converting Colors

HunterLab(25.4284, 0.3088,
6.6121)

Have a look what the booklet for
HunterLab(25.4284, 0.3088, 6.6121)
contains.

HunterLab(25.4353, 0.4607, 6.6581)	3
<i>Conversions</i>	4
<i>Details</i>	6
<i>Harmonies</i>	12
<i>Previews</i>	24
<i>Color Blindness Simulation</i>	28
<i>CSS Examples</i>	31

Color

**HunterLab(25.4353, 0.4607,
6.6581)**

Conversions

Conversions Part 1

Format	Color
Hex	524639
RGB	82, 70, 57
RGB Percent	32%, 27%, 22%
CMY	0.6784, 0.7255, 0.7765
CMYK	0.00, 0.15, 0.30, 0.68
HSL	31°, 18%, 27%
HSV	31°, 30%, 32%
XYZ	6.4083, 6.4695, 4.7819
YIQ	72.1060, 11.3250, -1.4990

Conversions

Conversions Part 2

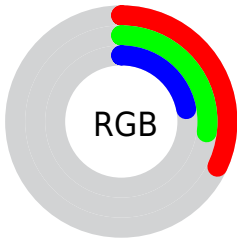
Format	Color
RYB	80, 82, 57
Decimal	5391929
CIELab	30.57, 2.78, 9.73
CIELCh	31, 10.116, 74.046
Yxy	6.4698, 0.3629, 0.3663
Android (android.graphics.Color)	4283582009 (0xFF524639)
YUV	72.1060, -7.4473, 8.6770
Hunter-Lab	25.4353, 0.4607, 6.6581

Details

The HunterLab color **25.4353, 0.4607, 6.6581** is a dark color, and the websafe version is hex **333333**. A complement of this color would be **23.9481, -2.1189, -5.0436**, and the grayscale version is **25.5173, -1.3615, 1.3864**.

A 20% lighter version of the original color is **43.4303, 0.0033, 8.8823**, and **10.9949, 0.7949, 4.5486** is the 20% darker color. If you saturate the color by 10%, you get **24.3272, 1.3198, 7.9853**, and if you desaturate by 10%, it is **26.5839, -0.2970, 5.1539**.

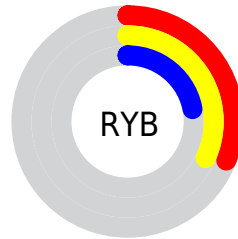
Distribution



Red (32%)

Green (27%)

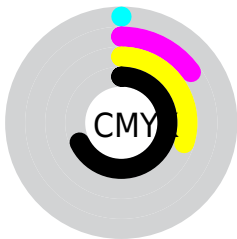
Blue (22%)



Red (31%)

Yellow (32%)

Blue (22%)

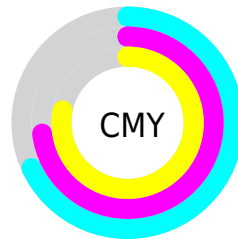


Cyan (0%)

Magenta (15%)

Yellow (30%)

Black (68%)



Cyan (68%)

Magenta (73%)

Yellow (78%)

Brightness & Saturation Gradients

These gradients show how the HunterLab color 25.4353, 0.4607, 6.6581 changes by changing the brightness by 10 percent. The first figure shows a shift by +10% for each color and the second figure -10%.

Similar to the brightness gradients but the following saturation gradients show a change of the HunterLab color 25.4353, 0.4607, 6.6581 by changing the saturation by 10% instead.

■ 25.4353, 0.4607,
6.6581

■ 25.4353, 0.4607,
6.6581

■ 127.7430, -3.7371,
16.7566

■ 17.6998, 0.6721,
5.4778

■ 43.4723, -0.1568,
8.9137

■ 10.9611, 0.8023,
4.4604

■ 53.6272, -0.5452,
10.0213

■ 2.5080, 4.6972,
1.7556

■ 64.4689, -0.9799,
11.1270

0.0000, NaN, NaN

0.0000, NaN, NaN

■ 75.9563, -1.4570,
12.2359

0.0000, NaN, NaN

■ 88.0551, -1.9736,
13.3512

0.0000, NaN, NaN

0.0000, NaN, NaN

■ 100.7356, -2.5272,

14.4754

0.0000, NaN, NaN

113.9724, -3.1156,
15.6101

■ 25.4353, 0.4607,
6.6581

■ 25.4353, 0.4607,
6.6581

■ 24.3272, 1.3198,
7.9853

■ 26.5839, -0.2970,
5.1539

■ 23.2609, 2.2878,
9.1189

■ 27.7686, -0.9564,
3.4865

■ 22.2401, 3.3676,
10.0437

■ 28.9874, -1.5245,
1.6703

■ 21.2680, 4.5606,
10.7454

■ 30.2380, -2.0074,
-0.2818

■ 20.3479, 5.8651,
11.2125

■ 31.5183, -2.4112,
-2.3581

■ 19.4821, 7.2713,
11.4504

■ 32.8263, -2.7417,
-4.5479

■ 18.6975, 8.6238,
11.6723

■ 34.1603, -3.0044,
-6.8418

■ 35.5187, -3.2044,
-9.2313

■ 36.9001, -3.3464,
-11.7089

Harmonies

Analogous

The Analogous color harmony consists of three colors that are next to each other on the color wheel.



25.4359, 3.5032, 5.3327



25.4353, 0.4607, 6.6581



25.4359, -2.9228, 6.6997

Triad

The Triadic color harmony groups three colors that are evenly spaced from another and form a triangle on the color wheel.



25.4359, 0.4598, 6.6584



25.4359, -7.3837, -0.1683



25.4359, 3.3384, -3.4930

Complementary

The Complementary color scheme is a pair of colors which are on the opposite of each other on the color wheel.



25.4353, 0.4607, 6.6581



23.9481, -2.1189, -5.0436

Split Complementary

Split-complementary colors differ from the complementary color scheme. The scheme consists of three colors, the original color and two neighbors of the complement color.



25.4359, 0.2444, -5.4025



25.4353, 0.4607, 6.6581



25.4359, -5.8805, -3.3196

Square

The Square scheme is like the rectangle color scheme, but the four colors are evenly spaced on the color wheel.



25.4359, 0.4598, 6.6584



25.4359, -7.3328, 3.0322



25.4359, -3.1273, -5.3352



25.4359, 5.2237, -0.3813

Rectangle

The Rectangle color scheme consists of four colors that form a rectangle on the color wheel.



25.4353, 0.4607, 6.6581



25.4359, -4.9093, 6.0092



25.4359, -3.1273, -5.3352



25.4359, 2.3983, -4.3139

Sweetspot

The Sweet Spot groups the original color and five complimentary colors.



25.4359, 0.4598, 6.6584



36.8780, -1.3575, 4.3363



22.6955, 7.6271, -0.6257



18.2373, -0.6386, 2.2550



67.9972, -3.6282, 3.6944



19.0543, -1.0167, 1.0353

Same Dimension

The Same Dimension uses a secret algorithm to generate beautiful new colors.



25.4359, 0.4598, 6.6584



32.4590, 1.4847, 10.1910



28.4697, -4.6830, 9.3993



14.2822, -0.5428, 1.6205



23.7683, 11.7985, 14.8525



55.4635, 31.9742, 34.7361

Inverse Universe

The Inverse Universe completely reimagines the original color for something new.



23.9481, -2.1189, -5.0436



30.0133, -2.7228, -9.0866



21.0183, 3.1110, -9.5123



14.0600, -0.9318, -0.1220



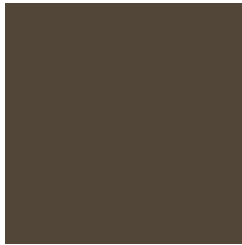
18.1852, 4.2475, -31.8990



41.5670, 14.4192, -83.0821

Previews

White Background



This preview shows how the HunterLab color 25.4353, 0.4607, 6.6581 looks on a white background.

Color Contrast Check

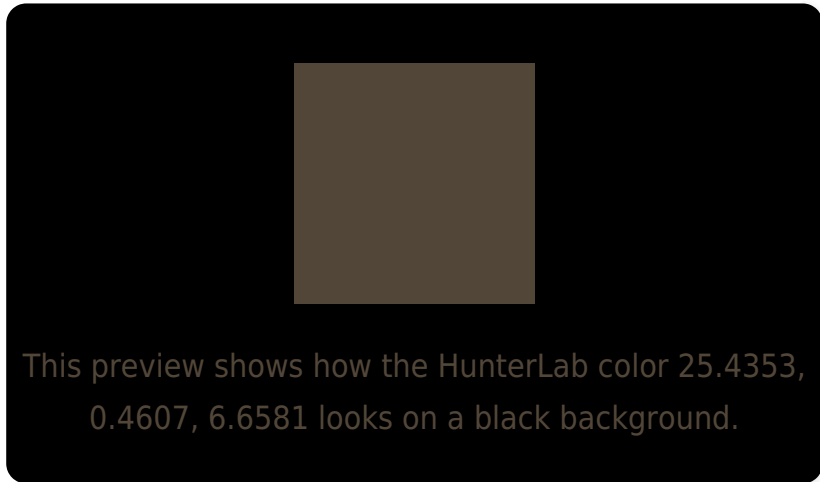
Large Text (above 18pt) WCAG AA ✓ Pass

Any Text WCAG AA ✓ Pass

Large Text (above 18pt) WCAG AAA ✓ Pass

Any Text WCAG AAA ✓ Pass

Black Background



Color Contrast Check

Large Text (above 18pt) WCAG AA × Fail

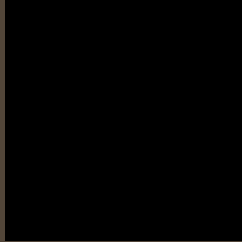
Any Text WCAG AA × Fail

Large Text (above 18pt) WCAG AAA × Fail

Any Text WCAG AAA × Fail

If you want to check with other color combinations, try the [Color Contrast Checker](#).

HunterLab 25.4353, 0.4607, 6.6581 Background



This preview shows how black text looks on a background with the HunterLab color 25.4353, 0.4607, 6.6581.

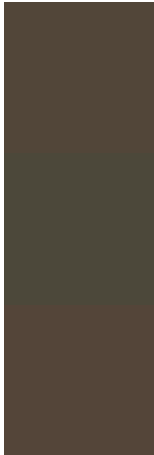


This preview shows how white text looks on a background with the HunterLab color 25.4353, 0.4607,

Color Blindness Simulation

Color vision deficiency is a very complex topic, and I could not describe the different causes any better than Wikipedia does, so if you want to learn more, you should check out their [article about color blindness](#).

Dichromacy



Original Color

25.4353, 0.4607, 6.6581

Protanopia

25.4494, -2.0210, 6.3206

Deuteranopia

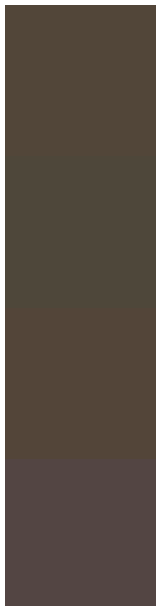
25.3702, 1.4953, 6.6129



Tritanopia

25.4953, 3.8733, 1.1193

Trichromacy



Original Color

25.4353, 0.4607, 6.6581

Protanomaly

25.3607, -1.0326, 6.2506

Deuteranomaly

25.2797, 1.1903, 6.5195

Tritanomaly

25.4961, 2.3488, 3.4031

Monochromacy



Original Color

25.4353, 0.4607, 6.6581

Achromatopsia

25.4565, -1.3583, 1.3831

Achromatomaly

25.3934, -0.5268, 3.2395

CSS Examples

Text

The CSS property to change the color of the text to HunterLab 25.4353, 0.4607, 6.6581 is called "color". The color property can be set on classes, ids or directly on the HTML element.

This example shows how text in the color `rgb(82, 70, 57)` looks like.

```
.text, #text, p{  
    color:rgb(82, 70, 57)  
}
```

If you want to add a text shadow in that color use the text-shadow property, you can generate a text shadow directly with our [CSS Text Shadow Generator](#).

Here you see how black text with a 4 pixel rgb(82, 70, 57) colored shadow looks like.

```
.shadow{ text-shadow: 4px 4px 2px rgb(82, 70, 57) }
```

Border

The CSS property to change the border of an element to HunterLab 25.4353, 0.4607, 6.6581 is called "border". The border property can be set on classes, ids or directly on the HTML element.

This example shows the color as border, it can be applied via the CSS property "border" or "border-color".

```
.border, #border, table{ border:4px solid rgb(82, 70, 57) }
```


If only the border color should be changed use the property `border-color`.

```
.border{ border-color:rgb(82, 70, 57) }
```

If you want to add a box shadow in that color use:

Here you see how a box with a 4 pixel `rgb(82, 70, 57)` colored shadow looks like.

```
.boxshadow{ -moz-box-shadow:4px 4px 4px  
4px rgb(82, 70, 57); -webkit-box-  
shadow:4px 4px 4px 4px rgb(82, 70, 57);  
box-shadow:4px 4px 4px 4px rgb(82, 70, 57)  
}
```

Background

The CSS property to change the background color of an element to HunterLab 25.4353, 0.4607, 6.6581 is called "background". The background property can be set on classes, ids or directly on the HTML element.

```
.background, #background, body{  
background: rgb(82, 70, 57) }
```

If only the background color should be changed can be used:

```
.background{ background-color: rgb(82, 70,  
57) }
```

This example shows the color as background, it is applied via the CSS property "background".

To optimize and compress your CSS code, you can use our [online CSS compressor and optimizer](#) based on csstidy. If you want to create a linear or radial gradient as background or border, check our [CSS Gradient Generator](#).

Hey! You found this booklet interesting? Support Converting Colors with the new Membership Option!

The pro membership hides all ads, plus gives you double the colors in the color bucket, and more awesome pro features!

[Learn more, Memberships starting at \\$2.50/m!](#)

**Follow me
on Twitter!**

@ConvertingColor