

Converting Colors

HunterLab(25.5416, 8.2944,
4.6244)

Have a look what the booklet for
HunterLab(25.5416, 8.2944, 4.6244)
contains.

HunterLab(25.5416, 8.2944, 4.6244)	3
<i>Conversions</i>	4
<i>Details</i>	6
<i>Harmonies</i>	12
<i>Previews</i>	24
<i>Color Blindness Simulation</i>	28
<i>CSS Examples</i>	31

Color

**HunterLab(25.5416, 8.2944,
4.6244)**

Conversions

Conversions Part 1

Format	Color
Hex	604040
RGB	96, 64, 64
RGB Percent	38%, 25%, 25%
CMY	0.6235, 0.7490, 0.7490
CMYK	0.00, 0.33, 0.33, 0.62
HSL	0°, 20%, 31%
HSV	0°, 33%, 38%
XYZ	7.5827, 6.5237, 5.7100
YIQ	73.5680, 19.0720, 6.7840

Conversions

Conversions Part 2

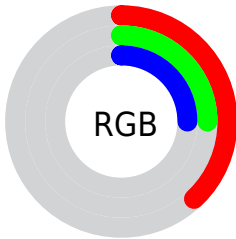
Format	Color
RYB	96, 64, 64
Decimal	6307904
CIELab	30.70, 13.96, 5.65
CIElCh	31, 15.062, 22.039
Yxy	6.5240, 0.3826, 0.3292
Android (android.graphics.Color)	4284497984 (0xFF604040)
YUV	73.5680, -4.7170, 19.6729
Hunter-Lab	25.5416, 8.2944, 4.6244

Details

The HunterLab color $[25.5416, 8.2944, 4.6244]$ is a dark color, and the websafe version is hex 663333 . A complement of this color would be $[32.0934, -9.3971, -0.8329]$, and the grayscale version is $[26.0263, -1.3887, 1.4141]$.

A 20% lighter version of the original color is $[43.6510, 9.2052, 6.2374]$, and $[11.0573, 6.9940, 2.8658]$ is the 20% darker color. If you saturate the color by 10%, you get $[23.3087, 11.5697, 5.5618]$, and if you desaturate by 10%, it is $[27.9650, 5.1172, 3.7351]$.

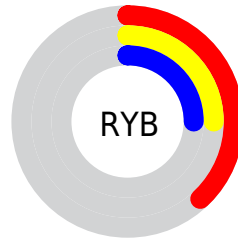
Distribution



Red (38%)

Green (25%)

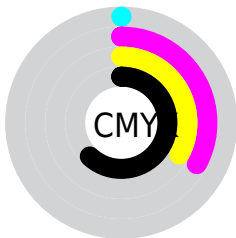
Blue (25%)



Red (38%)

Yellow (25%)

Blue (25%)

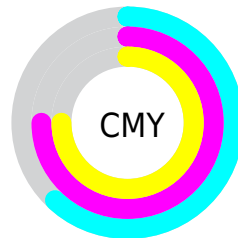


Cyan (0%)

Magenta (33%)

Yellow (33%)

Black (62%)



Cyan (62%)

Magenta (75%)

Yellow (75%)

Brightness & Saturation Gradients

These gradients show how the HunterLab color 25.5416, 8.2944, 4.6244 changes by changing the brightness by 10 percent. The first figure shows a shift by +10% for each color and the second figure -10%.

Similar to the brightness gradients but the following saturation gradients show a change of the HunterLab color 25.5416, 8.2944, 4.6244 by changing the saturation by 10% instead.

■ 25.5416, 8.2944,
4.6244

■ 25.5416, 8.2944,
4.6244

■ 127.9250, 8.9643,
12.7633

■ 17.7940, 7.7699,
3.7802

■ 43.5994, 8.9801,
6.3227

■ 11.0415, 7.0893,
2.9265

■ 53.7635, 9.1800,
7.1893

■ 2.7795, 21.7397,
1.9457

■ 64.6138, 9.3007,
8.0720

0.0000, NaN, NaN

0.0000, NaN, NaN

■ 76.1094, 9.3507,
8.9724

0.0000, NaN, NaN

■ 88.2158, 9.3370,
9.8913

0.0000, NaN, NaN

0.0000, NaN, NaN

■ 100.9038, 9.2651,

114.1476, 9.1396,
11.7865

■ 25.5416, 8.2944,
4.6244

■ 25.5416, 8.2944,
4.6244

■ 23.3087, 11.5697,
5.5618

■ 27.9650, 5.1172,
3.7351

■ 21.2992, 14.8923,
6.5304

■ 30.5480, 2.0617,
2.8974

■ 19.5537, 18.1551,
7.4979

■ 33.2676, -0.8725,
2.1101

■ 18.1136, 21.1863,
8.4097

■ 36.1049, -3.6940,
1.3690

■ 17.0146, 23.7577,
9.1920

■ 39.0446, -6.4155,
0.6689

■ 16.2478, 25.7113,
9.7912

■ 42.0746, -9.0504,
0.0043

■ 15.7700, 27.0044,
10.1902

■ 45.1849, -11.6116,
-0.6298

■ 48.3673, -14.1107,
-1.2379

■ 51.6152, -16.5580,
-1.8240

Harmonies

Analogous

The Analogous color harmony consists of three colors that are next to each other on the color wheel.



25.5422, 9.0021, 0.0751



25.5416, 8.2944, 4.6244



25.5422, 4.8997, 7.6635

Triad

The Triadic color harmony groups three colors that are evenly spaced from another and form a triangle on the color wheel.



25.5422, 8.2933, 4.6248



25.5422, -8.5908, 6.4530



25.5422, -2.6977, -9.5778

Complementary

The Complementary color scheme is a pair of colors which are on the opposite of each other on the color wheel.



25.5416, 8.2944, 4.6244



32.0934, -9.3971, -0.8329

Split Complementary

Split-complementary colors differ from the complementary color scheme. The scheme consists of three colors, the original color and two neighbors of the complement color.



25.5422, -7.0772, -7.0352



25.5416, 8.2944, 4.6244



25.5422, -10.3025, 2.6392

Square

The Square scheme is like the rectangle color scheme, but the four colors are evenly spaced on the color wheel.



25.5422, 8.2933, 4.6248



25.5422, -4.9131, 8.5669



25.5422, -9.7708, -2.3317



25.5422, 2.3897, -8.7614

Rectangle

The Rectangle color scheme consists of four colors that form a rectangle on the color wheel.



25.5416, 8.2944, 4.6244



25.5422, 1.7055, 8.7200



25.5422, -9.7708, -2.3317



25.5422, -4.2955, -9.0727

Sweetspot

The Sweet Spot groups the original color and five complimentary colors.



25.5422, 8.2933, 4.6248



41.5035, 1.5359, 3.5123



26.4540, 12.8721, -8.2762



20.5091, 0.9546, 1.8012



72.2857, -3.8570, 3.9274



22.5557, -1.2035, 1.2255

Same Dimension

The Same Dimension uses a secret algorithm to generate beautiful new colors.



25.5422, 8.2933, 4.6248



31.4521, 14.3870, 7.0944



29.3161, 1.1701, 8.2750



16.0946, 0.3767, 1.2886



18.5958, 31.8436, 12.0161



42.9804, 73.6031, 27.7729

Inverse Universe

The Inverse Universe completely reimagines the original color for something new.



32.0934, -9.3971, -0.8329



41.9854, -14.2742, -1.7538



27.6982, -2.7523, -6.6691



17.0140, -2.0765, 0.5326



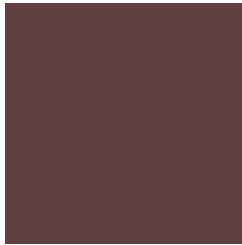
35.7843, -18.9696, -3.7774



82.7089, -43.8445, -8.7313

Previews

White Background



This preview shows how the HunterLab color 25.5416, 8.2944, 4.6244 looks on a white background.

Color Contrast Check

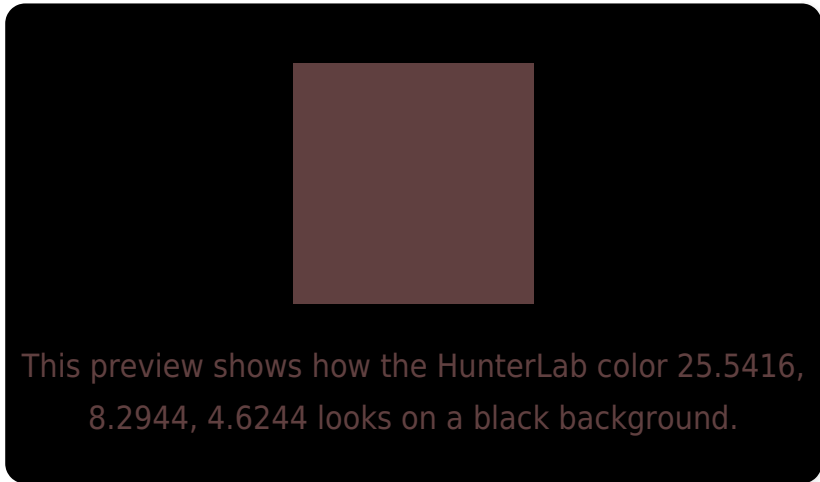
Large Text (above 18pt) WCAG AA ✓ Pass

Any Text WCAG AA ✓ Pass

Large Text (above 18pt) WCAG AAA ✓ Pass

Any Text WCAG AAA ✓ Pass

Black Background



Color Contrast Check

Large Text (above 18pt) WCAG AA × Fail

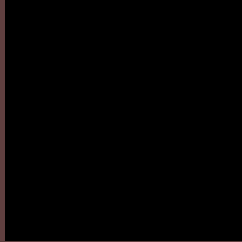
Any Text WCAG AA × Fail

Large Text (above 18pt) WCAG AAA × Fail

Any Text WCAG AAA × Fail

If you want to check with other color combinations, try the [Color Contrast Checker](#).

HunterLab 25.5416, 8.2944, 4.6244 Background



This preview shows how black text looks on a background with the HunterLab color 25.5416, 8.2944, 4.6244.

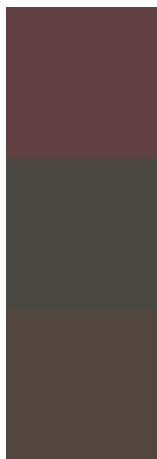


This preview shows how white text looks on a background with the HunterLab color 25.5416, 8.2944,

Color Blindness Simulation

Color vision deficiency is a very complex topic, and I could not describe the different causes any better than Wikipedia does, so if you want to learn more, you should check out their [article about color blindness](#).

Dichromacy



Original Color

25.5416, 8.2944, 4.6244

Protanopia

25.5889, -1.0962, 3.0772

Deuteranopia

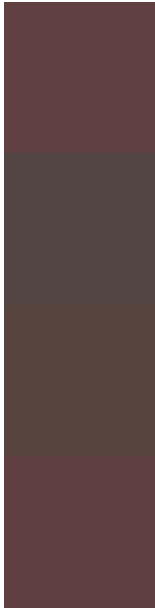
25.6480, 1.4297, 4.9582



Tritanopia

25.4149, 9.2165, 3.0637

Trichromacy



Original Color

25.5416, 8.2944, 4.6244

Protanomaly

25.4961, 2.3488, 3.4031

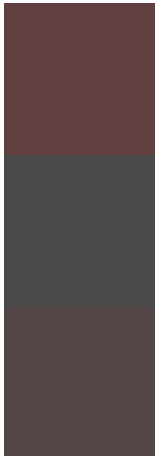
Deuteranomaly

25.6278, 3.8292, 4.9792

Tritanomaly

25.3911, 9.0958, 3.4054

Monochromacy



Original Color

25.5416, 8.2944, 4.6244

Achromatopsia

26.1683, -1.3963, 1.4218

Achromatomaly

25.7223, 2.0035, 2.5290

CSS Examples

Text

The CSS property to change the color of the text to HunterLab 25.5416, 8.2944, 4.6244 is called "color". The color property can be set on classes, ids or directly on the HTML element.

This example shows how text in the color `rgb(96, 64, 64)` looks like.

```
.text, #text, p{  
    color:rgb(96, 64, 64)  
}
```

If you want to add a text shadow in that color use the text-shadow property, you can generate a text shadow directly with our [CSS Text Shadow Generator](#).

Here you see how black text with a 4 pixel rgb(96, 64, 64) colored shadow looks like.

```
.shadow{ text-shadow: 4px 4px 2px rgb(96, 64, 64) }
```

Border

The CSS property to change the border of an element to HunterLab 25.5416, 8.2944, 4.6244 is called "border".

The border property can be set on classes, ids or directly on the HTML element.

This example shows the color as border, it can be applied via the CSS property "border" or "border-color".

```
.border, #border, table{ border:4px solid rgb(96, 64, 64) }
```


If only the border color should be changed use the property `border-color`.

```
.border{ border-color:rgb(96, 64, 64) }
```

If you want to add a box shadow in that color use:

Here you see how a box with a 4 pixel `rgb(96, 64, 64)` colored shadow looks like.

```
.boxshadow{ -moz-box-shadow:4px 4px 4px  
4px rgb(96, 64, 64); -webkit-box-  
shadow:4px 4px 4px 4px rgb(96, 64, 64);  
box-shadow:4px 4px 4px 4px rgb(96, 64, 64)  
}
```

Background

The CSS property to change the background color of an element to HunterLab 25.5416, 8.2944, 4.6244 is called "background". The background property can be set on classes, ids or directly on the HTML element.

```
.background, #background, body{  
background: rgb(96, 64, 64) }
```

If only the background color should be changed can be used:

```
.background{ background-color: rgb(96, 64,  
64) }
```

This example shows the color as background, it is applied via the CSS property "background".

To optimize and compress your CSS code, you can use our [online CSS compressor and optimizer](#) based on csstidy. If you want to create a linear or radial gradient as background or border, check our [CSS Gradient Generator](#).

Hey! You found this booklet interesting? Support Converting Colors with the new Membership Option!

The pro membership hides all ads, plus gives you double the colors in the color bucket, and more awesome pro features!

[Learn more, Memberships starting at \\$2.50/m!](#)

**Follow me
on Twitter!**

@ConvertingColor