

Converting Colors

HunterLab(25.5699, -0.2295,
5.8395)

Have a look what the booklet for
HunterLab(25.5699, -0.2295, 5.8395)
contains.

HunterLab(25.5699, -0.2295, 5.8395)	3
<i>Conversions</i>	4
<i>Details</i>	6
<i>Harmonies</i>	12
<i>Previews</i>	24
<i>Color Blindness Simulation</i>	28
<i>CSS Examples</i>	31

Color

**HunterLab(25.5699, -0.2295,
5.8395)**

Conversions

Conversions Part 1

Format	Color
Hex	50473C
RGB	80, 71, 60
RGB Percent	31%, 28%, 24%
CMY	0.6863, 0.7216, 0.7647
CMYK	0.00, 0.11, 0.25, 0.69
HSL	33°, 14%, 27%
HSV	33°, 25%, 31%
XYZ	6.3771, 6.5382, 5.2009
YIQ	72.4370, 8.8950, -1.5130

Conversions

Conversions Part 2

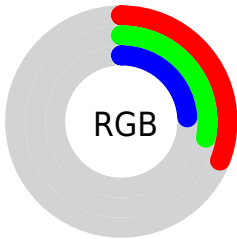
Format	Color
RYB	76, 80, 60
Decimal	5261116
CIELab	30.73, 1.74, 8.01
CIELCh	31, 8.193, 77.723
Yxy	6.5385, 0.3520, 0.3609
Android (android.graphics.Color)	4283451196 (0xFF50473C)
YUV	72.4370, -6.1314, 6.6328
Hunter-Lab	25.5699, -0.2295, 5.8395

Details

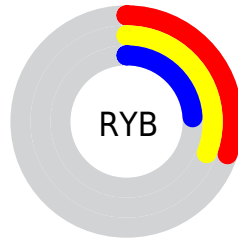
The HunterLab color **25.5699, -0.2295, 5.8395** is a dark color, and the websafe version is hex **333333**. A complement of this color would be **24.0748, -1.8000, -3.8877**, and the grayscale version is **25.6311, -1.3676, 1.3926**.

A 20% lighter version of the original color is **43.4998, -1.0150, 7.8274**, and **11.0973, 0.1643, 3.7835** is the 20% darker color. If you saturate the color by 10%, you get **24.5271, 0.4474, 7.2677**, and if you desaturate by 10%, it is **26.6479, -0.8108, 4.2380**.

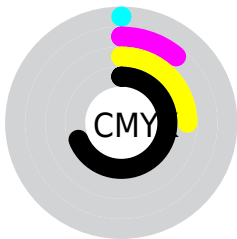
Distribution



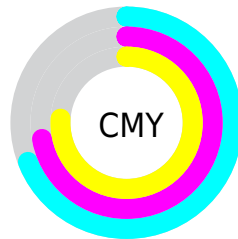
- Red (31%)
- Green (28%)
- Blue (24%)



- Red (30%)
- Yellow (31%)
- Blue (24%)



- Cyan (0%)
- Magenta (11%)
- Yellow (25%)
- Black (69%)



- Cyan (69%)
- Magenta (72%)
- Yellow (76%)

Brightness & Saturation Gradients

These gradients show how the HunterLab color 25.5699, -0.2295, 5.8395 changes by changing the brightness by 10 percent. The first figure shows a shift by +10% for each color and the second figure -10%.

Similar to the brightness gradients but the following saturation gradients show a change of the HunterLab color 25.5699, -0.2295, 5.8395 by changing the saturation by 10% instead.

■ 25.5699, -0.2295,
5.8395

■ 25.5699, -0.2295,
5.8395

■ 127.9734, -4.9040,
15.1003

■ 17.8191, 0.0573,
4.8043

■ 43.6332, -0.9772,
7.8556

■ 11.0629, 0.2734,
3.8105

■ 53.7998, -1.4235,
8.8600

■ 2.8473, 2.5142,
1.9931

■ 64.6524, -1.9125,
9.8704

0.0000, NaN, NaN

0.0000, NaN, NaN

■ 76.1501, -2.4409,
10.8902

0.0000, NaN, NaN

■ 88.2586, -3.0063,
11.9218

0.0000, NaN, NaN

0.0000, NaN, NaN

■ 100.9484, -3.6065,

12.9667

0.0000, NaN, NaN

114.1942, -4.2396,
14.0260

■ 25.5699, -0.2295,
5.8395

■ 25.5699, -0.2295,
5.8395

■ 24.5271, 0.4474,
7.2677

■ 26.6479, -0.8108,
4.2380

■ 23.5202, 1.2273,
8.5076

■ 27.7573, -1.2996,
2.4759

■ 22.5522, 2.1134,
9.5455

■ 28.8965, -1.7022,
0.5663

■ 21.6256, 3.1085,
10.3679

■ 30.0637, -2.0242,
-1.4790

■ 20.7430, 4.2129,
10.9637

■ 31.2572, -2.2713,
-3.6490

■ 19.9068, 5.4244,
11.3254

■ 32.4754, -2.4485,
-5.9338

■ 19.1133, 6.7065,
11.5386

■ 33.7169, -2.5609,
-8.3243

■ 18.7280, 7.3450,
11.6687

■ 34.9802, -2.6131,
-10.8124

■ 36.2642, -2.6093,
-13.3909

Harmonies

Analogous

The Analogous color harmony consists of three colors that are next to each other on the color wheel.



25.5705, 2.2939, 4.8446



25.5699, -0.2295, 5.8395



25.5705, -2.9574, 5.7391

Triad

The Triadic color harmony groups three colors that are evenly spaced from another and form a triangle on the color wheel.



25.5705, -0.2303, 5.8399



25.5705, -6.2155, -0.1891



25.5705, 2.6703, -2.2329

Complementary

The Complementary color scheme is a pair of colors which are on the opposite of each other on the color wheel.



25.5699, -0.2295, 5.8395



24.0748, -1.8000, -3.8877

Split Complementary

Split-complementary colors differ from the complementary color scheme. The scheme consists of three colors, the original color and two neighbors of the complement color.



25.5705, 0.2658, -3.8847



25.5699, -0.2295, 5.8395



25.5705, -4.8304, -2.6216

Square

The Square scheme is like the rectangle color scheme, but the four colors are evenly spaced on the color wheel.



25.5705, -0.2303, 5.8399



25.5705, -6.3357, 2.4397



25.5705, -2.4817, -4.0340



25.5705, 4.0154, 0.2977

Rectangle

The Rectangle color scheme consists of four colors that form a rectangle on the color wheel.



25.5699, -0.2295, 5.8395



25.5705, -4.5248, 5.0634



25.5705, -2.4817, -4.0340



25.5705, 1.9546, -2.9204

Sweetspot

The Sweet Spot groups the original color and five complimentary colors.



25.5705, -0.2303, 5.8399



36.3330, -1.5813, 3.8131



23.1667, 5.6760, -0.0350



18.4887, -0.7992, 1.9658



67.9972, -3.6282, 3.6944



19.0543, -1.0167, 1.0353

Same Dimension

The Same Dimension uses a secret algorithm to generate beautiful new colors.



25.5705, -0.2303, 5.8399



32.9334, 0.2252, 8.8915



27.7955, -4.2746, 7.9336



14.3102, -0.5898, 1.6511



24.3992, 10.4256, 15.2172



57.0183, 28.4723, 35.6328

Inverse Universe

The Inverse Universe completely reimagines the original color for something new.



24.0748, -1.8000, -3.8877



30.4941, -2.3174, -7.0000



21.9160, 2.2761, -6.9877



14.0317, -0.8850, -0.1563



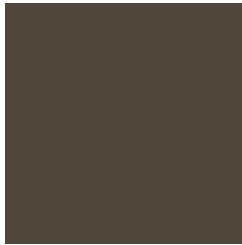
17.4550, 5.7035, -34.1295



39.7628, 18.2379, -89.0704

Previews

White Background



This preview shows how the HunterLab color 25.5699, -0.2295, 5.8395 looks on a white background.

Color Contrast Check

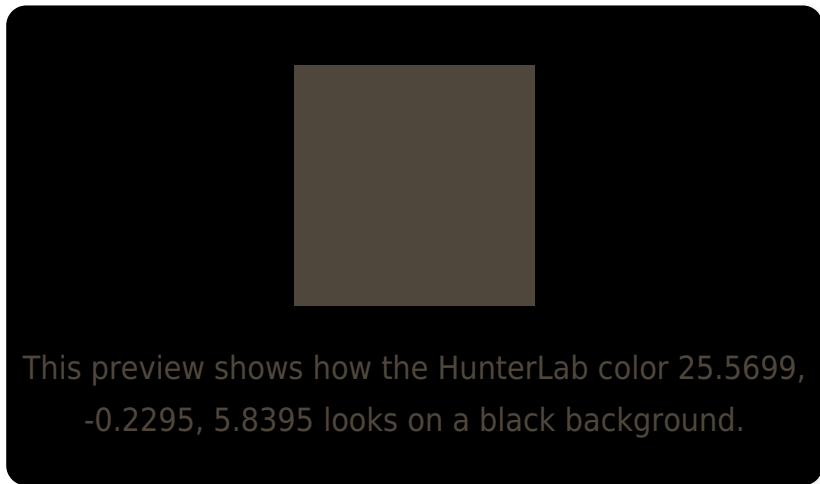
Large Text (above 18pt) WCAG AA ✓ Pass

Any Text WCAG AA ✓ Pass

Large Text (above 18pt) WCAG AAA ✓ Pass

Any Text WCAG AAA ✓ Pass

Black Background



Color Contrast Check

Large Text (above 18pt) WCAG AA × Fail

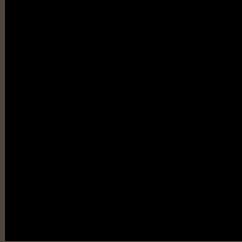
Any Text WCAG AA × Fail

Large Text (above 18pt) WCAG AAA × Fail

Any Text WCAG AAA × Fail

If you want to check with other color combinations, try the [Color Contrast Checker](#).

HunterLab 25.5699, -0.2295, 5.8395 Background



This preview shows how black text looks on a background with the HunterLab color 25.5699, -0.2295, 5.8395.

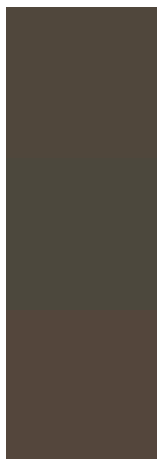


This preview shows how white text looks on a background with the HunterLab color 25.5699, -0.2295,

Color Blindness Simulation

Color vision deficiency is a very complex topic, and I could not describe the different causes any better than Wikipedia does, so if you want to learn more, you should check out their [article about color blindness](#).

Dichromacy



Original Color

25.5699, -0.2295, 5.8395

Protanopia

25.5111, -1.6819, 5.4298

Deuteranopia

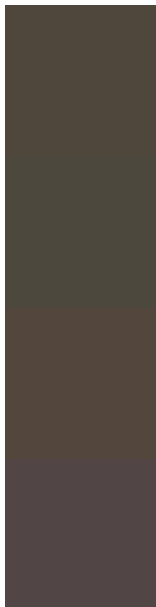
25.6737, 1.3891, 5.9719



Tritanopia

25.5822, 2.9840, 0.8010

Trichromacy



Original Color

25.5699, -0.2295, 5.8395

Protanomaly

25.5919, -1.4004, 5.5169

Deuteranomaly

25.5843, 1.0872, 5.8770

Tritanomaly

25.6112, 1.5819, 2.7752

Monochromacy



Original Color

25.5699, -0.2295, 5.8395

Achromatopsia

25.4565, -1.3583, 1.3831

Achromatomaly

25.5889, -1.0962, 3.0772

CSS Examples

Text

The CSS property to change the color of the text to HunterLab 25.5699, -0.2295, 5.8395 is called "color". The color property can be set on classes, ids or directly on the HTML element.

This example shows how text in the color `rgb(80, 71, 60)` looks like.

```
.text, #text, p{  
    color:rgb(80, 71, 60)  
}
```

If you want to add a text shadow in that color use the text-shadow property, you can generate a text shadow directly with our [CSS Text Shadow Generator](#).

Here you see how black text with a 4 pixel rgb(80, 71, 60) colored shadow looks like.

```
.shadow{ text-shadow: 4px 4px 2px rgb(80, 71, 60) }
```

Border

The CSS property to change the border of an element to HunterLab 25.5699, -0.2295, 5.8395 is called "border". The border property can be set on classes, ids or directly on the HTML element.

This example shows the color as border, it can be applied via the CSS property "border" or "border-color".

```
.border, #border, table{ border:4px solid rgb(80, 71, 60) }
```


If only the border color should be changed use the property border-color.

```
.border{ border-color:rgb(80, 71, 60) }
```

If you want to add a box shadow in that color use:

Here you see how a box with a 4 pixel rgb(80, 71, 60) colored shadow looks like.

```
.boxshadow{ -moz-box-shadow:4px 4px 4px  
4px rgb(80, 71, 60); -webkit-box-  
shadow:4px 4px 4px 4px rgb(80, 71, 60);  
box-shadow:4px 4px 4px 4px rgb(80, 71, 60)  
}
```

Background

The CSS property to change the background color of an element to HunterLab 25.5699, -0.2295, 5.8395 is called "background". The background property can be set on classes, ids or directly on the HTML element.

```
.background, #background, body{  
background: rgb(80, 71, 60) }
```

If only the background color should be changed can be used:

```
.background{ background-color: rgb(80, 71,  
60) }
```

This example shows the color as background, it is applied via the CSS property "background".

To optimize and compress your CSS code, you can use our [online CSS compressor and optimizer](#) based on csstidy. If you want to create a linear or radial gradient as background or border, check our [CSS Gradient Generator](#).

Hey! You found this booklet interesting? Support Converting Colors with the new Membership Option!

The pro membership hides all ads, plus gives you double the colors in the color bucket, and more awesome pro features!

[Learn more, Memberships starting at \\$2.50/m!](#)

**Follow me
on Twitter!**

@ConvertingColor