

Converting Colors

HunterLab(25.6334, 1.4929,
4.8168)

Have a look what the booklet for
HunterLab(25.6334, 1.4929, 4.8168)
contains.

HunterLab(25.6480, 1.4297, 4.9582)	3
<i>Conversions</i>	4
<i>Details</i>	6
<i>Harmonies</i>	12
<i>Previews</i>	24
<i>Color Blindness Simulation</i>	28
<i>CSS Examples</i>	31

Color

**HunterLab(25.6480, 1.4297,
4.9582)**

Conversions

Conversions Part 1

Format	Color
Hex	53463F
RGB	83, 70, 63
RGB Percent	33%, 27%, 25%
CMY	0.6745, 0.7255, 0.7529
CMYK	0.00, 0.16, 0.24, 0.67
HSL	21°, 14%, 29%
HSV	21°, 24%, 33%
XYZ	6.6546, 6.5782, 5.6216
YIQ	73.0890, 9.9950, 0.5790

Conversions

Conversions Part 2

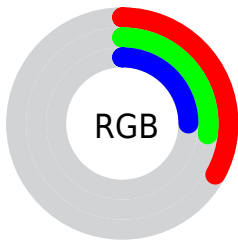
Format	Color
R_{YB}	83, 74, 63
Decimal	5457471
CIE Lab	30.83, 4.24, 6.26
CIE LCh	31, 7.562, 55.919
Yxy	6.5785, 0.3529, 0.3489
Android (android.graphics.Color)	4283647551 (0xFF53463F)
YUV	73.0890, -4.9739, 8.6919
Hunter-Lab	25.6480, 1.4297, 4.9582

Details

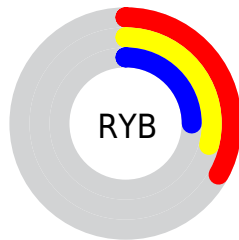
The HunterLab color **25.6480, 1.4297, 4.9582** is a dark color, and the websafe version is hex **333333**. A complement of this color would be **26.1725, -3.5469, -2.4735**, and the grayscale version is **25.8588, -1.3798, 1.4050**.

A 20% lighter version of the original color is **43.6934, 1.2410, 6.5382**, and **11.1807, 1.6133, 3.1555** is the 20% darker color. If you saturate the color by 10%, you get **24.1821, 2.8385, 6.1806**, and if you desaturate by 10%, it is **27.1734, 0.1197, 3.6286**.

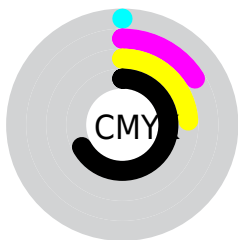
Distribution



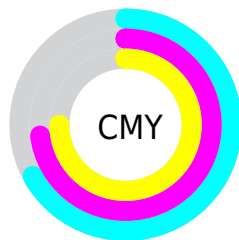
- Red (33%)
- Green (27%)
- Blue (25%)



- Red (33%)
- Yellow (29%)
- Blue (25%)



- Cyan (0%)
- Magenta (16%)
- Yellow (24%)
- Black (67%)



- Cyan (67%)
- Magenta (73%)
- Yellow (75%)

Brightness & Saturation Gradients

These gradients show how the HunterLab color 25.6480, 1.4297, 4.9582 changes by changing the brightness by 10 percent. The first figure shows a shift by +10% for each color and the second figure -10%.

Similar to the brightness gradients but the following saturation gradients show a change of the HunterLab color 25.6480, 1.4297, 4.9582 by changing the saturation by 10% instead.

■ 25.6480, 1.4297,
4.9582

■ 25.6480, 1.4297,
4.9582

■ 128.1070, -2.1235,
13.3873

■ 17.8883, 1.5407,
4.0652

■ 43.7265, 0.9872,
6.7381

■ 11.1220, 1.5575,
3.1623

■ 53.8998, 0.6769,
7.6403

■ 3.0266, 5.9396,
2.1186

■ 64.7587, 0.3157,
8.5560

0.0000, NaN, NaN

0.0000, NaN, NaN

■ 76.2624, -0.0919,
9.4874

0.0000, NaN, NaN

■ 88.3766, -0.5423,
10.4355

0.0000, NaN, NaN

0.0000, NaN, NaN

■ 101.0718, -1.0327,

11.4013

0.0000, NaN, NaN

114.3228, -1.5604,
12.3851

■ 25.6480, 1.4297,
4.9582

■ 25.6480, 1.4297,
4.9582

■ 24.1821, 2.8385,
6.1806

■ 27.1734, 0.1197,
3.6286

■ 22.7802, 4.3545,
7.2776

■ 28.7509, -1.0964,
2.2051

■ 21.4503, 5.9800,
8.2302

■ 30.3762, -2.2270,
0.7002

■ 20.2004, 7.7139,
9.0164

■ 32.0451, -3.2799,
-0.8762

■ 19.0395, 9.5477,
9.6133

■ 33.7539, -4.2627,
-2.5155

■ 17.9769, 11.4633,
9.9996

■ 35.4993, -5.1820,
-4.2109

■ 17.0172, 13.4067,
10.2303

■ 37.2787, -6.0443,
-5.9564

■ 16.4941, 14.5109,
10.4176

■ 39.0895, -6.8553,
-7.7473

■ 40.9296, -7.6200,
-9.5794

Harmonies

Analogous

The Analogous color harmony consists of three colors that are next to each other on the color wheel.



25.6486, 3.1792, 3.3478



25.6480, 1.4297, 4.9582



25.6486, -1.0209, 5.6171

Triad

The Triadic color harmony groups three colors that are evenly spaced from another and form a triangle on the color wheel.



25.6486, 1.4289, 4.9586



25.6486, -6.0686, 1.7250



25.6486, 0.8032, -3.1512

Complementary

The Complementary color scheme is a pair of colors which are on the opposite of each other on the color wheel.



25.6480, 1.4297, 4.9582



26.1725, -3.5469, -2.4735

Split Complementary

Split-complementary colors differ from the complementary color scheme. The scheme consists of three colors, the original color and two neighbors of the complement color.



25.6486, -1.7171, -3.6920



25.6480, 1.4297, 4.9582



25.6486, -5.6225, -0.7221

Square

The Square scheme is like the rectangle color scheme, but the four colors are evenly spaced on the color wheel.



25.6486, 1.4289, 4.9586



25.6486, -5.2966, 3.8689



25.6486, -4.0536, -2.7643



25.6486, 2.8082, -1.3504

Rectangle

The Rectangle color scheme consists of four colors that form a rectangle on the color wheel.



25.6480, 1.4297, 4.9582



25.6486, -2.6977, 5.4796



25.6486, -4.0536, -2.7643



25.6486, -0.0145, -3.4934

Sweetspot

The Sweet Spot groups the original color and five complimentary colors.



25.6486, 1.4289, 4.9586



36.8673, -0.9450, 3.4731



24.3226, 6.2340, -1.5709



18.2842, -0.4555, 1.7405



67.9972, -3.6282, 3.6944



19.0543, -1.0167, 1.0353

Same Dimension

The Same Dimension uses a secret algorithm to generate beautiful new colors.



25.6486, 1.4289, 4.9586



32.3371, 2.9298, 7.4271



28.1696, -2.8291, 7.4104



14.1240, -0.2761, 1.4474



20.6750, 19.2657, 13.0771



48.0462, 50.6129, 30.4919

Inverse Universe

The Inverse Universe completely reimagines the original color for something new.



26.1725, -3.5469, -2.4735



33.1798, -5.0930, -4.5493



23.6174, 0.6884, -5.9795



14.2212, -1.1960, 0.0721



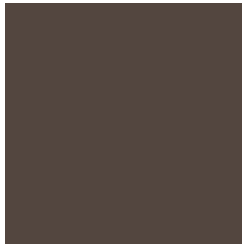
22.6687, -3.5215, -20.7321



52.8223, -5.8995, -53.2879

Previews

White Background



This preview shows how the HunterLab color 25.6480, 1.4297, 4.9582 looks on a white background.

Color Contrast Check

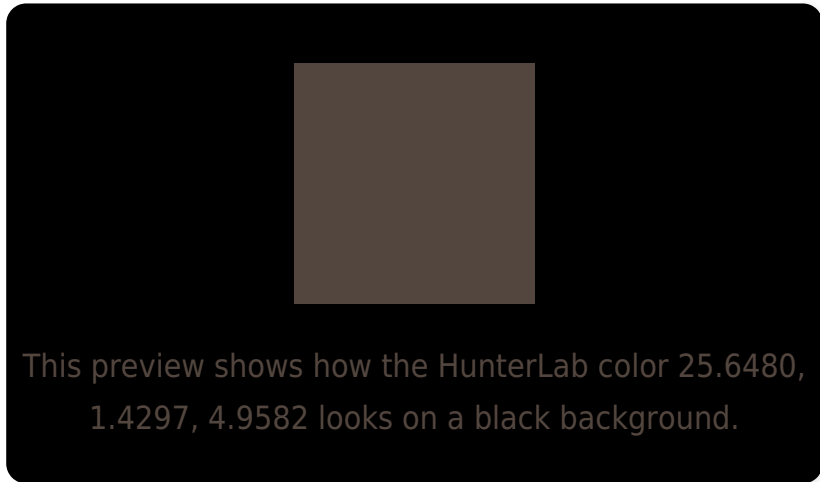
Large Text (above 18pt) WCAG AA ✓ Pass

Any Text WCAG AA ✓ Pass

Large Text (above 18pt) WCAG AAA ✓ Pass

Any Text WCAG AAA ✓ Pass

Black Background



Color Contrast Check

Large Text (above 18pt) WCAG AA × Fail

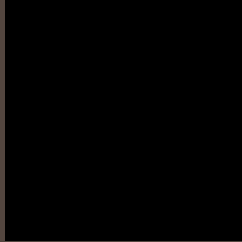
Any Text WCAG AA × Fail

Large Text (above 18pt) WCAG AAA × Fail

Any Text WCAG AAA × Fail

If you want to check with other color combinations, try the [Color Contrast Checker](#).

HunterLab 25.6480, 1.4297, 4.9582 Background



This preview shows how black text looks on a background with the HunterLab color 25.6480, 1.4297, 4.9582.



This preview shows how white text looks on a background with the HunterLab color 25.6480, 1.4297,

4.9582.

Color Blindness Simulation

Color vision deficiency is a very complex topic, and I could not describe the different causes any better than Wikipedia does, so if you want to learn more, you should check out their [article about color blindness](#).

Dichromacy



Original Color

25.6480, 1.4297, 4.9582

Protanopia

25.5762, -1.3251, 4.4924

Deuteranopia

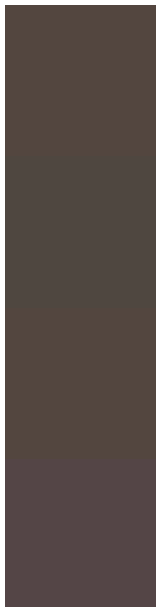
25.6480, 1.4297, 4.9582



Tritanopia

25.5215, 4.0115, 0.7459

Trichromacy



Original Color

25.6480, 1.4297, 4.9582

Protanomaly

25.5713, -0.0530, 4.5096

Deuteranomaly

25.6480, 1.4297, 4.9582

Tritanomaly

25.6579, 3.0304, 2.4738

Monochromacy



Original Color

25.6480, 1.4297, 4.9582

Achromatopsia

25.8120, -1.3773, 1.4024

Achromatomaly

25.7724, -0.4144, 2.9212

CSS Examples

Text

The CSS property to change the color of the text to HunterLab 25.6480, 1.4297, 4.9582 is called "color". The color property can be set on classes, ids or directly on the HTML element.

This example shows how text in the color `rgb(83, 70, 63)` looks like.

```
.text, #text, p{  
    color:rgb(83, 70, 63)  
}
```

If you want to add a text shadow in that color use the text-shadow property, you can generate a text shadow directly with our [CSS Text Shadow Generator](#).

Here you see how black text with a 4 pixel rgb(83, 70, 63) colored shadow looks like.

```
.shadow{ text-shadow: 4px 4px 2px rgb(83, 70, 63) }
```

Border

The CSS property to change the border of an element to HunterLab 25.6480, 1.4297, 4.9582 is called "border". The border property can be set on classes, ids or directly on the HTML element.

This example shows the color as border, it can be applied via the CSS property "border" or "border-color".

```
.border, #border, table{ border:4px solid rgb(83, 70, 63) }
```


If only the border color should be changed use the property border-color.

```
.border{ border-color:rgb(83, 70, 63) }
```

If you want to add a box shadow in that color use:

Here you see how a box with a 4 pixel rgb(83, 70, 63) colored shadow looks like.

```
.boxshadow{ -moz-box-shadow:4px 4px 4px  
4px rgb(83, 70, 63); -webkit-box-  
shadow:4px 4px 4px 4px rgb(83, 70, 63);  
box-shadow:4px 4px 4px 4px rgb(83, 70, 63)  
}
```

Background

The CSS property to change the background color of an element to HunterLab 25.6480, 1.4297, 4.9582 is called "background". The background property can be set on classes, ids or directly on the HTML element.

```
.background, #background, body{  
background: rgb(83, 70, 63) }
```

If only the background color should be changed can be used:

```
.background{ background-color: rgb(83, 70,  
63) }
```

This example shows the color as background, it is applied via the CSS property "background".

To optimize and compress your CSS code, you can use our [online CSS compressor and optimizer](#) based on csstidy. If you want to create a linear or radial gradient as background or border, check our [CSS Gradient Generator](#).

Hey! You found this booklet interesting? Support Converting Colors with the new Membership Option!

The pro membership hides all ads, plus gives you double the colors in the color bucket, and more awesome pro features!

[Learn more, Memberships starting at \\$2.50/m!](#)

**Follow me
on Twitter!**

@ConvertingColor