

# Converting Colors

HunterLab(25.8507, 8.9193,  
1.0951)

Have a look what the booklet for  
HunterLab(25.8507, 8.9193, 1.0951)  
contains.

<b>HunterLab(25.8996, 8.7478, 1.2815)</b> .....	3
<i><b>Conversions</b></i> .....	4
<i><b>Details</b></i> .....	6
<i><b>Harmonies</b></i> .....	12
<i><b>Previews</b></i> .....	24
<i><b>Color Blindness Simulation</b></i> .....	28
<i><b>CSS Examples</b></i> .....	31

# Color

**HunterLab(25.8996, 8.7478,  
1.2815)**

# Conversions

## Conversions Part 1

Format	Color
Hex	5F414A
RGB	95, 65, 74
RGB Percent	37%, 25%, 29%
CMY	0.6275, 0.7451, 0.7098
CMYK	0.00, 0.32, 0.22, 0.63
HSL	342°, 19%, 31%
HSV	342°, 32%, 37%
XYZ	7.8456, 6.7079, 7.3598
YIQ	74.9960, 14.9910, 9.1590

# Conversions

## Conversions Part 2

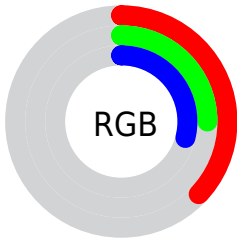
<b>Format</b>	<b>Color</b>
<b>RYB</b>	95, 65, 74
Decimal	6242634
CIELab	31.13, 14.55, -0.21
CIElCh	31, 14.547, 359.186
Yxy	6.7082, 0.3580, 0.3061
Android (android.graphics.Color)	4284432714 (0xFF5F414A)
YUV	74.9960, -0.4910, 17.5435
Hunter-Lab	25.8996, 8.7478, 1.2815

# Details

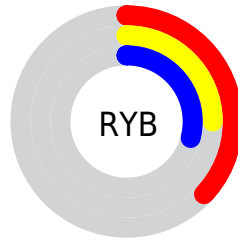
The HunterLab color  $25.8996, 8.7478, 1.2815$  is a dark color, and the websafe version is hex  $663333$ . A complement of this color would be  $31.5916, -10.3536, 2.7612$ , and the grayscale version is  $26.5225, -1.4152, 1.4410$ .

A 20% lighter version of the original color is  $43.9901, 9.5863, 2.0180$ , and  $11.3839, 7.3642, 0.7464$  is the 20% darker color. If you saturate the color by 10%, you get  $23.7123, 12.2002, 1.4094$ , and if you desaturate by 10%, it is  $28.2607, 5.3299, 1.3193$ .

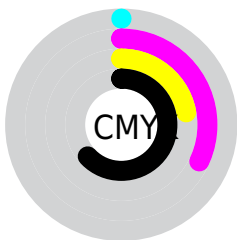
# Distribution



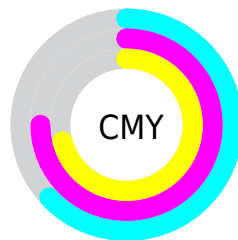
- Red (37%)
- Green (25%)
- Blue (29%)



- Red (37%)
- Yellow (25%)
- Blue (29%)



- Cyan (0%)
- Magenta (32%)
- Yellow (22%)
- Black (63%)



- Cyan (63%)
- Magenta (75%)
- Yellow (71%)

# Brightness & Saturation Gradients

These gradients show how the HunterLab color 25.8996, 8.7478, 1.2815 changes by changing the brightness by 10 percent. The first figure shows a shift by +10% for each color and the second figure -10%.

Similar to the brightness gradients but the following saturation gradients show a change of the HunterLab color 25.8996, 8.7478, 1.2815 by changing the saturation by 10% instead.



■ 25.8996, 8.7478,  
1.2815

■ 25.8996, 8.7478,  
1.2815

■ 128.5366, 9.6332,  
6.7789

■ 18.1116, 8.1944,  
0.8723

■ 44.0270, 9.4883,  
2.2441

■ 11.3126, 7.4844,  
0.5186

■ 54.2219, 9.7139,  
2.7881

■ 3.5419, 17.7058,  
-0.0489

■ 65.1011, 9.8591,  
3.3700

0.0000, NaN, NaN

0.0000, NaN, NaN

■ 76.6239, 9.9328,  
3.9876

0.0000, NaN, NaN

■ 88.7563, 9.9419,  
4.6388

0.0000, NaN, NaN

0.0000, NaN, NaN

■ 101.4689, 9.8921,

114.7364, 9.7879,  
6.0358

■ 25.8996, 8.7478,  
1.2815

■ 25.8996, 8.7478,  
1.2815

■ 23.7123, 12.2002,  
1.4094

■ 28.2607, 5.3299,  
1.3193

■ 21.7274, 15.6294,  
1.7300

■ 30.7685, 1.9790,  
1.4943

■ 19.9802, 18.9283,  
2.2687

■ 33.4027, -1.2958,  
1.7833

■ 18.5077, 21.9349,  
3.0374

■ 36.1465, -4.4946,  
2.1670

■ 17.3433, 24.4397,  
4.0216

■ 38.9863, -7.6234,  
2.6295

■ 16.5006, 26.2553,  
5.1628

■ 41.9110, -10.6900,  
3.1582

■ 15.8718, 27.7242,  
6.0445

■ 44.9115, -13.7029,  
3.7429

■ 47.9803, -16.6705,  
4.3756

■ 51.1112, -19.6004,  
5.0496

# Harmonies

## Analogous

The Analogous color harmony consists of three colors that are next to each other on the color wheel.



25.9002, 7.2322, -3.6244



25.8996, 8.7478, 1.2815



25.9002, 7.3833, 5.4175

# Triad

The Triadic color harmony groups three colors that are evenly spaced from another and form a triangle on the color wheel.



25.9002, 8.7468, 1.2820



25.9002, -5.8276, 8.0878



25.9002, -6.0434, -7.5483

# Complementary

The Complementary color scheme is a pair of colors which are on the opposite of each other on the color wheel.



25.8996, 8.7478, 1.2815



31.5916, -10.3536, 2.7612

# Split Complementary

Split-complementary colors differ from the complementary color scheme. The scheme consists of three colors, the original color and two neighbors of the complement color.



25.9002, -9.1197, -3.3623



25.8996, 8.7478, 1.2815



25.9002, -9.0018, 5.6005

# Square

The Square scheme is like the rectangle color scheme, but the four colors are evenly spaced on the color wheel.



25.9002, 8.7468, 1.2820



25.9002, -1.2492, 8.8770



25.9002, -10.1620, 1.5370



25.9002, -1.5172, -9.2715



# Rectangle

The Rectangle color scheme consists of four colors that form a rectangle on the color wheel.



25.8996, 8.7478, 1.2815



25.9002, 5.0794, 7.3266



25.9002, -10.1620, 1.5370



25.9002, -7.2686, -6.3484

# Sweetspot

The Sweet Spot groups the original color and five complimentary colors.



25.9002, 8.7468, 1.2820



41.0492, 1.5911, 2.0306



25.6624, 9.3025, -9.0376



19.9271, 0.9909, 0.9776



71.2094, -3.7996, 3.8689



21.6712, -1.1563, 1.1774



# Same Dimension

The Same Dimension uses a secret algorithm to generate beautiful new colors.



25.9002, 8.7468, 1.2820



31.7108, 14.8582, 1.7817



27.0579, 4.9421, 5.8003



16.1287, 0.5613, 0.8004



18.8981, 32.9642, 7.5555



43.5194, 75.6003, 19.8109



# Inverse Universe

The Inverse Universe completely reimagines the original color for something new.



25.9002, 8.7468, 1.2820



31.7108, 14.8582, 1.7817



30.1579, -6.5020, -2.8154



16.1287, 0.5613, 0.8004



18.8981, 32.9642, 7.5555

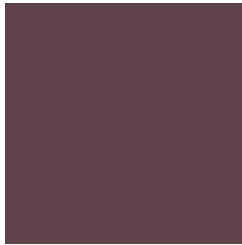


43.5194, 75.6003, 19.8109



# Previews

## White Background



This preview shows how the HunterLab color 25.8996, 8.7478, 1.2815 looks on a white background.

## Color Contrast Check

Large Text (above 18pt) WCAG AA ✓ Pass

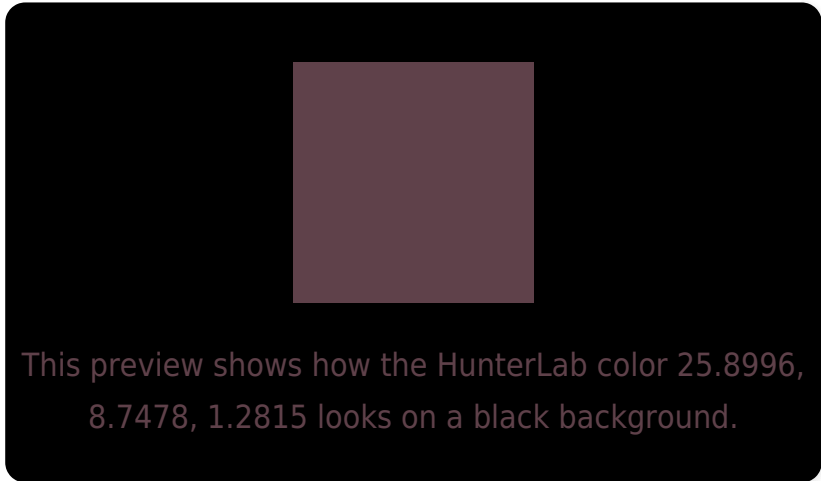
Any Text WCAG AA ✓ Pass

Large Text (above 18pt) WCAG AAA ✓ Pass

Any Text WCAG AAA ✓ Pass



# Black Background



## Color Contrast Check

Large Text (above 18pt) WCAG AA × Fail

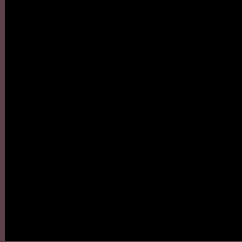
Any Text WCAG AA × Fail

Large Text (above 18pt) WCAG AAA × Fail

Any Text WCAG AAA × Fail

If you want to check with other color combinations, try the [Color Contrast Checker](#).

# HunterLab 25.8996, 8.7478, 1.2815 Background



This preview shows how black text looks on a background with the HunterLab color 25.8996, 8.7478, 1.2815.



This preview shows how white text looks on a background with the HunterLab color 25.8996, 8.7478,



# Color Blindness Simulation

Color vision deficiency is a very complex topic, and I could not describe the different causes any better than Wikipedia does, so if you want to learn more, you should check out their [article about color blindness](#).

## Dichromacy



### Original Color

25.8996, 8.7478, 1.2815

### Protanopia

25.9732, -0.4970, -0.8899

### Deuteranopia

25.9554, 1.6809, 1.6243



## Tritanopia

26.0466, 7.9059, 2.6186

# Trichromacy



## Original Color

25.8996, 8.7478, 1.2815

## Protanomaly

25.8176, 2.6845, -0.1685

## Deuteranomaly

25.9147, 4.0256, 1.6177

## Tritanomaly

26.0714, 8.0331, 2.2633

# Monochromacy



## Original Color

25.8996, 8.7478, 1.2815

## Achromatopsia

26.5255, -1.4153, 1.4412

## Achromatomaly

26.0927, 2.2445, 0.9918

# CSS Examples

## Text

The CSS property to change the color of the text to HunterLab 25.8996, 8.7478, 1.2815 is called "color". The color property can be set on classes, ids or directly on the HTML element.

This example shows how text in the color `rgb(95, 65, 74)` looks like.

```
.text, #text, p{  
    color:rgb(95, 65, 74)  
}
```

If you want to add a text shadow in that color use the text-shadow property, you can generate a text shadow directly with our [CSS Text Shadow Generator](#).

Here you see how black text with a 4 pixel rgb(95, 65, 74) colored shadow looks like.

```
.shadow{ text-shadow: 4px 4px 2px rgb(95, 65, 74) }
```

## Border

The CSS property to change the border of an element to HunterLab 25.8996, 8.7478, 1.2815 is called "border".

The border property can be set on classes, ids or directly on the HTML element.

This example shows the color as border, it can be applied via the CSS property "border" or "border-color".

```
.border, #border, table{ border:4px solid rgb(95, 65, 74) }
```



If only the border color should be changed use the property `border-color`.

```
.border{ border-color:rgb(95, 65, 74) }
```

If you want to add a box shadow in that color use:

Here you see how a box with a 4 pixel `rgb(95, 65, 74)` colored shadow looks like.

```
.boxshadow{ -moz-box-shadow:4px 4px 4px  
4px rgb(95, 65, 74); -webkit-box-  
shadow:4px 4px 4px 4px rgb(95, 65, 74);  
box-shadow:4px 4px 4px 4px rgb(95, 65, 74)  
}
```

# Background

The CSS property to change the background color of an element to HunterLab 25.8996, 8.7478, 1.2815 is called "background". The background property can be set on classes, ids or directly on the HTML element.

```
.background, #background, body{  
background: rgb(95, 65, 74) }
```

If only the background color should be changed can be used:

```
.background{ background-color: rgb(95, 65,  
74) }
```

This example shows the color as background, it is applied via the CSS property "background".

To optimize and compress your CSS code, you can use our [online CSS compressor and optimizer](#) based on csstidy. If you want to create a linear or radial gradient as background or border, check our [CSS Gradient Generator](#).

Hey! You found this booklet interesting? Support Converting Colors with the new Membership Option!

The pro membership hides all ads, plus gives you double the colors in the color bucket, and more awesome pro features!

**[Learn more, Memberships starting at \\$2.50/m!](#)**

**Follow me  
on Twitter!**

@ConvertingColor