

Converting Colors

HunterLab(25.8757, 1.0650,
6.2481)

Have a look what the booklet for
HunterLab(25.8757, 1.0650, 6.2481)
contains.

HunterLab(25.9182, 0.9586, 6.2081)	3
<i>Conversions</i>	4
<i>Details</i>	6
<i>Harmonies</i>	12
<i>Previews</i>	24
<i>Color Blindness Simulation</i>	28
<i>CSS Examples</i>	31

Color

**HunterLab(25.9182, 0.9586,
6.2081)**

Conversions

Conversions Part 1

Format	Color
Hex	54473C
RGB	84, 71, 60
RGB Percent	33%, 28%, 24%
CMY	0.6706, 0.7216, 0.7647
CMYK	0.00, 0.15, 0.29, 0.67
HSL	28°, 17%, 28%
HSV	28°, 29%, 33%
XYZ	6.7250, 6.7175, 5.2171
YIQ	73.6330, 11.2790, -0.6650

Conversions

Conversions Part 2

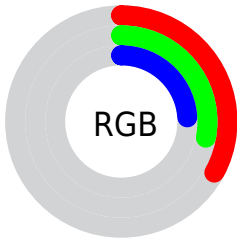
Format	Color
RYB	84, 80, 60
Decimal	5523260
CIELab	31.16, 3.55, 8.66
CIELCh	31, 9.358, 67.731
Yxy	6.7178, 0.3604, 0.3600
Android (android.graphics.Color)	4283713340 (0xFF54473C)
YUV	73.6330, -6.7211, 9.0919
Hunter-Lab	25.9182, 0.9586, 6.2081

Details

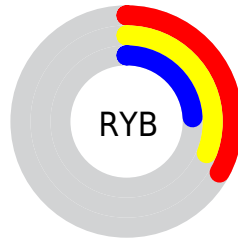
The HunterLab color **25.9182, 0.9586, 6.2081** is a dark color, and the websafe version is hex **333333**. A complement of this color would be **25.2303, -2.7921, -4.2124**, and the grayscale version is **26.0583, -1.3904, 1.4158**.

A 20% lighter version of the original color is **43.9585, 0.5586, 8.3355**, and **11.3413, 0.9874, 4.0140** is the 20% darker color. If you saturate the color by 10%, you get **24.6551, 2.0437, 7.5284**, and if you desaturate by 10%, it is **27.2294, -0.0232, 4.7301**.

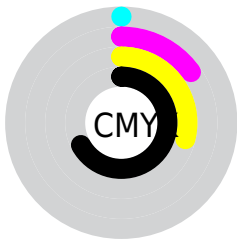
Distribution



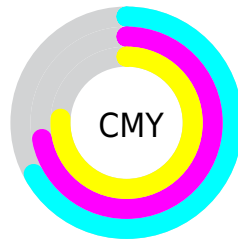
- Red (33%)
- Green (28%)
- Blue (24%)



- Red (33%)
- Yellow (31%)
- Blue (24%)



- Cyan (0%)
- Magenta (15%)
- Yellow (29%)
- Black (67%)



- Cyan (67%)
- Magenta (72%)
- Yellow (76%)

Brightness & Saturation Gradients

These gradients show how the HunterLab color 25.9182, 0.9586, 6.2081 changes by changing the brightness by 10 percent. The first figure shows a shift by +10% for each color and the second figure -10%.

Similar to the brightness gradients but the following saturation gradients show a change of the HunterLab color 25.9182, 0.9586, 6.2081 by changing the saturation by 10% instead.

■ 25.9182, 0.9586,
6.2081

■ 25.9182, 0.9586,
6.2081

■ 128.5683, -2.9180,
15.7874

■ 18.1281, 1.1204,
5.1203

■ 44.0492, 0.4278,
8.3133

■ 11.3267, 1.1951,
4.0592

■ 54.2457, 0.0784,
9.3566

■ 3.5770, 4.1291,
2.5039

■ 65.1264, -0.3197,
10.4033

0.0000, NaN, NaN

0.0000, NaN, NaN

■ 76.6506, -0.7621,
11.4573

0.0000, NaN, NaN

■ 88.7843, -1.2457,
12.5211

0.0000, NaN, NaN

■ 101.4982, -1.7677,

0.0000, NaN, NaN

13.5966

0.0000, NaN, NaN

114.7670, -2.3257,
14.6851

■ 25.9182, 0.9586,
6.2081

■ 25.9182, 0.9586,
6.2081

■ 24.6551, 2.0437,
7.5284

■ 27.2294, -0.0232,
4.7301

■ 23.4424, 3.2404,
8.6725

■ 28.5831, -0.9055,
3.1093

■ 22.2854, 4.5518,
9.6225

■ 29.9766, -1.6964,
1.3604

■ 21.1888, 5.9790,
10.3603

■ 31.4068, -2.4028,
-0.5037

■ 20.1577, 7.5190,
10.8695

■ 32.8710, -3.0314,
-2.4719

■ 19.1974, 9.1624,
11.1383

■ 34.3667, -3.5887,
-4.5342

■ 18.2997, 10.8300,
11.3541

■ 35.8918, -4.0806,
-6.6819

■ 18.1759, 11.0650,
11.3936

■ 37.4444, -4.5127,
-8.9076

■ 39.0226, -4.8899,
-11.2046

Harmonies

Analogous

The Analogous color harmony consists of three colors that are next to each other on the color wheel.



25.9188, 3.5964, 4.7035



25.9182, 0.9586, 6.2081



25.9188, -2.1964, 6.5080

Triad

The Triadic color harmony groups three colors that are evenly spaced from another and form a triangle on the color wheel.



25.9188, 0.9577, 6.2085



25.9188, -7.1326, 0.6214



25.9188, 2.4383, -3.5875

Complementary

The Complementary color scheme is a pair of colors which are on the opposite of each other on the color wheel.



25.9182, 0.9586, 6.2081



25.2303, -2.7921, -4.2124

Split Complementary

Split-complementary colors differ from the complementary color scheme. The scheme consists of three colors, the original color and two neighbors of the complement color.



25.9188, -0.5622, -4.9924



25.9182, 0.9586, 6.2081



25.9188, -6.0153, -2.3799

Square

The Square scheme is like the rectangle color scheme, but the four colors are evenly spaced on the color wheel.



25.9188, 0.9577, 6.2085



25.9188, -6.7691, 3.5062



25.9188, -3.6461, -4.5259



25.9188, 4.4794, -0.8756

Rectangle

The Rectangle color scheme consists of four colors that form a rectangle on the color wheel.



25.9182, 0.9586, 6.2081



25.9188, -4.1506, 6.0217



25.9188, -3.6461, -4.5259



25.9188, 1.5030, -4.2422

Sweetspot

The Sweet Spot groups the original color and five complimentary colors.



25.9188, 0.9577, 6.2085



37.6439, -1.1147, 4.2743



23.6650, 7.4735, -1.1666



18.9671, -0.5100, 2.2707



69.0652, -3.6851, 3.7524



19.9203, -1.0629, 1.0823

Same Dimension

The Same Dimension uses a secret algorithm to generate beautiful new colors.



25.9188, 0.9577, 6.2085



33.1462, 2.1980, 9.3831



28.9259, -4.0309, 8.9907



14.2247, -0.4462, 1.5578



22.5477, 14.5873, 14.1491



52.4875, 39.0357, 33.0259

Inverse Universe

The Inverse Universe completely reimagines the original color for something new.



25.2303, -2.7921, -4.2124



32.0341, -3.8405, -7.4468



22.2705, 2.2503, -8.5676



14.1184, -1.0278, -0.0515



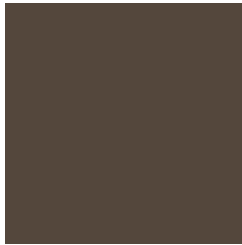
19.7480, 1.3371, -27.5697



45.4622, 6.7897, -71.4807

Previews

White Background



This preview shows how the HunterLab color 25.9182, 0.9586, 6.2081 looks on a white background.

Color Contrast Check

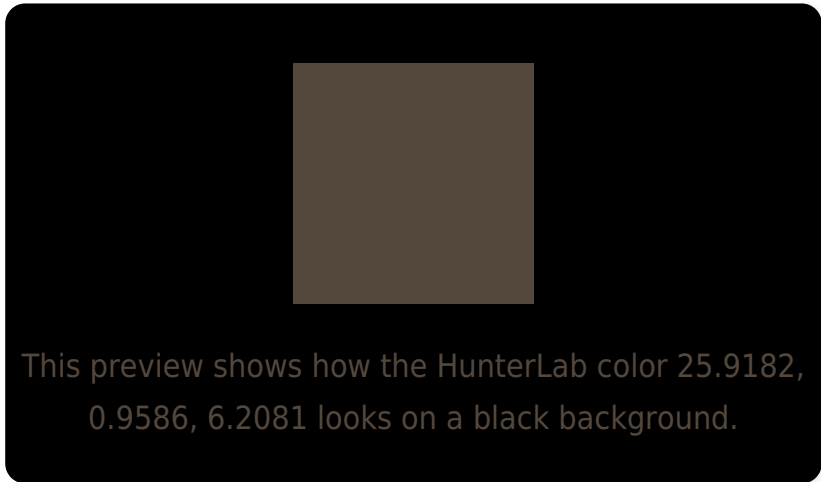
Large Text (above 18pt) WCAG AA ✓ Pass

Any Text WCAG AA ✓ Pass

Large Text (above 18pt) WCAG AAA ✓ Pass

Any Text WCAG AAA ✓ Pass

Black Background



Color Contrast Check

Large Text (above 18pt) WCAG AA × Fail

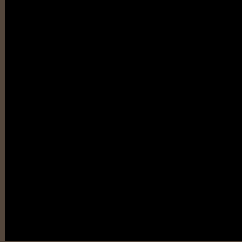
Any Text WCAG AA × Fail

Large Text (above 18pt) WCAG AAA × Fail

Any Text WCAG AAA × Fail

If you want to check with other color combinations, try the [Color Contrast Checker](#).

HunterLab 25.9182, 0.9586, 6.2081 Background



This preview shows how black text looks on a background with the HunterLab color 25.9182, 0.9586, 6.2081.

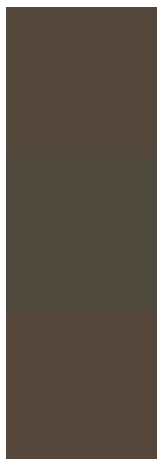


This preview shows how white text looks on a background with the HunterLab color 25.9182, 0.9586,

Color Blindness Simulation

Color vision deficiency is a very complex topic, and I could not describe the different causes any better than Wikipedia does, so if you want to learn more, you should check out their [article about color blindness](#).

Dichromacy



Original Color

25.9182, 0.9586, 6.2081

Protanopia

25.9263, -1.5366, 5.8525

Deuteranopia

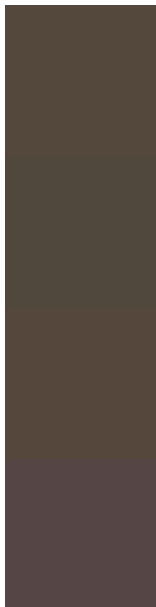
26.0077, 1.2613, 6.3022



Tritanopia

25.9405, 4.1614, 1.2497

Trichromacy



Original Color

25.9182, 0.9586, 6.2081

Protanomaly

25.8401, -0.5406, 5.7832

Deuteranomaly

26.0077, 1.2613, 6.3022

Tritanomaly

25.9640, 2.7606, 3.1903

Monochromacy



Original Color

25.9182, 0.9586, 6.2081

Achromatopsia

26.1683, -1.3963, 1.4218

Achromatomaly

26.1045, -0.5623, 3.2880

CSS Examples

Text

The CSS property to change the color of the text to HunterLab 25.9182, 0.9586, 6.2081 is called "color". The color property can be set on classes, ids or directly on the HTML element.

This example shows how text in the color `rgb(84, 71, 60)` looks like.

```
.text, #text, p{  
    color:rgb(84, 71, 60)  
}
```

If you want to add a text shadow in that color use the text-shadow property, you can generate a text shadow directly with our [CSS Text Shadow Generator](#).

Here you see how black text with a 4 pixel rgb(84, 71, 60) colored shadow looks like.

```
.shadow{ text-shadow: 4px 4px 2px rgb(84, 71, 60) }
```

Border

The CSS property to change the border of an element to HunterLab 25.9182, 0.9586, 6.2081 is called "border".

The border property can be set on classes, ids or directly on the HTML element.

This example shows the color as border, it can be applied via the CSS property "border" or "border-color".

```
.border, #border, table{ border:4px solid rgb(84, 71, 60) }
```


If only the border color should be changed use the property `border-color`.

```
.border{ border-color:rgb(84, 71, 60) }
```

If you want to add a box shadow in that color use:

Here you see how a box with a 4 pixel `rgb(84, 71, 60)` colored shadow looks like.

```
.boxshadow{ -moz-box-shadow:4px 4px 4px  
4px rgb(84, 71, 60); -webkit-box-  
shadow:4px 4px 4px 4px rgb(84, 71, 60);  
box-shadow:4px 4px 4px 4px rgb(84, 71, 60)  
}
```

Background

The CSS property to change the background color of an element to HunterLab 25.9182, 0.9586, 6.2081 is called "background". The background property can be set on classes, ids or directly on the HTML element.

```
.background, #background, body{  
background: rgb(84, 71, 60) }
```

If only the background color should be changed can be used:

```
.background{ background-color: rgb(84, 71,  
60) }
```

This example shows the color as background, it is applied via the CSS property "background".

To optimize and compress your CSS code, you can use our [online CSS compressor and optimizer](#) based on csstidy. If you want to create a linear or radial gradient as background or border, check our [CSS Gradient Generator](#).

Hey! You found this booklet interesting? Support Converting Colors with the new Membership Option!

The pro membership hides all ads, plus gives you double the colors in the color bucket, and more awesome pro features!

[Learn more, Memberships starting at \\$2.50/m!](#)

**Follow me
on Twitter!**

@ConvertingColor