

Converting Colors

HunterLab(25.8926, 1.8087,
5.0572)

Have a look what the booklet for
HunterLab(25.8926, 1.8087, 5.0572)
contains.

HunterLab(25.8273, 2.0317, 5.1547)	3
<i>Conversions</i>	4
<i>Details</i>	6
<i>Harmonies</i>	12
<i>Previews</i>	24
<i>Color Blindness Simulation</i>	28
<i>CSS Examples</i>	31

Color

**HunterLab(25.8273, 2.0317,
5.1547)**

Conversions

Conversions Part 1

Format	Color
Hex	55463F
RGB	85, 70, 63
RGB Percent	33%, 27%, 25%
CMY	0.6667, 0.7255, 0.7529
CMYK	0.00, 0.18, 0.26, 0.67
HSL	19°, 15%, 29%
HSV	19°, 26%, 33%
XYZ	6.8337, 6.6705, 5.6300
YIQ	73.6870, 11.1870, 1.0030

Conversions

Conversions Part 2

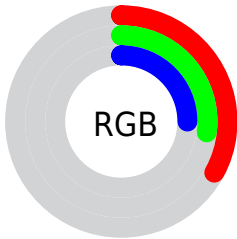
Format	Color
RYB	85, 73, 63
Decimal	5588543
CIELab	31.05, 5.13, 6.60
CIELCh	31, 8.361, 52.155
Yxy	6.6708, 0.3571, 0.3486
Android (android.graphics.Color)	4283778623 (0xFF55463F)
YUV	73.6870, -5.2687, 9.9215
Hunter-Lab	25.8273, 2.0317, 5.1547

Details

The HunterLab color **25.8273, 2.0317, 5.1547** is a dark color, and the websafe version is hex **333333**. A complement of this color would be **26.7604, -4.0481, -2.6227**, and the grayscale version is **26.0726, -1.3912, 1.4166**.

A 20% lighter version of the original color is **43.8810, 1.8771, 6.7523**, and **11.2665, 1.8939, 3.2420** is the 20% darker color. If you saturate the color by 10%, you get **24.2747, 3.6181, 6.3457**, and if you desaturate by 10%, it is **27.4475, 0.5485, 3.8629**.

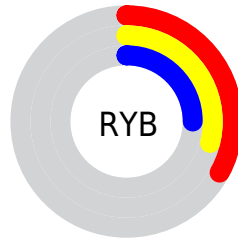
Distribution



Red (33%)

Green (27%)

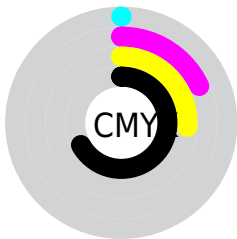
Blue (25%)



Red (33%)

Yellow (29%)

Blue (25%)

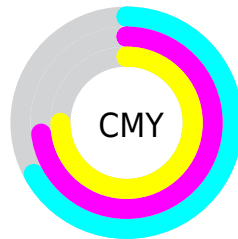


Cyan (0%)

Magenta (18%)

Yellow (26%)

Black (67%)



Cyan (67%)

Magenta (73%)

Yellow (75%)

Brightness & Saturation Gradients

These gradients show how the HunterLab color 25.8273, 2.0317, 5.1547 changes by changing the brightness by 10 percent. The first figure shows a shift by +10% for each color and the second figure -10%.

Similar to the brightness gradients but the following saturation gradients show a change of the HunterLab color 25.8273, 2.0317, 5.1547 by changing the saturation by 10% instead.

■ 25.8273, 2.0317,
5.1547

■ 25.8273, 2.0317,
5.1547

■ 128.4132, -1.1334,
13.7468

■ 18.0474, 2.0828,
4.2348

■ 43.9407, 1.6939,
6.9801

■ 11.2578, 2.0327,
3.2995

■ 54.1294, 1.4307,
7.9023

■ 3.4020, 6.3889,
2.3814

■ 65.0028, 1.1137,
8.8366

0.0000, NaN, NaN

0.0000, NaN, NaN

■ 76.5201, 0.7480,
9.7854

0.0000, NaN, NaN

■ 88.6472, 0.3375,
10.7500

0.0000, NaN, NaN

0.0000, NaN, NaN

■ 101.3549, -0.1146,

11.7315

0.0000, NaN, NaN

114.6176, -0.6057,
12.7303

■ 25.8273, 2.0317,
5.1547

■ 25.8273, 2.0317,
5.1547

■ 24.2747, 3.6181,
6.3457

■ 27.4475, 0.5485,
3.8629

■ 22.7958, 5.3157,
7.4167

■ 29.1268, -0.8362,
2.4840

■ 21.3999, 7.1247,
8.3470

■ 30.8599, -2.1313,
1.0307

■ 20.0971, 9.0401,
9.1126

■ 32.6419, -3.3452,
-0.4870

■ 18.8983, 11.0470,
9.6880

■ 34.4684, -4.4859,
-2.0609

■ 17.8149, 13.1171,
10.0494

■ 36.3356, -5.5609,
-3.6844

■ 16.8505, 15.1694,
10.2950

■ 38.2403, -6.5771,
-5.3522

■ 16.4851, 15.9730,
10.4377

■ 40.1796, -7.5406,
-7.0596

■ 42.1512, -8.4570,
-8.8030

Harmonies

Analogous

The Analogous color harmony consists of three colors that are next to each other on the color wheel.



25.8279, 3.8347, 3.2757



25.8273, 2.0317, 5.1547



25.8279, -0.6355, 6.0099

Triad

The Triadic color harmony groups three colors that are evenly spaced from another and form a triangle on the color wheel.



25.8279, 2.0308, 5.1551



25.8279, -6.5327, 2.0998



25.8279, 0.6965, -3.8400

Complementary

The Complementary color scheme is a pair of colors which are on the opposite of each other on the color wheel.



25.8273, 2.0317, 5.1547



26.7604, -4.0481, -2.6227

Split Complementary

Split-complementary colors differ from the complementary color scheme. The scheme consists of three colors, the original color and two neighbors of the complement color.



25.8279, -2.1152, -4.2413



25.8273, 2.0317, 5.1547



25.8279, -6.2103, -0.6151

Square

The Square scheme is like the rectangle color scheme, but the four colors are evenly spaced on the color wheel.



25.8279, 2.0308, 5.1551



25.8279, -5.5219, 4.3735



25.8279, -4.6216, -3.0062



25.8279, 3.0416, -1.9618

Rectangle

The Rectangle color scheme consists of four colors that form a rectangle on the color wheel.



25.8273, 2.0317, 5.1547



25.8279, -2.5109, 5.9556



25.8279, -4.6216, -3.0062



25.8279, -0.2283, -4.1596

Sweetspot

The Sweet Spot groups the original color and five complimentary colors.



25.8279, 2.0308, 5.1551



37.5021, -0.6722, 3.6815



24.5702, 7.1317, -2.1433



18.8649, -0.2449, 1.9610



69.0652, -3.6851, 3.7524



19.9203, -1.0629, 1.0823

Same Dimension

The Same Dimension uses a secret algorithm to generate beautiful new colors.



25.8279, 2.0308, 5.1551



32.4679, 3.9070, 7.7023



28.5834, -2.6629, 7.8116



14.8731, -0.2293, 1.5039



20.6906, 21.1612, 13.1199



47.5195, 54.4077, 30.2338

Inverse Universe

The Inverse Universe completely reimagines the original color for something new.



26.7604, -4.0481, -2.6227



33.9596, -5.8430, -4.7577



23.9395, 0.5978, -6.5234



15.0414, -1.3221, 0.1031



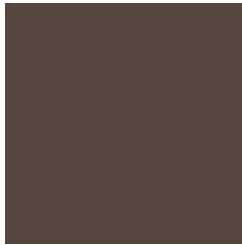
24.1465, -4.9799, -19.4308



55.7620, -9.5624, -49.0553

Previews

White Background



This preview shows how the HunterLab color 25.8273, 2.0317, 5.1547 looks on a white background.

Color Contrast Check

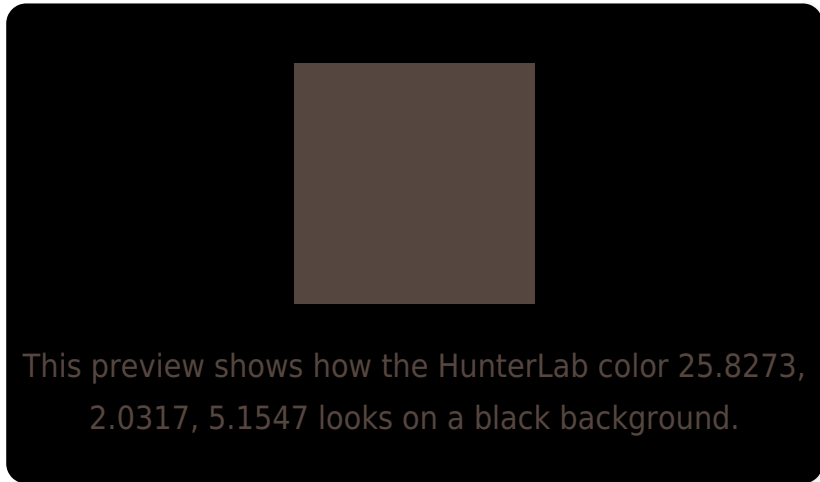
Large Text (above 18pt) WCAG AA ✓ Pass

Any Text WCAG AA ✓ Pass

Large Text (above 18pt) WCAG AAA ✓ Pass

Any Text WCAG AAA ✓ Pass

Black Background



Color Contrast Check

Large Text (above 18pt) WCAG AA × Fail

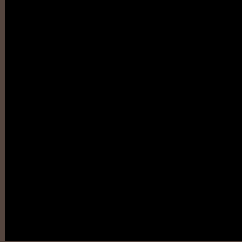
Any Text WCAG AA × Fail

Large Text (above 18pt) WCAG AAA × Fail

Any Text WCAG AAA × Fail

If you want to check with other color combinations, try the [Color Contrast Checker](#).

HunterLab 25.8273, 2.0317, 5.1547 Background



This preview shows how black text looks on a background with the HunterLab color 25.8273, 2.0317, 5.1547.

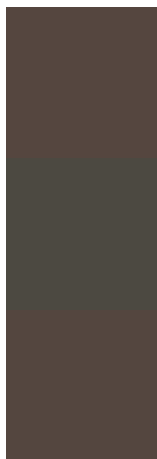


This preview shows how white text looks on a background with the HunterLab color 25.8273, 2.0317,

Color Blindness Simulation

Color vision deficiency is a very complex topic, and I could not describe the different causes any better than Wikipedia does, so if you want to learn more, you should check out their [article about color blindness](#).

Dichromacy



Original Color

25.8273, 2.0317, 5.1547

Protanopia

25.8520, -1.6228, 4.4319

Deuteranopia

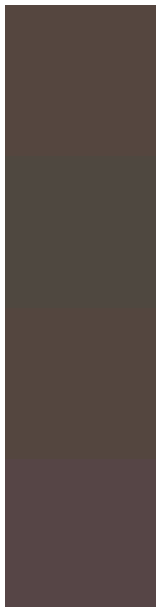
25.7372, 1.7296, 5.0561



Tritanopia

25.7043, 4.6067, 0.9759

Trichromacy



Original Color

25.8273, 2.0317, 5.1547

Protanomaly

25.8208, -0.4784, 4.7646

Deuteranomaly

25.7372, 1.7296, 5.0561

Tritanomaly

25.8396, 3.6295, 2.6905

Monochromacy



Original Color

25.8273, 2.0317, 5.1547

Achromatopsia

26.1683, -1.3963, 1.4218

Achromatomaly

26.1285, -0.4318, 2.9443

CSS Examples

Text

The CSS property to change the color of the text to HunterLab 25.8273, 2.0317, 5.1547 is called "color". The color property can be set on classes, ids or directly on the HTML element.

This example shows how text in the color `rgb(85, 70, 63)` looks like.

```
.text, #text, p{  
    color:rgb(85, 70, 63)  
}
```

If you want to add a text shadow in that color use the text-shadow property, you can generate a text shadow directly with our [CSS Text Shadow Generator](#).

Here you see how black text with a 4 pixel rgb(85, 70, 63) colored shadow looks like.

```
.shadow{ text-shadow: 4px 4px 2px rgb(85, 70, 63) }
```

Border

The CSS property to change the border of an element to HunterLab 25.8273, 2.0317, 5.1547 is called "border". The border property can be set on classes, ids or directly on the HTML element.

This example shows the color as border, it can be applied via the CSS property "border" or "border-color".

```
.border, #border, table{ border:4px solid rgb(85, 70, 63) }
```


If only the border color should be changed use the property `border-color`.

```
.border{ border-color:rgb(85, 70, 63) }
```

If you want to add a box shadow in that color use:

Here you see how a box with a 4 pixel `rgb(85, 70, 63)` colored shadow looks like.

```
.boxshadow{ -moz-box-shadow:4px 4px 4px  
4px rgb(85, 70, 63); -webkit-box-  
shadow:4px 4px 4px 4px rgb(85, 70, 63);  
box-shadow:4px 4px 4px 4px rgb(85, 70, 63)  
}
```

Background

The CSS property to change the background color of an element to HunterLab 25.8273, 2.0317, 5.1547 is called "background". The background property can be set on classes, ids or directly on the HTML element.

```
.background, #background, body{  
background: rgb(85, 70, 63) }
```

If only the background color should be changed can be used:

```
.background{ background-color: rgb(85, 70,  
63) }
```

This example shows the color as background, it is applied via the CSS property "background".

To optimize and compress your CSS code, you can use our [online CSS compressor and optimizer](#) based on csstidy. If you want to create a linear or radial gradient as background or border, check our [CSS Gradient Generator](#).

Hey! You found this booklet interesting? Support Converting Colors with the new Membership Option!

The pro membership hides all ads, plus gives you double the colors in the color bucket, and more awesome pro features!

[Learn more, Memberships starting at \\$2.50/m!](#)

**Follow me
on Twitter!**

@ConvertingColor