

Converting Colors

HunterLab(26.0159, 2.2506,
8.7177)

Have a look what the booklet for
HunterLab(26.0159, 2.2506, 8.7177)
contains.

HunterLab(25.9848, 2.1303, 8.6361)	3
<i>Conversions</i>	4
<i>Details</i>	6
<i>Harmonies</i>	12
<i>Previews</i>	24
<i>Color Blindness Simulation</i>	28
<i>CSS Examples</i>	31

Color

**HunterLab(25.9848, 2.1303,
8.6361)**

Conversions

Conversions Part 1

Format	Color
Hex	594634
RGB	89, 70, 52
RGB Percent	35%, 27%, 20%
CMY	0.6510, 0.7255, 0.7961
CMYK	0.00, 0.21, 0.42, 0.65
HSL	29°, 26%, 28%
HSV	29°, 42%, 35%
XYZ	6.9298, 6.7521, 4.1869
YIQ	73.6290, 17.1020, -1.5700

Conversions

Conversions Part 2

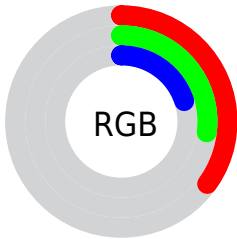
Format	Color
R_{YB}	89, 87, 52
Decimal	5850676
CIE _{Lab}	31.24, 5.28, 13.94
CIE _{LCh}	31, 14.901, 69.262
Yxy	6.7524, 0.3878, 0.3779
Android (android.graphics.Color)	4284040756 (0xFF594634)
YUV	73.6290, -10.6631, 13.4804
Hunter-Lab	25.9848, 2.1303, 8.6361

Details

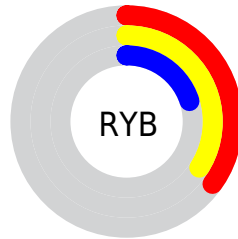
The HunterLab color **25.9848, 2.1303, 8.6361** is a dark color, and the websafe version is hex **333333**. A complement of this color would be **24.4082, -2.6933, -7.9648**, and the grayscale version is **26.0690, -1.3910, 1.4164**.

A 20% lighter version of the original color is **44.0831, 1.9989, 11.3223**, and **11.4577, 2.1731, 6.0581** is the 20% darker color. If you saturate the color by 10%, you get **24.7578, 3.3430, 9.8176**, and if you desaturate by 10%, it is **27.2654, 1.0368, 7.2490**.

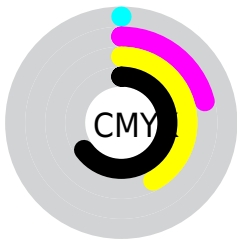
Distribution



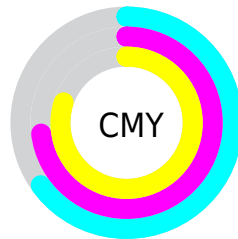
- Red (35%)
- Green (27%)
- Blue (20%)



- Red (35%)
- Yellow (34%)
- Blue (20%)



- Cyan (0%)
- Magenta (21%)
- Yellow (42%)
- Black (65%)



- Cyan (65%)
- Magenta (73%)
- Yellow (80%)

Brightness & Saturation Gradients

These gradients show how the HunterLab color 25.9848, 2.1303, 8.6361 changes by changing the brightness by 10 percent. The first figure shows a shift by +10% for each color and the second figure -10%.

Similar to the brightness gradients but the following saturation gradients show a change of the HunterLab color 25.9848, 2.1303, 8.6361 by changing the saturation by 10% instead.

■ 25.9848, 2.1303,
8.6361

■ 25.9848, 2.1303,
8.6361

■ 128.6819, -0.9784,
20.8352

■ 18.1872, 2.1730,
7.0962

■ 44.1287, 1.8073,
11.4905

■ 11.3773, 2.1138,
5.9831

■ 54.3309, 1.5509,
12.8568

■ 3.6998, 6.0169,
2.5899

■ 65.2169, 1.2404,
14.2019

0.0000, NaN, NaN

0.0000, NaN, NaN

■ 76.7462, 0.8808,
15.5342

0.0000, NaN, NaN

■ 88.8847, 0.4762,
16.8599

0.0000, NaN, NaN

0.0000, NaN, NaN

■ 101.6032, 0.0297,

18.1833

0.0000, NaN, NaN

114.8763, -0.4559,
19.5075

■ 25.9848, 2.1303,
8.6361

■ 25.9848, 2.1303,
8.6361

■ 24.7578, 3.3430,
9.8176

■ 27.2654, 1.0368,
7.2490

■ 23.5868, 4.6815,
10.7736

■ 28.5937, 0.0598,
5.6738

■ 22.4771, 6.1455,
11.4867

■ 29.9667, -0.8083,
3.9284

■ 21.4332, 7.7311,
11.9425

■ 31.3809, -1.5747,
2.0289

■ 20.4588, 9.4232,
12.1474

■ 32.8333, -2.2469,
-0.0101

■ 19.6816, 10.8563,
12.3178

■ 34.3212, -2.8318,
-2.1754

■ 35.8421, -3.3365,
-4.4556

■ 37.3938, -3.7673,
-6.8403

■ 38.9743, -4.1302,
-9.3204

Harmonies

Analogous

The Analogous color harmony consists of three colors that are next to each other on the color wheel.



25.9854, 6.5395, 6.5932



25.9848, 2.1303, 8.6361



25.9854, -2.9275, 8.9601

Triad

The Triadic color harmony groups three colors that are evenly spaced from another and form a triangle on the color wheel.



25.9854, 2.1293, 8.6364



25.9854, -10.2680, -0.1116



25.9854, 5.0262, -6.7727

Complementary

The Complementary color scheme is a pair of colors which are on the opposite of each other on the color wheel.



25.9848, 2.1303, 8.6361



24.4082, -2.6933, -7.9648

Split Complementary

Split-complementary colors differ from the complementary color scheme. The scheme consists of three colors, the original color and two neighbors of the complement color.



25.9854, 0.1884, -9.4135



25.9848, 2.1303, 8.6361



25.9854, -8.4659, -5.1139

Square

The Square scheme is like the rectangle color scheme, but the four colors are evenly spaced on the color wheel.



25.9854, 2.1293, 8.6364



25.9854, -9.8350, 4.4683



25.9854, -4.7274, -8.7546



25.9854, 8.2984, -2.0619

Rectangle

The Rectangle color scheme consists of four colors that form a rectangle on the color wheel.



25.9848, 2.1303, 8.6361



25.9854, -5.9521, 8.2335



25.9854, -4.7274, -8.7546



25.9854, 3.5148, -7.9691

Sweetspot

The Sweet Spot groups the original color and five complimentary colors.



25.9854, 2.1293, 8.6364



39.0190, -0.9700, 5.3259



22.4418, 12.3393, -1.7568



19.5759, -0.4501, 2.7641



70.1359, -3.7423, 3.8106



20.7927, -1.1094, 1.1297

Same Dimension

The Same Dimension uses a secret algorithm to generate beautiful new colors.



25.9854, 2.1293, 8.6364



32.3572, 4.3698, 12.8318



30.6828, -5.6360, 12.5299



15.0408, -0.5126, 1.6875



23.6595, 13.7337, 14.8193



54.4619, 36.3248, 34.1951

Inverse Universe

The Inverse Universe completely reimagines the original color for something new.



24.4082, -2.6933, -7.9648



29.8373, -3.2562, -13.7520



19.9068, 5.2904, -15.7900



14.8701, -1.0419, -0.1028



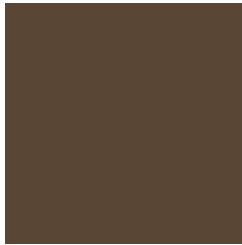
19.4813, 2.7864, -30.3649



44.1795, 10.3987, -77.6682

Previews

White Background



This preview shows how the HunterLab color 25.9848, 2.1303, 8.6361 looks on a white background.

Color Contrast Check

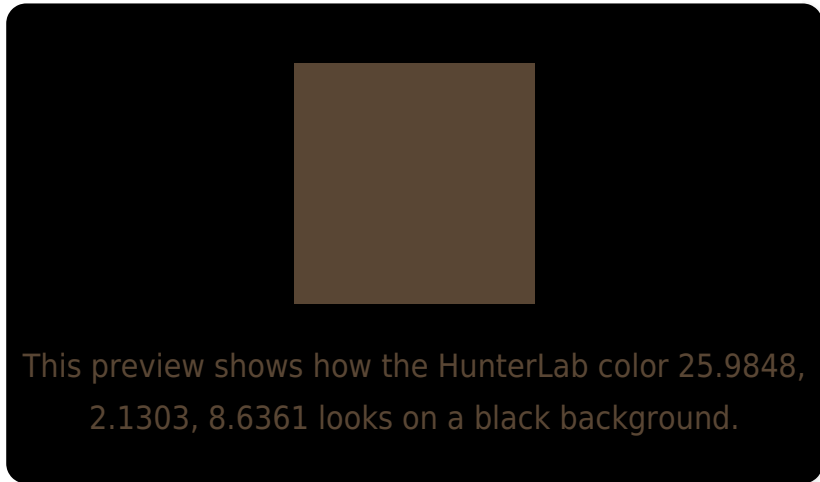
Large Text (above 18pt) WCAG AA ✓ Pass

Any Text WCAG AA ✓ Pass

Large Text (above 18pt) WCAG AAA ✓ Pass

Any Text WCAG AAA ✓ Pass

Black Background



Color Contrast Check

Large Text (above 18pt) WCAG AA × Fail

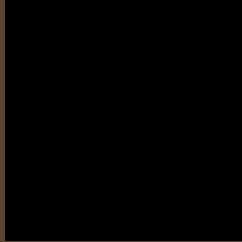
Any Text WCAG AA × Fail

Large Text (above 18pt) WCAG AAA × Fail

Any Text WCAG AAA × Fail

If you want to check with other color combinations, try the [Color Contrast Checker](#).

HunterLab 25.9848, 2.1303, 8.6361 Background



This preview shows how black text looks on a background with the HunterLab color 25.9848, 2.1303, 8.6361.

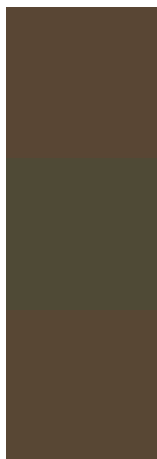


This preview shows how white text looks on a background with the HunterLab color 25.9848, 2.1303,

Color Blindness Simulation

Color vision deficiency is a very complex topic, and I could not describe the different causes any better than Wikipedia does, so if you want to learn more, you should check out their [article about color blindness](#).

Dichromacy



Original Color

25.9848, 2.1303, 8.6361

Protanopia

26.1269, -2.4133, 8.1371

Deuteranopia

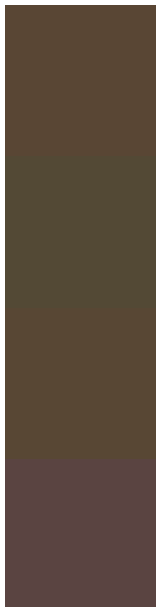
26.1326, 1.3822, 8.7560



Tritanopia

25.8966, 6.3166, 2.0313

Trichromacy



Original Color

25.9848, 2.1303, 8.6361

Protanomaly

26.1938, -0.9143, 8.5006

Deuteranomaly

26.1326, 1.3822, 8.7560

Tritanomaly

25.8642, 4.6883, 4.5553

Monochromacy



Original Color

25.9848, 2.1303, 8.6361

Achromatopsia

26.1683, -1.3963, 1.4218

Achromatomaly

26.1165, -0.6602, 4.3800

CSS Examples

Text

The CSS property to change the color of the text to HunterLab 25.9848, 2.1303, 8.6361 is called "color". The color property can be set on classes, ids or directly on the HTML element.

This example shows how text in the color `rgb(89, 70, 52)` looks like.

```
.text, #text, p{  
    color:rgb(89, 70, 52)  
}
```

If you want to add a text shadow in that color use the text-shadow property, you can generate a text shadow directly with our [CSS Text Shadow Generator](#).

Here you see how black text with a 4 pixel rgb(89, 70, 52) colored shadow looks like.

```
.shadow{ text-shadow: 4px 4px 2px rgb(89, 70, 52) }
```

Border

The CSS property to change the border of an element to HunterLab 25.9848, 2.1303, 8.6361 is called "border". The border property can be set on classes, ids or directly on the HTML element.

This example shows the color as border, it can be applied via the CSS property "border" or "border-color".

```
.border, #border, table{ border:4px solid rgb(89, 70, 52) }
```


If only the border color should be changed use the property `border-color`.

```
.border{ border-color:rgb(89, 70, 52) }
```

If you want to add a box shadow in that color use:

Here you see how a box with a 4 pixel `rgb(89, 70, 52)` colored shadow looks like.

```
.boxshadow{ -moz-box-shadow:4px 4px 4px  
4px rgb(89, 70, 52); -webkit-box-  
shadow:4px 4px 4px 4px rgb(89, 70, 52);  
box-shadow:4px 4px 4px 4px rgb(89, 70, 52)  
}
```

Background

The CSS property to change the background color of an element to HunterLab 25.9848, 2.1303, 8.6361 is called "background". The background property can be set on classes, ids or directly on the HTML element.

```
.background, #background, body{  
background: rgb(89, 70, 52) }
```

If only the background color should be changed can be used:

```
.background{ background-color: rgb(89, 70,  
52) }
```

This example shows the color as background, it is applied via the CSS property "background".

To optimize and compress your CSS code, you can use our [online CSS compressor and optimizer](#) based on csstidy. If you want to create a linear or radial gradient as background or border, check our [CSS Gradient Generator](#).

Hey! You found this booklet interesting? Support Converting Colors with the new Membership Option!

The pro membership hides all ads, plus gives you double the colors in the color bucket, and more awesome pro features!

[Learn more, Memberships starting at \\$2.50/m!](#)

**Follow me
on Twitter!**

@ConvertingColor