

Converting Colors

HunterLab(26.0528, 7.1304,
4.2721)

Have a look what the booklet for
HunterLab(26.0528, 7.1304, 4.2721)
contains.

HunterLab(26.1772, 6.9655, 4.2249)	3
<i>Conversions</i>	4
<i>Details</i>	6
<i>Harmonies</i>	12
<i>Previews</i>	24
<i>Color Blindness Simulation</i>	28
<i>CSS Examples</i>	31

Color

**HunterLab(26.1772, 6.9655,
4.2249)**

Conversions

Conversions Part 1

Format	Color
Hex	5F4343
RGB	95, 67, 67
RGB Percent	37%, 26%, 26%
CMY	0.6275, 0.7372, 0.7373
CMYK	0.00, 0.29, 0.29, 0.63
HSL	0°, 17%, 32%
HSV	0°, 29%, 37%
XYZ	7.7396, 6.8525, 6.2249
YIQ	75.3720, 16.6880, 5.9360

Conversions

Conversions Part 2

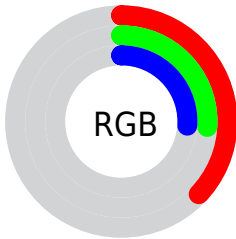
Format	Color
RYB	95, 67, 67
Decimal	6243139
CIELab	31.47, 12.11, 4.80
CIElCh	31, 13.026, 21.605
Yxy	6.8528, 0.3718, 0.3292
Android (android.graphics.Color)	4284433219 (0xFF5F4343)
YUV	75.3720, -4.1274, 17.2138
Hunter-Lab	26.1772, 6.9655, 4.2249

Details

The HunterLab color **26.1772, 6.9655, 4.2249** is a dark color, and the websafe version is hex **663333**. A complement of this color would be **31.9431, -8.5562, -0.5618**, and the grayscale version is **26.6692, -1.4230, 1.4490**.

A 20% lighter version of the original color is **44.2835, 7.4714, 5.7020**, and **11.6086, 5.9854, 2.8444** is the 20% darker color. If you saturate the color by 10%, you get **23.8948, 10.1662, 5.1337**, and if you desaturate by 10%, it is **28.6357, 3.8725, 3.3663**.

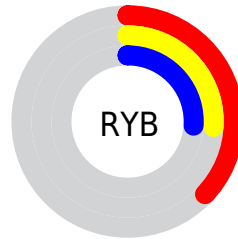
Distribution



Red (37%)

Green (26%)

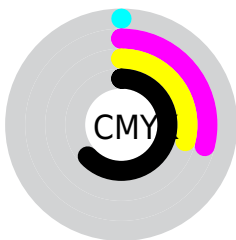
Blue (26%)



Red (37%)

Yellow (26%)

Blue (26%)

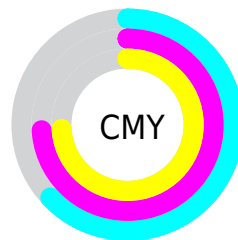


Cyan (0%)

Magenta (29%)

Yellow (29%)

Black (63%)



Cyan (63%)

Magenta (74%)

Yellow (74%)

Brightness & Saturation Gradients

These gradients show how the HunterLab color 26.1772, 6.9655, 4.2249 changes by changing the brightness by 10 percent. The first figure shows a shift by +10% for each color and the second figure -10%.

Similar to the brightness gradients but the following saturation gradients show a change of the HunterLab color 26.1772, 6.9655, 4.2249 by changing the saturation by 10% instead.

■ 26.1772, 6.9655,
4.2249

■ 26.1772, 6.9655,
4.2249

■ 129.0096, 6.8067,
11.9768

■ 18.3581, 6.5649,
3.4478

■ 44.3581, 7.4301,
5.8127

■ 11.5236, 6.0185,
2.6663

■ 54.5768, 7.5299,
6.6317

■ 4.0332, 12.8694,
2.8233

■ 65.4783, 7.5559,
7.4704

0.0000, NaN, NaN

0.0000, NaN, NaN

■ 77.0221, 7.5161,
8.3296

0.0000, NaN, NaN

■ 89.1744, 7.4166,
9.2098

0.0000, NaN, NaN

■ 101.9061, 7.2626,

0.0000, NaN, NaN

10.1111

0.0000, NaN, NaN

115.1919, 7.0581,
11.0335

■ 26.1772, 6.9655,
4.2249

■ 26.1772, 6.9655,
4.2249

■ 23.8948, 10.1662,
5.1337

■ 28.6357, 3.8725,
3.3663

■ 21.8187, 13.4396,
6.0810

■ 31.2419, 0.9014,
2.5585

■ 19.9870, 16.7023,
7.0423

■ 33.9752, -1.9526,
1.7991

■ 18.4407, 19.8111,
7.9725

■ 36.8184, -4.6999,
1.0833

■ 17.2183, 22.5598,
8.8053

■ 39.7578, -7.3537,
0.4058

■ 16.3464, 24.7125,
9.4636

■ 42.7821, -9.9271,
-0.2386

■ 15.6365, 26.6041,
10.0464

■ 45.8824, -12.4323,
-0.8547

■ 15.5983, 26.7100,
10.0792

■ 49.0512, -14.8803,
-1.4467

■ 52.2823, -17.2806,
-2.0182

Harmonies

Analogous

The Analogous color harmony consists of three colors that are next to each other on the color wheel.



26.1778, 7.5331, 0.2193



26.1772, 6.9655, 4.2249



26.1778, 4.0812, 6.9931

Triad

The Triadic color harmony groups three colors that are evenly spaced from another and form a triangle on the color wheel.



26.1778, 6.9644, 4.2253



26.1778, -7.7202, 5.9575



26.1778, -2.6251, -7.8807

Complementary

The Complementary color scheme is a pair of colors which are on the opposite of each other on the color wheel.



26.1772, 6.9655, 4.2249



31.9431, -8.5562, -0.5618

Split Complementary

Split-complementary colors differ from the complementary color scheme. The scheme consists of three colors, the original color and two neighbors of the complement color.



26.1778, -6.4610, -5.7210



26.1772, 6.9655, 4.2249



26.1778, -9.2724, 2.5758

Square

The Square scheme is like the rectangle color scheme, but the four colors are evenly spaced on the color wheel.



26.1778, 6.9644, 4.2253



26.1778, -4.4489, 7.8718



26.1778, -8.8272, -1.7237



26.1778, 1.7989, -7.2423

Rectangle

The Rectangle color scheme consists of four colors that form a rectangle on the color wheel.



26.1772, 6.9655, 4.2249



26.1778, 1.3328, 7.9836



26.1778, -8.8272, -1.7237



26.1778, -4.0216, -7.4466

Sweetspot

The Sweet Spot groups the original color and five complimentary colors.



26.1778, 6.9644, 4.2253



40.9586, 1.1011, 3.3272



26.9694, 10.9948, -6.9902



19.8781, 0.7263, 1.6791



71.2094, -3.7996, 3.8689



21.6712, -1.1563, 1.1774

Same Dimension

The Same Dimension uses a secret algorithm to generate beautiful new colors.



26.1778, 6.9644, 4.2253



32.2693, 11.8510, 6.3034



29.5348, 0.7427, 7.5521



16.0946, 0.3766, 1.2886



18.5959, 31.8435, 12.0162



42.9804, 73.6030, 27.7729

Inverse Universe

The Inverse Universe completely reimagines the original color for something new.



31.9431, -8.5562, -0.5618



41.3741, -12.7929, -1.3013



28.1149, -2.7089, -5.5547



17.0140, -2.0765, 0.5326



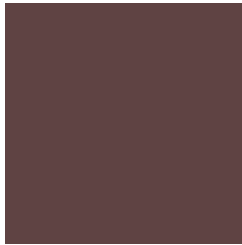
35.7841, -18.9694, -3.7776



82.7084, -43.8440, -8.7318

Previews

White Background



This preview shows how the HunterLab color 26.1772, 6.9655, 4.2249 looks on a white background.

Color Contrast Check

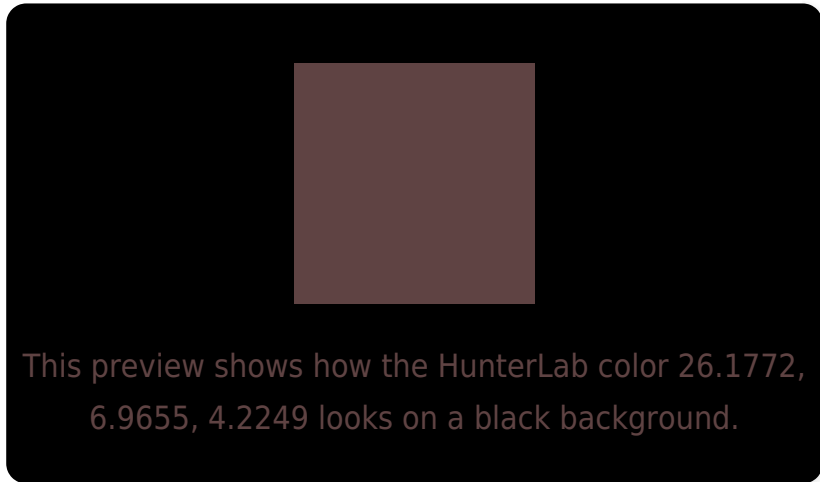
Large Text (above 18pt) WCAG AA ✓ Pass

Any Text WCAG AA ✓ Pass

Large Text (above 18pt) WCAG AAA ✓ Pass

Any Text WCAG AAA ✓ Pass

Black Background



Color Contrast Check

Large Text (above 18pt) WCAG AA × Fail

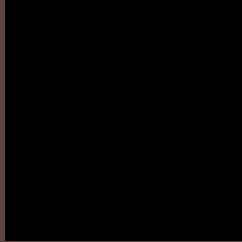
Any Text WCAG AA × Fail

Large Text (above 18pt) WCAG AAA × Fail

Any Text WCAG AAA × Fail

If you want to check with other color combinations, try the [Color Contrast Checker](#).

HunterLab 26.1772, 6.9655, 4.2249 Background



This preview shows how black text looks on a background with the HunterLab color 26.1772, 6.9655, 4.2249.



This preview shows how white text looks on a background with the HunterLab color 26.1772, 6.9655,

Color Blindness Simulation

Color vision deficiency is a very complex topic, and I could not describe the different causes any better than Wikipedia does, so if you want to learn more, you should check out their [article about color blindness](#).

Dichromacy



Original Color

26.1772, 6.9655, 4.2249

Protanopia

26.2469, -1.2739, 2.6849

Deuteranopia

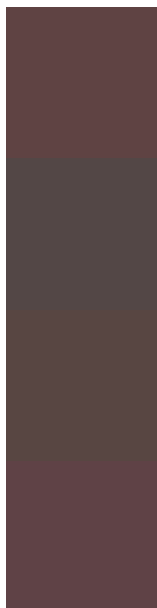
26.2924, 1.2189, 4.5996



Tritanopia

26.0466, 7.9059, 2.6186

Trichromacy



Original Color

26.1772, 6.9655, 4.2249

Protanomaly

26.0532, 1.8597, 2.9000

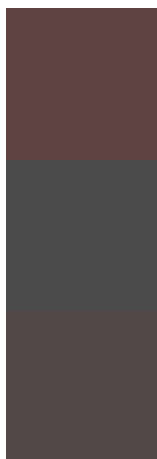
Deuteranomaly

26.1694, 3.3009, 4.5056

Tritanomaly

26.0221, 7.7806, 2.9688

Monochromacy



Original Color

26.1772, 6.9655, 4.2249

Achromatopsia

26.5255, -1.4153, 1.4412

Achromatomaly

26.2611, 1.3969, 2.3646

CSS Examples

Text

The CSS property to change the color of the text to HunterLab 26.1772, 6.9655, 4.2249 is called "color". The color property can be set on classes, ids or directly on the HTML element.

This example shows how text in the color `rgb(95, 67, 67)` looks like.

```
.text, #text, p{  
    color:rgb(95, 67, 67)  
}
```

If you want to add a text shadow in that color use the text-shadow property, you can generate a text shadow directly with our [CSS Text Shadow Generator](#).

Here you see how black text with a 4 pixel rgb(95, 67, 67) colored shadow looks like.

```
.shadow{ text-shadow: 4px 4px 2px rgb(95, 67, 67) }
```

Border

The CSS property to change the border of an element to HunterLab 26.1772, 6.9655, 4.2249 is called "border".

The border property can be set on classes, ids or directly on the HTML element.

This example shows the color as border, it can be applied via the CSS property "border" or "border-color".

```
.border, #border, table{ border:4px solid rgb(95, 67, 67) }
```


If only the border color should be changed use the property border-color.

```
.border{ border-color:rgb(95, 67, 67) }
```

If you want to add a box shadow in that color use:

Here you see how a box with a 4 pixel rgb(95, 67, 67) colored shadow looks like.

```
.boxshadow{ -moz-box-shadow:4px 4px 4px  
4px rgb(95, 67, 67); -webkit-box-  
shadow:4px 4px 4px 4px rgb(95, 67, 67);  
box-shadow:4px 4px 4px 4px rgb(95, 67, 67)  
}
```

Background

The CSS property to change the background color of an element to HunterLab 26.1772, 6.9655, 4.2249 is called "background". The background property can be set on classes, ids or directly on the HTML element.

```
.background, #background, body{  
background: rgb(95, 67, 67) }
```

If only the background color should be changed can be used:

```
.background{ background-color: rgb(95, 67,  
67) }
```

This example shows the color as background, it is applied via the CSS property "background".

To optimize and compress your CSS code, you can use our [online CSS compressor and optimizer](#) based on csstidy. If you want to create a linear or radial gradient as background or border, check our [CSS Gradient Generator](#).

Hey! You found this booklet interesting? Support Converting Colors with the new Membership Option!

The pro membership hides all ads, plus gives you double the colors in the color bucket, and more awesome pro features!

[Learn more, Memberships starting at \\$2.50/m!](#)

**Follow me
on Twitter!**

@ConvertingColor