

Converting Colors

HunterLab(26.0997, 8.3814,
0.2794)

Have a look what the booklet for
HunterLab(26.0997, 8.3814, 0.2794)
contains.

HunterLab(26.0997, 8.3814, 0.2794)	3
<i>Conversions</i>	4
<i>Details</i>	6
<i>Harmonies</i>	12
<i>Previews</i>	24
<i>Color Blindness Simulation</i>	28
<i>CSS Examples</i>	31

Color

**HunterLab(26.0997, 8.3814,
0.2794)**

Conversions

Conversions Part 1

Format	Color
Hex	5E424D
RGB	94, 66, 77
RGB Percent	37%, 26%, 30%
CMY	0.6314, 0.7412, 0.6980
CMYK	0.00, 0.30, 0.18, 0.63
HSL	336°, 17%, 31%
HSV	336°, 30%, 37%
XYZ	7.9039, 6.8119, 7.9194
YIQ	75.6260, 13.1570, 9.3570

Conversions

Conversions Part 2

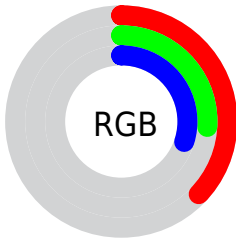
Format	Color
RYB	94, 66, 77
Decimal	6177357
CIELab	31.38, 14.04, -1.80
CIELCh	31, 14.153, 352.680
Yxy	6.8123, 0.3492, 0.3009
Android (android.graphics.Color)	4284367437 (0xFF5E424D)
YUV	75.6260, 0.6774, 16.1140
Hunter-Lab	26.0997, 8.3814, 0.2794

Details

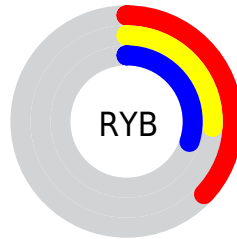
The HunterLab color **26.0997, 8.3814, 0.2794** is a dark color, and the websafe version is hex **663333**. A complement of this color would be **31.2864, -10.1861, 3.5908**, and the grayscale version is **26.7443, -1.4270, 1.4531**.

A 20% lighter version of the original color is **44.2275, 9.2144, 0.9531**, and **11.5193, 7.0085, -0.1850** is the 20% darker color. If you saturate the color by 10%, you get **23.9280, 11.8851, 0.0589**, and if you desaturate by 10%, it is **28.4371, 4.9060, 0.6692**.

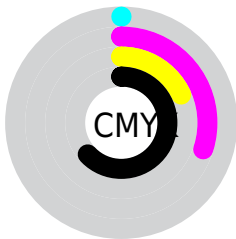
Distribution



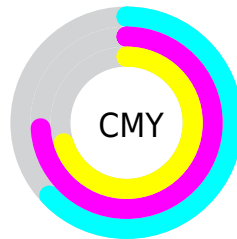
- Red (37%)
- Green (26%)
- Blue (30%)



- Red (37%)
- Yellow (26%)
- Blue (30%)



- Cyan (0%)
- Magenta (30%)
- Yellow (18%)
- Black (63%)



- Cyan (63%)
- Magenta (74%)
- Yellow (70%)

Brightness & Saturation Gradients

These gradients show how the HunterLab color 26.0997, 8.3814, 0.2794 changes by changing the brightness by 10 percent. The first figure shows a shift by +10% for each color and the second figure -10%.

Similar to the brightness gradients but the following saturation gradients show a change of the HunterLab color 26.0997, 8.3814, 0.2794 by changing the saturation by 10% instead.

■ 26.0997, 8.3814,
0.2794

■ 26.0997, 8.3814,
0.2794

■ 128.8776, 9.0391,
5.1003

■ 18.2892, 7.8619,
-0.0237

■ 44.2657, 9.0613,
1.0579

■ 11.4646, 7.1883,
-0.2571

■ 54.4778, 9.2593,
1.5198

■ 3.9024, 15.4665,
-1.7031

■ 65.3730, 9.3786,
2.0247

0.0000, NaN, NaN

0.0000, NaN, NaN

■ 76.9110, 9.4275,
2.5693

0.0000, NaN, NaN

■ 89.0577, 9.4131,
3.1511

0.0000, NaN, NaN

0.0000, NaN, NaN

■ 101.7841, 9.3406,

115.0648, 9.2147,
4.4183

■ 26.0997, 8.3814,
0.2794

■ 26.0997, 8.3814,
0.2794

■ 23.9280, 11.8851,
0.0589

■ 28.4371, 4.9060,
0.6692

■ 21.9486, 15.3623,
0.0429

■ 30.9146, 1.4902,
1.1952

■ 20.1948, 18.7122,
0.2702

■ 33.5135, -1.8564,
1.8325

■ 18.7013, 21.7819,
0.7737

■ 36.2179, -5.1332,
2.5606

■ 17.5008, 24.3712,
1.5666

■ 39.0149, -8.3451,
3.3636

■ 16.6156, 26.2695,
2.6267

■ 41.8939, -11.4991,
4.2292

■ 15.8681, 27.9471,
3.7127

■ 44.8465, -14.6030,
5.1476

■ 15.8518, 27.9864,
3.7344

■ 47.8653, -17.6644,
6.1112

■ 50.9446, -20.6904,
7.1139

Harmonies

Analogous

The Analogous color harmony consists of three colors that are next to each other on the color wheel.



26.1003, 6.3392, -4.4668



26.0997, 8.3814, 0.2794



26.1003, 7.6562, 4.5773

Triad

The Triadic color harmony groups three colors that are evenly spaced from another and form a triangle on the color wheel.



26.1003, 8.3804, 0.2799



26.1003, -4.8502, 8.2790



26.1003, -6.7449, -6.5486

Complementary

The Complementary color scheme is a pair of colors which are on the opposite of each other on the color wheel.



26.0997, 8.3814, 0.2794



31.2864, -10.1861, 3.5908

Split Complementary

Split-complementary colors differ from the complementary color scheme. The scheme consists of three colors, the original color and two neighbors of the complement color.



26.1003, -9.3577, -2.1871



26.0997, 8.3814, 0.2794



26.1003, -8.3201, 6.1925

Square

The Square scheme is like the rectangle color scheme, but the four colors are evenly spaced on the color wheel.



26.1003, 8.3804, 0.2799



26.1003, -0.2105, 8.7005



26.1003, -9.9129, 2.5122



26.1003, -2.5569, -8.8451

Rectangle

The Rectangle color scheme consists of four colors that form a rectangle on the color wheel.



26.0997, 8.3814, 0.2794



26.1003, 5.7255, 6.6881



26.1003, -9.9129, 2.5122



26.1003, -7.8238, -5.2416

Sweetspot

The Sweet Spot groups the original color and five complimentary colors.



26.1003, 8.3804, 0.2799



41.0779, 1.7458, 1.6209



25.5634, 7.7634, -8.6733



19.9427, 1.0747, 0.7554



71.2094, -3.7996, 3.8689



21.6712, -1.1563, 1.1774

Same Dimension

The Same Dimension uses a secret algorithm to generate beautiful new colors.



26.1003, 8.3804, 0.2799



32.4060, 14.4897, 0.1315



26.4670, 5.7182, 4.8618



15.3661, 0.5711, 0.6179



18.6213, 32.8291, 4.7500



43.3860, 76.1278, 13.8652

Inverse Universe

The Inverse Universe completely reimagines the original color for something new.



26.1003, 8.3804, 0.2799



32.4060, 14.4897, 0.1315



30.7945, -7.3701, -1.5425



15.3661, 0.5711, 0.6179



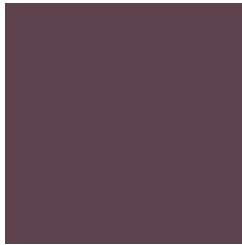
18.6213, 32.8291, 4.7500



43.3860, 76.1278, 13.8652

Previews

White Background



This preview shows how the HunterLab color 26.0997, 8.3814, 0.2794 looks on a white background.

Color Contrast Check

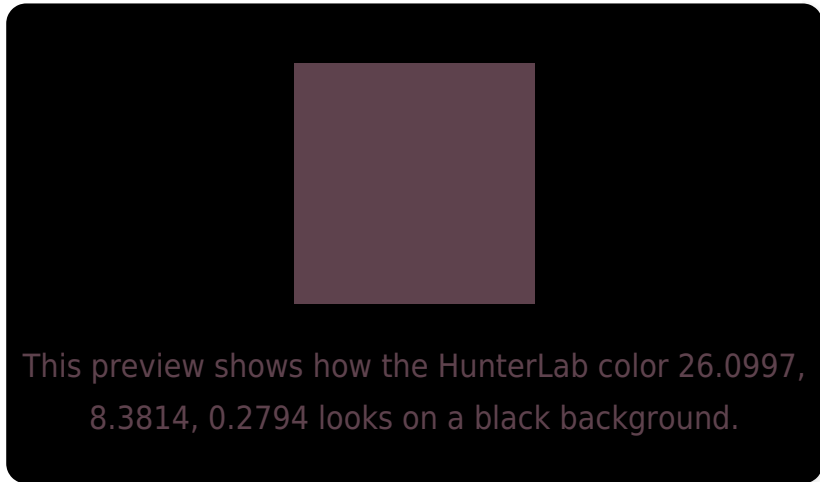
Large Text (above 18pt) WCAG AA ✓ Pass

Any Text WCAG AA ✓ Pass

Large Text (above 18pt) WCAG AAA ✓ Pass

Any Text WCAG AAA ✓ Pass

Black Background



Color Contrast Check

Large Text (above 18pt) WCAG AA × Fail

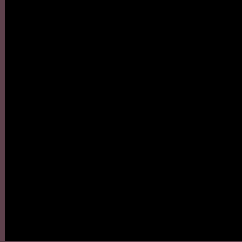
Any Text WCAG AA × Fail

Large Text (above 18pt) WCAG AAA × Fail

Any Text WCAG AAA × Fail

If you want to check with other color combinations, try the [Color Contrast Checker](#).

HunterLab 26.0997, 8.3814, 0.2794 Background



This preview shows how black text looks on a background with the HunterLab color 26.0997, 8.3814, 0.2794.



This preview shows how white text looks on a background with the HunterLab color 26.0997, 8.3814,

0.2794.

Color Blindness Simulation

Color vision deficiency is a very complex topic, and I could not describe the different causes any better than Wikipedia does, so if you want to learn more, you should check out their [article about color blindness](#).

Dichromacy



Original Color

26.0997, 8.3814, 0.2794

Protanopia

26.3120, -0.4616, -1.7824

Deuteranopia

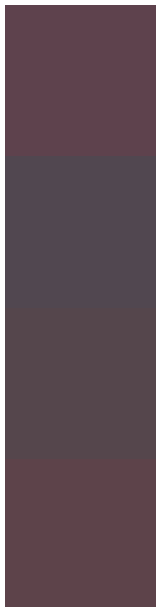
26.1954, 1.3811, 0.6899



Tritanopia

26.0947, 6.9446, 2.2710

Trichromacy



Original Color

26.0997, 8.3814, 0.2794

Protanomaly

26.1438, 2.6871, -1.0548

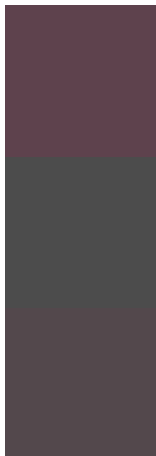
Deuteranomaly

26.1408, 3.6979, 0.6645

Tritanomaly

26.1455, 7.2064, 1.5455

Monochromacy



Original Color

26.0997, 8.3814, 0.2794

Achromatopsia

26.8834, -1.4344, 1.4606

Achromatomaly

26.4491, 2.2324, 1.0095

CSS Examples

Text

The CSS property to change the color of the text to HunterLab 26.0997, 8.3814, 0.2794 is called "color". The color property can be set on classes, ids or directly on the HTML element.

This example shows how text in the color `rgb(94, 66, 77)` looks like.

```
.text, #text, p{  
    color:rgb(94, 66, 77)  
}
```

If you want to add a text shadow in that color use the text-shadow property, you can generate a text shadow directly with our [CSS Text Shadow Generator](#).

Here you see how black text with a 4 pixel rgb(94, 66, 77) colored shadow looks like.

```
.shadow{ text-shadow: 4px 4px 2px rgb(94, 66, 77) }
```

Border

The CSS property to change the border of an element to HunterLab 26.0997, 8.3814, 0.2794 is called "border". The border property can be set on classes, ids or directly on the HTML element.

This example shows the color as border, it can be applied via the CSS property "border" or "border-color".

```
.border, #border, table{ border:4px solid rgb(94, 66, 77) }
```


If only the border color should be changed use the property `border-color`.

```
.border{ border-color:rgb(94, 66, 77) }
```

If you want to add a box shadow in that color use:

Here you see how a box with a 4 pixel `rgb(94, 66, 77)` colored shadow looks like.

```
.boxshadow{ -moz-box-shadow:4px 4px 4px  
4px rgb(94, 66, 77); -webkit-box-  
shadow:4px 4px 4px 4px rgb(94, 66, 77);  
box-shadow:4px 4px 4px 4px rgb(94, 66, 77)  
}
```

Background

The CSS property to change the background color of an element to HunterLab 26.0997, 8.3814, 0.2794 is called "background". The background property can be set on classes, ids or directly on the HTML element.

```
.background, #background, body{  
background: rgb(94, 66, 77) }
```

If only the background color should be changed can be used:

```
.background{ background-color: rgb(94, 66,  
77) }
```

This example shows the color as background, it is applied via the CSS property "background".

To optimize and compress your CSS code, you can use our [online CSS compressor and optimizer](#) based on csstidy. If you want to create a linear or radial gradient as background or border, check our [CSS Gradient Generator](#).

Hey! You found this booklet interesting? Support Converting Colors with the new Membership Option!

The pro membership hides all ads, plus gives you double the colors in the color bucket, and more awesome pro features!

[Learn more, Memberships starting at \\$2.50/m!](#)

**Follow me
on Twitter!**

@ConvertingColor