

Converting Colors

HunterLab(26.2494, 0.3266,
7.8193)

Have a look what the booklet for
HunterLab(26.2494, 0.3266, 7.8193)
contains.

HunterLab(26.1755, 0.4111, 7.6618)	3
<i>Conversions</i>	4
<i>Details</i>	6
<i>Harmonies</i>	12
<i>Previews</i>	24
<i>Color Blindness Simulation</i>	28
<i>CSS Examples</i>	31

Color

**HunterLab(26.1755, 0.4111,
7.6618)**

Conversions

Conversions Part 1

Format	Color
Hex	554838
RGB	85, 72, 56
RGB Percent	33%, 28%, 22%
CMY	0.6667, 0.7176, 0.7804
CMYK	0.00, 0.15, 0.34, 0.67
HSL	33°, 21%, 28%
HSV	33°, 34%, 33%
XYZ	6.7775, 6.8516, 4.7067
YIQ	74.0630, 12.8840, -2.2200

Conversions

Conversions Part 2

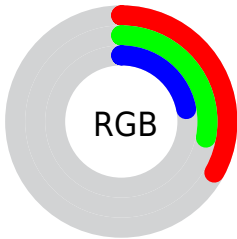
Format	Color
R_{YB}	80, 85, 56
Decimal	5589048
CIE Lab	31.47, 2.74, 11.65
CIE LCh	31, 11.966, 76.763
Yxy	6.8519, 0.3696, 0.3737
Android (android.graphics.Color)	4283779128 (0xFF554838)
YUV	74.0630, -8.9051, 9.5917
Hunter-Lab	26.1755, 0.4111, 7.6618

Details

The HunterLab color **26.1755, 0.4111, 7.6618** is a dark color, and the websafe version is hex **333333**. A complement of this color would be **23.9848, -1.7955, -6.4972**, and the grayscale version is **26.2189, -1.3990, 1.4245**.

A 20% lighter version of the original color is **44.2302, -0.0936, 10.0517**, and **11.5720, 0.5529, 5.1894** is the 20% darker color. If you saturate the color by 10%, you get **25.0962, 1.2353, 9.0064**, and if you desaturate by 10%, it is **27.2951, -0.3046, 6.1146**.

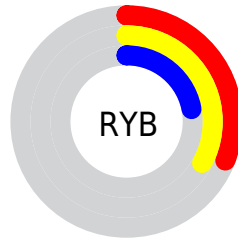
Distribution



Red (33%)

Green (28%)

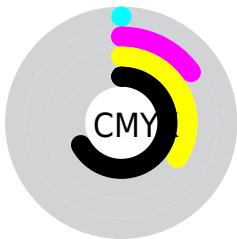
Blue (22%)



Red (31%)

Yellow (33%)

Blue (22%)

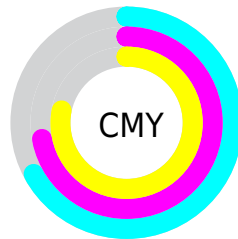


Cyan (0%)

Magenta (15%)

Yellow (34%)

Black (67%)



Cyan (67%)

Magenta (72%)

Yellow (78%)

Brightness & Saturation Gradients

These gradients show how the HunterLab color 26.1755, 0.4111, 7.6618 changes by changing the brightness by 10 percent. The first figure shows a shift by +10% for each color and the second figure -10%.

Similar to the brightness gradients but the following saturation gradients show a change of the HunterLab color 26.1755, 0.4111, 7.6618 by changing the saturation by 10% instead.

■ 26.1755, 0.4111,
7.6618

■ 26.1755, 0.4111,
7.6618

■ 129.0067, -3.8399,
18.7079

■ 18.3566, 0.6318,
6.3233

■ 44.3561, -0.2218,
10.1842

■ 11.5222, 0.7735,
5.1434

■ 54.5746, -0.6167,
11.4080

■ 4.0304, 2.7472,
2.8213

■ 65.4759, -1.0574,
12.6218

0.0000, NaN, NaN

0.0000, NaN, NaN

■ 77.0196, -1.5402,
13.8319

0.0000, NaN, NaN

■ 89.1718, -2.0621,
15.0427

0.0000, NaN, NaN

0.0000, NaN, NaN

■ 101.9034, -2.6207,

16.2575

0.0000, NaN, NaN

115.1891, -3.2139,
17.4787

■ 26.1755, 0.4111,
7.6618

■ 26.1755, 0.4111,
7.6618

■ 25.0962, 1.2353,
9.0064

■ 27.2951, -0.3046,
6.1146

■ 24.0581, 2.1753,
10.1320

■ 28.4508, -0.9144,
4.3791

■ 23.0645, 3.2331,
11.0245

■ 29.6407, -1.4252,
2.4704

■ 22.1182, 4.4095,
11.6715

■ 30.8627, -1.8432,
0.4024

■ 21.2218, 5.7019,
12.0649

■ 32.1148, -2.1745,
-1.8120

■ 20.3738, 7.0836,
12.2604

■ 33.3950, -2.4249,
-4.1609

■ 19.8911, 7.8969,
12.3950

■ 34.7018, -2.6003,
-6.6336

■ 36.0334, -2.7059,
-9.2204

■ 37.3885, -2.7468,
-11.9124

Harmonies

Analogous

The Analogous color harmony consists of three colors that are next to each other on the color wheel.



26.1761, 4.1565, 6.2702



26.1755, 0.4111, 7.6618



26.1761, -3.6078, 7.5751

Triad

The Triadic color harmony groups three colors that are evenly spaced from another and form a triangle on the color wheel.



26.1761, 0.4102, 7.6621



26.1761, -8.4492, -0.8045



26.1761, 4.5241, -4.1785

Complementary

The Complementary color scheme is a pair of colors which are on the opposite of each other on the color wheel.



26.1755, 0.4111, 7.6618



23.9848, -1.7955, -6.4972

Split Complementary

Split-complementary colors differ from the complementary color scheme. The scheme consists of three colors, the original color and two neighbors of the complement color.



26.1761, 0.8874, -6.7128



26.1755, 0.4111, 7.6618



26.1761, -6.5249, -4.5711

Square

The Square scheme is like the rectangle color scheme, but the four colors are evenly spaced on the color wheel.



26.1761, 0.4102, 7.6621



26.1761, -8.5597, 3.0660



26.1761, -3.1586, -6.8665



26.1761, 6.6272, -0.3300

Rectangle

The Rectangle color scheme consists of four colors that form a rectangle on the color wheel.



26.1755, 0.4111, 7.6618



26.1761, -5.9004, 6.6947



26.1761, -3.1586, -6.8665



26.1761, 3.4308, -5.2363

Sweetspot

The Sweet Spot groups the original color and five complimentary colors.



26.1761, 0.4102, 7.6621



37.7316, -1.4614, 4.7994



22.7816, 8.9951, -0.4789



19.0322, -0.7100, 2.5357



69.0652, -3.6851, 3.7524



19.9203, -1.0629, 1.0823

Same Dimension

The Same Dimension uses a secret algorithm to generate beautiful new colors.



26.1761, 0.4102, 7.6621



33.0136, 1.4116, 11.4694



29.4053, -5.4559, 10.4799



15.1061, -0.6222, 1.7586



25.0398, 10.6746, 15.6163



57.8045, 28.6576, 36.1206

Inverse Universe

The Inverse Universe completely reimagines the original color for something new.



23.9848, -1.7955, -6.4972



29.5024, -2.0686, -11.3029



20.8985, 4.1446, -11.4325



14.8040, -0.9329, -0.1830



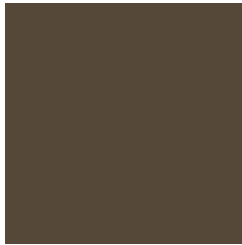
17.8264, 6.0149, -35.2659



40.1357, 18.7309, -90.6006

Previews

White Background



This preview shows how the HunterLab color 26.1755, 0.4111, 7.6618 looks on a white background.

Color Contrast Check

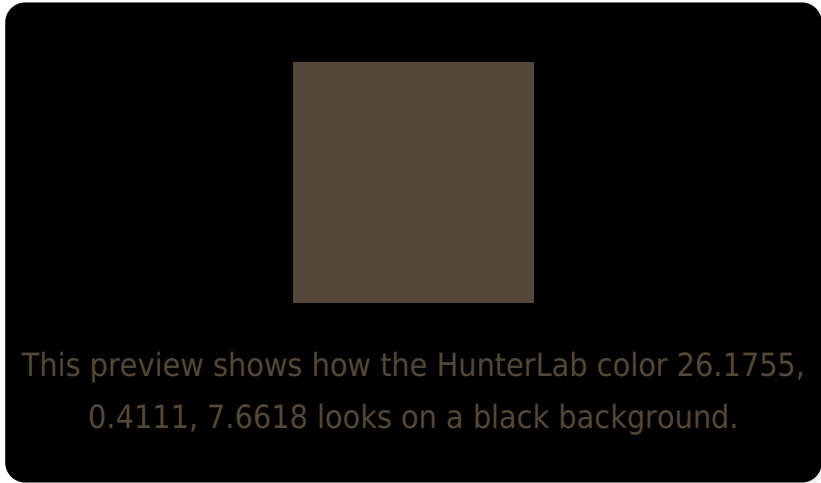
Large Text (above 18pt) WCAG AA ✓ Pass

Any Text WCAG AA ✓ Pass

Large Text (above 18pt) WCAG AAA ✓ Pass

Any Text WCAG AAA ✓ Pass

Black Background



Color Contrast Check

Large Text (above 18pt) WCAG AA × Fail

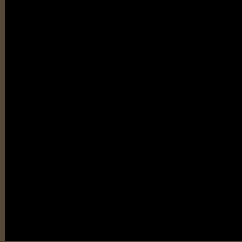
Any Text WCAG AA × Fail

Large Text (above 18pt) WCAG AAA × Fail

Any Text WCAG AAA × Fail

If you want to check with other color combinations, try the [Color Contrast Checker](#).

HunterLab 26.1755, 0.4111, 7.6618 Background



This preview shows how black text looks on a background with the HunterLab color 26.1755, 0.4111, 7.6618.

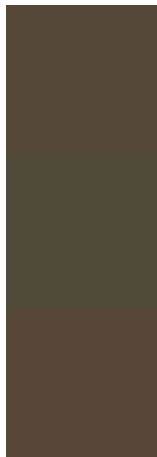


This preview shows how white text looks on a background with the HunterLab color 26.1755, 0.4111,

Color Blindness Simulation

Color vision deficiency is a very complex topic, and I could not describe the different causes any better than Wikipedia does, so if you want to learn more, you should check out their [article about color blindness](#).

Dichromacy



Original Color

26.1755, 0.4111, 7.6618

Protanopia

26.1825, -2.1071, 7.3310

Deuteranopia

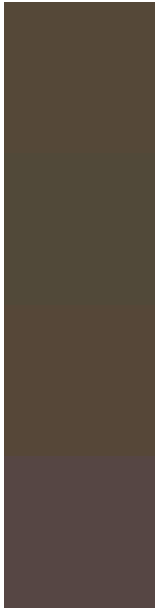
26.1118, 1.4559, 7.6202



Tritanopia

26.0586, 4.5982, 0.9921

Trichromacy



Original Color

26.1755, 0.4111, 7.6618

Protanomaly

26.0956, -1.1074, 7.2658

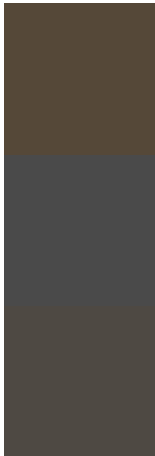
Deuteranomaly

26.0201, 1.1465, 7.5283

Tritanomaly

26.0310, 2.9353, 3.6353

Monochromacy



Original Color

26.1755, 0.4111, 7.6618

Achromatopsia

26.1683, -1.3963, 1.4218

Achromatomaly

26.0577, -0.8176, 3.9599

CSS Examples

Text

The CSS property to change the color of the text to HunterLab 26.1755, 0.4111, 7.6618 is called "color". The color property can be set on classes, ids or directly on the HTML element.

This example shows how text in the color `rgb(85, 72, 56)` looks like.

```
.text, #text, p{  
    color:rgb(85, 72, 56)  
}
```

If you want to add a text shadow in that color use the text-shadow property, you can generate a text shadow directly with our [CSS Text Shadow Generator](#).

Here you see how black text with a 4 pixel rgb(85, 72, 56) colored shadow looks like.

```
.shadow{ text-shadow: 4px 4px 2px rgb(85, 72, 56) }
```

Border

The CSS property to change the border of an element to HunterLab 26.1755, 0.4111, 7.6618 is called "border".

The border property can be set on classes, ids or directly on the HTML element.

This example shows the color as border, it can be applied via the CSS property "border" or "border-color".

```
.border, #border, table{ border:4px solid rgb(85, 72, 56) }
```


If only the border color should be changed use the property `border-color`.

```
.border{ border-color:rgb(85, 72, 56) }
```

If you want to add a box shadow in that color use:

Here you see how a box with a 4 pixel `rgb(85, 72, 56)` colored shadow looks like.

```
.boxshadow{ -moz-box-shadow:4px 4px 4px  
4px rgb(85, 72, 56); -webkit-box-  
shadow:4px 4px 4px 4px rgb(85, 72, 56);  
box-shadow:4px 4px 4px 4px rgb(85, 72, 56)  
}
```

Background

The CSS property to change the background color of an element to HunterLab 26.1755, 0.4111, 7.6618 is called "background". The background property can be set on classes, ids or directly on the HTML element.

```
.background, #background, body{  
background: rgb(85, 72, 56) }
```

If only the background color should be changed can be used:

```
.background{ background-color: rgb(85, 72,  
56) }
```

This example shows the color as background, it is applied via the CSS property "background".

To optimize and compress your CSS code, you can use our [online CSS compressor and optimizer](#) based on csstidy. If you want to create a linear or radial gradient as background or border, check our [CSS Gradient Generator](#).

Hey! You found this booklet interesting? Support Converting Colors with the new Membership Option!

The pro membership hides all ads, plus gives you double the colors in the color bucket, and more awesome pro features!

[Learn more, Memberships starting at \\$2.50/m!](#)

**Follow me
on Twitter!**

@ConvertingColor