

Converting Colors

HunterLab(26.3170, -0.0672,
4.4278)

Have a look what the booklet for
HunterLab(26.3170, -0.0672, 4.4278)
contains.

HunterLab(26.3053, 0.0340, 4.2410)	3
<i>Conversions</i>	4
<i>Details</i>	6
<i>Harmonies</i>	12
<i>Previews</i>	24
<i>Color Blindness Simulation</i>	28
<i>CSS Examples</i>	31

Color

**HunterLab(26.3053, 0.0340,
4.2410)**

Conversions

Conversions Part 1

Format	Color
Hex	514943
RGB	81, 73, 67
RGB Percent	32%, 29%, 26%
CMY	0.6824, 0.7137, 0.7373
CMYK	0.00, 0.10, 0.17, 0.68
HSL	26°, 9%, 29%
HSV	26°, 17%, 32%
XYZ	6.7890, 6.9197, 6.2880
YIQ	74.7080, 6.6940, -0.1700

Conversions

Conversions Part 2

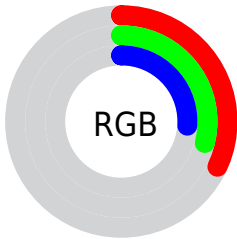
Format	Color
R_{YB}	81, 78, 67
Decimal	5327171
CIE Lab	31.62, 2.18, 4.80
CIE LCh	32, 5.276, 65.572
Yxy	6.9200, 0.3395, 0.3460
Android (android.graphics.Color)	4283517251 (0xFF514943)
YUV	74.7080, -3.8000, 5.5181
Hunter-Lab	26.3053, 0.0340, 4.2410

Details

The HunterLab color **26.3053, 0.0340, 4.2410** is a dark color, and the websafe version is hex **333333**. A complement of this color would be **26.1140, -2.5269, -1.6274**, and the grayscale version is **26.4331, -1.4104, 1.4362**.

A 20% lighter version of the original color is **44.6124, -1.0102, 5.9163**, and **11.7028, 0.2134, 2.8369** is the 20% darker color. If you saturate the color by 10%, you get **24.9876, 1.0622, 5.6301**, and if you desaturate by 10%, it is **27.6678, -0.9031, 2.7295**.

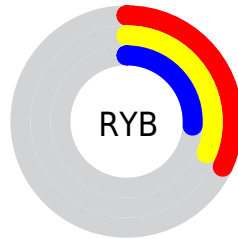
Distribution



Red (32%)

Green (29%)

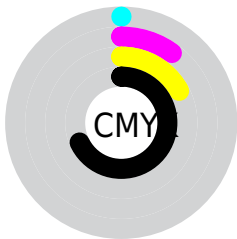
Blue (26%)



Red (32%)

Yellow (31%)

Blue (26%)

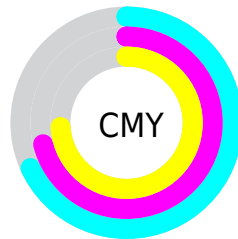


Cyan (0%)

Magenta (10%)

Yellow (17%)

Black (68%)



Cyan (68%)

Magenta (71%)

Yellow (74%)

Brightness & Saturation Gradients

These gradients show how the HunterLab color 26.3053, 0.0340, 4.2410 changes by changing the brightness by 10 percent. The first figure shows a shift by +10% for each color and the second figure -10%.

Similar to the brightness gradients but the following saturation gradients show a change of the HunterLab color 26.3053, 0.0340, 4.2410 by changing the saturation by 10% instead.

■ 26.3053, 0.0340,
4.2410

■ 26.3053, 0.0340,
4.2410

■ 129.2274, -4.4741,
11.9989

■ 18.4719, 0.2954,
3.4633

■ 44.5108, -0.6689,
5.8301

■ 11.6210, 0.4831,
2.6813

■ 54.7404, -1.0951,
6.6498

■ 4.2402, 2.0157,
2.9682

■ 65.6520, -1.5651,
7.4892

0.0000, NaN, NaN

0.0000, NaN, NaN

■ 77.2055, -2.0756,
8.3491

0.0000, NaN, NaN

■ 89.3670, -2.6238,
9.2300

0.0000, NaN, NaN

■ 102.1074, -3.2076,

0.0000, NaN, NaN

10.1319

0.0000, NaN, NaN

115.4016, -3.8249,
11.0549

■ 26.3053, 0.0340,
4.2410

■ 26.3053, 0.0340,
4.2410

■ 24.9876, 1.0622,
5.6301

■ 27.6678, -0.9031,
2.7295

■ 23.7170, 2.1904,
6.8805

■ 29.0697, -1.7535,
1.1077

■ 22.4985, 3.4234,
7.9760

■ 30.5085, -2.5250,
-0.6123

■ 21.3371, 4.7651,
8.8986

■ 31.9813, -3.2243,
-2.4206

■ 20.2381, 6.2161,
9.6297

■ 33.4855, -3.8574,
-4.3084

■ 19.2074, 7.7729,
10.1516

■ 35.0191, -4.4303,
-6.2681

■ 18.2508, 9.4254,
10.4501

■ 36.5799, -4.9482,
-8.2931

■ 17.3632, 11.1032,
10.6777

■ 38.1663, -5.4159,
-10.3780

■ 17.1326, 11.5504,
10.7592

■ 39.7766, -5.8379,
-12.5176

Harmonies

Analogous

The Analogous color harmony consists of three colors that are next to each other on the color wheel.



26.3059, 1.4529, 3.2659



26.3053, 0.0340, 4.2410



26.3059, -1.7383, 4.4860

Triad

The Triadic color harmony groups three colors that are evenly spaced from another and form a triangle on the color wheel.



26.3059, 0.0332, 4.2414



26.3059, -4.7431, 1.1120



26.3059, 0.6269, -1.3723

Complementary

The Complementary color scheme is a pair of colors which are on the opposite of each other on the color wheel.



26.3053, 0.0340, 4.2410



26.1140, -2.5269, -1.6274

Split Complementary

Split-complementary colors differ from the complementary color scheme. The scheme consists of three colors, the original color and two neighbors of the complement color.



26.3059, -1.0700, -2.0389



26.3053, 0.0340, 4.2410



26.3059, -4.1459, -0.5445

Square

The Square scheme is like the rectangle color scheme, but the four colors are evenly spaced on the color wheel.



26.3059, 0.0332, 4.2414



26.3059, -4.4654, 2.7500



26.3059, -2.8130, -1.7263



26.3059, 1.8020, 0.0419

Rectangle

The Rectangle color scheme consists of four colors that form a rectangle on the color wheel.



26.3053, 0.0340, 4.2410



26.3059, -2.8740, 4.2169



26.3059, -2.8130, -1.7263



26.3059, 0.0969, -1.6954

Sweetspot

The Sweet Spot groups the original color and five complimentary colors.



26.3059, 0.0332, 4.2414



36.4696, -1.4211, 3.1250



25.0480, 3.7433, -0.3276



18.5355, -0.7001, 1.6343



67.9972, -3.6282, 3.6944



19.0543, -1.0167, 1.0353

Same Dimension

The Same Dimension uses a secret algorithm to generate beautiful new colors.



26.3059, 0.0332, 4.2414



33.5408, 0.6236, 6.3571



28.0492, -2.8658, 6.0088



14.1970, -0.3995, 1.5275



21.9981, 15.9061, 13.8336



51.1653, 42.3413, 32.2691

Inverse Universe

The Inverse Universe completely reimagines the original color for something new.



26.1140, -2.5269, -1.6274



33.2273, -3.5516, -3.2193



24.3761, 0.3797, -3.9075



14.1465, -1.0740, -0.0175



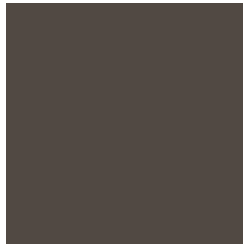
20.5284, -0.0267, -25.6011



47.4203, 3.2205, -66.2235

Previews

White Background



This preview shows how the HunterLab color 26.3053, 0.0340, 4.2410 looks on a white background.

Color Contrast Check

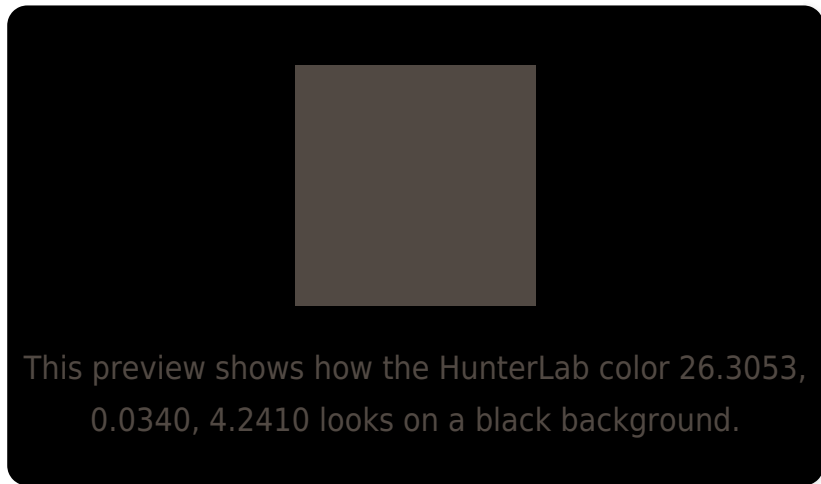
Large Text (above 18pt) WCAG AA ✓ Pass

Any Text WCAG AA ✓ Pass

Large Text (above 18pt) WCAG AAA ✓ Pass

Any Text WCAG AAA ✓ Pass

Black Background



Color Contrast Check

Large Text (above 18pt) WCAG AA × Fail

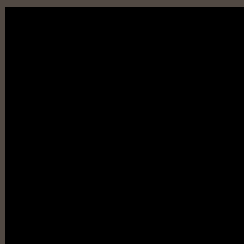
Any Text WCAG AA × Fail

Large Text (above 18pt) WCAG AAA × Fail

Any Text WCAG AAA × Fail

If you want to check with other color combinations, try the [Color Contrast Checker](#).

HunterLab 26.3053, 0.0340, 4.2410 Background



This preview shows how black text looks on a background with the HunterLab color 26.3053, 0.0340, 4.2410.

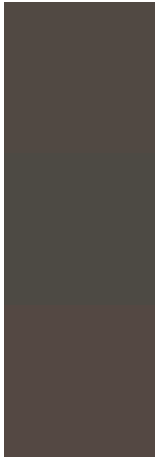


This preview shows how white text looks on a background with the HunterLab color 26.3053, 0.0340,

Color Blindness Simulation

Color vision deficiency is a very complex topic, and I could not describe the different causes any better than Wikipedia does, so if you want to learn more, you should check out their [article about color blindness](#).

Dichromacy



Original Color

26.3053, 0.0340, 4.2410

Protanopia

26.2539, -1.3925, 3.8027

Deuteranopia

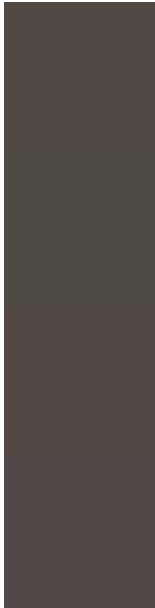
26.3150, 1.3405, 4.2743



Tritanopia

26.3901, 2.0884, 0.5237

Trichromacy



Original Color

26.3053, 0.0340, 4.2410

Protanomaly

26.3337, -1.1157, 3.8941

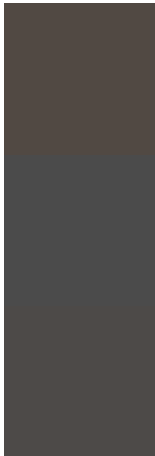
Deuteranomaly

26.2278, 1.0458, 4.1757

Tritanomaly

26.2861, 1.5314, 2.0066

Monochromacy



Original Color

26.3053, 0.0340, 4.2410

Achromatopsia

26.5255, -1.4153, 1.4412

Achromatomaly

26.3500, -0.8673, 2.4265

CSS Examples

Text

The CSS property to change the color of the text to HunterLab 26.3053, 0.0340, 4.2410 is called "color". The color property can be set on classes, ids or directly on the HTML element.

This example shows how text in the color `rgb(81, 73, 67)` looks like.

```
.text, #text, p{  
    color:rgb(81, 73, 67)  
}
```

If you want to add a text shadow in that color use the text-shadow property, you can generate a text shadow directly with our [CSS Text Shadow Generator](#).

Here you see how black text with a 4 pixel rgb(81, 73, 67) colored shadow looks like.

```
.shadow{ text-shadow: 4px 4px 2px rgb(81, 73, 67) }
```

Border

The CSS property to change the border of an element to HunterLab 26.3053, 0.0340, 4.2410 is called "border".

The border property can be set on classes, ids or directly on the HTML element.

This example shows the color as border, it can be applied via the CSS property "border" or "border-color".

```
.border, #border, table{ border:4px solid rgb(81, 73, 67) }
```


If only the border color should be changed use the property border-color.

```
.border{ border-color:rgb(81, 73, 67) }
```

If you want to add a box shadow in that color use:

Here you see how a box with a 4 pixel rgb(81, 73, 67) colored shadow looks like.

```
.boxshadow{ -moz-box-shadow:4px 4px 4px  
4px rgb(81, 73, 67); -webkit-box-  
shadow:4px 4px 4px 4px rgb(81, 73, 67);  
box-shadow:4px 4px 4px 4px rgb(81, 73, 67)  
}
```

Background

The CSS property to change the background color of an element to HunterLab 26.3053, 0.0340, 4.2410 is called "background". The background property can be set on classes, ids or directly on the HTML element.

```
.background, #background, body{  
background: rgb(81, 73, 67) }
```

If only the background color should be changed can be used:

```
.background{ background-color: rgb(81, 73,  
67) }
```

This example shows the color as background, it is applied via the CSS property "background".

To optimize and compress your CSS code, you can use our [online CSS compressor and optimizer](#) based on csstidy. If you want to create a linear or radial gradient as background or border, check our [CSS Gradient Generator](#).

Hey! You found this booklet interesting? Support Converting Colors with the new Membership Option!

The pro membership hides all ads, plus gives you double the colors in the color bucket, and more awesome pro features!

[Learn more, Memberships starting at \\$2.50/m!](#)

**Follow me
on Twitter!**

@ConvertingColor