

Converting Colors

HunterLab(26.6018, -0.1443,
3.8408)

Have a look what the booklet for
HunterLab(26.6018, -0.1443, 3.8408)
contains.

HunterLab(26.6018, -0.1443, 3.8408)	3
<i>Conversions</i>	4
<i>Details</i>	6
<i>Harmonies</i>	12
<i>Previews</i>	24
<i>Color Blindness Simulation</i>	28
<i>CSS Examples</i>	31

Color

**HunterLab(26.6018, -0.1443,
3.8408)**

Conversions

Conversions Part 1

Format	Color
Hex	514A45
RGB	81, 74, 69
RGB Percent	32%, 29%, 27%
CMY	0.6824, 0.7098, 0.7294
CMYK	0.00, 0.09, 0.15, 0.68
HSL	25°, 8%, 29%
HSV	25°, 15%, 32%
XYZ	6.9163, 7.0766, 6.6316
YIQ	75.5230, 5.7770, -0.0710

Conversions

Conversions Part 2

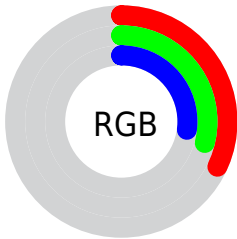
Format	Color
RYB	81, 78, 69
Decimal	5327429
CIELab	31.98, 1.93, 4.04
CIELCh	32, 4.474, 64.438
Yxy	7.0769, 0.3353, 0.3431
Android (android.graphics.Color)	4283517509 (0xFF514A45)
YUV	75.5230, -3.2158, 4.8033
Hunter-Lab	26.6018, -0.1443, 3.8408

Details

The HunterLab color **26.6018, -0.1443, 3.8408** is a dark color, and the websafe version is hex **333333**. A complement of this color would be **26.5104, -2.4668, -1.1178**, and the grayscale version is **26.7228, -1.4259, 1.4519**.

A 20% lighter version of the original color is **44.9401, -1.1929, 5.4674**, and **11.7397, 0.4122, 2.3055** is the 20% darker color. If you saturate the color by 10%, you get **25.2503, 0.9016, 5.2413**, and if you desaturate by 10%, it is **27.9984, -1.1008, 2.3256**.

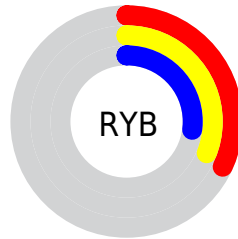
Distribution



Red (32%)

Green (29%)

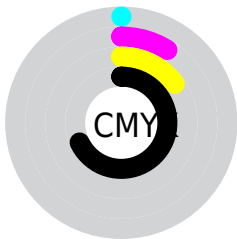
Blue (27%)



Red (32%)

Yellow (31%)

Blue (27%)

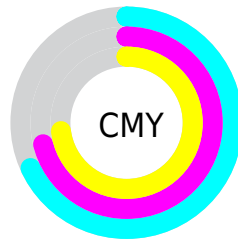


Cyan (0%)

Magenta (9%)

Yellow (15%)

Black (68%)



Cyan (68%)

Magenta (71%)

Yellow (73%)

Brightness & Saturation Gradients

These gradients show how the HunterLab color 26.6018, -0.1443, 3.8408 changes by changing the brightness by 10 percent. The first figure shows a shift by +10% for each color and the second figure -10%.

Similar to the brightness gradients but the following saturation gradients show a change of the HunterLab color 26.6018, -0.1443, 3.8408 by changing the saturation by 10% instead.

■ 26.6018, -0.1443,
3.8408

■ 26.6018, -0.1443,
3.8408

■ 129.7308, -4.7787,
11.2526

■ 18.7356, 0.1372,
3.1214

■ 44.8639, -0.8818,
5.3324

■ 11.8472, 0.3480,
2.4084

■ 55.1186, -1.3233,
6.1098

■ 4.6834, 1.5462,
3.2784

■ 66.0539, -1.8077,
6.9098

0.0000, NaN, NaN

0.0000, NaN, NaN

■ 77.6296, -2.3318,
7.7327

0.0000, NaN, NaN

■ 89.8123, -2.8929,
8.5787

0.0000, NaN, NaN

102.5729, -3.4890,

0.0000, NaN, NaN

115.8864, -4.1181,
10.3389

■ 26.6018, -0.1443,
3.8408

■ 26.6018, -0.1443,
3.8408

■ 25.2503, 0.9016,
5.2413

■ 27.9984, -1.1008,
2.3256

■ 23.9462, 2.0459,
6.5113

■ 29.4347, -1.9726,
0.7072

■ 22.6947, 3.2937,
7.6349

■ 30.9080, -2.7674,
-1.0028

■ 21.5010, 4.6493,
8.5940

■ 32.4154, -3.4919,
-2.7950

■ 20.3707, 6.1140,
9.3697

■ 33.9544, -4.1523,
-4.6612

■ 19.3099, 7.6848,
9.9433

■ 35.5228, -4.7543,
-6.5942

■ 18.3249, 9.3523,
10.2986

■ 37.1185, -5.3032,
-8.5880

■ 17.4159, 11.0694,
10.5148

■ 38.7399, -5.8037,
-10.6374

■ 16.9700, 11.9413,
10.6659

■ 40.3853, -6.2600,
-12.7378

Harmonies

Analogous

The Analogous color harmony consists of three colors that are next to each other on the color wheel.



26.6024, 1.0384, 2.9762



26.6018, -0.1443, 3.8408



26.6024, -1.6472, 4.0791

Triad

The Triadic color harmony groups three colors that are evenly spaced from another and form a triangle on the color wheel.



26.6024, -0.1451, 3.8412



26.6024, -4.2789, 1.2315



26.6024, 0.2561, -0.9542

Complementary

The Complementary color scheme is a pair of colors which are on the opposite of each other on the color wheel.



26.6018, -0.1443, 3.8408



26.5104, -2.4668, -1.1178

Split Complementary

Split-complementary colors differ from the complementary color scheme. The scheme consists of three colors, the original color and two neighbors of the complement color.



26.6024, -1.1938, -1.4827



26.6018, -0.1443, 3.8408



26.6024, -3.7939, -0.1765

Square

The Square scheme is like the rectangle color scheme, but the four colors are evenly spaced on the color wheel.



26.6024, -0.1451, 3.8412



26.6024, -4.0122, 2.6226



26.6024, -2.6731, -1.1904



26.6024, 1.2736, 0.2174

Rectangle

The Rectangle color scheme consists of four colors that form a rectangle on the color wheel.



26.6018, -0.1443, 3.8408



26.6024, -2.6219, 3.8621



26.6024, -2.6731, -1.1904



26.6024, -0.1981, -1.2159

Sweetspot

The Sweet Spot groups the original color and five complimentary colors.



26.6024, -0.1451, 3.8412



36.6441, -1.5161, 2.8944



25.5489, 2.9803, -0.0723



18.6138, -0.7413, 1.5274



67.9972, -3.6282, 3.6944



19.0543, -1.0167, 1.0353

Same Dimension

The Same Dimension uses a secret algorithm to generate beautiful new colors.



26.6024, -0.1451, 3.8412



34.0201, 0.3157, 5.7236



28.1361, -2.6958, 5.4257



14.1859, -0.3809, 1.5154



21.7856, 16.4275, 13.7117



50.6576, 43.6407, 31.9790

Inverse Universe

The Inverse Universe completely reimagines the original color for something new.



26.5104, -2.4668, -1.1178



33.8697, -3.4745, -2.3739



24.9794, 0.0882, -3.0836



14.1578, -1.0924, -0.0040



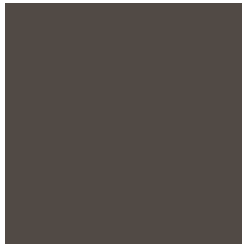
20.8453, -0.5656, -24.8338



48.2174, 1.8116, -64.1782

Previews

White Background



This preview shows how the HunterLab color 26.6018, -0.1443, 3.8408 looks on a white background.

Color Contrast Check

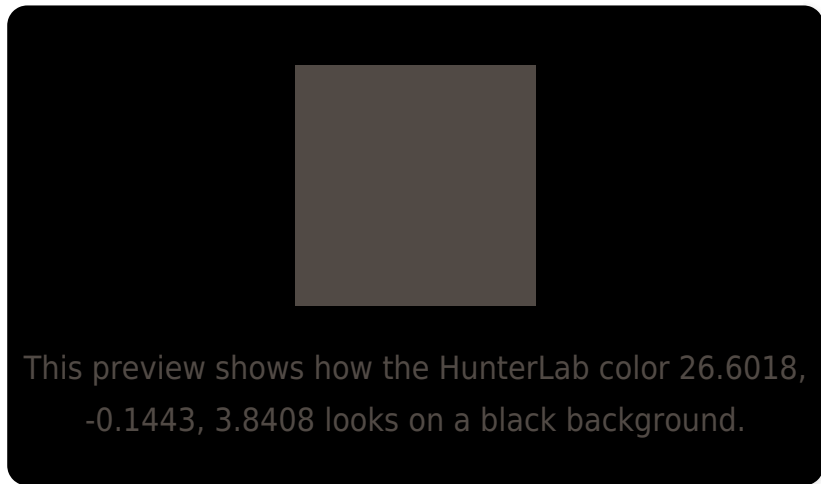
Large Text (above 18pt) WCAG AA ✓ Pass

Any Text WCAG AA ✓ Pass

Large Text (above 18pt) WCAG AAA ✓ Pass

Any Text WCAG AAA ✓ Pass

Black Background



Color Contrast Check

Large Text (above 18pt) WCAG AA × Fail

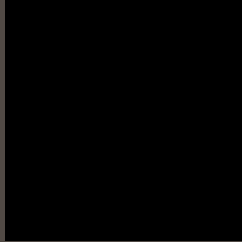
Any Text WCAG AA × Fail

Large Text (above 18pt) WCAG AAA × Fail

Any Text WCAG AAA × Fail

If you want to check with other color combinations, try the [Color Contrast Checker](#).

HunterLab 26.6018, -0.1443, 3.8408 Background



This preview shows how black text looks on a background with the HunterLab color 26.6018, -0.1443, 3.8408.



This preview shows how white text looks on a background with the HunterLab color 26.6018, -0.1443,

3.8408.

Color Blindness Simulation

Color vision deficiency is a very complex topic, and I could not describe the different causes any better than Wikipedia does, so if you want to learn more, you should check out their [article about color blindness](#).

Dichromacy



Original Color

26.6018, -0.1443, 3.8408

Protanopia

26.6347, -1.2834, 3.4912

Deuteranopia

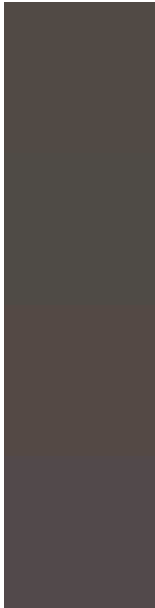
26.6947, 1.4491, 3.9695



Tritanopia

26.6627, 1.7927, 0.4329

Trichromacy



Original Color

26.6018, -0.1443, 3.8408

Protanomaly

26.7144, -1.0067, 3.5837

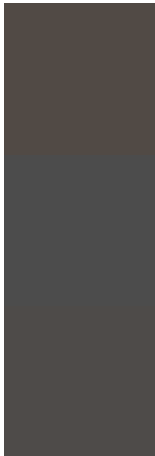
Deuteranomaly

26.6075, 1.1547, 3.8697

Tritanomaly

26.5837, 1.3688, 1.5584

Monochromacy



Original Color

26.6018, -0.1443, 3.8408

Achromatopsia

26.8834, -1.4344, 1.4606

Achromatomaly

26.7075, -0.8854, 2.4483

CSS Examples

Text

The CSS property to change the color of the text to HunterLab 26.6018, -0.1443, 3.8408 is called "color". The color property can be set on classes, ids or directly on the HTML element.

This example shows how text in the color `rgb(81, 74, 69)` looks like.

```
.text, #text, p{  
    color:rgb(81, 74, 69)  
}
```

If you want to add a text shadow in that color use the text-shadow property, you can generate a text shadow directly with our [CSS Text Shadow Generator](#).

Here you see how black text with a 4 pixel rgb(81, 74, 69) colored shadow looks like.

```
.shadow{ text-shadow: 4px 4px 2px rgb(81, 74, 69) }
```

Border

The CSS property to change the border of an element to HunterLab 26.6018, -0.1443, 3.8408 is called "border". The border property can be set on classes, ids or directly on the HTML element.

This example shows the color as border, it can be applied via the CSS property "border" or "border-color".

```
.border, #border, table{ border:4px solid rgb(81, 74, 69) }
```


If only the border color should be changed use the property `border-color`.

```
.border{ border-color:rgb(81, 74, 69) }
```

If you want to add a box shadow in that color use:

Here you see how a box with a 4 pixel `rgb(81, 74, 69)` colored shadow looks like.

```
.boxshadow{ -moz-box-shadow:4px 4px 4px  
4px rgb(81, 74, 69); -webkit-box-  
shadow:4px 4px 4px 4px rgb(81, 74, 69);  
box-shadow:4px 4px 4px 4px rgb(81, 74, 69)  
}
```

Background

The CSS property to change the background color of an element to HunterLab 26.6018, -0.1443, 3.8408 is called "background". The background property can be set on classes, ids or directly on the HTML element.

```
.background, #background, body{  
background: rgb(81, 74, 69) }
```

If only the background color should be changed can be used:

```
.background{ background-color: rgb(81, 74,  
69) }
```

This example shows the color as background, it is applied via the CSS property "background".

To optimize and compress your CSS code, you can use our [online CSS compressor and optimizer](#) based on csstidy. If you want to create a linear or radial gradient as background or border, check our [CSS Gradient Generator](#).

Hey! You found this booklet interesting? Support Converting Colors with the new Membership Option!

The pro membership hides all ads, plus gives you double the colors in the color bucket, and more awesome pro features!

[Learn more, Memberships starting at \\$2.50/m!](#)

**Follow me
on Twitter!**

@ConvertingColor