

Converting Colors

HunterLab(26.6201, 6.3821,
1.8475)

Have a look what the booklet for
HunterLab(26.6201, 6.3821, 1.8475)
contains.

HunterLab(26.6297, 6.4347, 1.7010)	3
<i>Conversions</i>	4
<i>Details</i>	6
<i>Harmonies</i>	12
<i>Previews</i>	24
<i>Color Blindness Simulation</i>	28
<i>CSS Examples</i>	31

Color

**HunterLab(26.6297, 6.4347,
1.7010)**

Conversions

Conversions Part 1

Format	Color
Hex	5D454B
RGB	93, 69, 75
RGB Percent	36%, 27%, 29%
CMY	0.6353, 0.7294, 0.7059
CMYK	0.00, 0.26, 0.19, 0.64
HSL	345°, 15%, 32%
HSV	345°, 26%, 36%
XYZ	7.9123, 7.0914, 7.6084
YIQ	76.8600, 12.3780, 6.9540

Conversions

Conversions Part 2

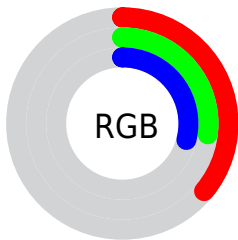
Format	Color
R_{YB}	93, 69, 75
Decimal	6112587
CIE Lab	32.01, 11.36, 0.41
CIE LCh	32, 11.368, 2.049
Yxy	7.0917, 0.3499, 0.3136
Android (android.graphics.Color)	4284302667 (0xFF5D454B)
YUV	76.8600, -0.9170, 14.1548
Hunter-Lab	26.6297, 6.4347, 1.7010

Details

The HunterLab color **26.6297, 6.4347, 1.7010** is a dark color, and the websafe version is hex **333333**. A complement of this color would be **31.2765, -8.5677, 2.0287**, and the grayscale version is **27.1925, -1.4509, 1.4774**.

A 20% lighter version of the original color is **44.8409, 7.1181, 2.5421**, and **11.9103, 5.2857, 0.9785** is the 20% darker color. If you saturate the color by 10%, you get **24.3833, 9.7350, 1.8876**, and if you desaturate by 10%, it is **29.0308, 3.1950, 1.6512**.

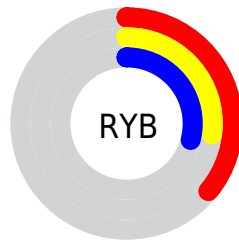
Distribution



Red (36%)

Green (27%)

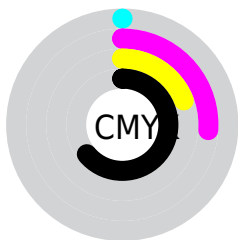
Blue (29%)



Red (36%)

Yellow (27%)

Blue (29%)

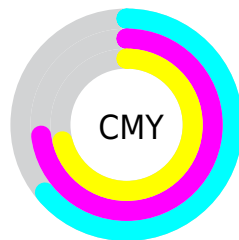


Cyan (0%)

Magenta (26%)

Yellow (19%)

Black (64%)



Cyan (64%)

Magenta (73%)

Yellow (71%)

Brightness & Saturation Gradients

These gradients show how the HunterLab color 26.6297, 6.4347, 1.7010 changes by changing the brightness by 10 percent. The first figure shows a shift by +10% for each color and the second figure -10%.

Similar to the brightness gradients but the following saturation gradients show a change of the HunterLab color 26.6297, 6.4347, 1.7010 by changing the saturation by 10% instead.

■ 26.6297, 6.4347,
1.7010

■ 26.6297, 6.4347,
1.7010

129.7782, 5.9251,
7.4927

■ 18.7604, 6.0878,
1.2451

■ 44.8971, 6.8048,
2.7441

■ 11.8685, 5.6007,
0.8378

■ 55.1542, 6.8621,
3.3239

■ 4.7229, 10.2294,
0.6137

■ 66.0917, 6.8480,
3.9394

0.0000, NaN, NaN

0.0000, NaN, NaN

■ 77.6695, 6.7703,
4.5886

0.0000, NaN, NaN

■ 89.8541, 6.6347,
5.2699

0.0000, NaN, NaN

102.6167, 6.4461,

0.0000, NaN, NaN

115.9320, 6.2085,
6.7231

■ 26.6297, 6.4347,
1.7010

■ 26.6297, 6.4347,
1.7010

■ 24.3833, 9.7350,
1.8876

■ 29.0308, 3.1950,
1.6512

■ 22.3168, 13.0616,
2.2323

■ 31.5626, 0.0333,
1.7154

■ 20.4626, 16.3406,
2.7563

■ 34.2078, -3.0495,
1.8753

■ 18.8563, 19.4497,
3.4708

■ 36.9518, -6.0584,
2.1154

■ 17.5340, 22.2111,
4.3679

■ 39.7828, -9.0012,
2.4229

■ 16.5253, 24.4120,
5.4089

■ 42.6912, -11.8866,
2.7874

■ 15.7710, 26.1056,
6.4630

■ 45.6691, -14.7231,
3.2007

■ 15.4597, 26.8817,
6.8384

■ 48.7100, -17.5189,
3.6558

■ 51.8084, -20.2808,
4.1473

Harmonies

Analogous

The Analogous color harmony consists of three colors that are next to each other on the color wheel.



26.6303, 5.4784, -2.0883



26.6297, 6.4347, 1.7010



26.6303, 5.1863, 4.9405

Triad

The Triadic color harmony groups three colors that are evenly spaced from another and form a triangle on the color wheel.



26.6303, 6.4338, 1.7015



26.6303, -5.2589, 6.7809



26.6303, -4.8229, -5.5960

Complementary

The Complementary color scheme is a pair of colors which are on the opposite of each other on the color wheel.



26.6297, 6.4347, 1.7010



31.2765, -8.5677, 2.0287

Split Complementary

Split-complementary colors differ from the complementary color scheme. The scheme consists of three colors, the original color and two neighbors of the complement color.



26.6303, -7.4435, -2.5890



26.6297, 6.4347, 1.7010



26.6303, -7.6849, 4.5601

Square

The Square scheme is like the rectangle color scheme, but the four colors are evenly spaced on the color wheel.



26.6303, 6.4338, 1.7015



26.6303, -1.6880, 7.6004



26.6303, -8.4616, 1.1951



26.6303, -1.1557, -6.6438

Rectangle

The Rectangle color scheme consists of four colors that form a rectangle on the color wheel.



26.6297, 6.4347, 1.7010



26.6303, 3.3127, 6.4512



26.6303, -8.4616, 1.1951



26.6303, -5.8480, -4.7615

Sweetspot

The Sweet Spot groups the original color and five complimentary colors.



26.6303, 6.4338, 1.7015



40.4665, 1.0423, 2.2111



26.5954, 7.3840, -6.5697



20.0748, 0.7528, 1.1009



71.2094, -3.7996, 3.8689



21.6712, -1.1563, 1.1774

Same Dimension

The Same Dimension uses a secret algorithm to generate beautiful new colors.



26.6303, 6.4338, 1.7015



33.0075, 11.0577, 2.3522



27.9093, 2.9940, 5.2884



15.3505, 0.4870, 0.8402



18.3674, 31.8959, 8.4490



42.8357, 74.1013, 21.9135

Inverse Universe

The Inverse Universe completely reimagines the original color for something new.



26.6303, 6.4338, 1.7015



33.0075, 11.0577, 2.3522



29.7861, -5.1519, -2.3499



15.3505, 0.4870, 0.8402



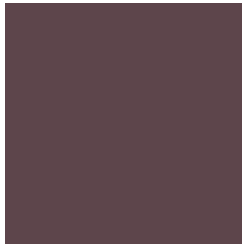
18.3674, 31.8959, 8.4490



42.8357, 74.1013, 21.9135

Previews

White Background



This preview shows how the HunterLab color 26.6297, 6.4347, 1.7010 looks on a white background.

Color Contrast Check

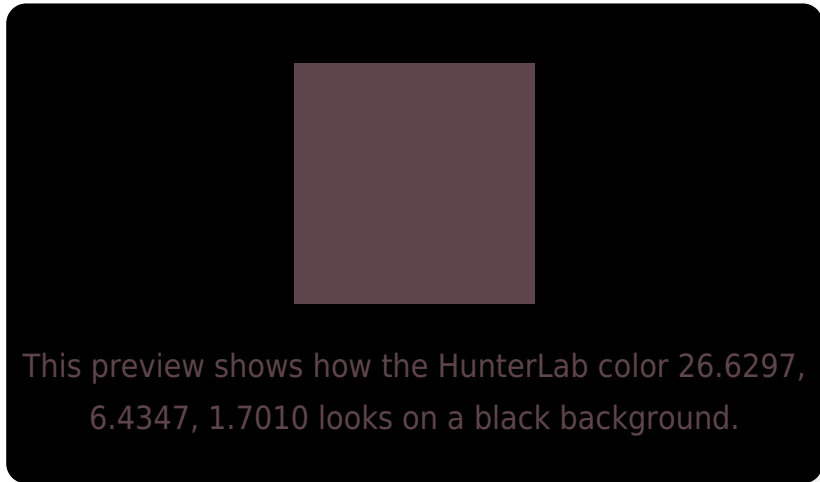
Large Text (above 18pt) WCAG AA ✓ Pass

Any Text WCAG AA ✓ Pass

Large Text (above 18pt) WCAG AAA ✓ Pass

Any Text WCAG AAA ✓ Pass

Black Background



Color Contrast Check

Large Text (above 18pt) WCAG AA × Fail

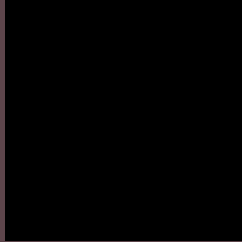
Any Text WCAG AA × Fail

Large Text (above 18pt) WCAG AAA × Fail

Any Text WCAG AAA × Fail

If you want to check with other color combinations, try the [Color Contrast Checker](#).

HunterLab 26.6297, 6.4347, 1.7010 Background



This preview shows how black text looks on a background with the HunterLab color 26.6297, 6.4347, 1.7010.



This preview shows how white text looks on a background with the HunterLab color 26.6297, 6.4347,

Color Blindness Simulation

Color vision deficiency is a very complex topic, and I could not describe the different causes any better than Wikipedia does, so if you want to learn more, you should check out their [article about color blindness](#).

Dichromacy



Original Color

26.6297, 6.4347, 1.7010

Protanopia

26.7080, -0.5711, 0.0262

Deuteranopia

26.6430, 1.5178, 2.0268



Tritanopia

26.6042, 6.3024, 2.0656

Trichromacy



Original Color

26.6297, 6.4347, 1.7010

Protanomaly

26.6627, 1.7927, 0.4329

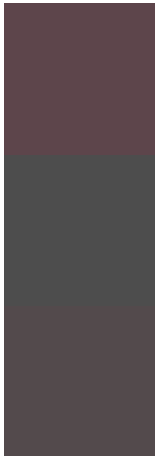
Deuteranomaly

26.7495, 3.1283, 2.1781

Tritanomaly

26.6042, 6.3024, 2.0656

Monochromacy



Original Color

26.6297, 6.4347, 1.7010

Achromatopsia

27.2422, -1.4536, 1.4801

Achromatomaly

26.9413, 1.3551, 1.5776

CSS Examples

Text

The CSS property to change the color of the text to HunterLab 26.6297, 6.4347, 1.7010 is called "color". The color property can be set on classes, ids or directly on the HTML element.

This example shows how text in the color `rgb(93, 69, 75)` looks like.

```
.text, #text, p{  
    color:rgb(93, 69, 75)  
}
```

If you want to add a text shadow in that color use the text-shadow property, you can generate a text shadow directly with our [CSS Text Shadow Generator](#).

Here you see how black text with a 4 pixel rgb(93, 69, 75) colored shadow looks like.

```
.shadow{ text-shadow: 4px 4px 2px rgb(93, 69, 75) }
```

Border

The CSS property to change the border of an element to HunterLab 26.6297, 6.4347, 1.7010 is called "border".

The border property can be set on classes, ids or directly on the HTML element.

This example shows the color as border, it can be applied via the CSS property "border" or "border-color".

```
.border, #border, table{ border:4px solid rgb(93, 69, 75) }
```


If only the border color should be changed use the property `border-color`.

```
.border{ border-color:rgb(93, 69, 75) }
```

If you want to add a box shadow in that color use:

Here you see how a box with a 4 pixel `rgb(93, 69, 75)` colored shadow looks like.

```
.boxshadow{ -moz-box-shadow:4px 4px 4px  
4px rgb(93, 69, 75); -webkit-box-  
shadow:4px 4px 4px 4px rgb(93, 69, 75);  
box-shadow:4px 4px 4px 4px rgb(93, 69, 75)  
}
```

Background

The CSS property to change the background color of an element to HunterLab 26.6297, 6.4347, 1.7010 is called "background". The background property can be set on classes, ids or directly on the HTML element.

```
.background, #background, body{  
background: rgb(93, 69, 75) }
```

If only the background color should be changed can be used:

```
.background{ background-color: rgb(93, 69,  
75) }
```

This example shows the color as background, it is applied via the CSS property "background".

To optimize and compress your CSS code, you can use our [online CSS compressor and optimizer](#) based on csstidy. If you want to create a linear or radial gradient as background or border, check our [CSS Gradient Generator](#).

Hey! You found this booklet interesting? Support Converting Colors with the new Membership Option!

The pro membership hides all ads, plus gives you double the colors in the color bucket, and more awesome pro features!

[Learn more, Memberships starting at \\$2.50/m!](#)

**Follow me
on Twitter!**

@ConvertingColor