

Converting Colors

HunterLab(26.7055, 2.7533,
10.5315)

Have a look what the booklet for
HunterLab(26.7055, 2.7533,
10.5315) contains.

HunterLab(26.6297, 2.8828, 10.4719)	3
<i>Conversions</i>	4
<i>Details</i>	6
<i>Harmonies</i>	12
<i>Previews</i>	24
<i>Color Blindness Simulation</i>	28
<i>CSS Examples</i>	31

Color

**HunterLab(26.6297, 2.8828,
10.4719)**

Conversions

Conversions Part 1

Format	Color
Hex	5E472F
RGB	94, 71, 47
RGB Percent	37%, 28%, 18%
CMY	0.6314, 0.7216, 0.8157
CMYK	0.00, 0.24, 0.50, 0.63
HSL	31°, 33%, 28%
HSV	31°, 50%, 37%
XYZ	7.3824, 7.0914, 3.6690
YIQ	75.1410, 21.4120, -2.5880

Conversions

Conversions Part 2

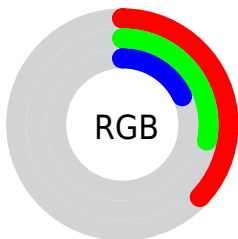
Format	Color
RYB	92, 94, 47
Decimal	6178607
CIELab	32.01, 6.37, 18.18
CIELCh	32, 19.269, 70.685
Yxy	7.0917, 0.4069, 0.3909
Android (android.graphics.Color)	4284368687 (0xFF5E472F)
YUV	75.1410, -13.8735, 16.5393
Hunter-Lab	26.6297, 2.8828, 10.4719

Details

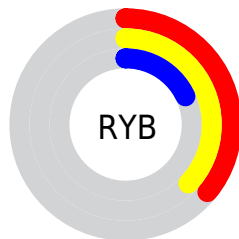
The HunterLab color **26.6297, 2.8828, 10.4719** is a dark color, and the websafe version is hex **663333**. A complement of this color would be **24.0678, -2.1972, -11.2953**, and the grayscale version is **26.6191, -1.4203, 1.4463**.

A 20% lighter version of the original color is **44.8274, 2.8898, 13.9760**, and **11.9785, 2.6947, 7.4283** is the 20% darker color. If you saturate the color by 10%, you get **25.4181, 4.1946, 11.5369**, and if you desaturate by 10%, it is **27.8987, 1.7025, 9.1601**.

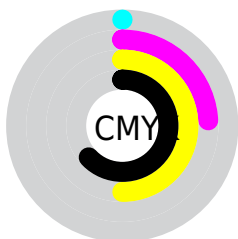
Distribution



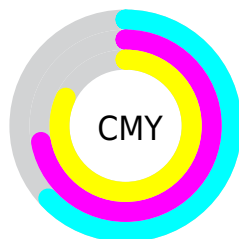
- Red (37%)
- Green (28%)
- Blue (18%)



- Red (36%)
- Yellow (37%)
- Blue (18%)



- Cyan (0%)
- Magenta (24%)
- Yellow (50%)
- Black (63%)



- Cyan (63%)
- Magenta (72%)
- Yellow (82%)

Brightness & Saturation Gradients

These gradients show how the HunterLab color 26.6297, 2.8828, 10.4719 changes by changing the brightness by 10 percent. The first figure shows a shift by +10% for each color and the second figure -10%.

Similar to the brightness gradients but the following saturation gradients show a change of the HunterLab color 26.6297, 2.8828, 10.4719 by changing the saturation by 10% instead.

■ 26.6297, 2.8828,
10.4719

■ 26.6297, 2.8828,
10.4719

■ 129.7782, 0.2214,
24.8411

■ 18.7605, 2.8585,
8.5635

■ 44.8972, 2.6788,
13.9446

■ 11.8685, 2.7258,
7.4240

■ 55.1543, 2.4763,
15.5787

■ 4.7229, 5.6282,
3.3060

■ 66.0917, 2.2169,
17.1714

0.0000, NaN, NaN

0.0000, NaN, NaN

■ 77.6696, 1.9059,
18.7349

0.0000, NaN, NaN

■ 89.8542, 1.5476,
20.2779

0.0000, NaN, NaN

0.0000, NaN, NaN

■ 102.6167, 1.1456,

115.9321, 0.7027,
23.3267

■ 26.6297, 2.8828,
10.4719

■ 26.6297, 2.8828,
10.4719

■ 25.4181, 4.1946,
11.5369

■ 27.8987, 1.7025,
9.1601

■ 24.2661, 5.6428,
12.3363

■ 29.2192, 0.6528,
7.6198

■ 23.1787, 7.2237,
12.8558

■ 30.5879, -0.2736,
5.8706

■ 22.1599, 8.9286,
13.0888

■ 32.0014, -1.0837,
3.9308

■ 21.1991, 10.6715,
13.2495

■ 33.4564, -1.7852,
1.8176

■ 21.1990, 10.6716,
13.2495

■ 34.9501, -2.3856,
-0.4534

■ 36.4797, -2.8924,
-2.8681

■ 38.0428, -3.3127,
-5.4137

■ 39.6373, -3.6532,
-8.0790

Harmonies

Analogous

The Analogous color harmony consists of three colors that are next to each other on the color wheel.



26.6303, 8.8388, 8.1480



26.6297, 2.8828, 10.4719



26.6303, -3.7219, 10.7537

Triad

The Triadic color harmony groups three colors that are evenly spaced from another and form a triangle on the color wheel.



26.6303, 2.8817, 10.4722



26.6303, -12.7232, -0.8736



26.6303, 7.3137, -9.3550

Complementary

The Complementary color scheme is a pair of colors which are on the opposite of each other on the color wheel.



26.6297, 2.8828, 10.4719



24.0678, -2.1972, -11.2953

Split Complementary

Split-complementary colors differ from the complementary color scheme. The scheme consists of three colors, the original color and two neighbors of the complement color.



26.6303, 0.9580, -13.2509



26.6297, 2.8828, 10.4719



26.6303, -10.3322, -7.6238

Square

The Square scheme is like the rectangle color scheme, but the four colors are evenly spaced on the color wheel.



26.6303, 2.8817, 10.4722



26.6303, -12.3159, 5.1225



26.6303, -5.4693, -12.5502



26.6303, 11.5640, -2.8348

Rectangle

The Rectangle color scheme consists of four colors that form a rectangle on the color wheel.



26.6297, 2.8828, 10.4719



26.6303, -7.5612, 9.8448



26.6303, -5.4693, -12.5502



26.6303, 5.3284, -11.0788

Sweetspot

The Sweet Spot groups the original color and five complimentary colors.



26.6303, 2.8817, 10.4722



41.3164, -0.8665, 6.6345



22.0484, 16.0945, -1.9372



20.1004, -0.3515, 3.4171



71.2094, -3.7996, 3.8689



21.6712, -1.1563, 1.1774

Same Dimension

The Same Dimension uses a secret algorithm to generate beautiful new colors.



26.6303, 2.8817, 10.4722



33.3441, 5.8942, 15.4908



32.5428, -6.8606, 15.0328



15.8634, -0.5785, 1.8178



24.7399, 12.9895, 15.4720



56.3310, 33.9574, 35.3054

Inverse Universe

The Inverse Universe completely reimagines the original color for something new.



24.0678, -2.1972, -11.2953



29.2362, -2.0594, -19.6246



18.5623, 7.9932, -22.2466



15.6293, -1.0573, -0.1540



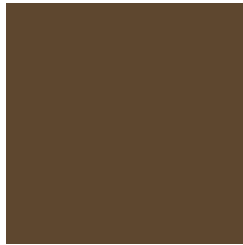
19.2985, 4.1365, -33.0510



43.1547, 13.6495, -83.4048

Previews

White Background



This preview shows how the HunterLab color 26.6297, 2.8828, 10.4719 looks on a white background.

Color Contrast Check

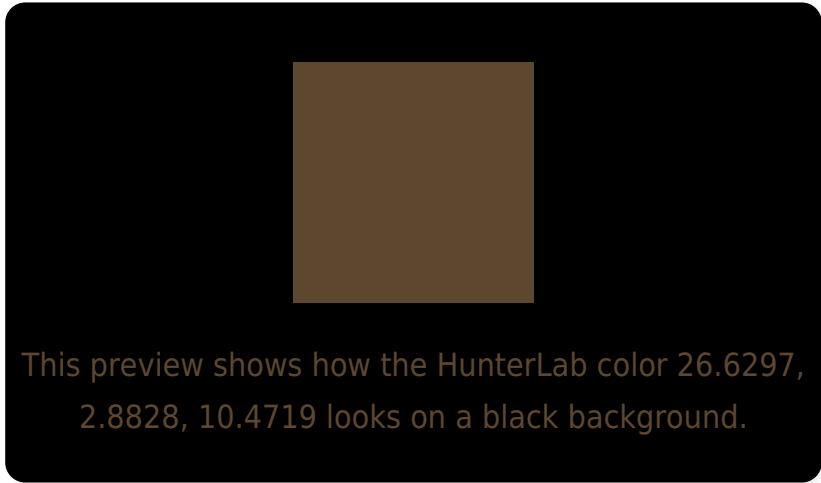
Large Text (above 18pt) WCAG AA ✓ Pass

Any Text WCAG AA ✓ Pass

Large Text (above 18pt) WCAG AAA ✓ Pass

Any Text WCAG AAA ✓ Pass

Black Background



Color Contrast Check

Large Text (above 18pt) WCAG AA × Fail

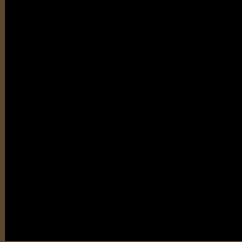
Any Text WCAG AA × Fail

Large Text (above 18pt) WCAG AAA × Fail

Any Text WCAG AAA × Fail

If you want to check with other color combinations, try the [Color Contrast Checker](#).

HunterLab 26.6297, 2.8828, 10.4719 Background



This preview shows how black text looks on a background with the HunterLab color 26.6297, 2.8828, 10.4719.

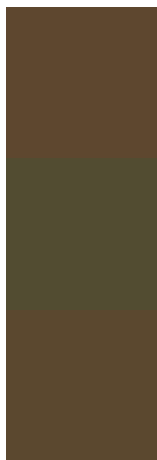


This preview shows how white text looks on a background with the HunterLab color 26.6297, 2.8828,

Color Blindness Simulation

Color vision deficiency is a very complex topic, and I could not describe the different causes any better than Wikipedia does, so if you want to learn more, you should check out their [article about color blindness](#).

Dichromacy



Original Color

26.6297, 2.8828, 10.4719

Protanopia

26.8039, -2.8310, 10.0394

Deuteranopia

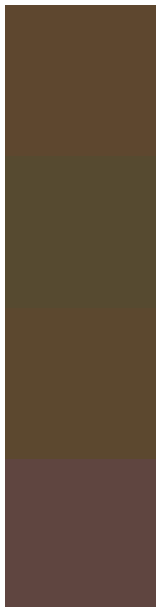
26.5784, 1.4724, 10.4040



Tritanopia

26.6497, 7.5739, 2.5305

Trichromacy



Original Color

26.6297, 2.8828, 10.4719

Protanomaly

26.6259, -0.8739, 10.1647

Deuteranomaly

26.6745, 1.7956, 10.4905

Tritanomaly

26.5694, 5.7237, 5.6482

Monochromacy



Original Color

26.6297, 2.8828, 10.4719

Achromatopsia

26.5255, -1.4153, 1.4412

Achromatomaly

26.5952, -0.3475, 5.2327

CSS Examples

Text

The CSS property to change the color of the text to HunterLab 26.6297, 2.8828, 10.4719 is called "color". The color property can be set on classes, ids or directly on the HTML element.

This example shows how text in the color `rgb(94, 71, 47)` looks like.

```
.text, #text, p{  
    color:rgb(94, 71, 47)  
}
```

If you want to add a text shadow in that color use the text-shadow property, you can generate a text shadow directly with our [CSS Text Shadow Generator](#).

Here you see how black text with a 4 pixel rgb(94, 71, 47) colored shadow looks like.

```
.shadow{ text-shadow: 4px 4px 2px rgb(94, 71, 47) }
```

Border

The CSS property to change the border of an element to HunterLab 26.6297, 2.8828, 10.4719 is called "border". The border property can be set on classes, ids or directly on the HTML element.

This example shows the color as border, it can be applied via the CSS property "border" or "border-color".

```
.border, #border, table{ border:4px solid rgb(94, 71, 47) }
```


If only the border color should be changed use the property border-color.

```
.border{ border-color:rgb(94, 71, 47) }
```

If you want to add a box shadow in that color use:

Here you see how a box with a 4 pixel rgb(94, 71, 47) colored shadow looks like.

```
.boxshadow{ -moz-box-shadow:4px 4px 4px  
4px rgb(94, 71, 47); -webkit-box-  
shadow:4px 4px 4px 4px rgb(94, 71, 47);  
box-shadow:4px 4px 4px 4px rgb(94, 71, 47)  
}
```

Background

The CSS property to change the background color of an element to HunterLab 26.6297, 2.8828, 10.4719 is called "background". The background property can be set on classes, ids or directly on the HTML element.

```
.background, #background, body{  
background: rgb(94, 71, 47) }
```

If only the background color should be changed can be used:

```
.background{ background-color: rgb(94, 71,  
47) }
```

This example shows the color as background, it is applied via the CSS property "background".

To optimize and compress your CSS code, you can use our [online CSS compressor and optimizer](#) based on csstidy. If you want to create a linear or radial gradient as background or border, check our [CSS Gradient Generator](#).

Hey! You found this booklet interesting? Support Converting Colors with the new Membership Option!

The pro membership hides all ads, plus gives you double the colors in the color bucket, and more awesome pro features!

[Learn more, Memberships starting at \\$2.50/m!](#)

**Follow me
on Twitter!**

@ConvertingColor