

Converting Colors

HunterLab(26.7792, 2.6721,
6.5786)

Have a look what the booklet for
HunterLab(26.7792, 2.6721, 6.5786)
contains.

HunterLab(26.7511, 2.5853, 6.4282)	3
<i>Conversions</i>	4
<i>Details</i>	6
<i>Harmonies</i>	12
<i>Previews</i>	24
<i>Color Blindness Simulation</i>	28
<i>CSS Examples</i>	31

Color

**HunterLab(26.7511, 2.5853,
6.4282)**

Conversions

Conversions Part 1

Format	Color
Hex	5A483E
RGB	90, 72, 62
RGB Percent	35%, 28%, 24%
CMY	0.6471, 0.7176, 0.7569
CMYK	0.00, 0.20, 0.31, 0.65
HSL	21°, 18%, 30%
HSV	21°, 31%, 35%
XYZ	7.4033, 7.1562, 5.5485
YIQ	76.2420, 13.9380, 0.7060

Conversions

Conversions Part 2

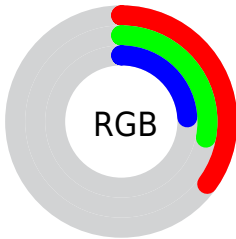
Format	Color
R_{YB}	90, 78, 62
Decimal	5916734
CIE Lab	32.16, 5.95, 8.89
CIE LCh	32, 10.692, 56.211
Yxy	7.1565, 0.3682, 0.3559
Android (android.graphics.Color)	4284106814 (0xFF5A483E)
YUV	76.2420, -7.0213, 12.0658
Hunter-Lab	26.7511, 2.5853, 6.4282

Details

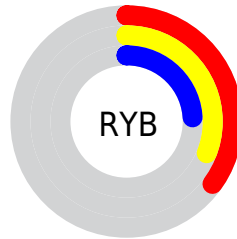
The HunterLab color **26.7511, 2.5853, 6.4282** is a dark color, and the websafe version is hex **333333**. A complement of this color would be **27.3852, -4.2480, -4.1420**, and the grayscale version is **26.9916, -1.4402, 1.4665**.

A 20% lighter version of the original color is **44.9683, 2.7409, 8.3071**, and **12.0118, 2.1898, 4.1732** is the 20% darker color. If you saturate the color by 10%, you get **25.2044, 4.1926, 7.6808**, and if you desaturate by 10%, it is **28.3677, 1.0929, 5.0396**.

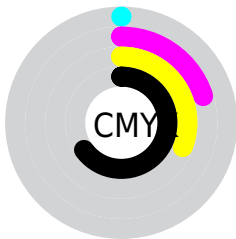
Distribution



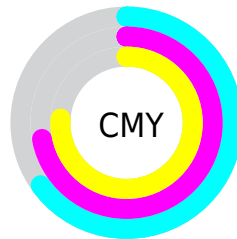
- Red (35%)
- Green (28%)
- Blue (24%)



- Red (35%)
- Yellow (31%)
- Blue (24%)



- Cyan (0%)
- Magenta (20%)
- Yellow (31%)
- Black (65%)



- Cyan (65%)
- Magenta (72%)
- Yellow (76%)

Brightness & Saturation Gradients

These gradients show how the HunterLab color 26.7511, 2.5853, 6.4282 changes by changing the brightness by 10 percent. The first figure shows a shift by +10% for each color and the second figure -10%.

Similar to the brightness gradients but the following saturation gradients show a change of the HunterLab color 26.7511, 2.5853, 6.4282 by changing the saturation by 10% instead.

■ 26.7511, 2.5853,
6.4282

■ 26.7511, 2.5853,
6.4282

■ 129.9839, -0.2702,
16.1205

■ 18.8685, 2.5911,
5.3260

■ 45.0416, 2.3289,
8.5617

■ 11.9613, 2.4921,
4.1865

■ 55.3089, 2.1029,
9.6186

■ 4.8908, 5.0369,
3.4236

■ 66.2560, 1.8213,
10.6782

0.0000, NaN, NaN

0.0000, NaN, NaN

■ 77.8429, 1.4893,
11.7447

0.0000, NaN, NaN

■ 90.0362, 1.1111,
12.8205

0.0000, NaN, NaN

0.0000, NaN, NaN

■ 102.8069, 0.6899,

116.1302, 0.2287,
15.0073

■ 26.7511, 2.5853,
6.4282

■ 26.7511, 2.5853,
6.4282

■ 25.2044, 4.1926,
7.6808

■ 28.3677, 1.0929,
5.0396

■ 23.7334, 5.9223,
8.7750

■ 30.0456, -0.2890,
3.5321

■ 22.3473, 7.7740,
9.6875

■ 31.7796, -1.5698,
1.9218

■ 21.0556, 9.7412,
10.3928

■ 33.5645, -2.7581,
0.2217

■ 19.8683, 11.8073,
10.8668

■ 35.3958, -3.8625,
-1.5572

■ 18.7952, 13.9388,
11.1008

■ 37.2698, -4.8910,
-3.4060

■ 17.9297, 15.7825,
11.3245

■ 39.1829, -5.8513,
-5.3170

■ 41.1323, -6.7501,
-7.2839

■ 43.1154, -7.5935,
-9.3014

Harmonies

Analogous

The Analogous color harmony consists of three colors that are next to each other on the color wheel.



26.7517, 5.1586, 4.2384



26.7511, 2.5853, 6.4282



26.7517, -0.9638, 7.2944

Triad

The Triadic color harmony groups three colors that are evenly spaced from another and form a triangle on the color wheel.



26.7517, 2.5843, 6.4286



26.7517, -8.0733, 1.8933



26.7517, 1.7397, -5.2475

Complementary

The Complementary color scheme is a pair of colors which are on the opposite of each other on the color wheel.



26.7511, 2.5853, 6.4282



27.3852, -4.2480, -4.1420

Split Complementary

Split-complementary colors differ from the complementary color scheme. The scheme consists of three colors, the original color and two neighbors of the complement color.



26.7517, -1.8908, -6.0928



26.7511, 2.5853, 6.4282



26.7517, -7.4347, -1.6612

Square

The Square scheme is like the rectangle color scheme, but the four colors are evenly spaced on the color wheel.



26.7517, 2.5843, 6.4286



26.7517, -7.0115, 4.9071



26.7517, -5.2185, -4.7030



26.7517, 4.6529, -2.5262

Rectangle

The Rectangle color scheme consists of four colors that form a rectangle on the color wheel.



26.7511, 2.5853, 6.4282



26.7517, -3.3587, 7.1030



26.7517, -5.2185, -4.7030



26.7517, 0.5573, -5.7749

Sweetspot

The Sweet Spot groups the original color and five complimentary colors.



26.7517, 2.5843, 6.4286



40.1522, -0.7000, 4.2940



24.9022, 9.4257, -2.6528



19.6323, -0.2612, 2.2103



70.1359, -3.7423, 3.8106



20.7927, -1.1094, 1.1297

Same Dimension

The Same Dimension uses a secret algorithm to generate beautiful new colors.



26.7517, 2.5843, 6.4286



33.9230, 4.9096, 9.6971



30.2411, -3.3529, 9.6403



15.6999, -0.3027, 1.6391



21.8053, 20.1094, 13.7883



49.4795, 51.2235, 31.3858

Inverse Universe

The Inverse Universe completely reimagines the original color for something new.



27.3852, -4.2480, -4.1420



34.9372, -6.0825, -7.2961



23.8375, 1.6567, -9.3414



15.7959, -1.3305, 0.0469



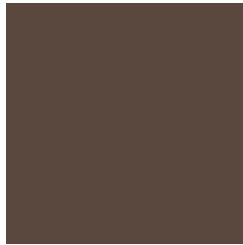
23.5776, -3.2869, -22.3745



53.5929, -5.1672, -55.8319

Previews

White Background



This preview shows how the HunterLab color 26.7511, 2.5853, 6.4282 looks on a white background.

Color Contrast Check

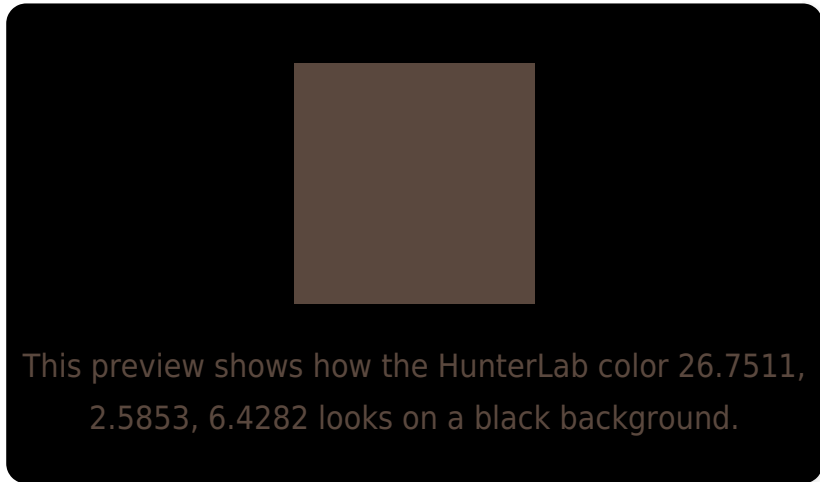
Large Text (above 18pt) WCAG AA ✓ Pass

Any Text WCAG AA ✓ Pass

Large Text (above 18pt) WCAG AAA ✓ Pass

Any Text WCAG AAA ✓ Pass

Black Background



Color Contrast Check

Large Text (above 18pt) WCAG AA × Fail

Any Text WCAG AA × Fail

Large Text (above 18pt) WCAG AAA × Fail

Any Text WCAG AAA × Fail

If you want to check with other color combinations, try the [Color Contrast Checker](#).

HunterLab 26.7511, 2.5853, 6.4282 Background



This preview shows how black text looks on a background with the HunterLab color 26.7511, 2.5853, 6.4282.

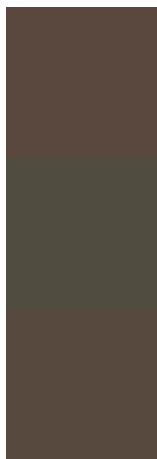


This preview shows how white text looks on a background with the HunterLab color 26.7511, 2.5853,

Color Blindness Simulation

Color vision deficiency is a very complex topic, and I could not describe the different causes any better than Wikipedia does, so if you want to learn more, you should check out their [article about color blindness](#).

Dichromacy



Original Color

26.7511, 2.5853, 6.4282

Protanopia

26.9156, -1.8858, 5.8676

Deuteranopia

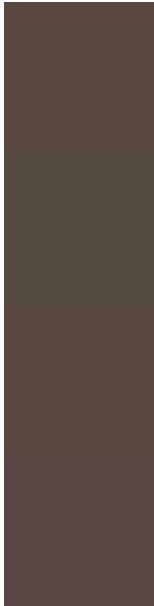
26.8097, 1.5306, 6.4680



Tritanopia

26.6692, 5.3648, 1.7286

Trichromacy



Original Color

26.7511, 2.5853, 6.4282

Protanomaly

26.9738, -0.4219, 6.2771

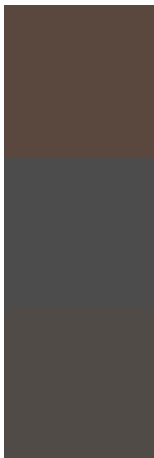
Deuteranomaly

26.9012, 1.8382, 6.5640

Tritanomaly

26.7821, 4.2718, 3.7503

Monochromacy



Original Color

26.7511, 2.5853, 6.4282

Achromatopsia

26.8834, -1.4344, 1.4606

Achromatomaly

26.9006, -0.3170, 3.4317

CSS Examples

Text

The CSS property to change the color of the text to HunterLab 26.7511, 2.5853, 6.4282 is called "color". The color property can be set on classes, ids or directly on the HTML element.

This example shows how text in the color `rgb(90, 72, 62)` looks like.

```
.text, #text, p{  
    color:rgb(90, 72, 62)  
}
```

If you want to add a text shadow in that color use the text-shadow property, you can generate a text shadow directly with our [CSS Text Shadow Generator](#).

Here you see how black text with a 4 pixel rgb(90, 72, 62) colored shadow looks like.

```
.shadow{ text-shadow: 4px 4px 2px rgb(90, 72, 62) }
```

Border

The CSS property to change the border of an element to HunterLab 26.7511, 2.5853, 6.4282 is called "border".

The border property can be set on classes, ids or directly on the HTML element.

This example shows the color as border, it can be applied via the CSS property "border" or "border-color".

```
.border, #border, table{ border:4px solid rgb(90, 72, 62) }
```


If only the border color should be changed use the property `border-color`.

```
.border{ border-color:rgb(90, 72, 62) }
```

If you want to add a box shadow in that color use:

Here you see how a box with a 4 pixel `rgb(90, 72, 62)` colored shadow looks like.

```
.boxshadow{ -moz-box-shadow:4px 4px 4px  
4px rgb(90, 72, 62); -webkit-box-  
shadow:4px 4px 4px 4px rgb(90, 72, 62);  
box-shadow:4px 4px 4px 4px rgb(90, 72, 62)  
}
```

Background

The CSS property to change the background color of an element to HunterLab 26.7511, 2.5853, 6.4282 is called "background". The background property can be set on classes, ids or directly on the HTML element.

```
.background, #background, body{  
background: rgb(90, 72, 62) }
```

If only the background color should be changed can be used:

```
.background{ background-color: rgb(90, 72,  
62) }
```

This example shows the color as background, it is applied via the CSS property "background".

To optimize and compress your CSS code, you can use our [online CSS compressor and optimizer](#) based on csstidy. If you want to create a linear or radial gradient as background or border, check our [CSS Gradient Generator](#).

Hey! You found this booklet interesting? Support Converting Colors with the new Membership Option!

The pro membership hides all ads, plus gives you double the colors in the color bucket, and more awesome pro features!

[Learn more, Memberships starting at \\$2.50/m!](#)

**Follow me
on Twitter!**

@ConvertingColor