

Converting Colors

HunterLab(26.7794, 4.4376,
2.3467)

Have a look what the booklet for
HunterLab(26.7794, 4.4376, 2.3467)
contains.

HunterLab(26.7853, 4.4773, 2.2429)	3
<i>Conversions</i>	4
<i>Details</i>	6
<i>Harmonies</i>	12
<i>Previews</i>	24
<i>Color Blindness Simulation</i>	28
<i>CSS Examples</i>	31

Color

**HunterLab(26.7853, 4.4773,
2.2429)**

Conversions

Conversions Part 1

Format	Color
Hex	5A474A
RGB	90, 71, 74
RGB Percent	35%, 28%, 29%
CMY	0.6471, 0.7216, 0.7098
CMYK	0.00, 0.21, 0.18, 0.65
HSL	351°, 12%, 32%
HSV	351°, 21%, 35%
XYZ	7.7057, 7.1745, 7.4572
YIQ	77.0230, 10.3610, 4.9610

Conversions

Conversions Part 2

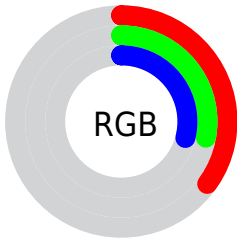
Format	Color
RYB	90, 71, 74
Decimal	5916490
CIELab	32.20, 8.64, 1.28
CIElCh	32, 8.732, 8.414
Yxy	7.1748, 0.3450, 0.3212
Android (android.graphics.Color)	4284106570 (0xFF5A474A)
YUV	77.0230, -1.4903, 11.3808
Hunter-Lab	26.7853, 4.4773, 2.2429

Details

The HunterLab color **26.7853, 4.4773, 2.2429** is a dark color, and the websafe version is hex **333333**. A complement of this color would be **30.5617, -6.9025, 1.2176**, and the grayscale version is **27.2535, -1.4542, 1.4807**.

A 20% lighter version of the original color is **44.9435, 4.7028, 3.0557**, and **12.0819, 3.8000, 1.4836** is the 20% darker color. If you saturate the color by 10%, you get **24.5306, 7.5353, 2.6320**, and if you desaturate by 10%, it is **29.1790, 1.4997, 1.9557**.

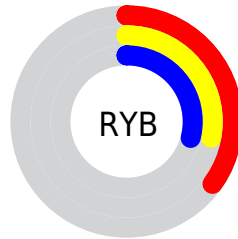
Distribution



 Red (35%)

 Green (28%)

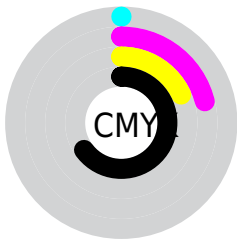
 Blue (29%)



 Red (35%)

 Yellow (28%)

 Blue (29%)

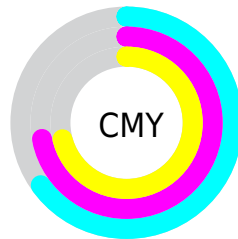


 Cyan (0%)

 Magenta (21%)

 Yellow (18%)

 Black (65%)



 Cyan (65%)

 Magenta (72%)

 Yellow (71%)

Brightness & Saturation Gradients

These gradients show how the HunterLab color 26.7853, 4.4773, 2.2429 changes by changing the brightness by 10 percent. The first figure shows a shift by +10% for each color and the second figure -10%.

Similar to the brightness gradients but the following saturation gradients show a change of the HunterLab color 26.7853, 4.4773, 2.2429 by changing the saturation by 10% instead.

■ 26.7853, 4.4773,
2.2429

■ 26.7853, 4.4773,
2.2429

130.0418, 2.7919,
8.4217

■ 18.8989, 4.3060,
1.7250

■ 45.0823, 4.5345,
3.3924

■ 11.9874, 4.0107,
1.2467

■ 55.3525, 4.4498,
4.0192

■ 4.9370, 7.3603,
1.3415

■ 66.3023, 4.3017,
4.6788

0.0000, NaN, NaN

0.0000, NaN, NaN

■ 77.8917, 4.0963,
5.3696

0.0000, NaN, NaN

■ 90.0874, 3.8389,
6.0904

0.0000, NaN, NaN

102.8605, 3.5336,

0.0000, NaN, NaN

116.1859, 3.1836,
7.6175

■ 26.7853, 4.4773,
2.2429

■ 26.7853, 4.4773,
2.2429

■ 24.5306, 7.5353,
2.6320

■ 29.1790, 1.4997,
1.9557

■ 22.4370, 10.6565,
3.1353

■ 31.6903, -1.3908,
1.7548

■ 20.5342, 13.7930,
3.7638

■ 34.3040, -4.1994,
1.6279

■ 18.8556, 16.8566,
4.5192

■ 37.0075, -6.9342,
1.5637

■ 17.4372, 19.7055,
5.3866

■ 39.7902, -9.6047,
1.5529

■ 16.3126, 22.1481,
6.3262

■ 42.6438, -12.2201,
1.5875

■ 15.4962, 24.0047,
7.2650

■ 45.5613, -14.7892,
1.6612

■ 14.8524, 25.6524,
7.9134

■ 48.5370, -17.3196,
1.7684

■ 51.5659, -19.8181,
1.9049

Harmonies

Analogous

The Analogous color harmony consists of three colors that are next to each other on the color wheel.



26.7859, 4.1082, -0.6258



26.7853, 4.4773, 2.2429



26.7859, 3.2084, 4.6284

Triad

The Triadic color harmony groups three colors that are evenly spaced from another and form a triangle on the color wheel.



26.7859, 4.4764, 2.2434



26.7859, -4.8986, 5.3869



26.7859, -3.5062, -4.1216

Complementary

The Complementary color scheme is a pair of colors which are on the opposite of each other on the color wheel.



26.7853, 4.4773, 2.2429



30.5617, -6.9025, 1.2176

Split Complementary

Split-complementary colors differ from the complementary color scheme. The scheme consists of three colors, the original color and two neighbors of the complement color.



26.7859, -5.7740, -2.1545



26.7853, 4.4773, 2.2429



26.7859, -6.5531, 3.3868

Square

The Square scheme is like the rectangle color scheme, but the four colors are evenly spaced on the color wheel.



26.7859, 4.4764, 2.2434



26.7859, -2.2639, 6.3090



26.7859, -6.8664, 0.6482



26.7859, -0.5871, -4.5138

Rectangle

The Rectangle color scheme consists of four colors that form a rectangle on the color wheel.



26.7853, 4.4773, 2.2429



26.7859, 1.6371, 5.6980



26.7859, -6.8664, 0.6482



26.7859, -4.3663, -3.6131

Sweetspot

The Sweet Spot groups the original color and five complimentary colors.



26.7859, 4.4764, 2.2434



40.2084, 0.0907, 2.4429



26.9503, 5.9150, -4.5699



19.7133, 0.1076, 1.2054



70.1359, -3.7423, 3.8106



20.7927, -1.1094, 1.1297

Same Dimension

The Same Dimension uses a secret algorithm to generate beautiful new colors.



26.7859, 4.4764, 2.2434



34.0020, 7.8102, 3.1911



28.2549, 1.2914, 4.9233



15.3406, 0.4335, 0.9819



18.2593, 31.4965, 10.0398



42.6223, 73.3117, 25.0632

Inverse Universe

The Inverse Universe completely reimagines the original color for something new.



26.7859, 4.4764, 2.2434



34.0020, 7.8102, 3.1911



28.9258, -3.7903, -2.0692



15.3406, 0.4335, 0.9819



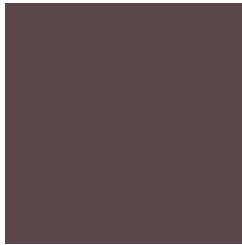
18.2593, 31.4965, 10.0398



42.6223, 73.3117, 25.0632

Previews

White Background



This preview shows how the HunterLab color 26.7853, 4.4773, 2.2429 looks on a white background.

Color Contrast Check

Large Text (above 18pt) WCAG AA ✓ Pass

Any Text WCAG AA ✓ Pass

Large Text (above 18pt) WCAG AAA ✓ Pass

Any Text WCAG AAA ✓ Pass

Black Background



This preview shows how the HunterLab color 26.7853, 4.4773, 2.2429 looks on a black background.

Color Contrast Check

Large Text (above 18pt) WCAG AA × Fail

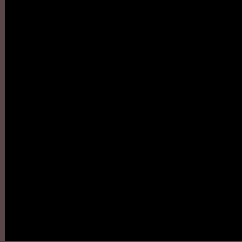
Any Text WCAG AA × Fail

Large Text (above 18pt) WCAG AAA × Fail

Any Text WCAG AAA × Fail

If you want to check with other color combinations, try the [Color Contrast Checker](#).

HunterLab 26.7853, 4.4773, 2.2429 Background



This preview shows how black text looks on a background with the HunterLab color 26.7853, 4.4773, 2.2429.

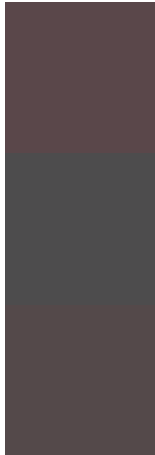


This preview shows how white text looks on a background with the HunterLab color 26.7853, 4.4773,

Color Blindness Simulation

Color vision deficiency is a very complex topic, and I could not describe the different causes any better than Wikipedia does, so if you want to learn more, you should check out their [article about color blindness](#).

Dichromacy



Original Color

26.7853, 4.4773, 2.2429

Protanopia

26.9861, -1.0261, 1.1848

Deuteranopia

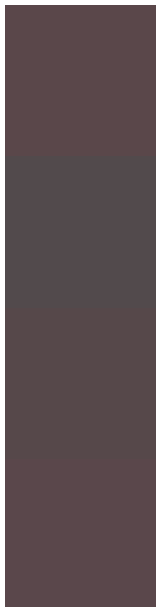
26.7289, 1.8064, 2.1311



Tritanopia

26.8364, 4.7456, 1.5135

Trichromacy



Original Color

26.7853, 4.4773, 2.2429

Protanomaly

26.8574, 1.0713, 1.4738

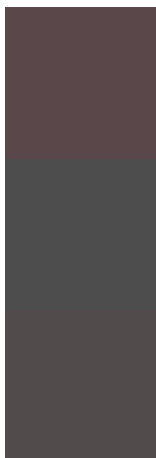
Deuteranomaly

26.6600, 2.8317, 2.0695

Tritanomaly

26.8107, 4.6105, 1.8807

Monochromacy



Original Color

26.7853, 4.4773, 2.2429

Achromatopsia

27.2422, -1.4536, 1.4801

Achromatomaly

27.1068, 0.6357, 1.7588

CSS Examples

Text

The CSS property to change the color of the text to HunterLab 26.7853, 4.4773, 2.2429 is called "color". The color property can be set on classes, ids or directly on the HTML element.

This example shows how text in the color `rgb(90, 71, 74)` looks like.

```
.text, #text, p{  
    color:rgb(90, 71, 74)  
}
```

If you want to add a text shadow in that color use the text-shadow property, you can generate a text shadow directly with our [CSS Text Shadow Generator](#).

Here you see how black text with a 4 pixel rgb(90, 71, 74) colored shadow looks like.

```
.shadow{ text-shadow: 4px 4px 2px rgb(90, 71, 74) }
```

Border

The CSS property to change the border of an element to HunterLab 26.7853, 4.4773, 2.2429 is called "border".

The border property can be set on classes, ids or directly on the HTML element.

This example shows the color as border, it can be applied via the CSS property "border" or "border-color".

```
.border, #border, table{ border:4px solid rgb(90, 71, 74) }
```


If only the border color should be changed use the property border-color.

```
.border{ border-color:rgb(90, 71, 74) }
```

If you want to add a box shadow in that color use:

Here you see how a box with a 4 pixel rgb(90, 71, 74) colored shadow looks like.

```
.boxshadow{ -moz-box-shadow:4px 4px 4px  
4px rgb(90, 71, 74); -webkit-box-  
shadow:4px 4px 4px 4px rgb(90, 71, 74);  
box-shadow:4px 4px 4px 4px rgb(90, 71, 74)  
}
```

Background

The CSS property to change the background color of an element to HunterLab 26.7853, 4.4773, 2.2429 is called "background". The background property can be set on classes, ids or directly on the HTML element.

```
.background, #background, body{  
background: rgb(90, 71, 74) }
```

If only the background color should be changed can be used:

```
.background{ background-color: rgb(90, 71,  
74) }
```

This example shows the color as background, it is applied via the CSS property "background".

To optimize and compress your CSS code, you can use our [online CSS compressor and optimizer](#) based on csstidy. If you want to create a linear or radial gradient as background or border, check our [CSS Gradient Generator](#).

Hey! You found this booklet interesting? Support Converting Colors with the new Membership Option!

The pro membership hides all ads, plus gives you double the colors in the color bucket, and more awesome pro features!

[Learn more, Memberships starting at \\$2.50/m!](#)

**Follow me
on Twitter!**

@ConvertingColor