

Converting Colors

HunterLab(27.0326, 6.4788,
2.5615)

Have a look what the booklet for
HunterLab(27.0326, 6.4788, 2.5615)
contains.

HunterLab(27.0326, 6.4788, 2.5615)	3
<i>Conversions</i>	4
<i>Details</i>	6
<i>Harmonies</i>	12
<i>Previews</i>	24
<i>Color Blindness Simulation</i>	28
<i>CSS Examples</i>	31

Color

**HunterLab(27.0326, 6.4788,
2.5615)**

Conversions

Conversions Part 1

Format	Color
Hex	5F464A
RGB	95, 70, 74
RGB Percent	37%, 27%, 29%
CMY	0.6275, 0.7255, 0.7098
CMYK	0.00, 0.26, 0.22, 0.63
HSL	350°, 15%, 32%
HSV	350°, 26%, 37%
XYZ	8.1455, 7.3076, 7.4598
YIQ	77.9310, 13.6160, 6.5440

Conversions

Conversions Part 2

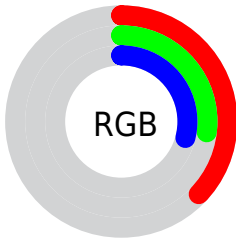
Format	Color
R_{YB}	95, 70, 74
Decimal	6243914
CIE _{Lab}	32.50, 11.40, 1.78
CIE _{LCh}	32, 11.540, 8.869
Yxy	7.3080, 0.3555, 0.3189
Android (android.graphics.Color)	4284433994 (0xFF5F464A)
YUV	77.9310, -1.9380, 14.9695
Hunter-Lab	27.0326, 6.4788, 2.5615

Details

The HunterLab color $[27.0326, 6.4788, 2.5615]$ is a dark color, and the websafe version is hex 663333 . A complement of this color would be $[32.0031, -8.5592, 1.2330]$, and the grayscale version is $[27.5807, -1.4716, 1.4985]$.

A 20% lighter version of the original color is $[45.2746, 7.1426, 3.4833]$, and $[12.0868, 5.7655, 1.5235]$ is the 20% darker color. If you saturate the color by 10%, you get $[24.7206, 9.7792, 3.0346]$, and if you desaturate by 10%, it is $[29.5069, 3.2555, 2.2065]$.

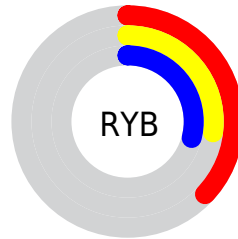
Distribution




 Red (37%)

 Green (27%)

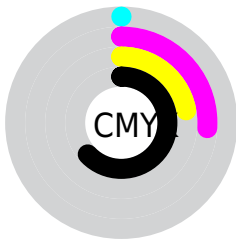
 Blue (29%)



 Red (37%)

 Yellow (27%)

 Blue (29%)

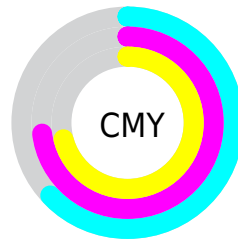


 Cyan (0%)

 Magenta (26%)

 Yellow (22%)

 Black (63%)



 Cyan (63%)

 Magenta (73%)

 Yellow (71%)

Brightness & Saturation Gradients

These gradients show how the HunterLab color 27.0326, 6.4788, 2.5615 changes by changing the brightness by 10 percent. The first figure shows a shift by +10% for each color and the second figure -10%.

Similar to the brightness gradients but the following saturation gradients show a change of the HunterLab color 27.0326, 6.4788, 2.5615 by changing the saturation by 10% instead.

■ 27.0326, 6.4788,
2.5615

■ 27.0326, 6.4788,
2.5615

■ 130.4602, 5.9583,
8.9699

■ 19.1192, 6.1353,
2.0069

■ 45.3763, 6.8444,
3.7741

■ 12.1768, 5.6531,
1.4862

■ 55.6673, 6.9001,
4.4289

■ 5.2587, 9.1672,
1.6887

■ 66.6366, 6.8849,
5.1146

0.0000, NaN, NaN

0.0000, NaN, NaN

■ 78.2445, 6.8061,
5.8301

0.0000, NaN, NaN

■ 90.4576, 6.6697,
6.5743

0.0000, NaN, NaN

103.2474, 6.4804,

0.0000, NaN, NaN

116.5889, 6.2421,
8.1451

■ 27.0326, 6.4788,
2.5615

■ 27.0326, 6.4788,
2.5615

■ 24.7206, 9.7792,
3.0346

■ 29.5069, 3.2555,
2.2065

■ 22.5979, 13.1238,
3.6381

■ 32.1179, 0.1246,
1.9527

■ 20.6992, 16.4383,
4.3799

■ 34.8473, -2.9156,
1.7856

■ 19.0625, 19.5959,
5.2534

■ 37.6797, -5.8719,
1.6922

■ 17.7262, 22.4107,
6.2286

■ 40.6025, -8.7541,
1.6612

■ 16.7210, 24.6592,
7.2455

■ 43.6057, -11.5725,
1.6832

■ 15.9783, 26.4166,
8.1630

■ 46.6811, -14.3366,
1.7505

■ 15.7097, 27.1265,
8.4220

■ 49.8217, -17.0554,
1.8567

■ 53.0219, -19.7368,
1.9966

Harmonies

Analogous

The Analogous color harmony consists of three colors that are next to each other on the color wheel.



27.0332, 6.0122, -1.2651



27.0326, 6.4788, 2.5615



27.0332, 4.7278, 5.6245

Triad

The Triadic color harmony groups three colors that are evenly spaced from another and form a triangle on the color wheel.



27.0332, 6.4778, 2.5620



27.0332, -6.0473, 6.5144



27.0332, -4.1280, -6.1731

Complementary

The Complementary color scheme is a pair of colors which are on the opposite of each other on the color wheel.



27.0326, 6.4788, 2.5615



32.0031, -8.5592, 1.2330

Split Complementary

Split-complementary colors differ from the complementary color scheme. The scheme consists of three colors, the original color and two neighbors of the complement color.



27.0332, -7.1072, -3.4669



27.0326, 6.4788, 2.5615



27.0332, -8.1703, 3.9489

Square

The Square scheme is like the rectangle color scheme, but the four colors are evenly spaced on the color wheel.



27.0332, 6.4778, 2.5620



27.0332, -2.6050, 7.6814



27.0332, -8.5469, 0.3336



27.0332, -0.2628, -6.6855

Rectangle

The Rectangle color scheme consists of four colors that form a rectangle on the color wheel.



27.0326, 6.4788, 2.5615



27.0332, 2.5962, 6.9546



27.0332, -8.5469, 0.3336



27.0332, -5.2598, -5.4730

Sweetspot

The Sweet Spot groups the original color and five complimentary colors.



27.0332, 6.4778, 2.5620



41.3626, 0.9419, 2.6100



27.2444, 8.3659, -6.6267



20.0613, 0.6799, 1.2938



71.2094, -3.7996, 3.8689



21.6712, -1.1563, 1.1774

Same Dimension

The Same Dimension uses a secret algorithm to generate beautiful new colors.



27.0332, 6.4778, 2.5620



33.3445, 11.3349, 3.7449



28.9338, 2.2559, 5.9940



16.1126, 0.4745, 1.0301



18.7120, 32.2772, 10.2895



43.1450, 74.2166, 25.3258

Inverse Universe

The Inverse Universe completely reimagines the original color for something new.



27.0332, 6.4778, 2.5620



33.3445, 11.3349, 3.7449



29.8180, -4.4532, -3.2317



16.1126, 0.4745, 1.0301



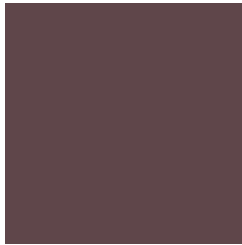
18.7120, 32.2772, 10.2895



43.1450, 74.2166, 25.3258

Previews

White Background



This preview shows how the HunterLab color 27.0326, 6.4788, 2.5615 looks on a white background.

Color Contrast Check

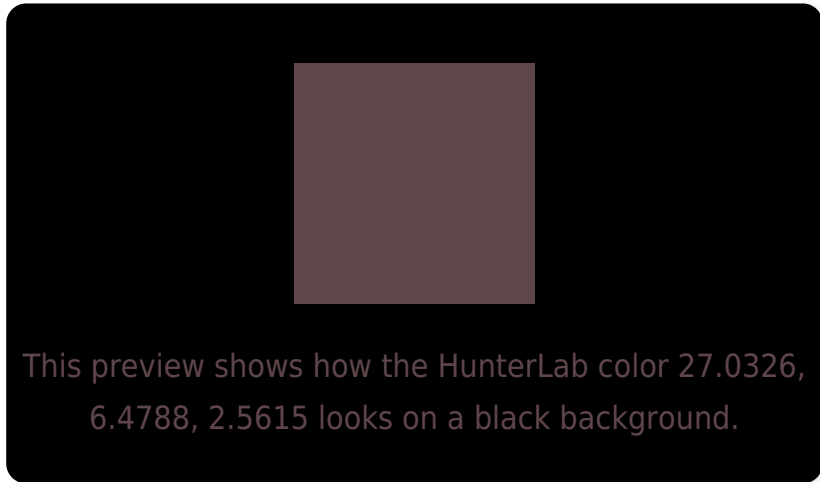
Large Text (above 18pt) WCAG AA ✓ Pass

Any Text WCAG AA ✓ Pass

Large Text (above 18pt) WCAG AAA ✓ Pass

Any Text WCAG AAA ✓ Pass

Black Background



Color Contrast Check

Large Text (above 18pt) WCAG AA × Fail

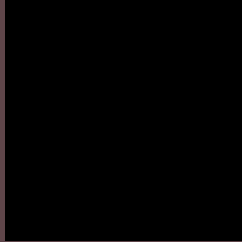
Any Text WCAG AA × Fail

Large Text (above 18pt) WCAG AAA × Fail

Any Text WCAG AAA × Fail

If you want to check with other color combinations, try the [Color Contrast Checker](#).

HunterLab 27.0326, 6.4788, 2.5615 Background



This preview shows how black text looks on a background with the HunterLab color 27.0326, 6.4788, 2.5615.



This preview shows how white text looks on a background with the HunterLab color 27.0326, 6.4788,

Color Blindness Simulation

Color vision deficiency is a very complex topic, and I could not describe the different causes any better than Wikipedia does, so if you want to learn more, you should check out their [article about color blindness](#).

Dichromacy



Original Color

27.0326, 6.4788, 2.5615

Protanopia

27.0899, -0.6146, 0.9068

Deuteranopia

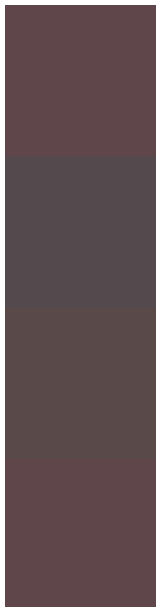
27.0368, 1.5259, 2.8639



Tritanopia

27.0577, 6.6090, 2.2023

Trichromacy



Original Color

27.0326, 6.4788, 2.5615

Protanomaly

27.0522, 1.7801, 1.3123

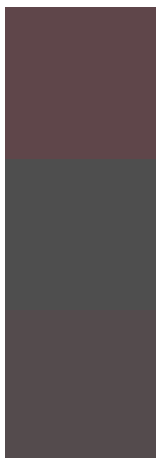
Deuteranomaly

27.1477, 3.1528, 3.0171

Tritanomaly

27.0577, 6.6090, 2.2023

Monochromacy



Original Color

27.0326, 6.4788, 2.5615

Achromatopsia

27.6017, -1.4728, 1.4997

Achromatomaly

27.2998, 1.3412, 1.5968

CSS Examples

Text

The CSS property to change the color of the text to HunterLab 27.0326, 6.4788, 2.5615 is called "color". The color property can be set on classes, ids or directly on the HTML element.

This example shows how text in the color `rgb(95, 70, 74)` looks like.

```
.text, #text, p{  
    color:rgb(95, 70, 74)  
}
```

If you want to add a text shadow in that color use the text-shadow property, you can generate a text shadow directly with our [CSS Text Shadow Generator](#).

Here you see how black text with a 4 pixel rgb(95, 70, 74) colored shadow looks like.

```
.shadow{ text-shadow: 4px 4px 2px rgb(95, 70, 74) }
```

Border

The CSS property to change the border of an element to HunterLab 27.0326, 6.4788, 2.5615 is called "border". The border property can be set on classes, ids or directly on the HTML element.

This example shows the color as border, it can be applied via the CSS property "border" or "border-color".

```
.border, #border, table{ border:4px solid rgb(95, 70, 74) }
```


If only the border color should be changed use the property `border-color`.

```
.border{ border-color:rgb(95, 70, 74) }
```

If you want to add a box shadow in that color use:

Here you see how a box with a 4 pixel `rgb(95, 70, 74)` colored shadow looks like.

```
.boxshadow{ -moz-box-shadow:4px 4px 4px  
4px rgb(95, 70, 74); -webkit-box-  
shadow:4px 4px 4px 4px rgb(95, 70, 74);  
box-shadow:4px 4px 4px 4px rgb(95, 70, 74)  
}
```

Background

The CSS property to change the background color of an element to HunterLab 27.0326, 6.4788, 2.5615 is called "background". The background property can be set on classes, ids or directly on the HTML element.

```
.background, #background, body{  
background: rgb(95, 70, 74) }
```

If only the background color should be changed can be used:

```
.background{ background-color: rgb(95, 70,  
74) }
```

This example shows the color as background, it is applied via the CSS property "background".

To optimize and compress your CSS code, you can use our [online CSS compressor and optimizer](#) based on csstidy. If you want to create a linear or radial gradient as background or border, check our [CSS Gradient Generator](#).

Hey! You found this booklet interesting? Support Converting Colors with the new Membership Option!

The pro membership hides all ads, plus gives you double the colors in the color bucket, and more awesome pro features!

[Learn more, Memberships starting at \\$2.50/m!](#)

**Follow me
on Twitter!**

@ConvertingColor