

Converting Colors

HunterLab(27.0426, 9.4678,
1.1485)

Have a look what the booklet for
HunterLab(27.0426, 9.4678, 1.1485)
contains.

HunterLab(27.0868, 9.1914, 1.0748)	3
<i>Conversions</i>	4
<i>Details</i>	6
<i>Harmonies</i>	12
<i>Previews</i>	24
<i>Color Blindness Simulation</i>	28
<i>CSS Examples</i>	31

Color

**HunterLab(27.0868, 9.1914,
1.0748)**

Conversions

Conversions Part 1

Format	Color
Hex	63444E
RGB	99, 68, 78
RGB Percent	39%, 27%, 31%
CMY	0.6118, 0.7333, 0.6941
CMYK	0.00, 0.31, 0.21, 0.61
HSL	341°, 19%, 33%
HSV	341°, 31%, 39%
XYZ	8.5879, 7.3369, 8.1713
YIQ	78.4090, 15.2660, 9.6820

Conversions

Conversions Part 2

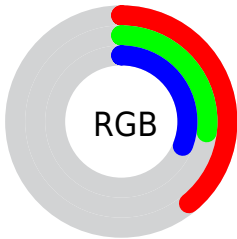
Format	Color
R_{YB}	99, 68, 78
Decimal	6505550
CIE Lab	32.56, 15.04, -0.63
CIE LCh	33, 15.056, 357.593
Yxy	7.3373, 0.3564, 0.3045
Android (android.graphics.Color)	4284695630 (0xFF63444E)
YUV	78.4090, -0.2016, 18.0583
Hunter-Lab	27.0868, 9.1914, 1.0748

Details

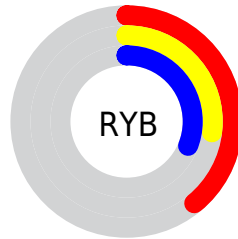
The HunterLab color **27.0868, 9.1914, 1.0748** is a dark color, and the websafe version is hex **663333**. A complement of this color would be **32.9759, -10.8891, 3.1349**, and the grayscale version is **27.7463, -1.4805, 1.5075**.

A 20% lighter version of the original color is **45.2848, 10.0467, 1.7918**, and **12.1349, 7.8978, 0.2216** is the 20% darker color. If you saturate the color by 10%, you get **24.7948, 12.8383, 1.1302**, and if you desaturate by 10%, it is **29.5615, 5.5774, 1.1982**.

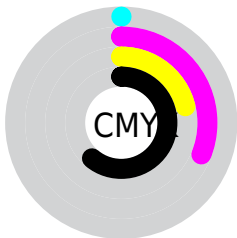
Distribution



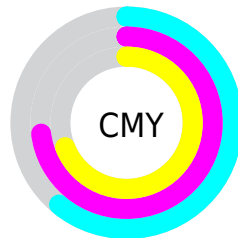
- Red (39%)
- Green (27%)
- Blue (31%)



- Red (39%)
- Yellow (27%)
- Blue (31%)



- Cyan (0%)
- Magenta (31%)
- Yellow (21%)
- Black (61%)



- Cyan (61%)
- Magenta (73%)
- Yellow (69%)

Brightness & Saturation Gradients

These gradients show how the HunterLab color 27.0868, 9.1914, 1.0748 changes by changing the brightness by 10 percent. The first figure shows a shift by +10% for each color and the second figure -10%.

Similar to the brightness gradients but the following saturation gradients show a change of the HunterLab color 27.0868, 9.1914, 1.0748 by changing the saturation by 10% instead.

■ 27.0868, 9.1914,
1.0748

■ 27.0868, 9.1914,
1.0748

■ 130.5517, 10.1884,
6.4354

■ 19.1675, 8.6286,
0.6870

■ 45.4407, 9.9552,
2.0003

■ 12.2184, 7.9123,
0.3574

■ 55.7363, 10.1933,
2.5277

■ 5.3265, 12.0220,
-0.2021

■ 66.7098, 10.3513,
3.0940

0.0000, NaN, NaN

0.0000, NaN, NaN

■ 78.3217, 10.4378,
3.6968

0.0000, NaN, NaN

■ 90.5387, 10.4597,
4.3340

0.0000, NaN, NaN

103.3321, 10.4225,

0.0000, NaN, NaN

5.0038

0.0000, NaN, NaN

116.6771, 10.3308,
5.7047

■ 27.0868, 9.1914,
1.0748

■ 27.0868, 9.1914,
1.0748

■ 24.7948, 12.8383,
1.1302

■ 29.5615, 5.5774,
1.1982

■ 22.7158, 16.4562,
1.3956

■ 32.1905, 2.0314,
1.4684

■ 20.8868, 19.9300,
1.9018

■ 34.9523, -1.4362,
1.8600

■ 19.3467, 23.0872,
2.6660

■ 37.8293, -4.8253,
2.3519

■ 18.1304, 25.7054,
3.6785

■ 40.8072, -8.1417,
2.9270

■ 17.2563, 27.5726,
4.8854

■ 43.8742, -11.3935,
3.5718

■ 16.6029, 29.0589,
5.8771

■ 47.0208, -14.5897,
4.2755

■ 50.2392, -17.7388,
5.0296

■ 53.5228, -20.8488,
5.8271

Harmonies

Analogous

The Analogous color harmony consists of three colors that are next to each other on the color wheel.



27.0874, 7.4443, -4.0841



27.0868, 9.1914, 1.0748



27.0874, 7.9142, 5.4902

Triad

The Triadic color harmony groups three colors that are evenly spaced from another and form a triangle on the color wheel.



27.0874, 9.1904, 1.0753



27.0874, -5.8888, 8.5734



27.0874, -6.5592, -7.7603

Complementary

The Complementary color scheme is a pair of colors which are on the opposite of each other on the color wheel.



27.0868, 9.1914, 1.0748



32.9759, -10.8891, 3.1349

Split Complementary

Split-complementary colors differ from the complementary color scheme. The scheme consists of three colors, the original color and two neighbors of the complement color.



27.0874, -9.6872, -3.2692



27.0868, 9.1914, 1.0748



27.0874, -9.3210, 6.0585

Square

The Square scheme is like the rectangle color scheme, but the four colors are evenly spaced on the color wheel.



27.0874, 9.1904, 1.0753



27.0874, -1.0291, 9.3077



27.0874, -10.6598, 1.8676



27.0874, -1.8619, -9.7456

Rectangle

The Rectangle color scheme consists of four colors that form a rectangle on the color wheel.



27.0868, 9.1914, 1.0748



27.0874, 5.5706, 7.5560



27.0874, -10.6598, 1.8676



27.0874, -7.8153, -6.4569

Sweetspot

The Sweet Spot groups the original color and five complimentary colors.



27.0874, 9.1904, 1.0753



42.8911, 1.7193, 2.0166



26.7261, 9.3813, -9.5546



20.7310, 1.0697, 0.9598



72.2857, -3.8570, 3.9274



22.5557, -1.2035, 1.2255

Same Dimension

The Same Dimension uses a secret algorithm to generate beautiful new colors.



27.0874, 9.1904, 1.0753



33.1211, 15.7507, 1.4419



28.0310, 5.6003, 5.8022



16.1314, 0.5754, 0.7630



18.9378, 33.1103, 6.9762



43.6039, 75.9120, 18.5720

Inverse Universe

The Inverse Universe completely reimagines the original color for something new.



27.0874, 9.1904, 1.0753



33.1211, 15.7507, 1.4419



31.7896, -7.2068, -2.5537



16.1314, 0.5754, 0.7630



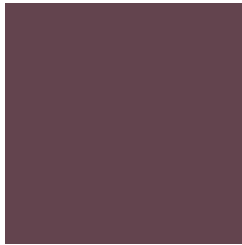
18.9378, 33.1103, 6.9762



43.6039, 75.9120, 18.5720

Previews

White Background



This preview shows how the HunterLab color 27.0868, 9.1914, 1.0748 looks on a white background.

Color Contrast Check

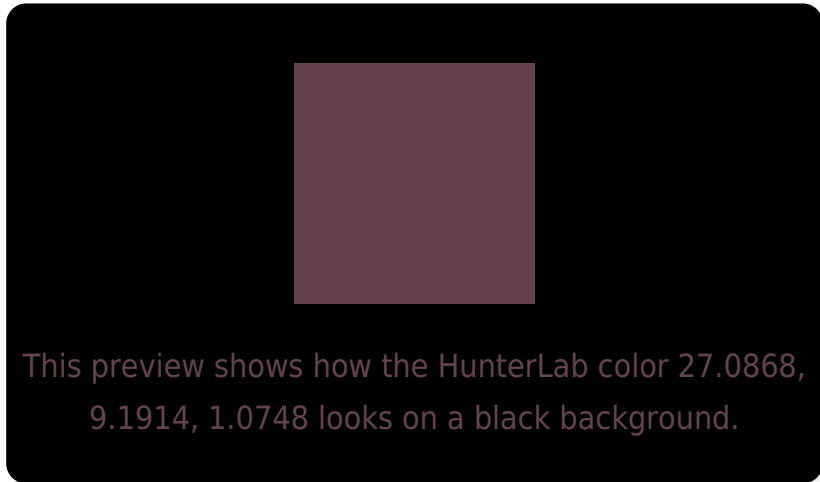
Large Text (above 18pt) WCAG AA ✓ Pass

Any Text WCAG AA ✓ Pass

Large Text (above 18pt) WCAG AAA ✓ Pass

Any Text WCAG AAA ✓ Pass

Black Background



Color Contrast Check

Large Text (above 18pt) WCAG AA × Fail

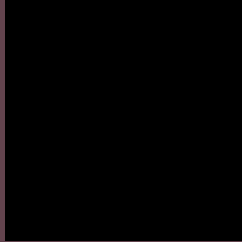
Any Text WCAG AA × Fail

Large Text (above 18pt) WCAG AAA × Fail

Any Text WCAG AAA × Fail

If you want to check with other color combinations, try the [Color Contrast Checker](#).

HunterLab 27.0868, 9.1914, 1.0748 Background



This preview shows how black text looks on a background with the HunterLab color 27.0868, 9.1914, 1.0748.



This preview shows how white text looks on a background with the HunterLab color 27.0868, 9.1914,

Color Blindness Simulation

Color vision deficiency is a very complex topic, and I could not describe the different causes any better than Wikipedia does, so if you want to learn more, you should check out their [article about color blindness](#).

Dichromacy



Original Color

27.0868, 9.1914, 1.0748

Protanopia

27.0738, -0.3951, -1.2458

Deuteranopia

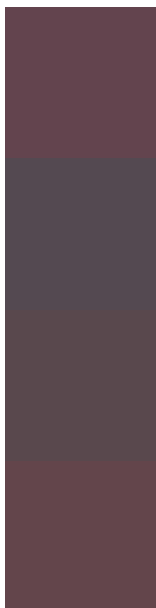
27.0522, 1.7801, 1.3123



Tritanopia

27.2090, 8.2109, 2.7926

Trichromacy



Original Color

27.0868, 9.1914, 1.0748

Protanomaly

26.9147, 2.7984, -0.5149

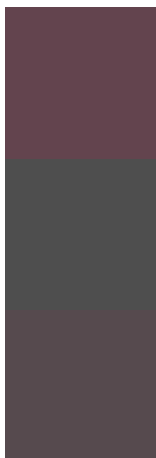
Deuteranomaly

27.0081, 4.1332, 1.3013

Tritanomaly

27.2340, 8.3387, 2.4356

Monochromacy



Original Color

27.0868, 9.1914, 1.0748

Achromatopsia

27.6017, -1.4728, 1.4997

Achromatomaly

27.2508, 2.4972, 1.1535

CSS Examples

Text

The CSS property to change the color of the text to HunterLab 27.0868, 9.1914, 1.0748 is called "color". The color property can be set on classes, ids or directly on the HTML element.

This example shows how text in the color rgb(99, 68, 78) looks like.

```
.text, #text, p{  
    color:rgb(99, 68, 78)  
}
```

If you want to add a text shadow in that color use the text-shadow property, you can generate a text shadow directly with our [CSS Text Shadow Generator](#).

Here you see how black text with a 4 pixel rgb(99, 68, 78) colored shadow looks like.

```
.shadow{ text-shadow: 4px 4px 2px rgb(99, 68, 78) }
```

Border

The CSS property to change the border of an element to HunterLab 27.0868, 9.1914, 1.0748 is called "border".

The border property can be set on classes, ids or directly on the HTML element.

This example shows the color as border, it can be applied via the CSS property "border" or "border-color".

```
.border, #border, table{ border:4px solid rgb(99, 68, 78) }
```


If only the border color should be changed use the property border-color.

```
.border{ border-color:rgb(99, 68, 78) }
```

If you want to add a box shadow in that color use:

Here you see how a box with a 4 pixel rgb(99, 68, 78) colored shadow looks like.

```
.boxshadow{ -moz-box-shadow:4px 4px 4px  
4px rgb(99, 68, 78); -webkit-box-  
shadow:4px 4px 4px 4px rgb(99, 68, 78);  
box-shadow:4px 4px 4px 4px rgb(99, 68, 78)  
}
```

Background

The CSS property to change the background color of an element to HunterLab 27.0868, 9.1914, 1.0748 is called "background". The background property can be set on classes, ids or directly on the HTML element.

```
.background, #background, body{  
background: rgb(99, 68, 78) }
```

If only the background color should be changed can be used:

```
.background{ background-color: rgb(99, 68,  
78) }
```

This example shows the color as background, it is applied via the CSS property "background".

To optimize and compress your CSS code, you can use our [online CSS compressor and optimizer](#) based on csstidy. If you want to create a linear or radial gradient as background or border, check our [CSS Gradient Generator](#).

Hey! You found this booklet interesting? Support Converting Colors with the new Membership Option!

The pro membership hides all ads, plus gives you double the colors in the color bucket, and more awesome pro features!

[Learn more, Memberships starting at \\$2.50/m!](#)

**Follow me
on Twitter!**

@ConvertingColor