

Converting Colors

HunterLab(27.1413, 0.8677,
7.2830)

Have a look what the booklet for
HunterLab(27.1413, 0.8677, 7.2830)
contains.

HunterLab(27.0158, 0.8820, 7.2804)	3
<i>Conversions</i>	4
<i>Details</i>	6
<i>Harmonies</i>	12
<i>Previews</i>	24
<i>Color Blindness Simulation</i>	28
<i>CSS Examples</i>	31

Color

**HunterLab(27.0158, 0.8820,
7.2804)**

Conversions

Conversions Part 1

Format	Color
Hex	584A3C
RGB	88, 74, 60
RGB Percent	35%, 29%, 24%
CMY	0.6549, 0.7098, 0.7647
CMYK	0.00, 0.16, 0.32, 0.65
HSL	30°, 19%, 29%
HSV	30°, 32%, 35%
XYZ	7.2889, 7.2985, 5.2996
YIQ	76.5900, 12.8380, -1.3860

Conversions

Conversions Part 2

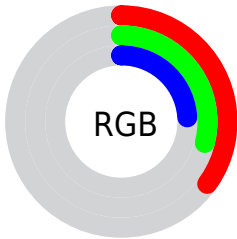
Format	Color
RYB	88, 88, 60
Decimal	5786172
CIELab	32.48, 3.47, 10.56
CIELCh	32, 11.116, 71.791
Yxy	7.2989, 0.3665, 0.3670
Android (android.graphics.Color)	4283976252 (0xFF584A3C)
YUV	76.5900, -8.1789, 10.0066
Hunter-Lab	27.0158, 0.8820, 7.2804

Details

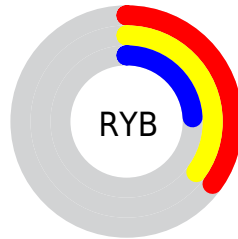
The HunterLab color **27.0158, 0.8820, 7.2804** is a dark color, and the websafe version is hex **666666**. A complement of this color would be **25.6176, -2.5104, -5.6266**, and the grayscale version is **27.1207, -1.4471, 1.4735**.

A 20% lighter version of the original color is **45.4211, -0.0321, 9.8305**, and **12.1015, 1.3652, 4.6770** is the 20% darker color. If you saturate the color by 10%, you get **25.7805, 1.9103, 8.6629**, and if you desaturate by 10%, it is **28.2984, -0.0341, 5.7082**.

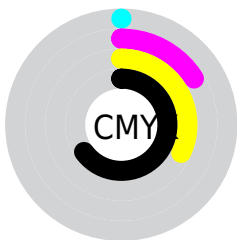
Distribution



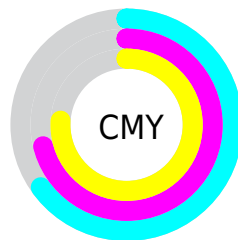
- Red (35%)
- Green (29%)
- Blue (24%)



- Red (35%)
- Yellow (35%)
- Blue (24%)



- Cyan (0%)
- Magenta (16%)
- Yellow (32%)
- Black (65%)



- Cyan (65%)
- Magenta (71%)
- Yellow (76%)

Brightness & Saturation Gradients

These gradients show how the HunterLab color 27.0158, 0.8820, 7.2804 changes by changing the brightness by 10 percent. The first figure shows a shift by +10% for each color and the second figure -10%.

Similar to the brightness gradients but the following saturation gradients show a change of the HunterLab color 27.0158, 0.8820, 7.2804 by changing the saturation by 10% instead.

■ 27.0158, 0.8820,
7.2804

■ 27.0158, 0.8820,
7.2804

■ 130.4318, -3.0806,
17.7848

■ 19.1042, 1.0590,
6.0413

■ 45.3563, 0.3263,
9.6434

■ 12.1639, 1.1523,
4.7818

■ 55.6459, -0.0338,
10.8000

■ 5.2375, 2.6102,
3.6662

■ 66.6139, -0.4416,
11.9522

0.0000, NaN, NaN

0.0000, NaN, NaN

■ 78.2205, -0.8932,
13.1052

0.0000, NaN, NaN

■ 90.4325, -1.3853,
14.2627

0.0000, NaN, NaN

0.0000, NaN, NaN

■ 103.2211, -1.9153,

15.4273

0.0000, NaN, NaN

116.5616, -2.4811,
16.6009

■ 27.0158, 0.8820,
7.2804

■ 27.0158, 0.8820,
7.2804

■ 25.7805, 1.9103,
8.6629

■ 28.2984, -0.0341,
5.7082

■ 24.5943, 3.0589,
9.8367

■ 29.6230, -0.8417,
3.9624

■ 23.4618, 4.3307,
10.7843

■ 30.9871, -1.5486,
2.0590

■ 22.3871, 5.7263,
11.4891

■ 32.3879, -2.1620,
0.0125

■ 21.3743, 7.2426,
11.9377

■ 33.8228, -2.6887,
-2.1640

■ 20.4263, 8.8642,
12.1416

■ 35.2896, -3.1354,
-4.4589

■ 19.6890, 10.1983,
12.3108

■ 36.7860, -3.5083,
-6.8618

■ 38.3102, -3.8132,
-9.3636

■ 39.8605, -4.0556,
-11.9561

Harmonies

Analogous

The Analogous color harmony consists of three colors that are next to each other on the color wheel.



27.0164, 4.2301, 5.7090



27.0158, 0.8820, 7.2804



27.0164, -2.9216, 7.4340

Triad

The Triadic color harmony groups three colors that are evenly spaced from another and form a triangle on the color wheel.



27.0164, 0.8811, 7.2808



27.0164, -8.2372, 0.0097



27.0164, 3.6067, -4.2490

Complementary

The Complementary color scheme is a pair of colors which are on the opposite of each other on the color wheel.



27.0158, 0.8820, 7.2804



25.6176, -2.5104, -5.6266

Split Complementary

Split-complementary colors differ from the complementary color scheme. The scheme consists of three colors, the original color and two neighbors of the complement color.



27.0164, 0.0681, -6.2664



27.0158, 0.8820, 7.2804



27.0164, -6.6835, -3.5899

Square

The Square scheme is like the rectangle color scheme, but the four colors are evenly spaced on the color wheel.



27.0164, 0.8811, 7.2808



27.0164, -8.0464, 3.5559



27.0164, -3.6910, -6.0098



27.0164, 5.8628, -0.7955

Rectangle

The Rectangle color scheme consists of four colors that form a rectangle on the color wheel.



27.0158, 0.8820, 7.2804



27.0164, -5.1897, 6.7418



27.0164, -3.6910, -6.0098



27.0164, 2.5197, -5.1378

Sweetspot

The Sweet Spot groups the original color and five complimentary colors.



27.0164, 0.8811, 7.2808



39.4371, -1.2601, 4.8782



24.0851, 8.8140, -0.9530



19.7699, -0.5898, 2.5654



70.1359, -3.7423, 3.8106



20.7927, -1.1094, 1.1297

Same Dimension

The Same Dimension uses a secret algorithm to generate beautiful new colors.



27.0164, 0.8811, 7.2808



34.5033, 2.1629, 11.0129



30.6275, -5.0508, 10.5083



15.0543, -0.5354, 1.7023



23.9361, 13.1033, 14.9787



55.1278, 34.7510, 34.5779

Inverse Universe

The Inverse Universe completely reimagines the original color for something new.



25.6176, -2.5104, -5.6266



32.2429, -3.2853, -9.8766



22.1293, 3.5479, -11.0383



14.8564, -1.0193, -0.1194



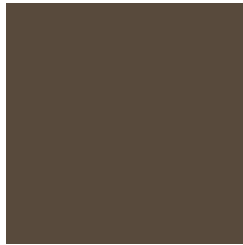
19.1300, 3.4455, -31.3487



43.3171, 12.0994, -80.2617

Previews

White Background



This preview shows how the HunterLab color 27.0158, 0.8820, 7.2804 looks on a white background.

Color Contrast Check

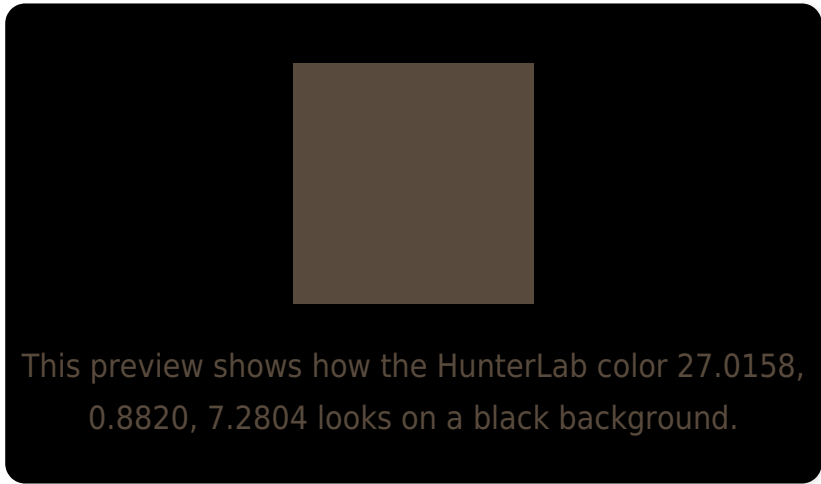
Large Text (above 18pt) WCAG AA ✓ Pass

Any Text WCAG AA ✓ Pass

Large Text (above 18pt) WCAG AAA ✓ Pass

Any Text WCAG AAA ✓ Pass

Black Background



Color Contrast Check

Large Text (above 18pt) WCAG AA × Fail

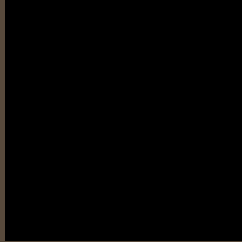
Any Text WCAG AA × Fail

Large Text (above 18pt) WCAG AAA × Fail

Any Text WCAG AAA × Fail

If you want to check with other color combinations, try the [Color Contrast Checker](#).

HunterLab 27.0158, 0.8820, 7.2804 Background



This preview shows how black text looks on a background with the HunterLab color 27.0158, 0.8820, 7.2804.



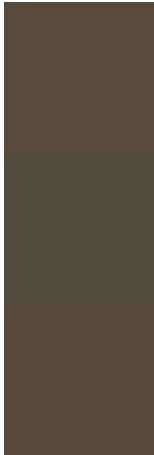
This preview shows how white text looks on a background with the HunterLab color 27.0158, 0.8820,

7.2804.

Color Blindness Simulation

Color vision deficiency is a very complex topic, and I could not describe the different causes any better than Wikipedia does, so if you want to learn more, you should check out their [article about color blindness](#).

Dichromacy



Original Color

27.0158, 0.8820, 7.2804

Protanopia

26.9354, -1.9403, 6.8455

Deuteranopia

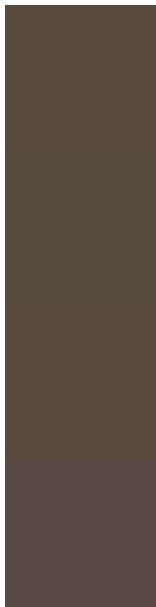
26.8611, 1.6233, 7.1440



Tritanopia

27.1002, 4.4339, 1.4157

Trichromacy



Original Color

27.0158, 0.8820, 7.2804

Protanomaly

26.9331, -0.6437, 6.8659

Deuteranomaly

26.8611, 1.6233, 7.1440

Tritanomaly

27.0996, 2.8971, 3.7070

Monochromacy



Original Color

27.0158, 0.8820, 7.2804

Achromatopsia

27.2422, -1.4536, 1.4801

Achromatomaly

27.1535, -0.7459, 3.7024

CSS Examples

Text

The CSS property to change the color of the text to HunterLab 27.0158, 0.8820, 7.2804 is called "color". The color property can be set on classes, ids or directly on the HTML element.

This example shows how text in the color `rgb(88, 74, 60)` looks like.

```
.text, #text, p{  
    color:rgb(88, 74, 60)  
}
```

If you want to add a text shadow in that color use the text-shadow property, you can generate a text shadow directly with our [CSS Text Shadow Generator](#).

Here you see how black text with a 4 pixel rgb(88, 74, 60) colored shadow looks like.

```
.shadow{ text-shadow: 4px 4px 2px rgb(88, 74, 60) }
```

Border

The CSS property to change the border of an element to HunterLab 27.0158, 0.8820, 7.2804 is called "border".

The border property can be set on classes, ids or directly on the HTML element.

This example shows the color as border, it can be applied via the CSS property "border" or "border-color".

```
.border, #border, table{ border:4px solid rgb(88, 74, 60) }
```


If only the border color should be changed use the property `border-color`.

```
.border{ border-color:rgb(88, 74, 60) }
```

If you want to add a box shadow in that color use:

Here you see how a box with a 4 pixel `rgb(88, 74, 60)` colored shadow looks like.

```
.boxshadow{ -moz-box-shadow:4px 4px 4px  
4px rgb(88, 74, 60); -webkit-box-  
shadow:4px 4px 4px 4px rgb(88, 74, 60);  
box-shadow:4px 4px 4px 4px rgb(88, 74, 60)  
}
```

Background

The CSS property to change the background color of an element to HunterLab 27.0158, 0.8820, 7.2804 is called "background". The background property can be set on classes, ids or directly on the HTML element.

```
.background, #background, body{  
background: rgb(88, 74, 60) }
```

If only the background color should be changed can be used:

```
.background{ background-color: rgb(88, 74,  
60) }
```

This example shows the color as background, it is applied via the CSS property "background".

To optimize and compress your CSS code, you can use our [online CSS compressor and optimizer](#) based on csstidy. If you want to create a linear or radial gradient as background or border, check our [CSS Gradient Generator](#).

Hey! You found this booklet interesting? Support Converting Colors with the new Membership Option!

The pro membership hides all ads, plus gives you double the colors in the color bucket, and more awesome pro features!

[Learn more, Memberships starting at \\$2.50/m!](#)

**Follow me
on Twitter!**

@ConvertingColor