

Converting Colors

HunterLab(27.1620, 7.1480,
0.7155)

Have a look what the booklet for
HunterLab(27.1620, 7.1480, 0.7155)
contains.

HunterLab(27.1620, 7.1480, 0.7155)	3
<i>Conversions</i>	4
<i>Details</i>	6
<i>Harmonies</i>	12
<i>Previews</i>	24
<i>Color Blindness Simulation</i>	28
<i>CSS Examples</i>	31

Color

**HunterLab(27.1620, 7.1480,
0.7155)**

Conversions

Conversions Part 1

Format	Color
Hex	5F464F
RGB	95, 70, 79
RGB Percent	37%, 27%, 31%
CMY	0.6274, 0.7255, 0.6902
CMYK	0.00, 0.26, 0.17, 0.63
HSL	338°, 15%, 32%
HSV	338°, 26%, 37%
XYZ	8.3208, 7.3777, 8.3827
YIQ	78.5010, 12.0110, 8.0990

Conversions

Conversions Part 2

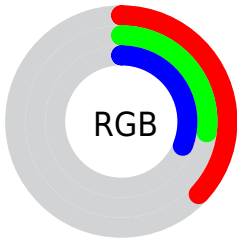
Format	Color
RYB	95, 70, 79
Decimal	6243919
CIELab	32.65, 12.31, -1.20
CIElCh	33, 12.364, 354.436
Yxy	7.3781, 0.3455, 0.3064
Android (android.graphics.Color)	4284433999 (0xFF5F464F)
YUV	78.5010, 0.2460, 14.4696
Hunter-Lab	27.1620, 7.1480, 0.7155

Details

The HunterLab color **27.1620, 7.1480, 0.7155** is a dark color, and the websafe version is hex **666666**. A complement of this color would be **31.8726, -9.3045, 3.0984**, and the grayscale version is **27.7788, -1.4822, 1.5093**.

A 20% lighter version of the original color is **45.4163, 7.8875, 1.4628**, and **12.2005, 6.3257, -0.0987** is the 20% darker color. If you saturate the color by 10%, you get **24.8948, 10.6522, 0.5474**, and if you desaturate by 10%, it is **29.5886, 3.6889, 1.0416**.

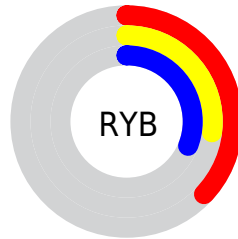
Distribution



Red (37%)

Green (27%)

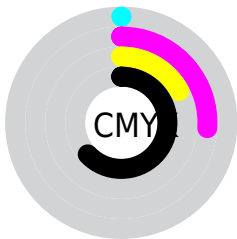
Blue (31%)



Red (37%)

Yellow (27%)

Blue (31%)

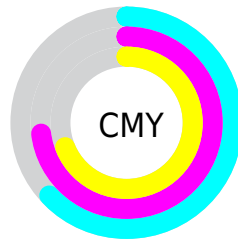


Cyan (0%)

Magenta (26%)

Yellow (17%)

Black (63%)



Cyan (63%)

Magenta (73%)

Yellow (69%)

Brightness & Saturation Gradients

These gradients show how the HunterLab color 27.1620, 7.1480, 0.7155 changes by changing the brightness by 10 percent. The first figure shows a shift by +10% for each color and the second figure -10%.

Similar to the brightness gradients but the following saturation gradients show a change of the HunterLab color 27.1620, 7.1480, 0.7155 by changing the saturation by 10% instead.

■ 27.1620, 7.1480,
0.7155

■ 27.1620, 7.1480,
0.7155

■ 130.6787, 6.9993,
5.8378

■ 19.2345, 6.7508,
0.3648

■ 45.5301, 7.6112,
1.5763

■ 12.2760, 6.2109,
0.0772

■ 55.8319, 7.7116,
2.0748

■ 5.4190, 9.6057,
-0.6219

■ 66.8113, 7.7388,
2.6140

0.0000, NaN, NaN

0.0000, NaN, NaN

■ 78.4288, 7.7005,
3.1911

0.0000, NaN, NaN

■ 90.6511, 7.6029,
3.8038

0.0000, NaN, NaN

103.4496, 7.4508,

0.0000, NaN, NaN

4.4502

0.0000, NaN, NaN

116.7994, 7.2485,
5.1287

■ 27.1620, 7.1480,
0.7155

■ 27.1620, 7.1480,
0.7155

■ 24.8948, 10.6522,
0.5474

■ 29.5886, 3.6889,
1.0416

■ 22.8125, 14.1590,
0.5690

■ 32.1500, 0.2982,
1.4957

■ 20.9478, 17.5840,
0.8161

■ 34.8285, -3.0197,
2.0552

■ 19.3361, 20.7922,
1.3193

■ 37.6090, -6.2670,
2.7013

■ 18.0125, 23.5954,
2.0934

■ 40.4794, -9.4501,
3.4196

■ 17.0051, 25.7755,
3.1218

■ 43.4297, -12.5769,
4.1983

■ 16.2450, 27.4180,
4.2699

■ 46.4517, -15.6555,
5.0285

■ 15.9673, 28.0749,
4.6558

■ 49.5386, -18.6935,
5.9028

■ 52.6849, -21.6978,
6.8155

Harmonies

Analogous

The Analogous color harmony consists of three colors that are next to each other on the color wheel.



27.1626, 5.5028, -3.4287



27.1620, 7.1480, 0.7155



27.1626, 6.3754, 4.4945

Triad

The Triadic color harmony groups three colors that are evenly spaced from another and form a triangle on the color wheel.



27.1626, 7.1471, 0.7160



27.1626, -4.7411, 7.6328



27.1626, -6.0307, -5.6154

Complementary

The Complementary color scheme is a pair of colors which are on the opposite of each other on the color wheel.



27.1620, 7.1480, 0.7155



31.8726, -9.3045, 3.0984

Split Complementary

Split-complementary colors differ from the complementary color scheme. The scheme consists of three colors, the original color and two neighbors of the complement color.



27.1626, -8.4803, -1.9286



27.1620, 7.1480, 0.7155



27.1626, -7.7684, 5.6126

Square

The Square scheme is like the rectangle color scheme, but the four colors are evenly spaced on the color wheel.



27.1626, 7.1471, 0.7160



27.1626, -0.6560, 8.1190



27.1626, -9.0965, 2.2196



27.1626, -2.2365, -7.4261

Rectangle

The Rectangle color scheme consists of four colors that form a rectangle on the color wheel.



27.1620, 7.1480, 0.7155



27.1626, 4.6176, 6.3661



27.1626, -9.0965, 2.2196



27.1626, -7.0292, -4.5294

Sweetspot

The Sweet Spot groups the original color and five complimentary colors.



27.1626, 7.1471, 0.7160



41.4172, 1.2365, 1.8316



26.7908, 6.9407, -7.3302



20.0915, 0.8428, 0.8625



71.2094, -3.7996, 3.8689



21.6712, -1.1563, 1.1774

Same Dimension

The Same Dimension uses a secret algorithm to generate beautiful new colors.



27.1626, 7.1471, 0.7160



33.5532, 12.3930, 0.7651



27.7209, 4.4804, 4.7659



16.1357, 0.5989, 0.7010



19.0098, 33.3747, 5.9287



43.7598, 76.4858, 16.2944

Inverse Universe

The Inverse Universe completely reimagines the original color for something new.



27.1626, 7.1471, 0.7160



33.5532, 12.3930, 0.7651



31.1853, -6.5514, -1.4822



16.1357, 0.5989, 0.7010



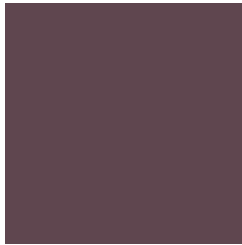
19.0098, 33.3747, 5.9287



43.7598, 76.4858, 16.2944

Previews

White Background



This preview shows how the HunterLab color 27.1620, 7.1480, 0.7155 looks on a white background.

Color Contrast Check

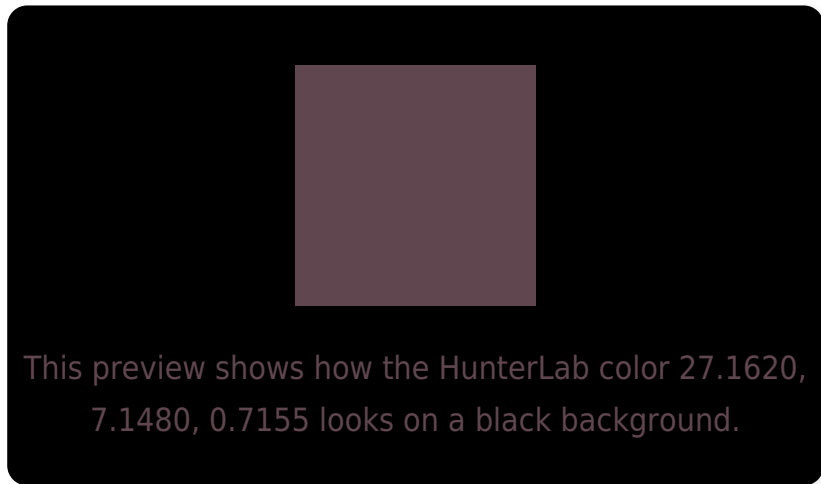
Large Text (above 18pt) WCAG AA ✓ Pass

Any Text WCAG AA ✓ Pass

Large Text (above 18pt) WCAG AAA ✓ Pass

Any Text WCAG AAA ✓ Pass

Black Background



Color Contrast Check

Large Text (above 18pt) WCAG AA × Fail

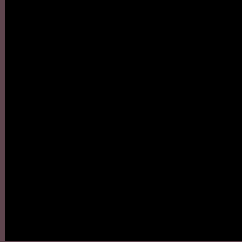
Any Text WCAG AA × Fail

Large Text (above 18pt) WCAG AAA × Fail

Any Text WCAG AAA × Fail

If you want to check with other color combinations, try the [Color Contrast Checker](#).

HunterLab 27.1620, 7.1480, 0.7155 Background



This preview shows how black text looks on a background with the HunterLab color 27.1620, 7.1480, 0.7155.



This preview shows how white text looks on a background with the HunterLab color 27.1620, 7.1480,

0.7155.

Color Blindness Simulation

Color vision deficiency is a very complex topic, and I could not describe the different causes any better than Wikipedia does, so if you want to learn more, you should check out their [article about color blindness](#).

Dichromacy



Original Color

27.1620, 7.1480, 0.7155

Protanopia

27.4045, -0.5669, -0.8288

Deuteranopia

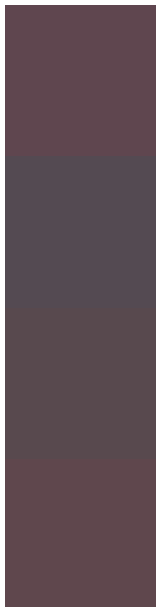
27.3259, 1.4813, 1.2251



Tritanopia

27.3152, 6.2877, 2.1002

Trichromacy



Original Color

27.1620, 7.1480, 0.7155

Protanomaly

27.1874, 2.5033, -0.6118

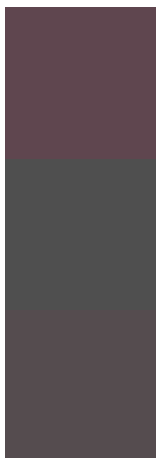
Deuteranomaly

27.1843, 3.5277, 1.0922

Tritanomaly

27.3408, 6.4209, 1.7339

Monochromacy



Original Color

27.1620, 7.1480, 0.7155

Achromatopsia

27.9620, -1.4920, 1.5192

Achromatomaly

27.6852, 1.4677, 1.2436

CSS Examples

Text

The CSS property to change the color of the text to HunterLab 27.1620, 7.1480, 0.7155 is called "color". The color property can be set on classes, ids or directly on the HTML element.

This example shows how text in the color `rgb(95, 70, 79)` looks like.

```
.text, #text, p{  
    color:rgb(95, 70, 79)  
}
```

If you want to add a text shadow in that color use the text-shadow property, you can generate a text shadow directly with our [CSS Text Shadow Generator](#).

Here you see how black text with a 4 pixel rgb(95, 70, 79) colored shadow looks like.

```
.shadow{ text-shadow: 4px 4px 2px rgb(95, 70, 79) }
```

Border

The CSS property to change the border of an element to HunterLab 27.1620, 7.1480, 0.7155 is called "border". The border property can be set on classes, ids or directly on the HTML element.

This example shows the color as border, it can be applied via the CSS property "border" or "border-color".

```
.border, #border, table{ border:4px solid rgb(95, 70, 79) }
```


If only the border color should be changed use the property `border-color`.

```
.border{ border-color:rgb(95, 70, 79) }
```

If you want to add a box shadow in that color use:

Here you see how a box with a 4 pixel `rgb(95, 70, 79)` colored shadow looks like.

```
.boxshadow{ -moz-box-shadow:4px 4px 4px  
4px rgb(95, 70, 79); -webkit-box-  
shadow:4px 4px 4px 4px rgb(95, 70, 79);  
box-shadow:4px 4px 4px 4px rgb(95, 70, 79)  
}
```

Background

The CSS property to change the background color of an element to HunterLab 27.1620, 7.1480, 0.7155 is called "background". The background property can be set on classes, ids or directly on the HTML element.

```
.background, #background, body{  
background: rgb(95, 70, 79) }
```

If only the background color should be changed can be used:

```
.background{ background-color: rgb(95, 70,  
79) }
```

This example shows the color as background, it is applied via the CSS property "background".

To optimize and compress your CSS code, you can use our [online CSS compressor and optimizer](#) based on csstidy. If you want to create a linear or radial gradient as background or border, check our [CSS Gradient Generator](#).

Hey! You found this booklet interesting? Support Converting Colors with the new Membership Option!

The pro membership hides all ads, plus gives you double the colors in the color bucket, and more awesome pro features!

[Learn more, Memberships starting at \\$2.50/m!](#)

**Follow me
on Twitter!**

@ConvertingColor