

Converting Colors

HunterLab(27.2102, 2.8633,
9.5273)

Have a look what the booklet for
HunterLab(27.2102, 2.8633, 9.5273)
contains.

HunterLab(27.3039, 2.8478, 9.5605)	3
<i>Conversions</i>	4
<i>Details</i>	6
<i>Harmonies</i>	12
<i>Previews</i>	24
<i>Color Blindness Simulation</i>	28
<i>CSS Examples</i>	31

Color

**HunterLab(27.3039, 2.8478,
9.5605)**

Conversions

Conversions Part 1

Format	Color
Hex	5F4935
RGB	95, 73, 53
RGB Percent	37%, 29%, 21%
CMY	0.6275, 0.7137, 0.7922
CMYK	0.00, 0.23, 0.44, 0.63
HSL	29°, 28%, 29%
HSV	29°, 44%, 37%
XYZ	7.7445, 7.4550, 4.3989
YIQ	77.2980, 19.5320, -1.5560

Conversions

Conversions Part 2

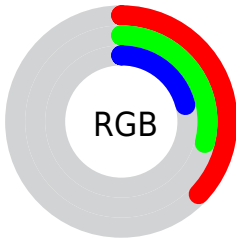
Format	Color
RYB	95, 91, 53
Decimal	6244661
CIELab	32.82, 6.33, 15.55
CIELCh	33, 16.786, 67.858
Yxy	7.4554, 0.3952, 0.3804
Android (android.graphics.Color)	4284434741 (0xFF5F4935)
YUV	77.2980, -11.9789, 15.5247
Hunter-Lab	27.3039, 2.8478, 9.5605

Details

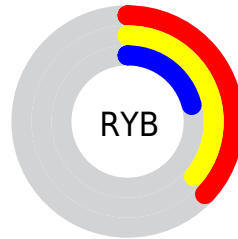
The HunterLab color **27.3039, 2.8478, 9.5605** is a dark color, and the websafe version is hex **663333**. A complement of this color would be **25.7196, -3.0229, -9.1622**, and the grayscale version is **27.3865, -1.4613, 1.4880**.

A 20% lighter version of the original color is **45.8718, 2.5791, 12.7278**, and **12.2588, 2.7322, 6.3517** is the 20% darker color. If you saturate the color by 10%, you get **25.9779, 4.2406, 10.7549**, and if you desaturate by 10%, it is **28.6913, 1.5862, 8.1399**.

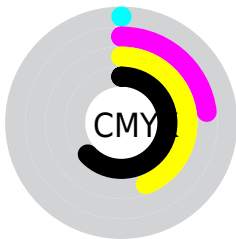
Distribution



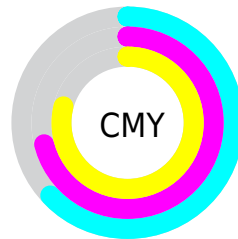
- Red (37%)
- Green (29%)
- Blue (21%)



- Red (37%)
- Yellow (36%)
- Blue (21%)



- Cyan (0%)
- Magenta (23%)
- Yellow (44%)
- Black (63%)



- Cyan (63%)
- Magenta (71%)
- Yellow (79%)

Brightness & Saturation Gradients

These gradients show how the HunterLab color 27.3039, 2.8478, 9.5605 changes by changing the brightness by 10 percent. The first figure shows a shift by +10% for each color and the second figure -10%.

Similar to the brightness gradients but the following saturation gradients show a change of the HunterLab color 27.3039, 2.8478, 9.5605 by changing the saturation by 10% instead.

■ 27.3039, 2.8478,
9.5605

■ 27.3039, 2.8478,
9.5605

■ 130.9182, 0.1277,
22.5503

■ 19.3610, 2.8343,
7.8974

■ 45.6986, 2.6264,
12.6314

■ 12.3850, 2.7150,
6.4745

■ 56.0123, 2.4167,
14.0942

■ 5.5893, 4.6339,
3.9125

■ 67.0028, 2.1505,
15.5296

0.0000, NaN, NaN

0.0000, NaN, NaN

■ 78.6308, 1.8334,
16.9472

0.0000, NaN, NaN

■ 90.8631, 1.4693,
18.3537

0.0000, NaN, NaN

0.0000, NaN, NaN

■ 103.6711, 1.0619,

19.7541

0.0000, NaN, NaN

117.0301, 0.6139,
21.1520

■ 27.3039, 2.8478,
9.5605

■ 27.3039, 2.8478,
9.5605

■ 25.9779, 4.2406,
10.7549

■ 28.6913, 1.5862,
8.1399

■ 24.7166, 5.7709,
11.7009

■ 30.1335, 0.4535,
6.5128

■ 23.5259, 7.4366,
12.3795

■ 31.6266, -0.5586,
4.6995

■ 22.4114, 9.2308,
12.7757

■ 33.1667, -1.4581,
2.7182

■ 21.3753, 11.1235,
12.9280

■ 34.7503, -2.2530,
0.5854

■ 20.8046, 12.2141,
13.0335

■ 36.3740, -2.9515,
-1.6841

■ 38.0350, -3.5613,
-4.0775

■ 39.7307, -4.0897,
-6.5833

■ 41.4588, -4.5434,
-9.1914

Harmonies

Analogous

The Analogous color harmony consists of three colors that are next to each other on the color wheel.



27.3045, 7.8569, 7.1983



27.3039, 2.8478, 9.5605



27.3045, -2.9575, 10.0049

Triad

The Triadic color harmony groups three colors that are evenly spaced from another and form a triangle on the color wheel.



27.3045, 2.8467, 9.5609



27.3045, -11.5950, 0.0048



27.3045, 5.6834, -8.2194

Complementary

The Complementary color scheme is a pair of colors which are on the opposite of each other on the color wheel.



27.3039, 2.8478, 9.5605



25.7196, -3.0229, -9.1622

Split Complementary

Split-complementary colors differ from the complementary color scheme. The scheme consists of three colors, the original color and two neighbors of the complement color.



27.3045, 0.0738, -11.1597



27.3039, 2.8478, 9.5605



27.3045, -9.6712, -5.8099

Square

The Square scheme is like the rectangle color scheme, but the four colors are evenly spaced on the color wheel.



27.3045, 2.8467, 9.5609



27.3045, -10.9865, 5.1696



27.3045, -5.5122, -10.1968



27.3045, 9.5870, -2.7945

Rectangle

The Rectangle color scheme consists of four colors that form a rectangle on the color wheel.



27.3039, 2.8478, 9.5605



27.3045, -6.4478, 9.2624



27.3045, -5.5122, -10.1968



27.3045, 3.9172, -9.5774

Sweetspot

The Sweet Spot groups the original color and five complimentary colors.



27.3045, 2.8467, 9.5609



41.5538, -0.8335, 5.9445



23.4364, 14.4043, -2.3288



20.1900, -0.3131, 3.0991



71.2094, -3.7996, 3.8689



21.6712, -1.1563, 1.1774

Same Dimension

The Same Dimension uses a secret algorithm to generate beautiful new colors.



27.3045, 2.8467, 9.5609



33.9362, 5.6190, 14.1256



32.5951, -5.9522, 13.8539



16.6296, -0.5381, 1.8800



24.5844, 15.0673, 15.4126



55.2655, 38.5145, 34.7286

Inverse Universe

The Inverse Universe completely reimagines the original color for something new.



25.7196, -3.0229, -9.1622



31.4155, -3.6143, -15.7003



20.6371, 6.0225, -18.2822



16.4592, -1.1789, -0.1278



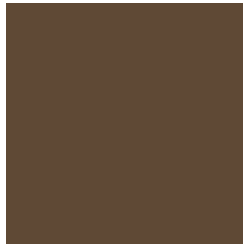
20.6837, 2.5324, -31.3195



45.9115, 9.4122, -77.7036

Previews

White Background



This preview shows how the HunterLab color 27.3039, 2.8478, 9.5605 looks on a white background.

Color Contrast Check

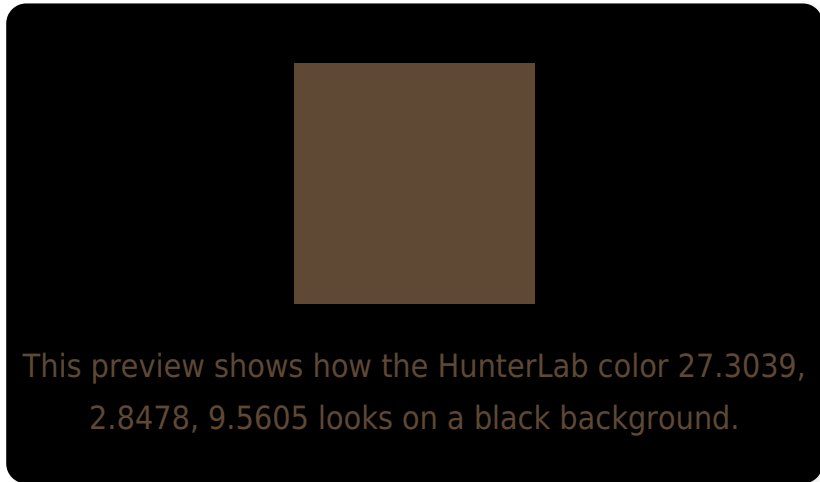
Large Text (above 18pt) WCAG AA ✓ Pass

Any Text WCAG AA ✓ Pass

Large Text (above 18pt) WCAG AAA ✓ Pass

Any Text WCAG AAA ✓ Pass

Black Background



Color Contrast Check

Large Text (above 18pt) WCAG AA × Fail

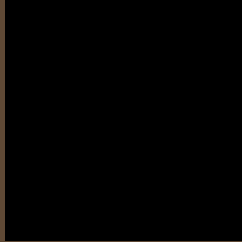
Any Text WCAG AA × Fail

Large Text (above 18pt) WCAG AAA × Fail

Any Text WCAG AAA × Fail

If you want to check with other color combinations, try the [Color Contrast Checker](#).

HunterLab 27.3039, 2.8478, 9.5605 Background



This preview shows how black text looks on a background with the HunterLab color 27.3039, 2.8478, 9.5605.



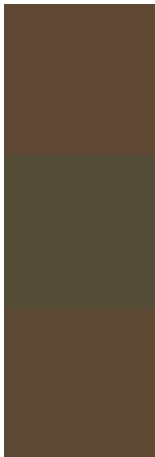
This preview shows how white text looks on a background with the HunterLab color 27.3039, 2.8478,

9.5605.

Color Blindness Simulation

Color vision deficiency is a very complex topic, and I could not describe the different causes any better than Wikipedia does, so if you want to learn more, you should check out their [article about color blindness](#).

Dichromacy



Original Color

27.3039, 2.8478, 9.5605

Protanopia

27.2444, -2.3999, 8.8801

Deuteranopia

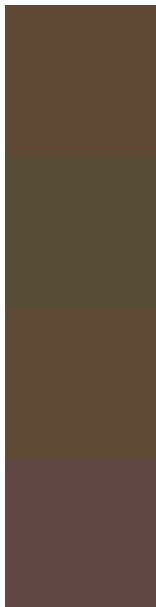
27.3528, 1.7654, 9.5847



Tritanopia

27.2575, 7.2422, 2.4434

Trichromacy



Original Color

27.3039, 2.8478, 9.5605

Protanomaly

27.3157, -0.8781, 9.2411

Deuteranomaly

27.4486, 2.0870, 9.6749

Tritanomaly

27.2002, 5.4913, 5.2818

Monochromacy



Original Color

27.3039, 2.8478, 9.5605

Achromatopsia

27.2422, -1.4536, 1.4801

Achromatomaly

27.3332, -0.2650, 4.9752

CSS Examples

Text

The CSS property to change the color of the text to HunterLab 27.3039, 2.8478, 9.5605 is called "color". The color property can be set on classes, ids or directly on the HTML element.

This example shows how text in the color `rgb(95, 73, 53)` looks like.

```
.text, #text, p{  
    color:rgb(95, 73, 53)  
}
```

If you want to add a text shadow in that color use the text-shadow property, you can generate a text shadow directly with our [CSS Text Shadow Generator](#).

Here you see how black text with a 4 pixel rgb(95, 73, 53) colored shadow looks like.

```
.shadow{ text-shadow: 4px 4px 2px rgb(95, 73, 53) }
```

Border

The CSS property to change the border of an element to HunterLab 27.3039, 2.8478, 9.5605 is called "border". The border property can be set on classes, ids or directly on the HTML element.

This example shows the color as border, it can be applied via the CSS property "border" or "border-color".

```
.border, #border, table{ border:4px solid rgb(95, 73, 53) }
```


If only the border color should be changed use the property `border-color`.

```
.border{ border-color:rgb(95, 73, 53) }
```

If you want to add a box shadow in that color use:

Here you see how a box with a 4 pixel `rgb(95, 73, 53)` colored shadow looks like.

```
.boxshadow{ -moz-box-shadow:4px 4px 4px  
4px rgb(95, 73, 53); -webkit-box-  
shadow:4px 4px 4px 4px rgb(95, 73, 53);  
box-shadow:4px 4px 4px 4px rgb(95, 73, 53)  
}
```

Background

The CSS property to change the background color of an element to HunterLab 27.3039, 2.8478, 9.5605 is called "background". The background property can be set on classes, ids or directly on the HTML element.

```
.background, #background, body{  
background: rgb(95, 73, 53) }
```

If only the background color should be changed can be used:

```
.background{ background-color: rgb(95, 73,  
53) }
```

This example shows the color as background, it is applied via the CSS property "background".

To optimize and compress your CSS code, you can use our [online CSS compressor and optimizer](#) based on csstidy. If you want to create a linear or radial gradient as background or border, check our [CSS Gradient Generator](#).

Hey! You found this booklet interesting? Support Converting Colors with the new Membership Option!

The pro membership hides all ads, plus gives you double the colors in the color bucket, and more awesome pro features!

[Learn more, Memberships starting at \\$2.50/m!](#)

**Follow me
on Twitter!**

@ConvertingColor