

Converting Colors

HunterLab(27.2271, 6.0242,
1.8472)

Have a look what the booklet for
HunterLab(27.2271, 6.0242, 1.8472)
contains.

HunterLab(27.2176, 5.9754, 1.9814)	3
<i>Conversions</i>	4
<i>Details</i>	6
<i>Harmonies</i>	12
<i>Previews</i>	24
<i>Color Blindness Simulation</i>	28
<i>CSS Examples</i>	31

Color

**HunterLab(27.2176, 5.9754,
1.9814)**

Conversions

Conversions Part 1

Format	Color
Hex	5E474C
RGB	94, 71, 76
RGB Percent	37%, 28%, 30%
CMY	0.6314, 0.7216, 0.7020
CMYK	0.00, 0.24, 0.19, 0.63
HSL	347°, 14%, 32%
HSV	347°, 24%, 37%
XYZ	8.1738, 7.4080, 7.8366
YIQ	78.4470, 12.1030, 6.4310

Conversions

Conversions Part 2

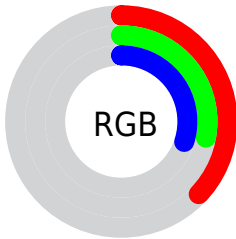
Format	Color
RYB	94, 71, 76
Decimal	6178636
CIELab	32.72, 10.70, 0.80
CIELCh	33, 10.735, 4.300
Yxy	7.4083, 0.3490, 0.3163
Android (android.graphics.Color)	4284368716 (0xFF5E474C)
YUV	78.4470, -1.2064, 13.6400
Hunter-Lab	27.2176, 5.9754, 1.9814

Details

The HunterLab color **27.2176, 5.9754, 1.9814** is a dark color, and the websafe version is hex **666666**. A complement of this color would be **31.7277, -8.2385, 1.7437**, and the grayscale version is **27.7643, -1.4814, 1.5085**.

A 20% lighter version of the original color is **45.7530, 6.1342, 3.1576**, and **12.2167, 5.2850, 0.9886** is the 20% darker color. If you saturate the color by 10%, you get **24.9141, 9.2777, 2.2534**, and if you desaturate by 10%, it is **29.6753, 2.7428, 1.8382**.

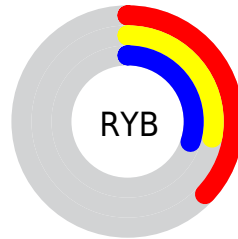
Distribution



Red (37%)

Green (28%)

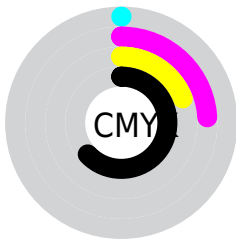
Blue (30%)



Red (37%)

Yellow (28%)

Blue (30%)

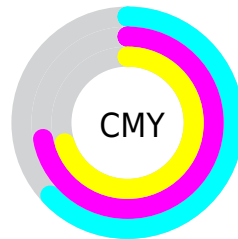


Cyan (0%)

Magenta (24%)

Yellow (19%)

Black (63%)



Cyan (63%)

Magenta (72%)

Yellow (70%)

Brightness & Saturation Gradients

These gradients show how the HunterLab color 27.2176, 5.9754, 1.9814 changes by changing the brightness by 10 percent. The first figure shows a shift by +10% for each color and the second figure -10%.

Similar to the brightness gradients but the following saturation gradients show a change of the HunterLab color 27.2176, 5.9754, 1.9814 by changing the saturation by 10% instead.

■ 27.2176, 5.9754,
1.9814

■ 27.2176, 5.9754,
1.9814

■ 130.7726, 5.1465,
7.9678

■ 19.2840, 5.6782,
1.4946

■ 45.5961, 6.2587,
3.0778

■ 12.3187, 5.2466,
1.0521

■ 55.9026, 6.2772,
3.6812

■ 5.4864, 8.2093,
0.9068

■ 66.8864, 6.2268,
4.3189

0.0000, NaN, NaN

0.0000, NaN, NaN

■ 78.5080, 6.1146,
4.9891

0.0000, NaN, NaN

■ 90.7342, 5.9462,
5.6903

0.0000, NaN, NaN

103.5364, 5.7264,

0.0000, NaN, NaN

116.8898, 5.4587,
7.1808

■ 27.2176, 5.9754,
1.9814

■ 27.2176, 5.9754,
1.9814

■ 24.9141, 9.2777,
2.2534

■ 29.6753, 2.7428,
1.8382

■ 22.7899, 12.6199,
2.6728

■ 32.2633, -0.4060,
1.8030

■ 20.8777, 15.9342,
3.2573

■ 34.9643, -3.4722,
1.8592

■ 19.2138, 19.1045,
4.0142

■ 37.7640, -6.4621,
1.9922

■ 17.8353, 21.9579,
4.9314

■ 40.6505, -9.3844,
2.1899

■ 16.7742, 24.2793,
5.9670

■ 43.6145, -12.2484,
2.4427

■ 16.0021, 26.0156,
7.0120

■ 46.6480, -15.0630,
2.7425

■ 15.5941, 27.0391,
7.4893

■ 49.7447, -17.8363,
3.0827

■ 52.8990, -20.5756,
3.4579

Harmonies

Analogous

The Analogous color harmony consists of three colors that are next to each other on the color wheel.



27.2182, 5.2262, -1.6049



27.2176, 5.9754, 1.9814



27.2182, 4.6472, 5.0112

Triad

The Triadic color harmony groups three colors that are evenly spaced from another and form a triangle on the color wheel.



27.2182, 5.9744, 1.9819



27.2182, -5.3308, 6.4800



27.2182, -4.4573, -5.3149

Complementary

The Complementary color scheme is a pair of colors which are on the opposite of each other on the color wheel.



27.2176, 5.9754, 1.9814



31.7277, -8.2385, 1.7437

Split Complementary

Split-complementary colors differ from the complementary color scheme. The scheme consists of three colors, the original color and two neighbors of the complement color.



27.2182, -7.0606, -2.5949



27.2176, 5.9754, 1.9814



27.2182, -7.5458, 4.2441

Square

The Square scheme is like the rectangle color scheme, but the four colors are evenly spaced on the color wheel.



27.2182, 5.9744, 1.9819



27.2182, -1.9827, 7.3797



27.2182, -8.1619, 0.9716



27.2182, -0.9207, -6.1289

Rectangle

The Rectangle color scheme consists of four colors that form a rectangle on the color wheel.



27.2176, 5.9754, 1.9814



27.2182, 2.8034, 6.4044



27.2182, -8.1619, 0.9716



27.2182, -5.4643, -4.5769

Sweetspot

The Sweet Spot groups the original color and five complimentary colors.



27.2182, 5.9744, 1.9819



41.7342, 0.5982, 2.3857



27.2411, 7.0988, -6.1384



20.3849, 0.3460, 1.1681



71.2094, -3.7996, 3.8689



21.6712, -1.1563, 1.1774

Same Dimension

The Same Dimension uses a secret algorithm to generate beautiful new colors.



27.2182, 5.9744, 1.9819



34.3322, 10.2715, 2.7951



28.5681, 2.5964, 5.2762



15.3470, 0.4680, 0.8905



18.3244, 31.7371, 9.0809



42.7483, 73.7780, 23.2021

Inverse Universe

The Inverse Universe completely reimagines the original color for something new.



27.2182, 5.9744, 1.9819



34.3322, 10.2715, 2.7951



30.1754, -4.9042, -2.2991



15.3470, 0.4680, 0.8905



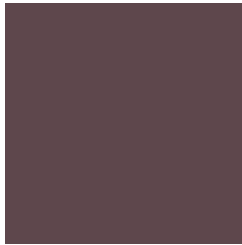
18.3244, 31.7371, 9.0809



42.7483, 73.7780, 23.2021

Previews

White Background



This preview shows how the HunterLab color 27.2176, 5.9754, 1.9814 looks on a white background.

Color Contrast Check

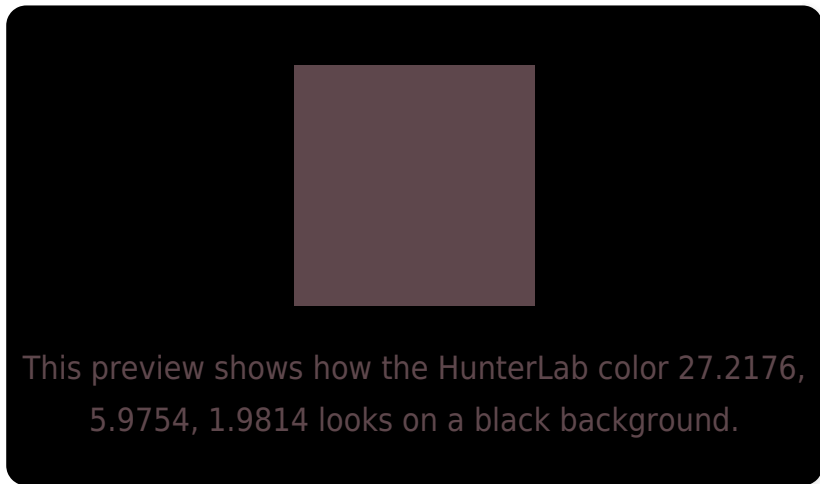
Large Text (above 18pt) WCAG AA ✓ Pass

Any Text WCAG AA ✓ Pass

Large Text (above 18pt) WCAG AAA ✓ Pass

Any Text WCAG AAA ✓ Pass

Black Background



Color Contrast Check

Large Text (above 18pt) WCAG AA × Fail

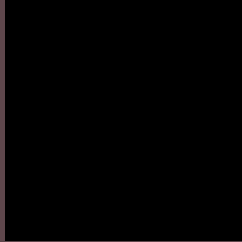
Any Text WCAG AA × Fail

Large Text (above 18pt) WCAG AAA × Fail

Any Text WCAG AAA × Fail

If you want to check with other color combinations, try the [Color Contrast Checker](#).

HunterLab 27.2176, 5.9754, 1.9814 Background



This preview shows how black text looks on a background with the HunterLab color 27.2176, 5.9754, 1.9814.

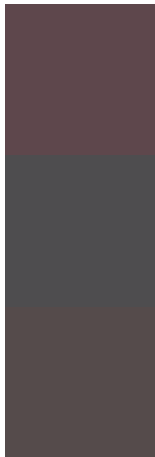


This preview shows how white text looks on a background with the HunterLab color 27.2176, 5.9754,

Color Blindness Simulation

Color vision deficiency is a very complex topic, and I could not describe the different causes any better than Wikipedia does, so if you want to learn more, you should check out their [article about color blindness](#).

Dichromacy



Original Color

27.2176, 5.9754, 1.9814

Protanopia

27.3715, -0.9001, 0.8273

Deuteranopia

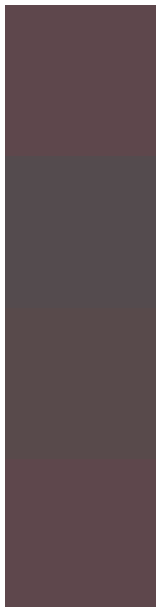
27.3340, 1.3546, 2.4279



Tritanopia

27.2176, 5.9754, 1.9814

Trichromacy



Original Color

27.2176, 5.9754, 1.9814

Protanomaly

27.3259, 1.4813, 1.2251

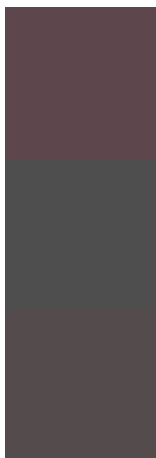
Deuteranomaly

27.3501, 2.6738, 2.4695

Tritanomaly

27.2176, 5.9754, 1.9814

Monochromacy



Original Color

27.2176, 5.9754, 1.9814

Achromatopsia

27.6017, -1.4728, 1.4997

Achromatomaly

27.2998, 1.3412, 1.5968

CSS Examples

Text

The CSS property to change the color of the text to HunterLab 27.2176, 5.9754, 1.9814 is called "color". The color property can be set on classes, ids or directly on the HTML element.

This example shows how text in the color `rgb(94, 71, 76)` looks like.

```
.text, #text, p{  
    color:rgb(94, 71, 76)  
}
```

If you want to add a text shadow in that color use the text-shadow property, you can generate a text shadow directly with our [CSS Text Shadow Generator](#).

Here you see how black text with a 4 pixel rgb(94, 71, 76) colored shadow looks like.

```
.shadow{ text-shadow: 4px 4px 2px rgb(94, 71, 76) }
```

Border

The CSS property to change the border of an element to HunterLab 27.2176, 5.9754, 1.9814 is called "border".

The border property can be set on classes, ids or directly on the HTML element.

This example shows the color as border, it can be applied via the CSS property "border" or "border-color".

```
.border, #border, table{ border:4px solid rgb(94, 71, 76) }
```


If only the border color should be changed use the property border-color.

```
.border{ border-color:rgb(94, 71, 76) }
```

If you want to add a box shadow in that color use:

Here you see how a box with a 4 pixel rgb(94, 71, 76) colored shadow looks like.

```
.boxshadow{ -moz-box-shadow:4px 4px 4px  
4px rgb(94, 71, 76); -webkit-box-  
shadow:4px 4px 4px 4px rgb(94, 71, 76);  
box-shadow:4px 4px 4px 4px rgb(94, 71, 76)  
}
```

Background

The CSS property to change the background color of an element to HunterLab 27.2176, 5.9754, 1.9814 is called "background". The background property can be set on classes, ids or directly on the HTML element.

```
.background, #background, body{  
background: rgb(94, 71, 76) }
```

If only the background color should be changed can be used:

```
.background{ background-color: rgb(94, 71,  
76) }
```

This example shows the color as background, it is applied via the CSS property "background".

To optimize and compress your CSS code, you can use our [online CSS compressor and optimizer](#) based on csstidy. If you want to create a linear or radial gradient as background or border, check our [CSS Gradient Generator](#).

Hey! You found this booklet interesting? Support Converting Colors with the new Membership Option!

The pro membership hides all ads, plus gives you double the colors in the color bucket, and more awesome pro features!

[Learn more, Memberships starting at \\$2.50/m!](#)

**Follow me
on Twitter!**

@ConvertingColor