

Converting Colors

HunterLab(27.3480, 4.8545,
0.5509)

Have a look what the booklet for
HunterLab(27.3480, 4.8545, 0.5509)
contains.

HunterLab(27.2728, 5.1542, 0.3965)	3
<i>Conversions</i>	4
<i>Details</i>	6
<i>Harmonies</i>	12
<i>Previews</i>	24
<i>Color Blindness Simulation</i>	28
<i>CSS Examples</i>	31

Color

**HunterLab(27.2728, 5.1542,
0.3965)**

Conversions

Conversions Part 1

Format	Color
Hex	5B4850
RGB	91, 72, 80
RGB Percent	36%, 28%, 31%
CMY	0.6431, 0.7176, 0.6863
CMYK	0.00, 0.21, 0.12, 0.64
HSL	335°, 12%, 32%
HSV	335°, 21%, 36%
XYZ	8.0797, 7.4381, 8.5993
YIQ	78.5930, 8.7560, 6.5160

Conversions

Conversions Part 2

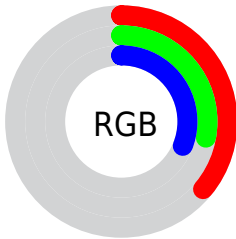
Format	Color
RYB	91, 72, 80
Decimal	5982288
CIELab	32.78, 9.57, -1.70
CIELCh	33, 9.720, 349.943
Yxy	7.4384, 0.3350, 0.3084
Android (android.graphics.Color)	4284172368 (0xFF5B4850)
YUV	78.5930, 0.6937, 10.8809
Hunter-Lab	27.2728, 5.1542, 0.3965

Details

The HunterLab color $[27.2728, 5.1542, 0.3965]$ is a dark color, and the websafe version is hex 666666 . A complement of this color would be $[30.7971, -7.6707, 3.0870]$, and the grayscale version is $[27.8111, -1.4839, 1.5110]$.

A 20% lighter version of the original color is $[45.7411, 4.9643, 1.3515]$, and $[12.3117, 4.7820, -0.3677]$ is the 20% darker color. If you saturate the color by 10%, you get $[25.0453, 8.5358, -0.0622]$, and if you desaturate by 10%, it is $[29.6385, 1.8231, 0.9901]$.

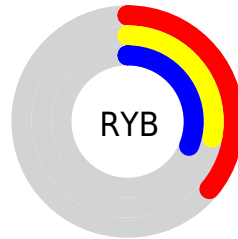
Distribution



Red (36%)

Green (28%)

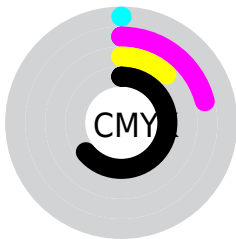
Blue (31%)



Red (36%)

Yellow (28%)

Blue (31%)

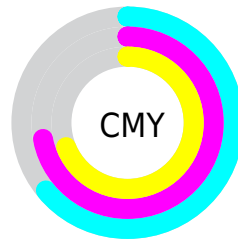


Cyan (0%)

Magenta (21%)

Yellow (12%)

Black (64%)



Cyan (64%)

Magenta (72%)

Yellow (69%)

Brightness & Saturation Gradients

These gradients show how the HunterLab color 27.2728, 5.1542, 0.3965 changes by changing the brightness by 10 percent. The first figure shows a shift by +10% for each color and the second figure -10%.

Similar to the brightness gradients but the following saturation gradients show a change of the HunterLab color 27.2728, 5.1542, 0.3965 by changing the saturation by 10% instead.

■ 27.2728, 5.1542,
0.3965

■ 27.2728, 5.1542,
0.3965

■ 130.8657, 3.8383,
5.3128

■ 19.3333, 4.9295,
0.0776

■ 45.6616, 5.3082,
1.2016

■ 12.3611, 4.5770,
-0.1742

■ 55.9727, 5.2679,
1.6752

■ 5.5524, 7.2145,
-0.9649

■ 66.9608, 5.1619,
2.1909

0.0000, NaN, NaN

0.0000, NaN, NaN

■ 78.5865, 4.9968,
2.7457

0.0000, NaN, NaN

■ 90.8166, 4.7780,
3.3372

0.0000, NaN, NaN

103.6225, 4.5097,

0.0000, NaN, NaN

3.9634

0.0000, NaN, NaN

116.9795, 4.1954,
4.6224

■ 27.2728, 5.1542,
0.3965

■ 27.2728, 5.1542,
0.3965

■ 25.0453, 8.5358,
-0.0622

■ 29.6385, 1.8231,
0.9901

■ 22.9773, 11.9399,
-0.3556

■ 32.1218, -1.4426,
1.6914

■ 21.0966, 15.3063,
-0.4457

■ 34.7077, -4.6421,
2.4806

■ 19.4344, 18.5339,
-0.2922

■ 37.3838, -7.7791,
3.3420

■ 18.0236, 21.4714,
0.1401

■ 40.1397, -10.8600,
4.2634

■ 16.8946, 23.9246,
0.8681

■ 42.9671, -13.8920,
5.2354

■ 16.0614, 25.7131,
1.8682

■ 45.8589, -16.8824,
6.2505

■ 15.3822, 27.2654,
2.7858

■ 48.8094, -19.8379,
7.3030

■ 51.8137, -22.7646,
8.3881

Harmonies

Analogous

The Analogous color harmony consists of three colors that are next to each other on the color wheel.



27.2734, 3.6305, -2.7430



27.2728, 5.1542, 0.3965



27.2734, 4.8411, 3.4856

Triad

The Triadic color harmony groups three colors that are evenly spaced from another and form a triangle on the color wheel.



27.2734, 5.1533, 0.3970



27.2734, -3.6110, 6.6218



27.2734, -5.4645, -3.6129

Complementary

The Complementary color scheme is a pair of colors which are on the opposite of each other on the color wheel.



27.2728, 5.1542, 0.3965



30.7971, -7.6707, 3.0870

Split Complementary

Split-complementary colors differ from the complementary color scheme. The scheme consists of three colors, the original color and two neighbors of the complement color.



27.2734, -7.2303, -0.6806



27.2728, 5.1542, 0.3965



27.2734, -6.1964, 5.1279

Square

The Square scheme is like the rectangle color scheme, but the four colors are evenly spaced on the color wheel.



27.2734, 5.1533, 0.3970



27.2734, -0.3271, 6.8369



27.2734, -7.4916, 2.5291



27.2734, -2.5682, -5.2355

Rectangle

The Rectangle color scheme consists of four colors that form a rectangle on the color wheel.



27.2728, 5.1542, 0.3965



27.2734, 3.6393, 5.1200



27.2734, -7.4916, 2.5291



27.2734, -6.2040, -2.7324

Sweetspot

The Sweet Spot groups the original color and five complimentary colors.



27.2734, 5.1533, 0.3970



40.2598, 0.3695, 1.7090



26.8679, 4.4872, -5.2069



19.7399, 0.2520, 0.8252



70.1359, -3.7423, 3.8106



20.7927, -1.1094, 1.1297

Same Dimension

The Same Dimension uses a secret algorithm to generate beautiful new colors.



27.2734, 5.1533, 0.3970



34.2117, 8.8963, 0.2009



27.3726, 3.5135, 3.6478



15.3692, 0.5878, 0.5737



18.6846, 33.0605, 3.8366



43.5286, 76.6507, 11.7968

Inverse Universe

The Inverse Universe completely reimagines the original color for something new.



27.2734, 5.1533, 0.3970



34.2117, 8.8963, 0.2009



30.6605, -5.9474, -0.3509



15.3692, 0.5878, 0.5737



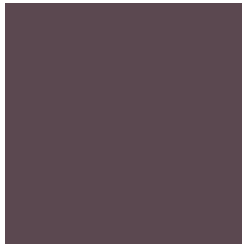
18.6846, 33.0605, 3.8366



43.5286, 76.6507, 11.7968

Previews

White Background



This preview shows how the HunterLab color 27.2728, 5.1542, 0.3965 looks on a white background.

Color Contrast Check

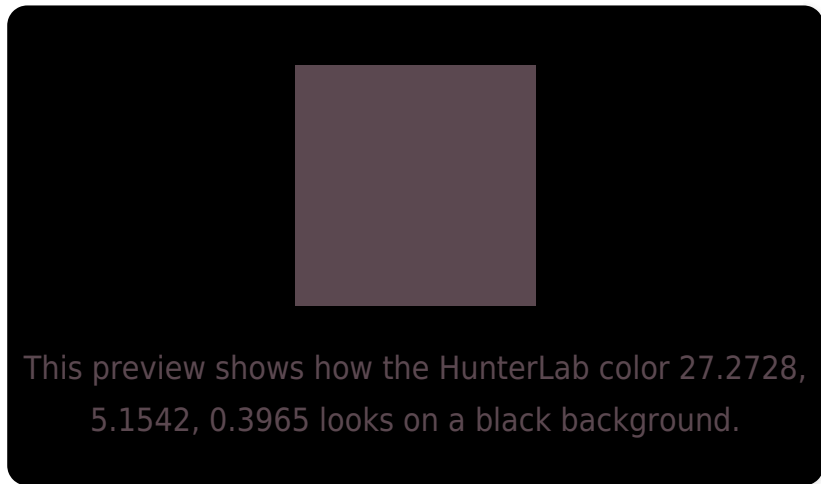
Large Text (above 18pt) WCAG AA ✓ Pass

Any Text WCAG AA ✓ Pass

Large Text (above 18pt) WCAG AAA ✓ Pass

Any Text WCAG AAA ✓ Pass

Black Background



Color Contrast Check

Large Text (above 18pt) WCAG AA × Fail

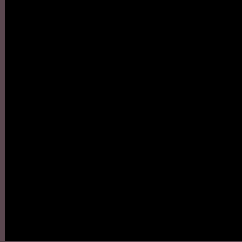
Any Text WCAG AA × Fail

Large Text (above 18pt) WCAG AAA × Fail

Any Text WCAG AAA × Fail

If you want to check with other color combinations, try the [Color Contrast Checker](#).

HunterLab 27.2728, 5.1542, 0.3965 Background



This preview shows how black text looks on a background with the HunterLab color 27.2728, 5.1542, 0.3965.



This preview shows how white text looks on a background with the HunterLab color 27.2728, 5.1542,

0.3965.

Color Blindness Simulation

Color vision deficiency is a very complex topic, and I could not describe the different causes any better than Wikipedia does, so if you want to learn more, you should check out their [article about color blindness](#).

Dichromacy



Original Color

27.2728, 5.1542, 0.3965

Protanopia

27.4045, -0.5669, -0.8288

Deuteranopia

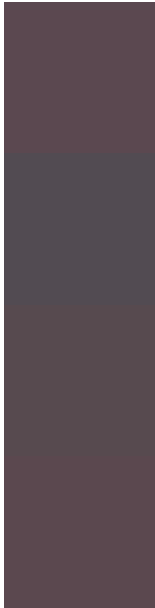
27.3523, 1.6232, 0.8484



Tritanopia

27.2194, 4.8740, 1.1577

Trichromacy



Original Color

27.2728, 5.1542, 0.3965

Protanomaly

27.2675, 1.5013, -0.5289

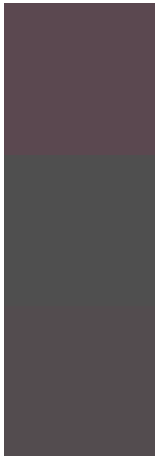
Deuteranomaly

27.3648, 2.9292, 0.8863

Tritanomaly

27.2459, 5.0132, 0.7796

Monochromacy



Original Color

27.2728, 5.1542, 0.3965

Achromatopsia

27.9620, -1.4920, 1.5192

Achromatomaly

27.5180, 0.9022, 1.0344

CSS Examples

Text

The CSS property to change the color of the text to HunterLab 27.2728, 5.1542, 0.3965 is called "color". The color property can be set on classes, ids or directly on the HTML element.

This example shows how text in the color `rgb(91, 72, 80)` looks like.

```
.text, #text, p{  
    color:rgb(91, 72, 80)  
}
```

If you want to add a text shadow in that color use the text-shadow property, you can generate a text shadow directly with our [CSS Text Shadow Generator](#).

Here you see how black text with a 4 pixel rgb(91, 72, 80) colored shadow looks like.

```
.shadow{ text-shadow: 4px 4px 2px rgb(91, 72, 80) }
```

Border

The CSS property to change the border of an element to HunterLab 27.2728, 5.1542, 0.3965 is called "border". The border property can be set on classes, ids or directly on the HTML element.

This example shows the color as border, it can be applied via the CSS property "border" or "border-color".

```
.border, #border, table{ border:4px solid rgb(91, 72, 80) }
```


If only the border color should be changed use the property `border-color`.

```
.border{ border-color:rgb(91, 72, 80) }
```

If you want to add a box shadow in that color use:

Here you see how a box with a 4 pixel `rgb(91, 72, 80)` colored shadow looks like.

```
.boxshadow{ -moz-box-shadow:4px 4px 4px  
4px rgb(91, 72, 80); -webkit-box-  
shadow:4px 4px 4px 4px rgb(91, 72, 80);  
box-shadow:4px 4px 4px 4px rgb(91, 72, 80)  
}
```

Background

The CSS property to change the background color of an element to HunterLab 27.2728, 5.1542, 0.3965 is called "background". The background property can be set on classes, ids or directly on the HTML element.

```
.background, #background, body{  
background: rgb(91, 72, 80) }
```

If only the background color should be changed can be used:

```
.background{ background-color: rgb(91, 72,  
80) }
```

This example shows the color as background, it is applied via the CSS property "background".

To optimize and compress your CSS code, you can use our [online CSS compressor and optimizer](#) based on csstidy. If you want to create a linear or radial gradient as background or border, check our [CSS Gradient Generator](#).

Hey! You found this booklet interesting? Support Converting Colors with the new Membership Option!

The pro membership hides all ads, plus gives you double the colors in the color bucket, and more awesome pro features!

[Learn more, Memberships starting at \\$2.50/m!](#)

**Follow me
on Twitter!**

@ConvertingColor