

Converting Colors

HunterLab(27.4547, 0.9801,
6.8854)

Have a look what the booklet for
HunterLab(27.4547, 0.9801, 6.8854)
contains.

HunterLab(27.4133, 1.0781, 6.7399)	3
<i>Conversions</i>	4
<i>Details</i>	6
<i>Harmonies</i>	12
<i>Previews</i>	24
<i>Color Blindness Simulation</i>	28
<i>CSS Examples</i>	31

Color

**HunterLab(27.4133, 1.0781,
6.7399)**

Conversions

Conversions Part 1

Format	Color
Hex	594B3F
RGB	89, 75, 63
RGB Percent	35%, 29%, 25%
CMY	0.6510, 0.7059, 0.7529
CMYK	0.00, 0.16, 0.29, 0.65
HSL	28°, 17%, 30%
HSV	28°, 29%, 35%
XYZ	7.5331, 7.5149, 5.7561
YIQ	77.8180, 12.1960, -0.7640

Conversions

Conversions Part 2

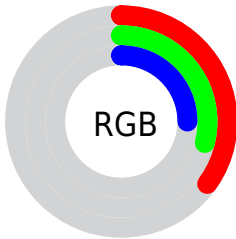
Format	Color
RYB	89, 85, 63
Decimal	5851967
CIELab	32.95, 3.78, 9.34
CIELCh	33, 10.072, 67.987
Yxy	7.5152, 0.3621, 0.3612
Android (android.graphics.Color)	4284042047 (0xFF594B3F)
YUV	77.8180, -7.3053, 9.8066
Hunter-Lab	27.4133, 1.0781, 6.7399

Details

The HunterLab color **27.4133, 1.0781, 6.7399** is a dark color, and the websafe version is hex **666666**. A complement of this color would be **26.6188, -2.9490, -4.7007**, and the grayscale version is **27.5591, -1.4705, 1.4973**.

A 20% lighter version of the original color is **45.8824, 0.3313, 8.8448**, and **12.4407, 1.4957, 4.3109** is the 20% darker color. If you saturate the color by 10%, you get **26.0728, 2.2376, 8.1405**, and if you desaturate by 10%, it is **28.8056, 0.0307, 5.1663**.

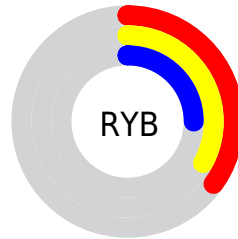
Distribution



Red (35%)

Green (29%)

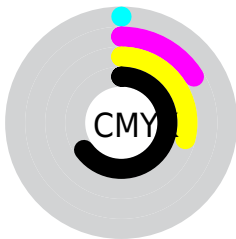
Blue (25%)



Red (35%)

Yellow (33%)

Blue (25%)

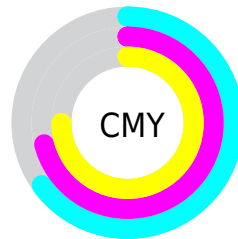


Cyan (0%)

Magenta (16%)

Yellow (29%)

Black (65%)



Cyan (65%)

Magenta (71%)

Yellow (75%)

Brightness & Saturation Gradients

These gradients show how the HunterLab color 27.4133, 1.0781, 6.7399 changes by changing the brightness by 10 percent. The first figure shows a shift by +10% for each color and the second figure -10%.

Similar to the brightness gradients but the following saturation gradients show a change of the HunterLab color 27.4133, 1.0781, 6.7399 by changing the saturation by 10% instead.

■ 27.4133, 1.0781,
6.7399

■ 27.4133, 1.0781,
6.7399

■ 131.1025, -2.7698,
16.6520

■ 19.4586, 1.2380,
5.6042

■ 45.8284, 0.5529,
8.9327

■ 12.4691, 1.3126,
4.4088

■ 56.1512, 0.2066,
10.0163

■ 5.7169, 2.5721,
4.0018

■ 67.1503, -0.1881,
11.1010

0.0000, NaN, NaN

0.0000, NaN, NaN

■ 78.7864, -0.6272,
12.1912

0.0000, NaN, NaN

■ 91.0263, -1.1074,
13.2897

0.0000, NaN, NaN

0.0000, NaN, NaN

■ 103.8417, -1.6260,

14.3984

0.0000, NaN, NaN

117.2077, -2.1808,
15.5188

■ 27.4133, 1.0781,
6.7399

■ 27.4133, 1.0781,
6.7399

■ 26.0728, 2.2376,
8.1405

■ 28.8056, 0.0307,
5.1663

■ 24.7866, 3.5180,
9.3480

■ 30.2439, -0.9089,
3.4360

■ 23.5604, 4.9225,
10.3430

■ 31.7249, -1.7492,
1.5652

■ 22.3994, 6.4519,
11.1059

■ 33.2454, -2.4977,
-0.4320

■ 21.3090, 8.1024,
11.6197

■ 34.8025, -3.1618,
-2.5433

■ 20.2946, 9.8633,
11.8727

■ 36.3936, -3.7485,
-4.7577

■ 19.3477, 11.6496,
12.0643

■ 38.0163, -4.2642,
-7.0658

■ 19.2758, 11.7883,
12.0840

■ 39.6685, -4.7150,
-9.4592

■ 41.3484, -5.1063,
-11.9307

Harmonies

Analogous

The Analogous color harmony consists of three colors that are next to each other on the color wheel.



27.4139, 3.9852, 5.1124



27.4133, 1.0781, 6.7399



27.4139, -2.3835, 7.0543

Triad

The Triadic color harmony groups three colors that are evenly spaced from another and form a triangle on the color wheel.



27.4139, 1.0772, 6.7403



27.4139, -7.7531, 0.5972



27.4139, 2.7568, -3.9858

Complementary

The Complementary color scheme is a pair of colors which are on the opposite of each other on the color wheel.



27.4133, 1.0781, 6.7399



26.6188, -2.9490, -4.7007

Split Complementary

Split-complementary colors differ from the complementary color scheme. The scheme consists of three colors, the original color and two neighbors of the complement color.



27.4139, -0.5326, -5.5529



27.4133, 1.0781, 6.7399



27.4139, -6.5186, -2.7008

Square

The Square scheme is like the rectangle color scheme, but the four colors are evenly spaced on the color wheel.



27.4139, 1.0772, 6.7403



27.4139, -7.3698, 3.7624



27.4139, -3.9162, -5.0556



27.4139, 4.9880, -0.9904

Rectangle

The Rectangle color scheme consists of four colors that form a rectangle on the color wheel.



27.4133, 1.0781, 6.7399



27.4139, -4.5203, 6.5183



27.4139, -3.9162, -5.0556



27.4139, 1.7319, -4.7130

Sweetspot

The Sweet Spot groups the original color and five complimentary colors.



27.4139, 1.0772, 6.7403



39.5143, -1.1797, 4.5075



24.9380, 8.2350, -1.3145



19.7941, -0.5354, 2.3860



70.1359, -3.7423, 3.8106



20.7927, -1.1094, 1.1297

Same Dimension

The Same Dimension uses a secret algorithm to generate beautiful new colors.



27.4139, 1.0772, 6.7403



34.6141, 2.4363, 10.0960



30.6807, -4.3418, 9.7414



15.0159, -0.4707, 1.6604



23.1636, 14.8871, 14.5340



53.2745, 39.1937, 33.5136

Inverse Universe

The Inverse Universe completely reimagines the original color for something new.



26.6188, -2.9490, -4.7007



33.3399, -3.9932, -8.2363



23.4069, 2.5326, -9.4725



14.8954, -1.0835, -0.0723



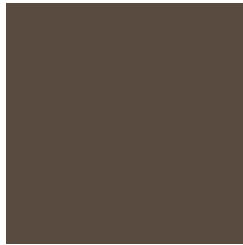
20.1387, 1.5864, -28.5961



45.7983, 7.3039, -73.0109

Previews

White Background



This preview shows how the HunterLab color 27.4133, 1.0781, 6.7399 looks on a white background.

Color Contrast Check

Large Text (above 18pt) WCAG AA ✓ Pass

Any Text WCAG AA ✓ Pass

Large Text (above 18pt) WCAG AAA ✓ Pass

Any Text WCAG AAA ✓ Pass

Black Background



This preview shows how the HunterLab color 27.4133, 1.0781, 6.7399 looks on a black background.

Color Contrast Check

Large Text (above 18pt) WCAG AA × Fail

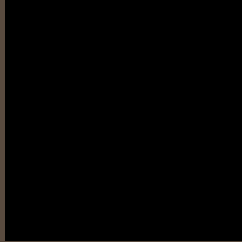
Any Text WCAG AA × Fail

Large Text (above 18pt) WCAG AAA × Fail

Any Text WCAG AAA × Fail

If you want to check with other color combinations, try the [Color Contrast Checker](#).

HunterLab 27.4133, 1.0781, 6.7399 Background



This preview shows how black text looks on a background with the HunterLab color 27.4133, 1.0781, 6.7399.



This preview shows how white text looks on a background with the HunterLab color 27.4133, 1.0781,

Color Blindness Simulation

Color vision deficiency is a very complex topic, and I could not describe the different causes any better than Wikipedia does, so if you want to learn more, you should check out their [article about color blindness](#).

Dichromacy



Original Color

27.4133, 1.0781, 6.7399

Protanopia

27.3345, -1.7389, 6.2920

Deuteranopia

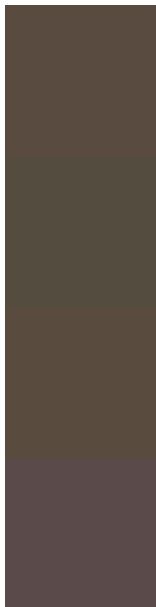
27.5040, 1.3847, 6.8347



Tritanopia

27.4578, 4.4246, 1.4331

Trichromacy



Original Color

27.4133, 1.0781, 6.7399

Protanomaly

27.3319, -0.4421, 6.3121

Deuteranomaly

27.5040, 1.3847, 6.8347

Tritanomaly

27.4814, 3.0116, 3.3874

Monochromacy



Original Color

27.4133, 1.0781, 6.7399

Achromatopsia

27.6017, -1.4728, 1.4997

Achromatomaly

27.5366, -0.6340, 3.3849

CSS Examples

Text

The CSS property to change the color of the text to HunterLab 27.4133, 1.0781, 6.7399 is called "color". The color property can be set on classes, ids or directly on the HTML element.

This example shows how text in the color `rgb(89, 75, 63)` looks like.

```
.text, #text, p{  
    color:rgb(89, 75, 63)  
}
```

If you want to add a text shadow in that color use the text-shadow property, you can generate a text shadow directly with our [CSS Text Shadow Generator](#).

Here you see how black text with a 4 pixel rgb(89, 75, 63) colored shadow looks like.

```
.shadow{ text-shadow: 4px 4px 2px rgb(89, 75, 63) }
```

Border

The CSS property to change the border of an element to HunterLab 27.4133, 1.0781, 6.7399 is called "border". The border property can be set on classes, ids or directly on the HTML element.

This example shows the color as border, it can be applied via the CSS property "border" or "border-color".

```
.border, #border, table{ border:4px solid rgb(89, 75, 63) }
```


If only the border color should be changed use the property `border-color`.

```
.border{ border-color:rgb(89, 75, 63) }
```

If you want to add a box shadow in that color use:

Here you see how a box with a 4 pixel `rgb(89, 75, 63)` colored shadow looks like.

```
.boxshadow{ -moz-box-shadow:4px 4px 4px  
4px rgb(89, 75, 63); -webkit-box-  
shadow:4px 4px 4px 4px rgb(89, 75, 63);  
box-shadow:4px 4px 4px 4px rgb(89, 75, 63)  
}
```

Background

The CSS property to change the background color of an element to HunterLab 27.4133, 1.0781, 6.7399 is called "background". The background property can be set on classes, ids or directly on the HTML element.

```
.background, #background, body{  
background: rgb(89, 75, 63) }
```

If only the background color should be changed can be used:

```
.background{ background-color: rgb(89, 75,  
63) }
```

This example shows the color as background, it is applied via the CSS property "background".

To optimize and compress your CSS code, you can use our [online CSS compressor and optimizer](#) based on csstidy. If you want to create a linear or radial gradient as background or border, check our [CSS Gradient Generator](#).

Hey! You found this booklet interesting? Support Converting Colors with the new Membership Option!

The pro membership hides all ads, plus gives you double the colors in the color bucket, and more awesome pro features!

[Learn more, Memberships starting at \\$2.50/m!](#)

**Follow me
on Twitter!**

@ConvertingColor