

Converting Colors

HunterLab(27.6552, 1.3838,
4.2441)

Have a look what the booklet for
HunterLab(27.6552, 1.3838, 4.2441)
contains.

HunterLab(27.7462, 1.2783, 4.3811)	3
<i>Conversions</i>	4
<i>Details</i>	6
<i>Harmonies</i>	12
<i>Previews</i>	24
<i>Color Blindness Simulation</i>	28
<i>CSS Examples</i>	31

Color

**HunterLab(27.7462, 1.2783,
4.3811)**

Conversions

Conversions Part 1

Format	Color
Hex	584C47
RGB	88, 76, 71
RGB Percent	35%, 30%, 28%
CMY	0.6549, 0.7020, 0.7216
CMYK	0.00, 0.14, 0.19, 0.65
HSL	18°, 11%, 31%
HSV	18°, 19%, 35%
XYZ	7.7463, 7.6985, 7.0389
YIQ	79.0180, 8.7570, 0.9890

Conversions

Conversions Part 2

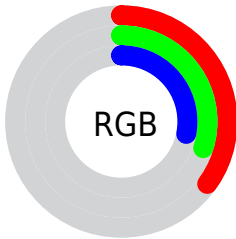
Format	Color
RYB	88, 78, 71
Decimal	5786695
CIELab	33.35, 4.08, 4.81
CIELCh	33, 6.308, 49.730
Yxy	7.6989, 0.3445, 0.3424
Android (android.graphics.Color)	4283976775 (0xFF584C47)
YUV	79.0180, -3.9529, 7.8772
Hunter-Lab	27.7462, 1.2783, 4.3811

Details

The HunterLab color $[27.7462, 1.2783, 4.3811]$ is a dark color, and the websafe version is hex 666666 . A complement of this color would be $[28.6888, -3.8322, -1.4698]$, and the grayscale version is $[27.9806, -1.4930, 1.5202]$.

A 20% lighter version of the original color is $[46.2627, 0.6245, 6.1505]$, and $[12.6850, 1.4551, 2.7070]$ is the 20% darker color. If you saturate the color by 10%, you get $[26.0365, 2.9521, 5.6513]$, and if you desaturate by 10%, it is $[29.5258, -0.2919, 3.0259]$.

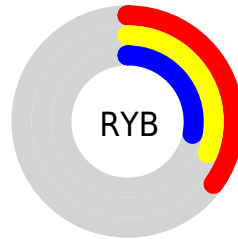
Distribution



 Red (35%)

 Green (30%)

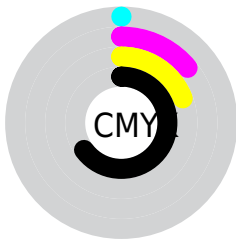
 Blue (28%)



 Red (35%)

 Yellow (31%)

 Blue (28%)

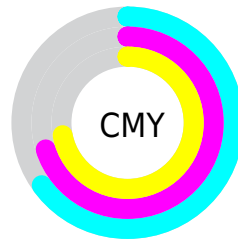


 Cyan (0%)

 Magenta (14%)

 Yellow (19%)

 Black (65%)



 Cyan (65%)

 Magenta (70%)

 Yellow (72%)

Brightness & Saturation Gradients

These gradients show how the HunterLab color 27.7462, 1.2783, 4.3811 changes by changing the brightness by 10 percent. The first figure shows a shift by +10% for each color and the second figure -10%.

Similar to the brightness gradients but the following saturation gradients show a change of the HunterLab color 27.7462, 1.2783, 4.3811 by changing the saturation by 10% instead.

■ 27.7462, 1.2783,
4.3811

■ 27.7462, 1.2783,
4.3811

■ 131.6627, -2.4521,
12.1734

■ 19.7557, 1.4208,
3.6018

■ 46.2233, 0.7844,
5.9766

■ 12.7255, 1.4761,
2.8211

■ 56.5737, 0.4523,
6.8002

■ 6.0878, 2.5934,
3.6086

■ 67.5986, 0.0709,
7.6435

0.0000, NaN, NaN

■ 79.2592, -0.3554,
8.5075

0.0000, NaN, NaN

■ 91.5224, -0.8235,
9.3924

0.0000, NaN, NaN

104.3600, -1.3304,

0.0000, NaN, NaN

117.7473, -1.8739,
11.2255

■ 27.7462, 1.2783,
4.3811

■ 27.7462, 1.2783,
4.3811

■ 26.0365, 2.9521,
5.6513

■ 29.5258, -0.2919,
3.0259

■ 24.4032, 4.7388,
6.8189

■ 31.3665, -1.7644,
1.5978

■ 22.8562, 6.6410,
7.8643

■ 33.2627, -3.1490,
0.1076

■ 21.4067, 8.6563,
8.7636

■ 35.2092, -4.4544,
-1.4360

■ 20.0666, 10.7727,
9.4897

■ 37.2017, -5.6891,
-3.0263

■ 18.8492, 12.9647,
10.0145

■ 39.2363, -6.8605,
-4.6580

■ 17.7678, 15.1879,
10.3135

■ 41.3097, -7.9757,
-6.3264

■ 16.8193, 17.3075,
10.6062

■ 43.4189, -9.0408,
-8.0281

■ 16.7593, 17.4446,
10.6324

■ 45.5615, -10.0613,
-9.7602

Harmonies

Analogous

The Analogous color harmony consists of three colors that are next to each other on the color wheel.



27.7468, 2.5714, 2.8220



27.7462, 1.2783, 4.3811



27.7468, -0.7313, 5.1516

Triad

The Triadic color harmony groups three colors that are evenly spaced from another and form a triangle on the color wheel.



27.7468, 1.2774, 4.3815



27.7468, -5.4840, 2.2113



27.7468, -0.0539, -2.5077

Complementary

The Complementary color scheme is a pair of colors which are on the opposite of each other on the color wheel.



27.7462, 1.2783, 4.3811



28.6888, -3.8322, -1.4698

Split Complementary

Split-complementary colors differ from the complementary color scheme. The scheme consists of three colors, the original color and two neighbors of the complement color.



27.7468, -2.2247, -2.7029



27.7462, 1.2783, 4.3811



27.7468, -5.3153, 0.1314

Square

The Square scheme is like the rectangle color scheme, but the four colors are evenly spaced on the color wheel.



27.7468, 1.2774, 4.3815



27.7468, -4.6059, 3.9642



27.7468, -4.1376, -1.7048



27.7468, 1.7865, -1.1903

Rectangle

The Rectangle color scheme consists of four colors that form a rectangle on the color wheel.



27.7462, 1.2783, 4.3811



27.7468, -2.1863, 5.1572



27.7468, -4.1376, -1.7048



27.7468, -0.7706, -2.7104

Sweetspot

The Sweet Spot groups the original color and five complimentary colors.



27.7468, 1.2774, 4.3815



39.7945, -1.0065, 3.4219



26.8489, 5.1786, -1.5191



19.9876, -0.4718, 1.7554



70.1359, -3.7423, 3.8106



20.7927, -1.1094, 1.1297

Same Dimension

The Same Dimension uses a secret algorithm to generate beautiful new colors.



27.7468, 1.2774, 4.3815



35.6744, 2.6555, 6.5553



29.8657, -2.3182, 6.5280



14.8493, -0.1887, 1.4776



20.3443, 22.1202, 12.9233



46.7478, 56.6402, 29.7974

Inverse Universe

The Inverse Universe completely reimagines the original color for something new.



28.6888, -3.8322, -1.4698



37.1974, -5.6168, -2.9104



26.5209, -0.2755, -4.3031



15.0660, -1.3621, 0.1325



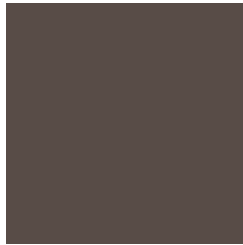
24.8515, -6.0305, -18.0440



57.5264, -12.2486, -45.4617

Previews

White Background



This preview shows how the HunterLab color 27.7462, 1.2783, 4.3811 looks on a white background.

Color Contrast Check

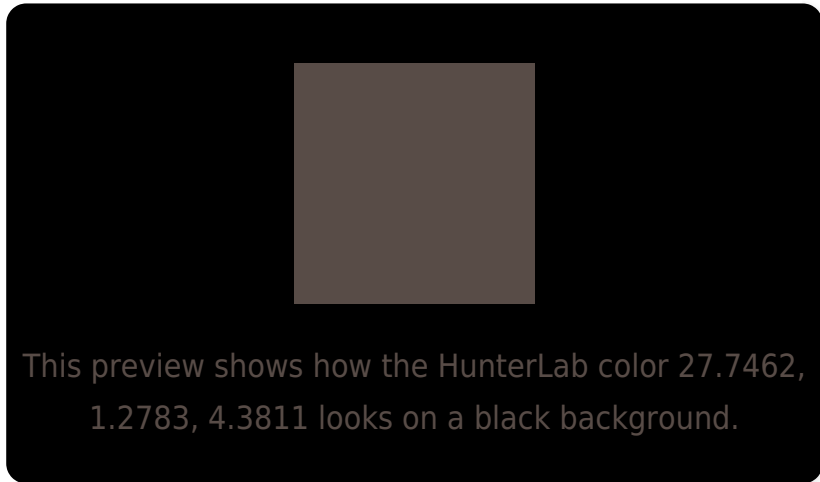
Large Text (above 18pt) WCAG AA ✓ Pass

Any Text WCAG AA ✓ Pass

Large Text (above 18pt) WCAG AAA ✓ Pass

Any Text WCAG AAA ✓ Pass

Black Background



Color Contrast Check

Large Text (above 18pt) WCAG AA × Fail

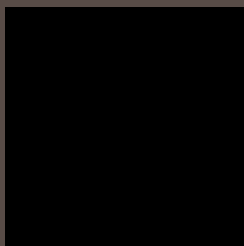
Any Text WCAG AA × Fail

Large Text (above 18pt) WCAG AAA × Fail

Any Text WCAG AAA × Fail

If you want to check with other color combinations, try the [Color Contrast Checker](#).

HunterLab 27.7462, 1.2783, 4.3811 Background



This preview shows how black text looks on a background with the HunterLab color 27.7462, 1.2783, 4.3811.



This preview shows how white text looks on a background with the HunterLab color 27.7462, 1.2783,

4.3811.

Color Blindness Simulation

Color vision deficiency is a very complex topic, and I could not describe the different causes any better than Wikipedia does, so if you want to learn more, you should check out their [article about color blindness](#).

Dichromacy



Original Color

27.7462, 1.2783, 4.3811

Protanopia

27.6875, -1.4715, 3.9065

Deuteranopia

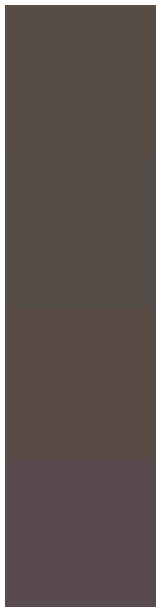
27.8346, 1.5766, 4.4813



Tritanopia

27.8122, 3.2113, 1.0149

Trichromacy



Original Color

27.7462, 1.2783, 4.3811

Protanomaly

27.6775, -0.1968, 3.9179

Deuteranomaly

27.8346, 1.5766, 4.4813

Tritanomaly

27.7341, 2.7962, 2.1287

Monochromacy



Original Color

27.7462, 1.2783, 4.3811

Achromatopsia

27.9620, -1.4920, 1.5192

Achromatomaly

27.8647, -0.6637, 2.6098

CSS Examples

Text

The CSS property to change the color of the text to HunterLab 27.7462, 1.2783, 4.3811 is called "color". The color property can be set on classes, ids or directly on the HTML element.

This example shows how text in the color `rgb(88, 76, 71)` looks like.

```
.text, #text, p{  
    color:rgb(88, 76, 71)  
}
```

If you want to add a text shadow in that color use the text-shadow property, you can generate a text shadow directly with our [CSS Text Shadow Generator](#).

Here you see how black text with a 4 pixel rgb(88, 76, 71) colored shadow looks like.

```
.shadow{ text-shadow: 4px 4px 2px rgb(88, 76, 71) }
```

Border

The CSS property to change the border of an element to HunterLab 27.7462, 1.2783, 4.3811 is called "border".

The border property can be set on classes, ids or directly on the HTML element.

This example shows the color as border, it can be applied via the CSS property "border" or "border-color".

```
.border, #border, table{ border:4px solid rgb(88, 76, 71) }
```


If only the border color should be changed use the property border-color.

```
.border{ border-color:rgb(88, 76, 71) }
```

If you want to add a box shadow in that color use:

Here you see how a box with a 4 pixel rgb(88, 76, 71) colored shadow looks like.

```
.boxshadow{ -moz-box-shadow:4px 4px 4px  
4px rgb(88, 76, 71); -webkit-box-  
shadow:4px 4px 4px 4px rgb(88, 76, 71);  
box-shadow:4px 4px 4px 4px rgb(88, 76, 71)  
}
```

Background

The CSS property to change the background color of an element to HunterLab 27.7462, 1.2783, 4.3811 is called "background". The background property can be set on classes, ids or directly on the HTML element.

```
.background, #background, body{  
background: rgb(88, 76, 71) }
```

If only the background color should be changed can be used:

```
.background{ background-color: rgb(88, 76,  
71) }
```

This example shows the color as background, it is applied via the CSS property "background".

To optimize and compress your CSS code, you can use our [online CSS compressor and optimizer](#) based on csstidy. If you want to create a linear or radial gradient as background or border, check our [CSS Gradient Generator](#).

Hey! You found this booklet interesting? Support Converting Colors with the new Membership Option!

The pro membership hides all ads, plus gives you double the colors in the color bucket, and more awesome pro features!

[Learn more, Memberships starting at \\$2.50/m!](#)

**Follow me
on Twitter!**

@ConvertingColor