

Converting Colors

HunterLab(27.6894, 1.0585,
7.0111)

Have a look what the booklet for
HunterLab(27.6894, 1.0585, 7.0111)
contains.

HunterLab(27.7514, 0.9499, 7.0699)	3
<i>Conversions</i>	4
<i>Details</i>	6
<i>Harmonies</i>	12
<i>Previews</i>	24
<i>Color Blindness Simulation</i>	28
<i>CSS Examples</i>	31

Color

**HunterLab(27.7514, 0.9499,
7.0699)**

Conversions

Conversions Part 1

Format	Color
Hex	5A4C3F
RGB	90, 76, 63
RGB Percent	35%, 30%, 25%
CMY	0.6471, 0.7020, 0.7529
CMYK	0.00, 0.16, 0.30, 0.65
HSL	29°, 18%, 30%
HSV	29°, 30%, 35%
XYZ	7.6981, 7.7014, 5.7834
YIQ	78.7040, 12.5170, -1.0750

Conversions

Conversions Part 2

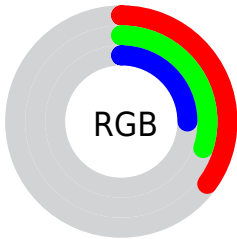
Format	Color
RYB	90, 88, 63
Decimal	5917759
CIELab	33.35, 3.60, 9.91
CIELCh	33, 10.545, 70.037
Yxy	7.7018, 0.3634, 0.3636
Android (android.graphics.Color)	4284107839 (0xFF5A4C3F)
YUV	78.7040, -7.7421, 9.9066
Hunter-Lab	27.7514, 0.9499, 7.0699

Details

The HunterLab color $[27.7514, 0.9499, 7.0699]$ is a dark color, and the websafe version is hex 666666 . A complement of this color would be $[26.6505, -2.7733, -5.1461]$, and the grayscale version is $[27.8796, -1.4876, 1.5148]$.

A 20% lighter version of the original color is $[46.3440, 0.5040, 9.3258]$, and $[12.7383, 1.3978, 4.5716]$ is the 20% darker color. If you saturate the color by 10%, you get $[26.4374, 2.0571, 8.4995]$, and if you desaturate by 10%, it is $[29.1157, -0.0429, 5.4553]$.

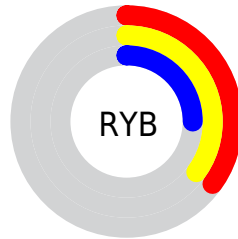
Distribution



 Red (35%)

 Green (30%)

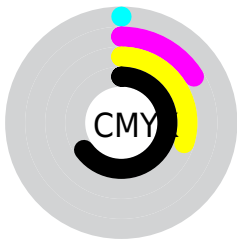
 Blue (25%)



 Red (35%)

 Yellow (35%)

 Blue (25%)

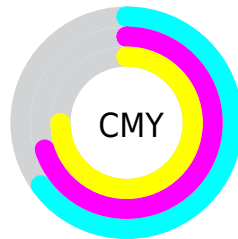



 Cyan (0%)

 Magenta (16%)

 Yellow (30%)

 Black (65%)



 Cyan (65%)

 Magenta (70%)

 Yellow (75%)

Brightness & Saturation Gradients

These gradients show how the HunterLab color 27.7514, 0.9499, 7.0699 changes by changing the brightness by 10 percent. The first figure shows a shift by +10% for each color and the second figure -10%.

Similar to the brightness gradients but the following saturation gradients show a change of the HunterLab color 27.7514, 0.9499, 7.0699 by changing the saturation by 10% instead.

■ 27.7514, 0.9499,
7.0699

■ 27.7514, 0.9499,
7.0699

■ 131.6714, -2.9917,
17.2592

■ 19.7603, 1.1249,
5.8892

■ 46.2295, 0.3989,
9.3397

■ 12.7295, 1.2167,
4.6409

■ 56.5803, 0.0412,
10.4571

■ 6.0934, 2.2492,
4.2654

■ 67.6057, -0.3642,
11.5735

0.0000, NaN, NaN

0.0000, NaN, NaN

■ 79.2666, -0.8134,
12.6934

0.0000, NaN, NaN

■ 91.5302, -1.3031,
13.8200

0.0000, NaN, NaN

0.0000, NaN, NaN

■ 104.3681, -1.8308,

14.9555

0.0000, NaN, NaN

117.7558, -2.3943,
16.1015

■ 27.7514, 0.9499,
7.0699

■ 27.7514, 0.9499,
7.0699

■ 26.4374, 2.0571,
8.4995

■ 29.1157, -0.0429,
5.4553

■ 25.1761, 3.2874,
9.7242

■ 30.5246, -0.9255,
3.6722

■ 23.9724, 4.6440,
10.7248

■ 31.9754, -1.7062,
1.7371

■ 22.8311, 6.1279,
11.4829

■ 33.4649, -2.3925,
-0.3352

■ 21.7572, 7.7358,
11.9826

■ 34.9903, -2.9918,
-2.5320

■ 20.7553, 9.4571,
12.2165

■ 36.5491, -3.5109,
-4.8415

■ 19.8148, 11.2018,
12.4058

■ 38.1390, -3.9564,
-7.2538

■ 19.8147, 11.2019,
12.4059

■ 39.7581, -4.3343,
-9.7599

■ 41.4045, -4.6501,
-12.3519

Harmonies

Analogous

The Analogous color harmony consists of three colors that are next to each other on the color wheel.



27.7520, 4.0847, 5.4629



27.7514, 0.9499, 7.0699



27.7520, -2.6921, 7.3017

Triad

The Triadic color harmony groups three colors that are evenly spaced from another and form a triangle on the color wheel.



27.7520, 0.9489, 7.0703



27.7520, -8.0460, 0.3244



27.7520, 3.1672, -4.0882

Complementary

The Complementary color scheme is a pair of colors which are on the opposite of each other on the color wheel.



27.7514, 0.9499, 7.0699



26.6505, -2.7733, -5.1461

Split Complementary

Split-complementary colors differ from the complementary color scheme. The scheme consists of three colors, the original color and two neighbors of the complement color.



27.7520, -0.2513, -5.8812



27.7514, 0.9499, 7.0699



27.7520, -6.6423, -3.1249

Square

The Square scheme is like the rectangle color scheme, but the four colors are evenly spaced on the color wheel.



27.7520, 0.9489, 7.0703



27.7520, -7.7617, 3.6898



27.7520, -3.8326, -5.5075



27.7520, 5.4104, -0.8610

Rectangle

The Rectangle color scheme consists of four colors that form a rectangle on the color wheel.



27.7514, 0.9499, 7.0699



27.7520, -4.9010, 6.6804



27.7520, -3.8326, -5.5075



27.7520, 2.1104, -4.8964

Sweetspot

The Sweet Spot groups the original color and five complimentary colors.



27.7520, 0.9489, 7.0703



40.5080, -1.3015, 4.6823



25.0405, 8.5573, -1.2209



19.8251, -0.5877, 2.4195



70.1359, -3.7423, 3.8106



20.7927, -1.1094, 1.1297

Same Dimension

The Same Dimension uses a secret algorithm to generate beautiful new colors.



27.7520, 0.9489, 7.0703



35.4537, 2.2895, 10.7329



31.1351, -4.6410, 10.1488



15.8323, -0.5262, 1.7839



24.1264, 14.3855, 15.1184



54.8729, 37.3937, 34.4670

Inverse Universe

The Inverse Universe completely reimagines the original color for something new.



26.6505, -2.7733, -5.1461



33.6647, -3.7306, -9.1247



23.3465, 2.9016, -10.1282



15.6608, -1.1093, -0.1158



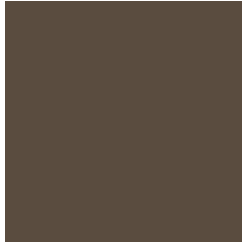
20.0733, 2.6737, -30.8617



45.0295, 9.9328, -77.7250

Previews

White Background



This preview shows how the HunterLab color 27.7514, 0.9499, 7.0699 looks on a white background.

Color Contrast Check

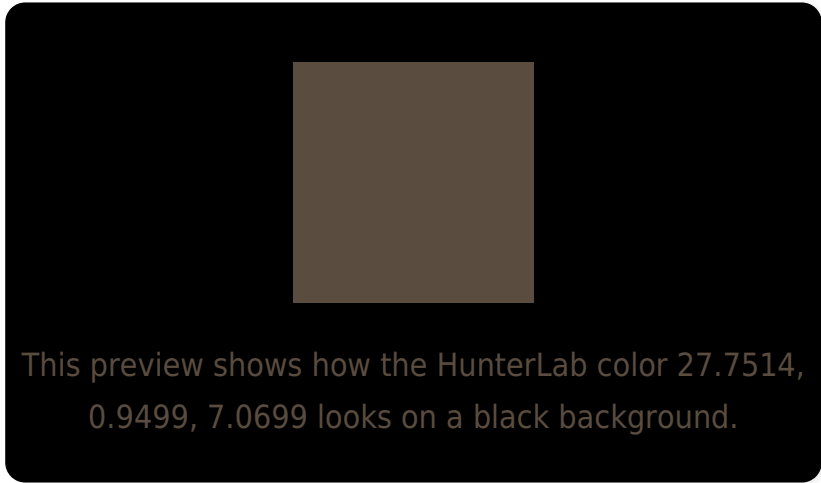
Large Text (above 18pt) WCAG AA ✓ Pass

Any Text WCAG AA ✓ Pass

Large Text (above 18pt) WCAG AAA ✓ Pass

Any Text WCAG AAA ✓ Pass

Black Background



Color Contrast Check

Large Text (above 18pt) WCAG AA × Fail

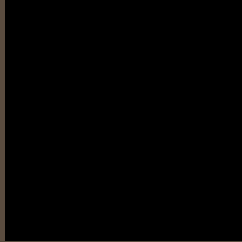
Any Text WCAG AA × Fail

Large Text (above 18pt) WCAG AAA × Fail

Any Text WCAG AAA × Fail

If you want to check with other color combinations, try the [Color Contrast Checker](#).

HunterLab 27.7514, 0.9499, 7.0699 Background



This preview shows how black text looks on a background with the HunterLab color 27.7514, 0.9499, 7.0699.

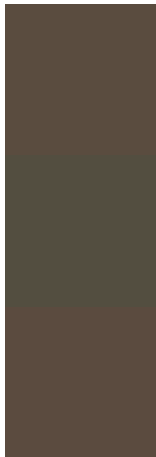


This preview shows how white text looks on a background with the HunterLab color 27.7514, 0.9499,

Color Blindness Simulation

Color vision deficiency is a very complex topic, and I could not describe the different causes any better than Wikipedia does, so if you want to learn more, you should check out their [article about color blindness](#).

Dichromacy



Original Color

27.7514, 0.9499, 7.0699

Protanopia

27.6730, -1.8752, 6.6269

Deuteranopia

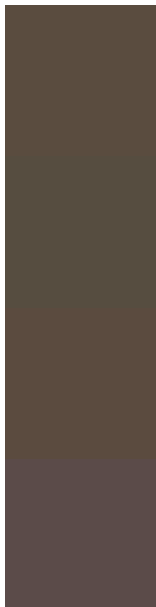
27.5956, 1.6934, 6.9302



Tritanopia

27.8162, 4.4152, 1.4505

Trichromacy



Original Color

27.7514, 0.9499, 7.0699

Protanomaly

27.6701, -0.5753, 6.6468

Deuteranomaly

27.5956, 1.6934, 6.9302

Tritanomaly

27.8161, 2.8712, 3.7548

Monochromacy



Original Color

27.7514, 0.9499, 7.0699

Achromatopsia

27.9620, -1.4920, 1.5192

Achromatomaly

27.8726, -0.7827, 3.7530

CSS Examples

Text

The CSS property to change the color of the text to HunterLab 27.7514, 0.9499, 7.0699 is called "color". The color property can be set on classes, ids or directly on the HTML element.

This example shows how text in the color `rgb(90, 76, 63)` looks like.

```
.text, #text, p{  
    color:rgb(90, 76, 63)  
}
```

If you want to add a text shadow in that color use the text-shadow property, you can generate a text shadow directly with our [CSS Text Shadow Generator](#).

Here you see how black text with a 4 pixel rgb(90, 76, 63) colored shadow looks like.

```
.shadow{ text-shadow: 4px 4px 2px rgb(90, 76, 63) }
```

Border

The CSS property to change the border of an element to HunterLab 27.7514, 0.9499, 7.0699 is called "border".

The border property can be set on classes, ids or directly on the HTML element.

This example shows the color as border, it can be applied via the CSS property "border" or "border-color".

```
.border, #border, table{ border:4px solid rgb(90, 76, 63) }
```


If only the border color should be changed use the property `border-color`.

```
.border{ border-color:rgb(90, 76, 63) }
```

If you want to add a box shadow in that color use:

Here you see how a box with a 4 pixel `rgb(90, 76, 63)` colored shadow looks like.

```
.boxshadow{ -moz-box-shadow:4px 4px 4px  
4px rgb(90, 76, 63); -webkit-box-  
shadow:4px 4px 4px 4px rgb(90, 76, 63);  
box-shadow:4px 4px 4px 4px rgb(90, 76, 63)  
}
```

Background

The CSS property to change the background color of an element to HunterLab 27.7514, 0.9499, 7.0699 is called "background". The background property can be set on classes, ids or directly on the HTML element.

```
.background, #background, body{  
background: rgb(90, 76, 63) }
```

If only the background color should be changed can be used:

```
.background{ background-color: rgb(90, 76,  
63) }
```

This example shows the color as background, it is applied via the CSS property "background".

To optimize and compress your CSS code, you can use our [online CSS compressor and optimizer](#) based on csstidy. If you want to create a linear or radial gradient as background or border, check our [CSS Gradient Generator](#).

Hey! You found this booklet interesting? Support Converting Colors with the new Membership Option!

The pro membership hides all ads, plus gives you double the colors in the color bucket, and more awesome pro features!

[Learn more, Memberships starting at \\$2.50/m!](#)

**Follow me
on Twitter!**

@ConvertingColor