

Converting Colors

HunterLab(27.7955, 7.2319,
0.6730)

Have a look what the booklet for
HunterLab(27.7955, 7.2319, 0.6730)
contains.

HunterLab(27.8751, 7.1367, 0.7437)	3
<i>Conversions</i>	4
<i>Details</i>	6
<i>Harmonies</i>	12
<i>Previews</i>	24
<i>Color Blindness Simulation</i>	28
<i>CSS Examples</i>	31

Color

**HunterLab(27.8751, 7.1367,
0.7437)**

Conversions

Conversions Part 1

Format	Color
Hex	614851
RGB	97, 72, 81
RGB Percent	38%, 28%, 32%
CMY	0.6196, 0.7176, 0.6824
CMYK	0.00, 0.26, 0.16, 0.62
HSL	338°, 15%, 33%
HSV	338°, 26%, 38%
XYZ	8.7323, 7.7702, 8.8242
YIQ	80.5010, 12.0110, 8.0990

Conversions

Conversions Part 2

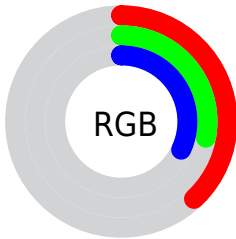
Format	Color
R_{YB}	97, 72, 81
Decimal	6375505
CIE _{Lab}	33.50, 12.25, -1.21
CIE _{LCh}	34, 12.312, 354.383
Yxy	7.7706, 0.3448, 0.3068
Android (android.graphics.Color)	4284565585 (0xFF614851)
YUV	80.5010, 0.2460, 14.4696
Hunter-Lab	27.8751, 7.1367, 0.7437

Details

The HunterLab color $[27.8751, 7.1367, 0.7437]$ is a dark color, and the websafe version is hex 666666 . A complement of this color would be $[32.6066, -9.3856, 3.1389]$, and the grayscale version is $[28.5009, -1.5207, 1.5485]$.

A 20% lighter version of the original color is $[46.4568, 7.3780, 1.8026]$, and $[12.8148, 6.3320, -0.0907]$ is the 20% darker color. If you saturate the color by 10%, you get $[25.5437, 10.7262, 0.5634]$, and if you desaturate by 10%, it is $[30.3690, 3.5950, 1.0849]$.

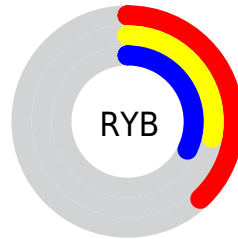
Distribution



 Red (38%)

 Green (28%)

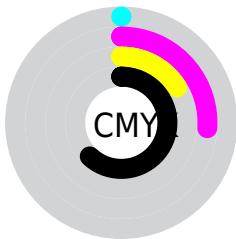
 Blue (32%)



 Red (38%)

 Yellow (28%)

 Blue (32%)

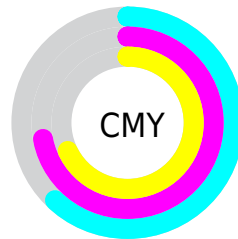


 Cyan (0%)

 Magenta (26%)

 Yellow (16%)

 Black (62%)



 Cyan (62%)

 Magenta (72%)

 Yellow (68%)

Brightness & Saturation Gradients

These gradients show how the HunterLab color 27.8751, 7.1367, 0.7437 changes by changing the brightness by 10 percent. The first figure shows a shift by +10% for each color and the second figure -10%.

Similar to the brightness gradients but the following saturation gradients show a change of the HunterLab color 27.8751, 7.1367, 0.7437 by changing the saturation by 10% instead.

■ 27.8751, 7.1367,
0.7437

■ 27.8751, 7.1367,
0.7437

■ 131.8792, 6.9148,
5.8924

■ 19.8708, 6.7534,
0.3885

■ 46.3761, 7.5777,
1.6120

■ 12.8249, 6.2305,
0.0955

■ 56.7371, 7.6689,
2.1138

■ 6.2251, 8.2443,
-0.4636

■ 67.7720, 7.6877,
2.6560

0.0000, NaN, NaN

0.0000, NaN, NaN

■ 79.4420, 7.6418,
3.2358

0.0000, NaN, NaN

■ 91.7142, 7.5370,
3.8512

0.0000, NaN, NaN

104.5604, 7.3784,

0.0000, NaN, NaN

4.5001

0.0000, NaN, NaN

117.9559, 7.1698,
5.1810

■ 27.8751, 7.1367,
0.7437

■ 27.8751, 7.1367,
0.7437

■ 25.5437, 10.7262,
0.5634

■ 30.3690, 3.5950,
1.0849

■ 23.4009, 14.3213,
0.5763

■ 33.0005, 0.1240,
1.5564

■ 21.4803, 17.8368,
0.8193

■ 35.7514, -3.2719,
2.1349

■ 19.8181, 21.1361,
1.3246

■ 38.6063, -6.5958,
2.8016

■ 18.4507, 24.0272,
2.1082

■ 41.5529, -9.8541,
3.5416

■ 17.4074, 26.2856,
3.1542

■ 44.5810, -13.0551,
4.3432

■ 16.6357, 27.9368,
4.3419

■ 47.6824, -16.2070,
5.1970

■ 16.3164, 28.6830,
4.8020

■ 50.8501, -19.3177,
6.0958

■ 54.0783, -22.3943,
7.0337

Harmonies

Analogous

The Analogous color harmony consists of three colors that are next to each other on the color wheel.



27.8757, 5.4837, -3.4099



27.8751, 7.1367, 0.7437



27.8757, 6.3667, 4.5449

Triad

The Triadic color harmony groups three colors that are evenly spaced from another and form a triangle on the color wheel.



27.8757, 7.1357, 0.7442



27.8757, -4.7889, 7.7196



27.8757, -6.0983, -5.5853

Complementary

The Complementary color scheme is a pair of colors which are on the opposite of each other on the color wheel.



27.8751, 7.1367, 0.7437



32.6066, -9.3856, 3.1389

Split Complementary

Split-complementary colors differ from the complementary color scheme. The scheme consists of three colors, the original color and two neighbors of the complement color.



27.8757, -8.5607, -1.8931



27.8751, 7.1367, 0.7437



27.8757, -7.8370, 5.6825

Square

The Square scheme is like the rectangle color scheme, but the four colors are evenly spaced on the color wheel.



27.8757, 7.1357, 0.7442



27.8757, -0.6830, 8.2086



27.8757, -9.1777, 2.2689



27.8757, -2.2857, -7.3994

Rectangle

The Rectangle color scheme consists of four colors that form a rectangle on the color wheel.



27.8751, 7.1367, 0.7437



27.8757, 4.6069, 6.4336



27.8757, -9.1777, 2.2689



27.8757, -7.1020, -4.4982

Sweetspot

The Sweet Spot groups the original color and five complimentary colors.



27.8757, 7.1357, 0.7442



42.3419, 1.2720, 1.8716



27.5041, 6.9288, -7.3101



20.8994, 0.8930, 0.8955



72.2857, -3.8570, 3.9274



22.5557, -1.2035, 1.2255

Same Dimension

The Same Dimension uses a secret algorithm to generate beautiful new colors.



27.8757, 7.1357, 0.7442



34.5968, 12.2194, 0.8017



28.4379, 4.4561, 4.8181



16.1357, 0.5989, 0.7010



19.0098, 33.3747, 5.9288



43.7598, 76.4857, 16.2945

Inverse Universe

The Inverse Universe completely reimagines the original color for something new.



27.8757, 7.1357, 0.7442



34.5968, 12.2194, 0.8017



31.9175, -6.6213, -1.4568



16.1357, 0.5989, 0.7010



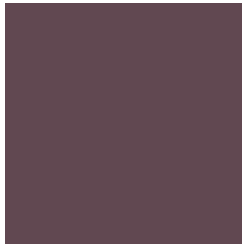
19.0098, 33.3747, 5.9288



43.7598, 76.4857, 16.2945

Previews

White Background



This preview shows how the HunterLab color 27.8751, 7.1367, 0.7437 looks on a white background.

Color Contrast Check

Large Text (above 18pt) WCAG AA ✓ Pass

Any Text WCAG AA ✓ Pass

Large Text (above 18pt) WCAG AAA ✓ Pass

Any Text WCAG AAA ✓ Pass

Black Background



This preview shows how the HunterLab color 27.8751, 7.1367, 0.7437 looks on a black background.

Color Contrast Check

Large Text (above 18pt) WCAG AA × Fail

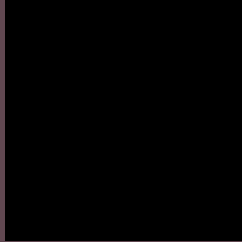
Any Text WCAG AA × Fail

Large Text (above 18pt) WCAG AAA × Fail

Any Text WCAG AAA × Fail

If you want to check with other color combinations, try the [Color Contrast Checker](#).

HunterLab 27.8751, 7.1367, 0.7437 Background



This preview shows how black text looks on a background with the HunterLab color 27.8751, 7.1367, 0.7437.



This preview shows how white text looks on a background with the HunterLab color 27.8751, 7.1367,

0.7437.

Color Blindness Simulation

Color vision deficiency is a very complex topic, and I could not describe the different causes any better than Wikipedia does, so if you want to learn more, you should check out their [article about color blindness](#).

Dichromacy



Original Color

27.8751, 7.1367, 0.7437

Protanopia

27.8692, -0.1671, -1.1140

Deuteranopia

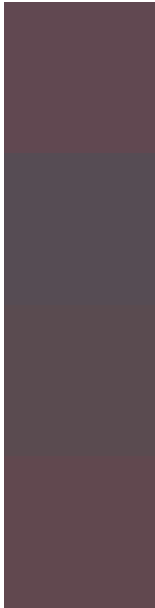
28.0453, 1.4540, 1.2622



Tritanopia

27.7960, 6.7274, 1.8712

Trichromacy



Original Color

27.8751, 7.1367, 0.7437

Protanomaly

27.9059, 2.4800, -0.5815

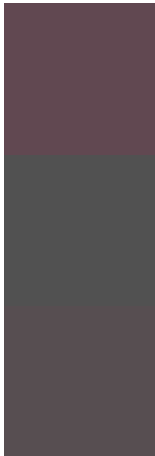
Deuteranomaly

27.9016, 3.5067, 1.1270

Tritanomaly

27.8220, 6.8621, 1.5003

Monochromacy



Original Color

27.8751, 7.1367, 0.7437

Achromatopsia

28.6850, -1.5306, 1.5585

Achromatomaly

28.4062, 1.4402, 1.2808

CSS Examples

Text

The CSS property to change the color of the text to HunterLab 27.8751, 7.1367, 0.7437 is called "color". The color property can be set on classes, ids or directly on the HTML element.

This example shows how text in the color `rgb(97, 72, 81)` looks like.

```
.text, #text, p{  
    color:rgb(97, 72, 81)  
}
```

If you want to add a text shadow in that color use the text-shadow property, you can generate a text shadow directly with our [CSS Text Shadow Generator](#).

Here you see how black text with a 4 pixel rgb(97, 72, 81) colored shadow looks like.

```
.shadow{ text-shadow: 4px 4px 2px rgb(97, 72, 81) }
```

Border

The CSS property to change the border of an element to HunterLab 27.8751, 7.1367, 0.7437 is called "border". The border property can be set on classes, ids or directly on the HTML element.

This example shows the color as border, it can be applied via the CSS property "border" or "border-color".

```
.border, #border, table{ border:4px solid rgb(97, 72, 81) }
```


If only the border color should be changed use the property border-color.

```
.border{ border-color:rgb(97, 72, 81) }
```

If you want to add a box shadow in that color use:

Here you see how a box with a 4 pixel rgb(97, 72, 81) colored shadow looks like.

```
.boxshadow{ -moz-box-shadow:4px 4px 4px  
4px rgb(97, 72, 81); -webkit-box-  
shadow:4px 4px 4px 4px rgb(97, 72, 81);  
box-shadow:4px 4px 4px 4px rgb(97, 72, 81)  
}
```

Background

The CSS property to change the background color of an element to HunterLab 27.8751, 7.1367, 0.7437 is called "background". The background property can be set on classes, ids or directly on the HTML element.

```
.background, #background, body{  
background: rgb(97, 72, 81) }
```

If only the background color should be changed can be used:

```
.background{ background-color: rgb(97, 72,  
81) }
```

This example shows the color as background, it is applied via the CSS property "background".

To optimize and compress your CSS code, you can use our [online CSS compressor and optimizer](#) based on csstidy. If you want to create a linear or radial gradient as background or border, check our [CSS Gradient Generator](#).

Hey! You found this booklet interesting? Support Converting Colors with the new Membership Option!

The pro membership hides all ads, plus gives you double the colors in the color bucket, and more awesome pro features!

[Learn more, Memberships starting at \\$2.50/m!](#)

**Follow me
on Twitter!**

@ConvertingColor