

Converting Colors

HunterLab(27.9090, 7.7903,
4.4705)

Have a look what the booklet for
HunterLab(27.9090, 7.7903, 4.4705)
contains.

HunterLab(27.9269, 8.0293, 4.3329)	3
<i>Conversions</i>	4
<i>Details</i>	6
<i>Harmonies</i>	12
<i>Previews</i>	24
<i>Color Blindness Simulation</i>	28
<i>CSS Examples</i>	31

Color

**HunterLab(27.9269, 8.0293,
4.3329)**

Conversions

Conversions Part 1

Format	Color
Hex	664748
RGB	102, 71, 72
RGB Percent	40%, 28%, 28%
CMY	0.6000, 0.7216, 0.7176
CMYK	0.00, 0.30, 0.29, 0.60
HSL	358°, 18%, 34%
HSV	358°, 30%, 40%
XYZ	8.9024, 7.7991, 7.1670
YIQ	80.3830, 18.1550, 6.8830

Conversions

Conversions Part 2

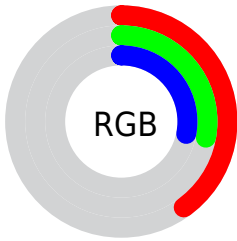
Format	Color
R_{YB}	102, 71, 72
Decimal	6702920
CIE Lab	33.56, 13.44, 4.70
CIE LCh	34, 14.241, 19.263
Yxy	7.7995, 0.3730, 0.3268
Android (android.graphics.Color)	4284893000 (0xFF664748)
YUV	80.3830, -4.1328, 18.9581
Hunter-Lab	27.9269, 8.0293, 4.3329

Details

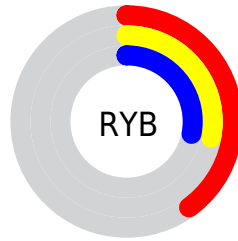
The HunterLab color $[27.9269, 8.0293, 4.3329]$ is a dark color, and the websafe version is hex 663333 . A complement of this color would be $[34.3250, -9.6303, -0.2852]$, and the grayscale version is $[28.4720, -1.5192, 1.5469]$.

A 20% lighter version of the original color is $[46.5393, 8.4331, 6.1872]$, and $[12.8718, 7.0817, 2.7013]$ is the 20% darker color. If you saturate the color by 10%, you get $[25.4764, 11.5437, 5.2511]$, and if you desaturate by 10%, it is $[30.5730, 4.6203, 3.4885]$.

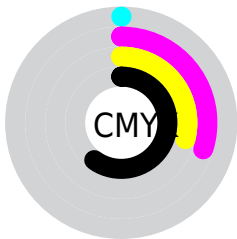
Distribution



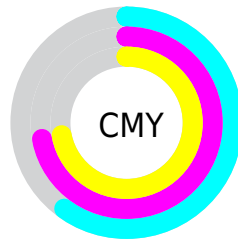
- Red (40%)
- Green (28%)
- Blue (28%)



- Red (40%)
- Yellow (28%)
- Blue (28%)



- Cyan (0%)
- Magenta (30%)
- Yellow (29%)
- Black (60%)



- Cyan (60%)
- Magenta (72%)
- Yellow (72%)

Brightness & Saturation Gradients

These gradients show how the HunterLab color 27.9269, 8.0293, 4.3329 changes by changing the brightness by 10 percent. The first figure shows a shift by +10% for each color and the second figure -10%.

Similar to the brightness gradients but the following saturation gradients show a change of the HunterLab color 27.9269, 8.0293, 4.3329 by changing the saturation by 10% instead.

■ 27.9269, 8.0293,
4.3329

■ 27.9269, 8.0293,
4.3329

■ 131.9662, 8.3000,
12.0766

■ 19.9171, 7.5747,
3.5622

■ 46.4375, 8.5993,
5.9145

■ 12.8650, 6.9757,
2.7917

■ 56.8028, 8.7497,
6.7321

■ 6.2794, 8.9935,
3.4431

■ 67.8417, 8.8248,
7.5699

0.0000, NaN, NaN

0.0000, NaN, NaN

■ 79.5155, 8.8325,
8.4287

0.0000, NaN, NaN

■ 91.7913, 8.7792,
9.3087

0.0000, NaN, NaN

104.6409, 8.6700,

0.0000, NaN, NaN

118.0397, 8.5090,
11.1328

■ 27.9269, 8.0293,
4.3329

■ 27.9269, 8.0293,
4.3329

■ 25.4764, 11.5437,
5.2511

■ 30.5730, 4.6203,
3.4885

■ 23.2554, 15.1179,
6.2340

■ 33.3830, 1.3366,
2.7150

■ 21.3063, 18.6506,
7.2587

■ 36.3336, -1.8242,
2.0068

■ 19.6741, 21.9729,
8.2785

■ 39.4057, -4.8720,
1.3565

■ 18.4001, 24.8497,
9.2213

■ 42.5838, -7.8203,
0.7563

■ 17.5101, 27.0259,
9.9996

■ 45.8555, -10.6828,
0.1992

■ 16.8285, 28.8620,
10.5427

■ 49.2107, -13.4726,
-0.3211

■ 52.6412, -16.2015,
-0.8100

■ 56.1399, -18.8797,
-1.2722

Harmonies

Analogous

The Analogous color harmony consists of three colors that are next to each other on the color wheel.



27.9276, 8.4411, -0.2118



27.9269, 8.0293, 4.3329



27.9276, 4.9649, 7.5239

Triad

The Triadic color harmony groups three colors that are evenly spaced from another and form a triangle on the color wheel.



27.9276, 8.0282, 4.3334



27.9276, -8.3149, 6.7860



27.9276, -3.2351, -8.8651

Complementary

The Complementary color scheme is a pair of colors which are on the opposite of each other on the color wheel.



27.9269, 8.0293, 4.3329



34.3250, -9.6303, -0.2852

Split Complementary

Split-complementary colors differ from the complementary color scheme. The scheme consists of three colors, the original color and two neighbors of the complement color.



27.9276, -7.4102, -6.2085



27.9269, 8.0293, 4.3329



27.9276, -10.2049, 3.1479

Square

The Square scheme is like the rectangle color scheme, but the four colors are evenly spaced on the color wheel.



27.9276, 8.0282, 4.3334



27.9276, -4.5494, 8.7609



27.9276, -9.8856, -1.6200



27.9276, 1.7036, -8.3979

Rectangle

The Rectangle color scheme consists of four colors that form a rectangle on the color wheel.



27.9269, 8.0293, 4.3329



27.9276, 1.9433, 8.7045



27.9276, -9.8856, -1.6200



27.9276, -4.7682, -8.2918

Sweetspot

The Sweet Spot groups the original color and five complimentary colors.



27.9276, 8.0282, 4.3334



44.6424, 1.2885, 3.4852



28.6896, 12.1030, -8.0877



21.4840, 0.8469, 1.7434



73.3645, -3.9145, 3.9860



23.4461, -1.2510, 1.2739

Same Dimension

The Same Dimension uses a secret algorithm to generate beautiful new colors.



27.9276, 8.0282, 4.3334



34.7966, 13.7116, 6.5356



31.3858, 1.3924, 8.1021



16.8753, 0.4318, 1.3014



19.0683, 32.6975, 11.9924



43.5185, 74.5660, 27.8162

Inverse Universe

The Inverse Universe completely reimagines the original color for something new.



27.9276, 8.0282, 4.3334



34.7966, 13.7116, 6.5356



30.3353, -3.3729, -5.9353



16.8753, 0.4318, 1.3014



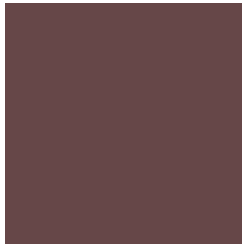
19.0683, 32.6975, 11.9924



43.5185, 74.5660, 27.8162

Previews

White Background



This preview shows how the HunterLab color 27.9269, 8.0293, 4.3329 looks on a white background.

Color Contrast Check

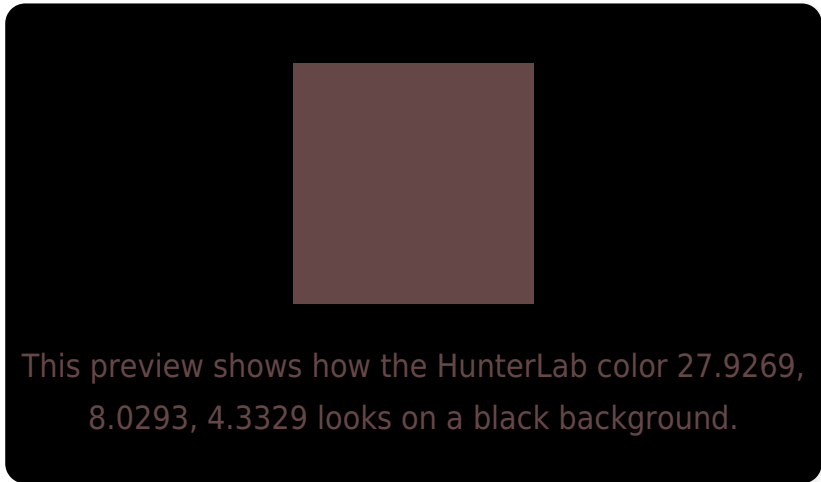
Large Text (above 18pt) WCAG AA ✓ Pass

Any Text WCAG AA ✓ Pass

Large Text (above 18pt) WCAG AAA ✓ Pass

Any Text WCAG AAA ✓ Pass

Black Background



Color Contrast Check

Large Text (above 18pt) WCAG AA × Fail

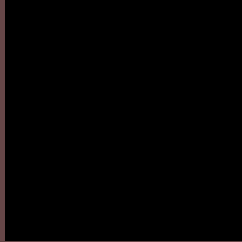
Any Text WCAG AA × Fail

Large Text (above 18pt) WCAG AAA × Fail

Any Text WCAG AAA × Fail

If you want to check with other color combinations, try the [Color Contrast Checker](#).

HunterLab 27.9269, 8.0293, 4.3329 Background



This preview shows how black text looks on a background with the HunterLab color 27.9269, 8.0293, 4.3329.

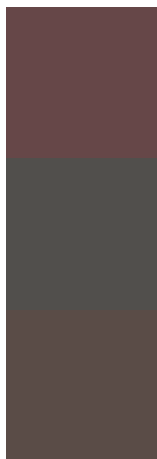


This preview shows how white text looks on a background with the HunterLab color 27.9269, 8.0293,

Color Blindness Simulation

Color vision deficiency is a very complex topic, and I could not describe the different causes any better than Wikipedia does, so if you want to learn more, you should check out their [article about color blindness](#).

Dichromacy



Original Color

27.9269, 8.0293, 4.3329

Protanopia

28.0412, -1.3692, 2.7978

Deuteranopia

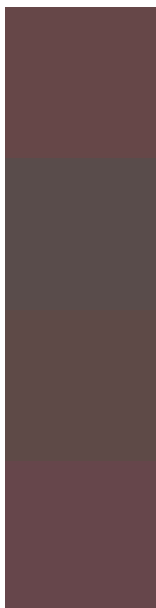
27.9240, 1.8770, 4.5822



Tritanopia

27.7973, 8.9821, 2.7019

Trichromacy



Original Color

27.9269, 8.0293, 4.3329

Protanomaly

27.9298, 2.0866, 3.1159

Deuteranomaly

27.8068, 3.9905, 4.4936

Tritanomaly

27.7725, 8.8554, 3.0574

Monochromacy



Original Color

27.9269, 8.0293, 4.3329

Achromatopsia

28.3231, -1.5113, 1.5388

Achromatomaly

28.1394, 1.6170, 2.5740

CSS Examples

Text

The CSS property to change the color of the text to HunterLab 27.9269, 8.0293, 4.3329 is called "color". The color property can be set on classes, ids or directly on the HTML element.

This example shows how text in the color `rgb(102, 71, 72)` looks like.

```
.text, #text, p{  
    color:rgb(102, 71, 72)  
}
```

If you want to add a text shadow in that color use the text-shadow property, you can generate a text shadow directly with our [CSS Text Shadow Generator](#).

Here you see how black text with a 4 pixel rgb(102, 71, 72) colored shadow looks like.

```
.shadow{ text-shadow: 4px 4px 2px rgb(102, 71, 72) }
```

Border

The CSS property to change the border of an element to HunterLab 27.9269, 8.0293, 4.3329 is called "border". The border property can be set on classes, ids or directly on the HTML element.

This example shows the color as border, it can be applied via the CSS property "border" or "border-color".

```
.border, #border, table{ border:4px solid rgb(102, 71, 72) }
```


If only the border color should be changed use the property border-color.

```
.border{ border-color:rgb(102, 71, 72) }
```

If you want to add a box shadow in that color use:

Here you see how a box with a 4 pixel rgb(102, 71, 72) colored shadow looks like.

```
.boxshadow{ -moz-box-shadow:4px 4px 4px  
4px rgb(102, 71, 72); -webkit-box-  
shadow:4px 4px 4px 4px rgb(102, 71, 72);  
box-shadow:4px 4px 4px 4px rgb(102, 71,  
72) }
```

Background

The CSS property to change the background color of an element to HunterLab 27.9269, 8.0293, 4.3329 is called "background". The background property can be set on classes, ids or directly on the HTML element.

```
.background, #background, body{  
background: rgb(102, 71, 72) }
```

If only the background color should be changed can be used:

```
.background{ background-color: rgb(102, 71,  
72) }
```

This example shows the color as background, it is applied via the CSS property "background".

To optimize and compress your CSS code, you can use our [online CSS compressor and optimizer](#) based on csstidy. If you want to create a linear or radial gradient as background or border, check our [CSS Gradient Generator](#).

Hey! You found this booklet interesting? Support Converting Colors with the new Membership Option!

The pro membership hides all ads, plus gives you double the colors in the color bucket, and more awesome pro features!

[Learn more, Memberships starting at \\$2.50/m!](#)

**Follow me
on Twitter!**

@ConvertingColor