

Converting Colors

HunterLab(28.3446, -0.2877,
3.5842)

Have a look what the booklet for
HunterLab(28.3446, -0.2877, 3.5842)
contains.

HunterLab(28.3395, -0.3873, 3.5293)	3
<i>Conversions</i>	4
<i>Details</i>	6
<i>Harmonies</i>	12
<i>Previews</i>	24
<i>Color Blindness Simulation</i>	28
<i>CSS Examples</i>	31

Color

**HunterLab(28.3395, -0.3873,
3.5293)**

Conversions

Conversions Part 1

Format	Color
Hex	554F4B
RGB	85, 79, 75
RGB Percent	33%, 31%, 29%
CMY	0.6667, 0.6902, 0.7059
CMYK	0.00, 0.07, 0.12, 0.67
HSL	24°, 6%, 31%
HSV	24°, 12%, 33%
XYZ	7.8123, 8.0313, 7.7951
YIQ	80.3380, 4.8600, 0.0280

Conversions

Conversions Part 2

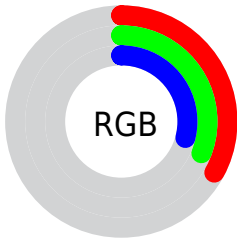
Format	Color
R_{YB}	85, 82, 75
Decimal	5590859
CIE Lab	34.05, 1.67, 3.24
CIE LCh	34, 3.649, 62.759
Yxy	8.0316, 0.3305, 0.3398
Android (android.graphics.Color)	4283780939 (0xFF554F4B)
YUV	80.3380, -2.6316, 4.0886
Hunter-Lab	28.3395, -0.3873, 3.5293

Details

The HunterLab color **28.3395, -0.3873, 3.5293** is a dark color, and the websafe version is hex **666666**. A complement of this color would be **28.3487, -2.4879, -0.5501**, and the grayscale version is **28.4539, -1.5182, 1.5460**.

A 20% lighter version of the original color is **46.9515, -1.0010, 4.8339**, and **13.2367, 0.0765, 2.3512** is the 20% darker color. If you saturate the color by 10%, you get **26.8613, 0.7514, 5.0166**, and if you desaturate by 10%, it is **29.8663, -1.4331, 1.9304**.

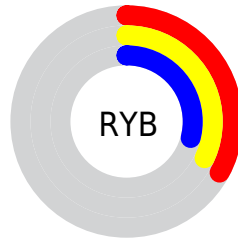
Distribution



 Red (33%)

 Green (31%)

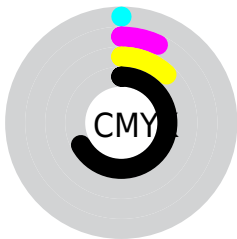
 Blue (29%)



 Red (33%)

 Yellow (32%)

 Blue (29%)

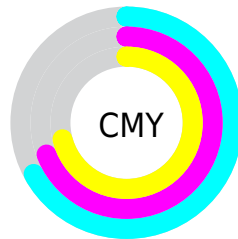


 Cyan (0%)


 Magenta (7%)

 Yellow (12%)

 Black (67%)



 Cyan (67%)

 Magenta (69%)

 Yellow (71%)

Brightness & Saturation Gradients

These gradients show how the HunterLab color 28.3395, -0.3873, 3.5293 changes by changing the brightness by 10 percent. The first figure shows a shift by +10% for each color and the second figure -10%.

Similar to the brightness gradients but the following saturation gradients show a change of the HunterLab color 28.3395, -0.3873, 3.5293 by changing the saturation by 10% instead.

■ 28.3395, -0.3873,
3.5293

■ 28.3395, -0.3873,
3.5293

■ 132.6574, -5.2118,
10.6269

■ 20.2859, -0.0747,
2.8649

■ 46.9259, -1.1777,
4.9308

■ 13.1841, 0.1725,
2.2187

■ 57.3250, -1.6424,
5.6694

■ 6.6949, 0.7297,
2.3733

■ 68.3957, -2.1484,
6.4337

0.0000, NaN, NaN

0.0000, NaN, NaN

■ 80.0995, -2.6929,
7.2233

0.0000, NaN, NaN

■ 92.4039, -3.2733,
8.0380

0.0000, NaN, NaN

105.2808, -3.8877,

0.0000, NaN, NaN

8.8771

0.0000, NaN, NaN

118.7058, -4.5344,
9.7402

■ 28.3395, -0.3873,
3.5293

■ 28.3395, -0.3873,
3.5293

■ 26.8613, 0.7514,
5.0166

■ 29.8663, -1.4331,
1.9304

■ 25.4345, 1.9929,
6.3759

■ 31.4357, -2.3912,
0.2314

■ 24.0647, 3.3431,
7.5907

■ 33.0449, -3.2701,
-1.5561

■ 22.7578, 4.8069,
8.6419

■ 34.6908, -4.0767,
-3.4228

■ 21.5203, 6.3863,
9.5087

■ 36.3705, -4.8178,
-5.3606

■ 20.3591, 8.0785,
10.1699

■ 38.0817, -5.4994,
-7.3625

■ 19.2815, 9.8738,
10.6062

■ 39.8222, -6.1270,
-9.4229

■ 18.2936, 11.7452,
10.8265

■ 41.5900, -6.7056,
-11.5365

■ 17.5391, 13.2601,
11.0396

■ 43.3836, -7.2396,
-13.6991

Harmonies

Analogous

The Analogous color harmony consists of three colors that are next to each other on the color wheel.



28.3401, 0.5677, 2.7701



28.3395, -0.3873, 3.5293



28.3401, -1.6310, 3.7646

Triad

The Triadic color harmony groups three colors that are evenly spaced from another and form a triangle on the color wheel.



28.3401, -0.3881, 3.5297



28.3401, -3.9100, 1.4307



28.3401, -0.1812, -0.4796

Complementary

The Complementary color scheme is a pair of colors which are on the opposite of each other on the color wheel.



28.3395, -0.3873, 3.5293



28.3487, -2.4879, -0.5501

Split Complementary

Split-complementary colors differ from the complementary color scheme. The scheme consists of three colors, the original color and two neighbors of the complement color.



28.3401, -1.3961, -0.8752



28.3395, -0.3873, 3.5293



28.3401, -3.5366, 0.2577

Square

The Square scheme is like the rectangle color scheme, but the four colors are evenly spaced on the color wheel.



28.3401, -0.3881, 3.5297



28.3401, -3.6507, 2.5847



28.3401, -2.6220, -0.5997



28.3401, 0.6886, 0.4594

Rectangle

The Rectangle color scheme consists of four colors that form a rectangle on the color wheel.



28.3395, -0.3873, 3.5293



28.3401, -2.4515, 3.6007



28.3401, -2.6220, -0.5997



28.3401, -0.5635, -0.6824

Sweetspot

The Sweet Spot groups the original color and five complimentary colors.



28.3401, -0.3881, 3.5297



38.5193, -1.5588, 3.0272



27.4912, 2.1961, 0.1892



19.4442, -0.7533, 1.5891



69.0652, -3.6851, 3.7524



19.9203, -1.0629, 1.0823

Same Dimension

The Same Dimension uses a secret algorithm to generate beautiful new colors.



28.3401, -0.3881, 3.5297



36.4767, -0.1181, 5.1474



29.6311, -2.5370, 4.8944



14.9546, -0.3673, 1.5933



22.0214, 17.6689, 13.8788



50.5748, 46.0394, 31.9699

Inverse Universe

The Inverse Universe completely reimagines the original color for something new.



28.3487, -2.4879, -0.5501



36.4902, -3.4789, -1.3828



27.0569, -0.3384, -2.1666



14.9579, -1.1859, 0.0030



21.8124, -1.2957, -24.4666



49.9426, -0.1148, -62.1761

Previews

White Background



This preview shows how the HunterLab color 28.3395, -0.3873, 3.5293 looks on a white background.

Color Contrast Check

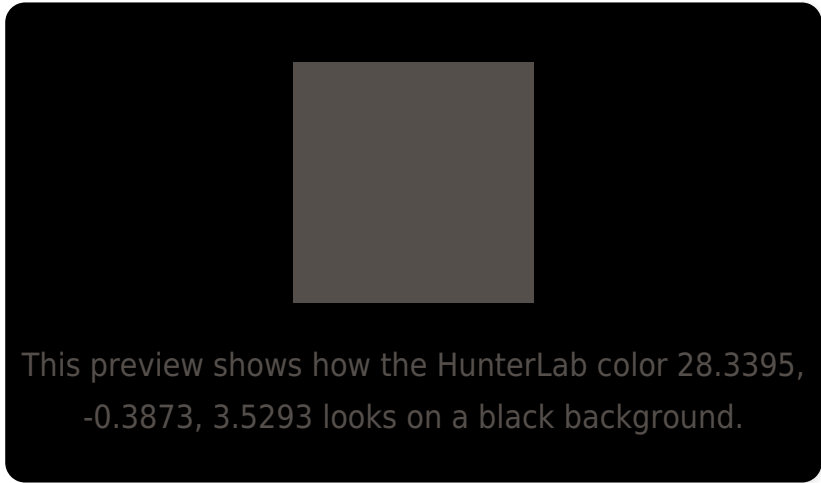
Large Text (above 18pt) WCAG AA ✓ Pass

Any Text WCAG AA ✓ Pass

Large Text (above 18pt) WCAG AAA ✓ Pass

Any Text WCAG AAA ✓ Pass

Black Background



Color Contrast Check

Large Text (above 18pt) WCAG AA × Fail

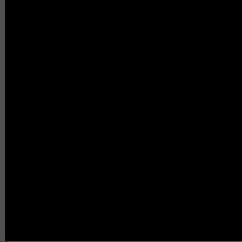
Any Text WCAG AA × Fail

Large Text (above 18pt) WCAG AAA × Fail

Any Text WCAG AAA × Fail

If you want to check with other color combinations, try the [Color Contrast Checker](#).

HunterLab 28.3395, -0.3873, 3.5293 Background



This preview shows how black text looks on a background with the HunterLab color 28.3395, -0.3873, 3.5293.



This preview shows how white text looks on a background with the HunterLab color 28.3395, -0.3873,

3.5293.

Color Blindness Simulation

Color vision deficiency is a very complex topic, and I could not describe the different causes any better than Wikipedia does, so if you want to learn more, you should check out their [article about color blindness](#).

Dichromacy



Original Color

28.3395, -0.3873, 3.5293

Protanopia

28.4329, -1.3803, 3.6153

Deuteranopia

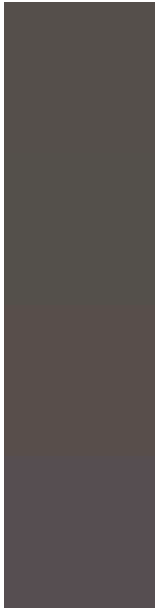
28.2656, 1.9423, 3.4882



Tritanopia

28.4030, 1.5916, 0.0211

Trichromacy



Original Color

28.3395, -0.3873, 3.5293

Protanomaly

28.5134, -1.1012, 3.7090

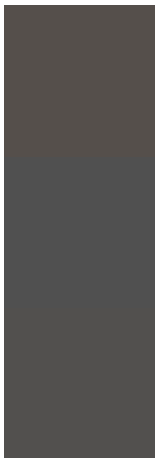
Deuteranomaly

28.3399, 0.9126, 3.5525

Tritanomaly

28.3219, 1.1555, 1.1755

Monochromacy



Original Color

28.3395, -0.3873, 3.5293

Achromatopsia

28.3231, -1.5113, 1.5388

Achromatomaly

28.4275, -1.2513, 2.4621

CSS Examples

Text

The CSS property to change the color of the text to HunterLab 28.3395, -0.3873, 3.5293 is called "color". The color property can be set on classes, ids or directly on the HTML element.

This example shows how text in the color `rgb(85, 79, 75)` looks like.

```
.text, #text, p{  
    color:rgb(85, 79, 75)  
}
```

If you want to add a text shadow in that color use the text-shadow property, you can generate a text shadow directly with our [CSS Text Shadow Generator](#).

Here you see how black text with a 4 pixel rgb(85, 79, 75) colored shadow looks like.

```
.shadow{ text-shadow: 4px 4px 2px rgb(85, 79, 75) }
```

Border

The CSS property to change the border of an element to HunterLab 28.3395, -0.3873, 3.5293 is called "border". The border property can be set on classes, ids or directly on the HTML element.

This example shows the color as border, it can be applied via the CSS property "border" or "border-color".

```
.border, #border, table{ border:4px solid rgb(85, 79, 75) }
```


If only the border color should be changed use the property `border-color`.

```
.border{ border-color:rgb(85, 79, 75) }
```

If you want to add a box shadow in that color use:

Here you see how a box with a 4 pixel `rgb(85, 79, 75)` colored shadow looks like.

```
.boxshadow{ -moz-box-shadow:4px 4px 4px  
4px rgb(85, 79, 75); -webkit-box-  
shadow:4px 4px 4px 4px rgb(85, 79, 75);  
box-shadow:4px 4px 4px 4px rgb(85, 79, 75)  
}
```

Background

The CSS property to change the background color of an element to HunterLab 28.3395, -0.3873, 3.5293 is called "background". The background property can be set on classes, ids or directly on the HTML element.

```
.background, #background, body{  
background: rgb(85, 79, 75) }
```

If only the background color should be changed can be used:

```
.background{ background-color: rgb(85, 79,  
75) }
```

This example shows the color as background, it is applied via the CSS property "background".

To optimize and compress your CSS code, you can use our [online CSS compressor and optimizer](#) based on csstidy. If you want to create a linear or radial gradient as background or border, check our [CSS Gradient Generator](#).

Hey! You found this booklet interesting? Support Converting Colors with the new Membership Option!

The pro membership hides all ads, plus gives you double the colors in the color bucket, and more awesome pro features!

[Learn more, Memberships starting at \\$2.50/m!](#)

**Follow me
on Twitter!**

@ConvertingColor