

# Converting Colors

HunterLab(28.3999, 7.5195,  
4.5135)

Have a look what the booklet for  
HunterLab(28.3999, 7.5195, 4.5135)  
contains.

<b>HunterLab(28.5126, 7.5649, 4.5944)</b> .....	3
<b><i>Conversions</i></b> .....	4
<b><i>Details</i></b> .....	6
<b><i>Harmonies</i></b> .....	12
<b><i>Previews</i></b> .....	24
<b><i>Color Blindness Simulation</i></b> .....	28
<b><i>CSS Examples</i></b> .....	31

# Color

**HunterLab(28.5126, 7.5649,  
4.5944)**

# Conversions

## Conversions Part 1

<b>Format</b>	<b>Color</b>
Hex	674949
RGB	103, 73, 73
RGB Percent	40%, 29%, 29%
CMY	0.5961, 0.7137, 0.7137
CMYK	0.00, 0.29, 0.29, 0.60
HSL	0°, 17%, 35%
HSV	0°, 29%, 40%
XYZ	9.1787, 8.1297, 7.3888
YIQ	81.9700, 17.8800, 6.3600

# Conversions

## Conversions Part 2

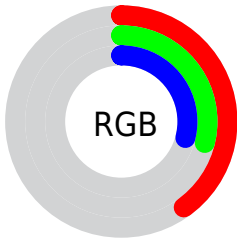
<b>Format</b>	<b>Color</b>
<b>R<sub>YB</sub></b>	103, 73, 73
Decimal	6768969
CIE <sub>Lab</sub>	34.25, 12.79, 5.06
CIE <sub>LCh</sub>	34, 13.758, 21.599
Yxy	8.1301, 0.3716, 0.3292
Android (android.graphics.Color)	4284959049 (0xFF674949)
YUV	81.9700, -4.4222, 18.4433
Hunter-Lab	28.5126, 7.5649, 4.5944

# Details

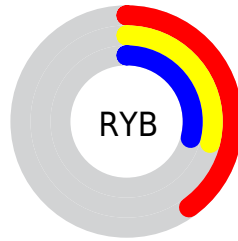
The HunterLab color **28.5126, 7.5649, 4.5944** is a dark color, and the websafe version is hex **663333**. A complement of this color would be **34.7791, -9.3038, -0.6076**, and the grayscale version is **29.0482, -1.5499, 1.5782**.

A 20% lighter version of the original color is **47.1891, 7.9315, 6.4887**, and **13.3592, 6.6749, 2.8974** is the 20% darker color. If you saturate the color by 10%, you get **26.0026, 11.0846, 5.5938**, and if you desaturate by 10%, it is **31.2179, 4.1650, 3.6509**.

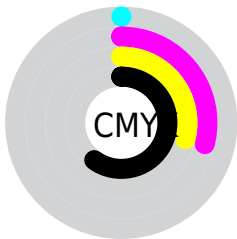
# Distribution



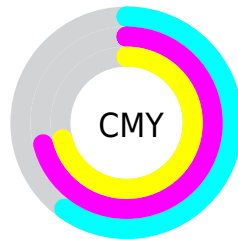
- Red (40%)
- Green (29%)
- Blue (29%)



- Red (40%)
- Yellow (29%)
- Blue (29%)



- Cyan (0%)
- Magenta (29%)
- Yellow (29%)
- Black (60%)



- Cyan (60%)
- Magenta (71%)
- Yellow (71%)

# Brightness & Saturation Gradients

These gradients show how the HunterLab color 28.5126, 7.5649, 4.5944 changes by changing the brightness by 10 percent. The first figure shows a shift by +10% for each color and the second figure -10%.

Similar to the brightness gradients but the following saturation gradients show a change of the HunterLab color 28.5126, 7.5649, 4.5944 by changing the saturation by 10% instead.



■ 28.5126, 7.5649,  
4.5944

■ 28.5126, 7.5649,  
4.5944

■ 132.9468, 7.5224,  
12.5170

■ 20.4409, 7.1582,  
3.7958

■ 47.1307, 8.0504,  
6.2246

■ 13.3184, 6.6122,  
2.9941

■ 57.5439, 8.1628,  
7.0639

■ 6.8612, 7.7576,  
3.4331

■ 68.6279, 8.2021,  
7.9221

0.0000, NaN, NaN

0.0000, NaN, NaN

■ 80.3442, 8.1760,  
8.8002

0.0000, NaN, NaN

■ 92.6605, 8.0905,  
9.6986

0.0000, NaN, NaN

105.5488, 7.9504,

0.0000, NaN, NaN

118.9847, 7.7599,  
11.5570

■ 28.5126, 7.5649,  
4.5944

■ 28.5126, 7.5649,  
4.5944

■ 26.0026, 11.0846,  
5.5938

■ 31.2179, 4.1650,  
3.6509

■ 23.7220, 14.6846,  
6.6358

■ 34.0870, 0.9004,  
2.7636

■ 21.7137, 18.2708,  
7.6927

■ 37.0967, -2.2343,  
1.9301

■ 20.0234, 21.6811,  
8.7136

■ 40.2279, -5.2510,  
1.1448

■ 18.6942, 24.6822,  
9.6233

■ 43.4652, -8.1645,  
0.4018

■ 17.7548, 27.0106,  
10.3355

■ 46.7964, -10.9894,  
-0.3048

■ 17.0448, 28.9042,  
10.9190

■ 50.2113, -13.7396,  
-0.9803

■ 16.9815, 29.0790,  
10.9730

■ 53.7017, -16.4270,  
-1.6293

■ 57.2608, -19.0622,  
-2.2559

# Harmonies

## Analogous

The Analogous color harmony consists of three colors that are next to each other on the color wheel.



28.5133, 8.1810, 0.2410



28.5126, 7.5649, 4.5944



28.5133, 4.4317, 7.6042

# Triad

The Triadic color harmony groups three colors that are evenly spaced from another and form a triangle on the color wheel.



28.5133, 7.5638, 4.5949



28.5133, -8.3932, 6.4792



28.5133, -2.8572, -8.5565

# Complementary

The Complementary color scheme is a pair of colors which are on the opposite of each other on the color wheel.



28.5126, 7.5649, 4.5944



34.7791, -9.3038, -0.6076

# Split Complementary

Split-complementary colors differ from the complementary color scheme. The scheme consists of three colors, the original color and two neighbors of the complement color.



28.5133, -7.0257, -6.2104



28.5126, 7.5649, 4.5944



28.5133, -10.0809, 2.8037

# Square

The Square scheme is like the rectangle color scheme, but the four colors are evenly spaced on the color wheel.



28.5133, 7.5638, 4.5949



28.5133, -4.8374, 8.5605



28.5133, -9.5973, -1.8681



28.5133, 1.9502, -7.8638



# Rectangle

The Rectangle color scheme consists of four colors that form a rectangle on the color wheel.



28.5126, 7.5649, 4.5944



28.5133, 1.4455, 8.6817



28.5133, -9.5973, -1.8681



28.5133, -4.3747, -8.0849

# Sweetspot

The Sweet Spot groups the original color and five complimentary colors.



28.5133, 7.5638, 4.5949



45.5586, 1.2642, 3.7141



29.3735, 11.9439, -7.5923



22.2863, 0.8616, 1.8984



74.4461, -3.9723, 4.0448



24.3420, -1.2988, 1.3225



# Same Dimension

The Same Dimension uses a secret algorithm to generate beautiful new colors.



28.5133, 7.5638, 4.5949



35.8056, 13.3578, 7.0638



32.1623, 0.8025, 8.2121



16.8715, 0.4110, 1.3562



19.0475, 32.6171, 12.3080



43.4993, 74.4917, 28.1082



# Inverse Universe

The Inverse Universe completely reimagines the original color for something new.



34.7791, -9.3038, -0.6076



46.0323, -14.3317, -1.4807



30.6191, -2.9487, -6.0318



17.8470, -2.1918, 0.5541



36.6535, -19.4303, -3.8692

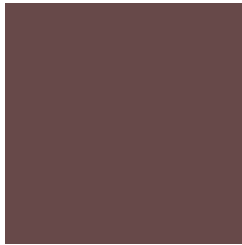


83.7072, -44.3736, -8.8369



# Previews

## White Background



This preview shows how the HunterLab color 28.5126, 7.5649, 4.5944 looks on a white background.

## Color Contrast Check

Large Text (above 18pt) WCAG AA ✓ Pass

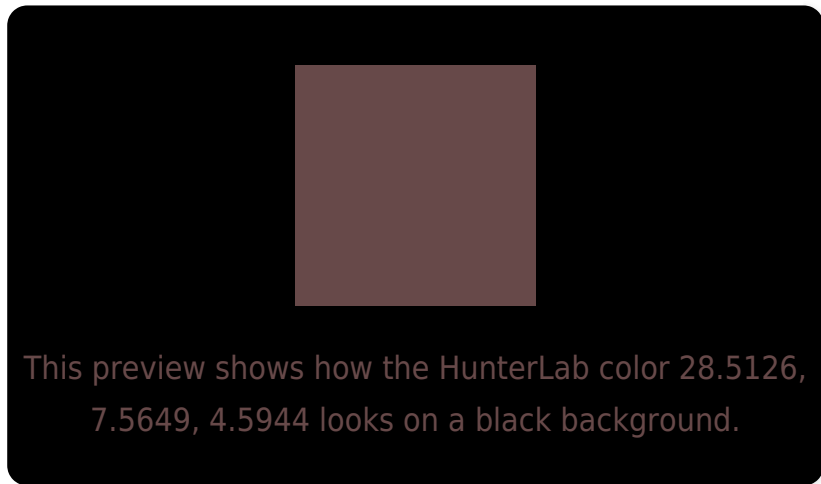
Any Text WCAG AA ✓ Pass

Large Text (above 18pt) WCAG AAA ✓ Pass

Any Text WCAG AAA ✓ Pass



# Black Background



## Color Contrast Check

Large Text (above 18pt) WCAG AA × Fail

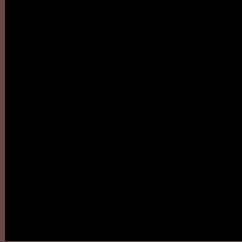
Any Text WCAG AA × Fail

Large Text (above 18pt) WCAG AAA × Fail

Any Text WCAG AAA × Fail

If you want to check with other color combinations, try the [Color Contrast Checker](#).

# HunterLab 28.5126, 7.5649, 4.5944 Background



This preview shows how black text looks on a background with the HunterLab color 28.5126, 7.5649, 4.5944.



This preview shows how white text looks on a background with the HunterLab color 28.5126, 7.5649,

4.5944.

# Color Blindness Simulation

Color vision deficiency is a very complex topic, and I could not describe the different causes any better than Wikipedia does, so if you want to learn more, you should check out their [article about color blindness](#).

## Dichromacy



### Original Color

28.5126, 7.5649, 4.5944

### Protanopia

28.4818, -1.1130, 2.9150

### Deuteranopia

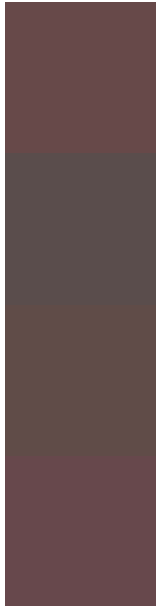
28.6216, 1.7236, 4.9665



## Tritanopia

28.4048, 8.6462, 2.6095

# Trichromacy



## Original Color

28.5126, 7.5649, 4.5944

## Protanomaly

28.2900, 2.0730, 3.1385

## Deuteranomaly

28.5019, 3.8437, 4.8764

## Tritanomaly

28.3551, 8.3911, 3.3221

# Monochromacy



## Original Color

28.5126, 7.5649, 4.5944

## Achromatopsia

29.0476, -1.5499, 1.5782

## Achromatomaly

28.8620, 1.5889, 2.6168

# CSS Examples

## Text

The CSS property to change the color of the text to HunterLab 28.5126, 7.5649, 4.5944 is called "color". The color property can be set on classes, ids or directly on the HTML element.

This example shows how text in the color `rgb(103, 73, 73)` looks like.

```
.text, #text, p{  
    color:rgb(103, 73, 73)  
}
```

If you want to add a text shadow in that color use the text-shadow property, you can generate a text shadow directly with our [CSS Text Shadow Generator](#).

Here you see how black text with a 4 pixel rgb(103, 73, 73) colored shadow looks like.

```
.shadow{ text-shadow: 4px 4px 2px rgb(103, 73, 73) }
```

## Border

The CSS property to change the border of an element to HunterLab 28.5126, 7.5649, 4.5944 is called "border".

The border property can be set on classes, ids or directly on the HTML element.

This example shows the color as border, it can be applied via the CSS property "border" or "border-color".

```
.border, #border, table{ border:4px solid rgb(103, 73, 73) }
```



If only the border color should be changed use the property border-color.

```
.border{ border-color:rgb(103, 73, 73) }
```

If you want to add a box shadow in that color use:

Here you see how a box with a 4 pixel rgb(103, 73, 73) colored shadow looks like.

```
.boxshadow{ -moz-box-shadow:4px 4px 4px  
4px rgb(103, 73, 73); -webkit-box-  
shadow:4px 4px 4px 4px rgb(103, 73, 73);  
box-shadow:4px 4px 4px 4px rgb(103, 73,  
73) }
```

# Background

The CSS property to change the background color of an element to HunterLab 28.5126, 7.5649, 4.5944 is called "background". The background property can be set on classes, ids or directly on the HTML element.

```
.background, #background, body{  
background: rgb(103, 73, 73) }
```

If only the background color should be changed can be used:

```
.background{ background-color: rgb(103, 73,  
73) }
```

This example shows the color as background, it is applied via the CSS property "background".

To optimize and compress your CSS code, you can use our [online CSS compressor and optimizer](#) based on csstidy. If you want to create a linear or radial gradient as background or border, check our [CSS Gradient Generator](#).

Hey! You found this booklet interesting? Support Converting Colors with the new Membership Option!

The pro membership hides all ads, plus gives you double the colors in the color bucket, and more awesome pro features!

**[Learn more, Memberships starting at \\$2.50/m!](#)**

**Follow me  
on Twitter!**

@ConvertingColor