

Converting Colors

HunterLab(28.4608, 9.3027,
3.4265)

Have a look what the booklet for
HunterLab(28.4608, 9.3027, 3.4265)
contains.

HunterLab(28.5653, 9.0469, 3.5684)	3
<i>Conversions</i>	4
<i>Details</i>	6
<i>Harmonies</i>	12
<i>Previews</i>	24
<i>Color Blindness Simulation</i>	28
<i>CSS Examples</i>	31

Color

**HunterLab(28.5653, 9.0469,
3.5684)**

Conversions

Conversions Part 1

Format	Color
Hex	69484C
RGB	105, 72, 76
RGB Percent	41%, 28%, 30%
CMY	0.5882, 0.7176, 0.7020
CMYK	0.00, 0.31, 0.28, 0.59
HSL	353°, 19%, 35%
HSV	353°, 31%, 41%
XYZ	9.4475, 8.1598, 7.9145
YIQ	82.3230, 18.3840, 8.2400

Conversions

Conversions Part 2

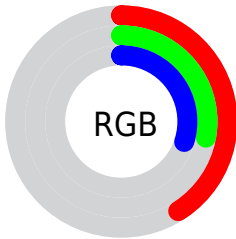
Format	Color
R_{YB}	105, 72, 76
Decimal	6899788
CIE Lab	34.31, 14.74, 3.28
CIE LCh	34, 15.104, 12.544
Yxy	8.1601, 0.3702, 0.3197
Android (android.graphics.Color)	4285089868 (0xFF69484C)
YUV	82.3230, -3.1172, 19.8877
Hunter-Lab	28.5653, 9.0469, 3.5684

Details

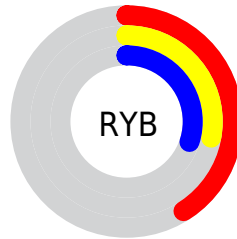
The HunterLab color **28.5653, 9.0469, 3.5684** is a dark color, and the websafe version is hex **663333**. A complement of this color would be **35.2429, -10.6551, 0.8163**, and the grayscale version is **29.1716, -1.5565, 1.5850**.

A 20% lighter version of the original color is **47.2478, 9.6635, 4.9359**, and **13.4337, 7.8933, 2.3849** is the 20% darker color. If you saturate the color by 10%, you get **26.0714, 12.7607, 4.2936**, and if you desaturate by 10%, it is **31.2625, 5.4128, 2.9689**.

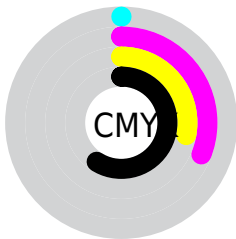
Distribution



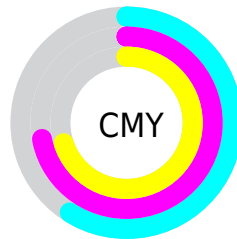
- Red (41%)
- Green (28%)
- Blue (30%)



- Red (41%)
- Yellow (28%)
- Blue (30%)



- Cyan (0%)
- Magenta (31%)
- Yellow (28%)
- Black (59%)



- Cyan (59%)
- Magenta (72%)
- Yellow (70%)

Brightness & Saturation Gradients

These gradients show how the HunterLab color 28.5653, 9.0469, 3.5684 changes by changing the brightness by 10 percent. The first figure shows a shift by +10% for each color and the second figure -10%.

Similar to the brightness gradients but the following saturation gradients show a change of the HunterLab color 28.5653, 9.0469, 3.5684 by changing the saturation by 10% instead.

■ 28.5653, 9.0469,
3.5684

■ 28.5653, 9.0469,
3.5684

■ 133.0349, 9.8065,
10.6880

■ 20.4880, 8.5253,
2.9009

■ 47.1930, 9.7418,
4.9757

■ 13.3593, 7.8570,
2.2513

■ 57.6105, 9.9505,
5.7170

■ 6.9109, 8.9270,
2.3438

■ 68.6985, 10.0814,
6.4838

0.0000, NaN, NaN

0.0000, NaN, NaN

■ 80.4186, 10.1427,
7.2758

0.0000, NaN, NaN

■ 92.7385, 10.1410,
8.0927

0.0000, NaN, NaN

105.6303, 10.0816,

0.0000, NaN, NaN

119.0695, 9.9688,
9.7993

■ 28.5653, 9.0469,
3.5684

■ 28.5653, 9.0469,
3.5684

■ 26.0714, 12.7607,
4.2936

■ 31.2625, 5.4128,
2.9689

■ 23.8160, 16.4966,
5.1492

■ 34.1303, 1.8870,
2.4810

■ 21.8426, 20.1376,
6.1281

■ 37.1445, -1.5273,
2.0906

■ 20.1966, 23.4979,
7.1989

■ 40.2850, -4.8366,
1.7839

■ 18.9188, 26.3303,
8.2984

■ 43.5356, -8.0518,
1.5483

■ 18.0319, 28.3875,
9.3336

■ 46.8835, -11.1854,
1.3731

■ 17.4115, 29.9805,
9.9890

■ 50.3181, -14.2496,
1.2494

■ 53.8307, -17.2556,
1.1697

■ 57.4141, -20.2131,
1.1277

Harmonies

Analogous

The Analogous color harmony consists of three colors that are next to each other on the color wheel.



28.5660, 8.7899, -1.4881



28.5653, 9.0469, 3.5684



28.5660, 6.3240, 7.3314

Triad

The Triadic color harmony groups three colors that are evenly spaced from another and form a triangle on the color wheel.



28.5660, 9.0457, 3.5689



28.5660, -8.0551, 7.7803



28.5660, -4.5002, -9.2448

Complementary

The Complementary color scheme is a pair of colors which are on the opposite of each other on the color wheel.



28.5653, 9.0469, 3.5684



35.2429, -10.6551, 0.8163

Split Complementary

Split-complementary colors differ from the complementary color scheme. The scheme consists of three colors, the original color and two neighbors of the complement color.



28.5660, -8.6099, -5.7551



28.5653, 9.0469, 3.5684



28.5660, -10.5579, 4.2961

Square

The Square scheme is like the rectangle color scheme, but the four colors are evenly spaced on the color wheel.



28.5660, 9.0457, 3.5689



28.5660, -3.6919, 9.4501



28.5660, -10.7533, -0.6173



28.5660, 0.7070, -9.5363

Rectangle

The Rectangle color scheme consists of four colors that form a rectangle on the color wheel.



28.5653, 9.0469, 3.5684



28.5660, 3.2945, 8.8499



28.5660, -10.7533, -0.6173



28.5660, -6.0462, -8.3813

Sweetspot

The Sweet Spot groups the original color and five complimentary colors.



28.5660, 9.0457, 3.5689



46.5297, 1.5226, 3.1963



28.9805, 12.0447, -9.2736



22.3086, 0.9828, 1.5770



74.4461, -3.9723, 4.0448



24.3420, -1.2988, 1.3225

Same Dimension

The Same Dimension uses a secret algorithm to generate beautiful new colors.



28.5660, 9.0457, 3.5689



35.6391, 15.9098, 5.5037



31.3490, 3.0678, 7.7747



17.6697, 0.5286, 1.2051



19.5832, 33.7016, 11.3763



44.1232, 75.7707, 26.8950

Inverse Universe

The Inverse Universe completely reimagines the original color for something new.



28.5660, 9.0457, 3.5689



35.6391, 15.9098, 5.5037



31.9516, -4.9203, -5.1973



17.6697, 0.5286, 1.2051



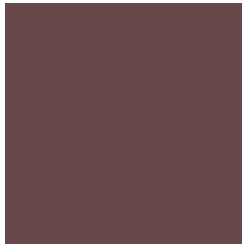
19.5832, 33.7016, 11.3763



44.1232, 75.7707, 26.8950

Previews

White Background



This preview shows how the HunterLab color 28.5653, 9.0469, 3.5684 looks on a white background.

Color Contrast Check

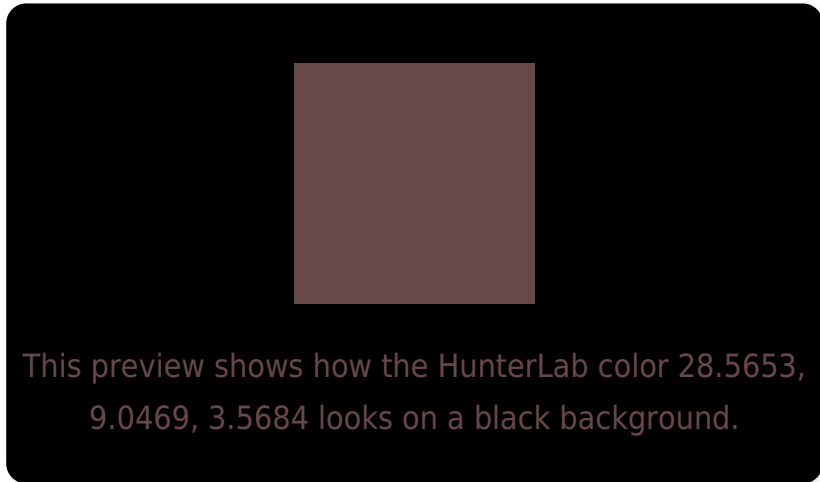
Large Text (above 18pt) WCAG AA ✓ Pass

Any Text WCAG AA ✓ Pass

Large Text (above 18pt) WCAG AAA ✓ Pass

Any Text WCAG AAA ✓ Pass

Black Background



Color Contrast Check

Large Text (above 18pt) WCAG AA × Fail

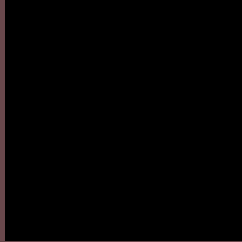
Any Text WCAG AA × Fail

Large Text (above 18pt) WCAG AAA × Fail

Any Text WCAG AAA × Fail

If you want to check with other color combinations, try the [Color Contrast Checker](#).

HunterLab 28.5653, 9.0469, 3.5684 Background



This preview shows how black text looks on a background with the HunterLab color 28.5653, 9.0469, 3.5684.



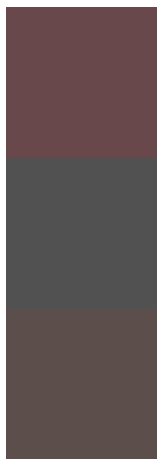
This preview shows how white text looks on a background with the HunterLab color 28.5653, 9.0469,

3.5684.

Color Blindness Simulation

Color vision deficiency is a very complex topic, and I could not describe the different causes any better than Wikipedia does, so if you want to learn more, you should check out their [article about color blindness](#).

Dichromacy



Original Color

28.5653, 9.0469, 3.5684

Protanopia

28.7624, -1.2614, 1.6543

Deuteranopia

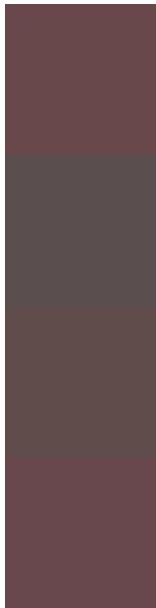
28.6023, 1.7989, 3.8576



Tritanopia

28.5899, 9.1722, 3.2169

Trichromacy



Original Color

28.5653, 9.0469, 3.5684

Protanomaly

28.6128, 2.0319, 2.3387

Deuteranomaly

28.5722, 4.2151, 3.8667

Tritanomaly

28.5899, 9.1722, 3.2169

Monochromacy



Original Color

28.5653, 9.0469, 3.5684

Achromatopsia

29.0476, -1.5499, 1.5782

Achromatomaly

28.6385, 2.1690, 1.9726

CSS Examples

Text

The CSS property to change the color of the text to HunterLab 28.5653, 9.0469, 3.5684 is called "color". The color property can be set on classes, ids or directly on the HTML element.

This example shows how text in the color `rgb(105, 72, 76)` looks like.

```
.text, #text, p{  
    color:rgb(105, 72, 76)  
}
```

If you want to add a text shadow in that color use the text-shadow property, you can generate a text shadow directly with our [CSS Text Shadow Generator](#).

Here you see how black text with a 4 pixel rgb(105, 72, 76) colored shadow looks like.

```
.shadow{ text-shadow: 4px 4px 2px rgb(105, 72, 76) }
```

Border

The CSS property to change the border of an element to HunterLab 28.5653, 9.0469, 3.5684 is called "border".

The border property can be set on classes, ids or directly on the HTML element.

This example shows the color as border, it can be applied via the CSS property "border" or "border-color".

```
.border, #border, table{ border:4px solid rgb(105, 72, 76) }
```


If only the border color should be changed use the property `border-color`.

```
.border{ border-color:rgb(105, 72, 76) }
```

If you want to add a box shadow in that color use:

Here you see how a box with a 4 pixel `rgb(105, 72, 76)` colored shadow looks like.

```
.boxshadow{ -moz-box-shadow:4px 4px 4px  
4px rgb(105, 72, 76); -webkit-box-  
shadow:4px 4px 4px 4px rgb(105, 72, 76);  
box-shadow:4px 4px 4px 4px rgb(105, 72,  
76) }
```

Background

The CSS property to change the background color of an element to HunterLab 28.5653, 9.0469, 3.5684 is called "background". The background property can be set on classes, ids or directly on the HTML element.

```
.background, #background, body{  
background: rgb(105, 72, 76) }
```

If only the background color should be changed can be used:

```
.background{ background-color: rgb(105, 72,  
76) }
```

This example shows the color as background, it is applied via the CSS property "background".

To optimize and compress your CSS code, you can use our [online CSS compressor and optimizer](#) based on csstidy. If you want to create a linear or radial gradient as background or border, check our [CSS Gradient Generator](#).

Hey! You found this booklet interesting? Support Converting Colors with the new Membership Option!

The pro membership hides all ads, plus gives you double the colors in the color bucket, and more awesome pro features!

[Learn more, Memberships starting at \\$2.50/m!](#)

**Follow me
on Twitter!**

@ConvertingColor