

Converting Colors

HunterLab(28.5425, -0.0811,
3.9216)

Have a look what the booklet for
HunterLab(28.5425, -0.0811, 3.9216)
contains.

HunterLab(28.5065, 0.1853, 3.7239)	3
<i>Conversions</i>	4
<i>Details</i>	6
<i>Harmonies</i>	12
<i>Previews</i>	24
<i>Color Blindness Simulation</i>	28
<i>CSS Examples</i>	31

Color

**HunterLab(28.5065, 0.1853,
3.7239)**

Conversions

Conversions Part 1

Format	Color
Hex	574F4B
RGB	87, 79, 75
RGB Percent	34%, 31%, 29%
CMY	0.6588, 0.6902, 0.7059
CMYK	0.00, 0.09, 0.14, 0.66
HSL	20°, 7%, 32%
HSV	20°, 14%, 34%
XYZ	7.9965, 8.1262, 7.8037
YIQ	80.9360, 6.0520, 0.4520

Conversions

Conversions Part 2

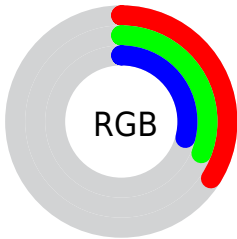
Format	Color
R_{YB}	87, 81, 75
Decimal	5721931
CIE Lab	34.25, 2.52, 3.55
CIE LCh	34, 4.355, 54.666
Yxy	8.1266, 0.3342, 0.3396
Android (android.graphics.Color)	4283912011 (0xFF574F4B)
YUV	80.9360, -2.9264, 5.3181
Hunter-Lab	28.5065, 0.1853, 3.7239

Details

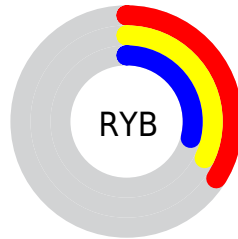
The HunterLab color $[28.5065, 0.1853, 3.7239]$ is a dark color, and the websafe version is hex 666666 . A complement of this color would be $[28.9315, -3.0295, -0.7041]$, and the grayscale version is $[28.6710, -1.5298, 1.5578]$.

A 20% lighter version of the original color is $[47.1295, -0.3887, 5.0453]$, and $[13.3912, 0.6015, 2.5226]$ is the 20% darker color. If you saturate the color by 10%, you get $[26.8608, 1.6290, 5.1002]$, and if you desaturate by 10%, it is $[30.2116, -1.1611, 2.2558]$.

Distribution



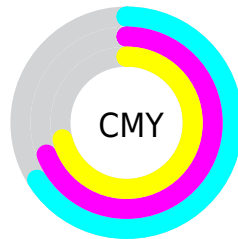
- Red (34%)
- Green (31%)
- Blue (29%)



- Red (34%)
- Yellow (32%)
- Blue (29%)



- Cyan (0%)
- Magenta (9%)
- Yellow (14%)
- Black (66%)



- Cyan (66%)
- Magenta (69%)
- Yellow (71%)

Brightness & Saturation Gradients

These gradients show how the HunterLab color 28.5065, 0.1853, 3.7239 changes by changing the brightness by 10 percent. The first figure shows a shift by +10% for each color and the second figure -10%.

Similar to the brightness gradients but the following saturation gradients show a change of the HunterLab color 28.5065, 0.1853, 3.7239 by changing the saturation by 10% instead.

■ 28.5065, 0.1853,
3.7239

■ 28.5065, 0.1853,
3.7239

■ 132.9366, -4.2694,
10.9636

■ 20.4354, 0.4407,
3.0368

■ 47.1234, -0.5051,
5.1645

■ 13.3136, 0.6235,
2.3644

■ 57.5361, -0.9251,
5.9204

■ 6.8553, 1.2348,
2.5214

■ 68.6196, -1.3890,
6.7009

0.0000, NaN, NaN

0.0000, NaN, NaN

■ 80.3355, -1.8935,
7.5058

0.0000, NaN, NaN

■ 92.6514, -2.4359,
8.3349

0.0000, NaN, NaN

105.5393, -3.0139,

0.0000, NaN, NaN

9.1878

0.0000, NaN, NaN

118.9748, -3.6256,
10.0642

■ 28.5065, 0.1853,
3.7239

■ 28.5065, 0.1853,
3.7239

■ 26.8608, 1.6290,
5.1002

■ 30.2116, -1.1611,
2.2558

■ 25.2791, 3.1803,
6.3683

■ 31.9686, -2.4161,
0.7073

■ 23.7692, 4.8446,
7.5106

■ 33.7734, -3.5890,
-0.9111

■ 22.3395, 6.6248,
8.5060

■ 35.6220, -4.6879,
-2.5907

■ 20.9995, 8.5183,
9.3305

■ 37.5106, -5.7202,
-4.3247

■ 19.7595, 10.5140,
9.9588

■ 39.4362, -6.6927,
-6.1072

■ 18.6304, 12.5890,
10.3668

■ 41.3960, -7.6118,
-7.9334

■ 17.6194, 14.6868,
10.5923

■ 43.3877, -8.4828,
-9.7994

■ 17.0459, 15.9331,
10.7826

■ 45.4092, -9.3106,
-11.7018

Harmonies

Analogous

The Analogous color harmony consists of three colors that are next to each other on the color wheel.



28.5071, 1.1776, 2.6859



28.5065, 0.1853, 3.7239



28.5071, -1.2509, 4.1792

Triad

The Triadic color harmony groups three colors that are evenly spaced from another and form a triangle on the color wheel.



28.5071, 0.1845, 3.7243



28.5071, -4.3698, 1.8085



28.5071, -0.2947, -1.0875

Complementary

The Complementary color scheme is a pair of colors which are on the opposite of each other on the color wheel.



28.5065, 0.1853, 3.7239



28.9315, -3.0295, -0.7041

Split Complementary

Split-complementary colors differ from the complementary color scheme. The scheme consists of three colors, the original color and two neighbors of the complement color.



28.5071, -1.7933, -1.3524



28.5065, 0.1853, 3.7239



28.5071, -4.1259, 0.3690

Square

The Square scheme is like the rectangle color scheme, but the four colors are evenly spaced on the color wheel.



28.5071, 0.1845, 3.7243



28.5071, -3.8640, 3.1107



28.5071, -3.1904, -0.8066



28.5071, 0.8969, -0.1006

Rectangle

The Rectangle color scheme consists of four colors that form a rectangle on the color wheel.



28.5065, 0.1853, 3.7239



28.5071, -2.2575, 4.1083



28.5071, -3.1904, -0.8066



28.5071, -0.7801, -1.2660

Sweetspot

The Sweet Spot groups the original color and five complimentary colors.



28.5071, 0.1845, 3.7243



39.3908, -1.4597, 3.0132



27.7183, 3.0627, -0.3716



19.3991, -0.6776, 1.5385



69.0652, -3.6851, 3.7524



19.9203, -1.0629, 1.0823

Same Dimension

The Same Dimension uses a secret algorithm to generate beautiful new colors.



28.5071, 0.1845, 3.7243



36.4234, 0.9337, 5.5552



30.0522, -2.4066, 5.3428



14.8882, -0.2550, 1.5205



20.9205, 20.5366, 13.2506



48.0380, 52.9360, 30.5275

Inverse Universe

The Inverse Universe completely reimagines the original color for something new.



28.9315, -3.0295, -0.7041



37.1254, -4.3874, -1.7747



27.3712, -0.4501, -2.6737



15.0259, -1.2968, 0.0845



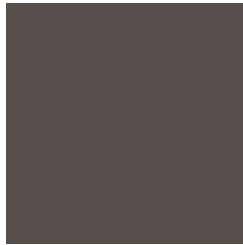
23.7046, -4.3078, -20.3293



54.6575, -7.8421, -51.3882

Previews

White Background



This preview shows how the HunterLab color 28.5065, 0.1853, 3.7239 looks on a white background.

Color Contrast Check

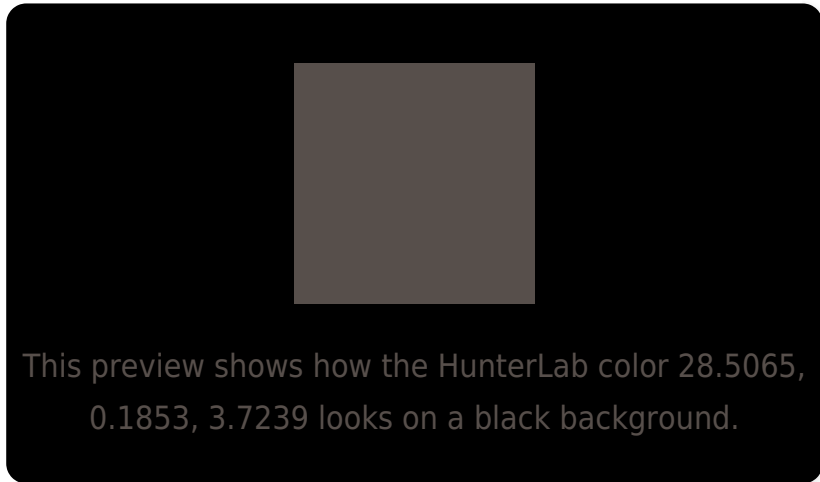
Large Text (above 18pt) WCAG AA ✓ Pass

Any Text WCAG AA ✓ Pass

Large Text (above 18pt) WCAG AAA ✓ Pass

Any Text WCAG AAA ✓ Pass

Black Background



Color Contrast Check

Large Text (above 18pt) WCAG AA × Fail

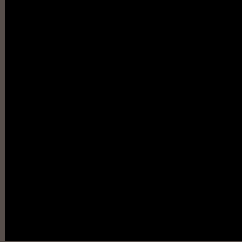
Any Text WCAG AA × Fail

Large Text (above 18pt) WCAG AAA × Fail

Any Text WCAG AAA × Fail

If you want to check with other color combinations, try the [Color Contrast Checker](#).

HunterLab 28.5065, 0.1853, 3.7239 Background



This preview shows how black text looks on a background with the HunterLab color 28.5065, 0.1853, 3.7239.



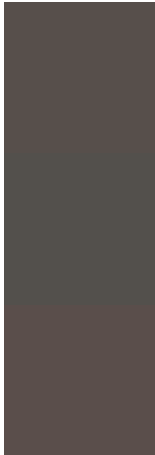
This preview shows how white text looks on a background with the HunterLab color 28.5065, 0.1853,

3.7239.

Color Blindness Simulation

Color vision deficiency is a very complex topic, and I could not describe the different causes any better than Wikipedia does, so if you want to learn more, you should check out their [article about color blindness](#).

Dichromacy



Original Color

28.5065, 0.1853, 3.7239

Protanopia

28.4572, -1.2476, 3.2676

Deuteranopia

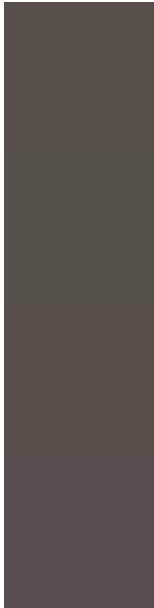
28.5139, 1.5013, 3.7551



Tritanopia

28.5720, 2.1592, 0.2387

Trichromacy



Original Color

28.5065, 0.1853, 3.7239

Protanomaly

28.5376, -0.9691, 3.3622

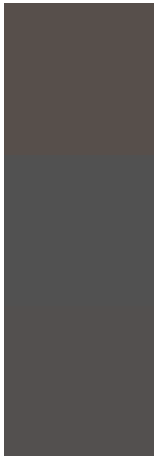
Deuteranomaly

28.4264, 1.2058, 3.6534

Tritanomaly

28.4913, 1.7272, 1.3869

Monochromacy



Original Color

28.5065, 0.1853, 3.7239

Achromatopsia

28.6850, -1.5306, 1.5585

Achromatomaly

28.5321, -0.8382, 2.1954

CSS Examples

Text

The CSS property to change the color of the text to HunterLab 28.5065, 0.1853, 3.7239 is called "color". The color property can be set on classes, ids or directly on the HTML element.

This example shows how text in the color `rgb(87, 79, 75)` looks like.

```
.text, #text, p{  
    color:rgb(87, 79, 75)  
}
```

If you want to add a text shadow in that color use the text-shadow property, you can generate a text shadow directly with our [CSS Text Shadow Generator](#).

Here you see how black text with a 4 pixel rgb(87, 79, 75) colored shadow looks like.

```
.shadow{ text-shadow: 4px 4px 2px rgb(87, 79, 75) }
```

Border

The CSS property to change the border of an element to HunterLab 28.5065, 0.1853, 3.7239 is called "border".

The border property can be set on classes, ids or directly on the HTML element.

This example shows the color as border, it can be applied via the CSS property "border" or "border-color".

```
.border, #border, table{ border:4px solid rgb(87, 79, 75) }
```


If only the border color should be changed use the property `border-color`.

```
.border{ border-color:rgb(87, 79, 75) }
```

If you want to add a box shadow in that color use:

Here you see how a box with a 4 pixel `rgb(87, 79, 75)` colored shadow looks like.

```
.boxshadow{ -moz-box-shadow:4px 4px 4px  
4px rgb(87, 79, 75); -webkit-box-  
shadow:4px 4px 4px 4px rgb(87, 79, 75);  
box-shadow:4px 4px 4px 4px rgb(87, 79, 75)  
}
```

Background

The CSS property to change the background color of an element to HunterLab 28.5065, 0.1853, 3.7239 is called "background". The background property can be set on classes, ids or directly on the HTML element.

```
.background, #background, body{  
background: rgb(87, 79, 75) }
```

If only the background color should be changed can be used:

```
.background{ background-color: rgb(87, 79,  
75) }
```

This example shows the color as background, it is applied via the CSS property "background".

To optimize and compress your CSS code, you can use our [online CSS compressor and optimizer](#) based on csstidy. If you want to create a linear or radial gradient as background or border, check our [CSS Gradient Generator](#).

Hey! You found this booklet interesting? Support Converting Colors with the new Membership Option!

The pro membership hides all ads, plus gives you double the colors in the color bucket, and more awesome pro features!

[Learn more, Memberships starting at \\$2.50/m!](#)

**Follow me
on Twitter!**

@ConvertingColor