

Converting Colors

HunterLab(28.6264, 1.9282,
3.5117)

Have a look what the booklet for
HunterLab(28.6264, 1.9282, 3.5117)
contains.

HunterLab(28.6264, 1.9282, 3.5117)	3
<i>Conversions</i>	4
<i>Details</i>	6
<i>Harmonies</i>	12
<i>Previews</i>	24
<i>Color Blindness Simulation</i>	28
<i>CSS Examples</i>	31

Color

**HunterLab(28.6264, 1.9282,
3.5117)**

Conversions

Conversions Part 1

Format	Color
Hex	5B4E4C
RGB	91, 78, 76
RGB Percent	36%, 31%, 30%
CMY	0.6431, 0.6941, 0.7020
CMYK	0.00, 0.14, 0.16, 0.64
HSL	8°, 9%, 33%
HSV	8°, 16%, 36%
XYZ	8.3433, 8.1947, 7.9795
YIQ	81.6590, 8.3900, 2.1340

Conversions

Conversions Part 2

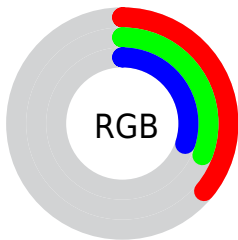
Format	Color
RYB	91, 78, 76
Decimal	5983820
CIELab	34.39, 5.03, 3.18
CIElCh	34, 5.953, 32.250
Yxy	8.1951, 0.3403, 0.3342
Android (android.graphics.Color)	4284173900 (0xFF5B4E4C)
YUV	81.6590, -2.7899, 8.1921
Hunter-Lab	28.6264, 1.9282, 3.5117

Details

The HunterLab color $[28.6264, 1.9282, 3.5117]$ is a dark color, and the websafe version is hex 666666 . A complement of this color would be $[30.7186, -4.7079, -0.2570]$, and the grayscale version is $[28.9320, -1.5437, 1.5719]$.

A 20% lighter version of the original color is $[47.2463, 1.4776, 4.7910]$, and $[13.4396, 1.9141, 2.2865]$ is the 20% darker color. If you saturate the color by 10%, you get $[26.5012, 4.2876, 4.5597]$, and if you desaturate by 10%, it is $[30.8534, -0.3224, 2.4503]$.

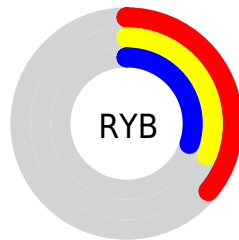
Distribution



Red (36%)

Green (31%)

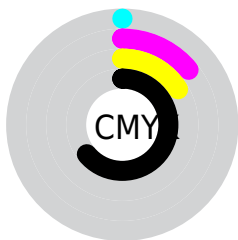
Blue (30%)



Red (36%)

Yellow (31%)

Blue (30%)

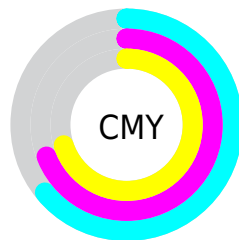


Cyan (0%)

Magenta (14%)

Yellow (16%)

Black (64%)



Cyan (64%)

Magenta (69%)

Yellow (70%)

Brightness & Saturation Gradients

These gradients show how the HunterLab color 28.6264, 1.9282, 3.5117 changes by changing the brightness by 10 percent. The first figure shows a shift by +10% for each color and the second figure -10%.

Similar to the brightness gradients but the following saturation gradients show a change of the HunterLab color 28.6264, 1.9282, 3.5117 by changing the saturation by 10% instead.

■ 28.6264, 1.9282,
3.5117

■ 28.6264, 1.9282,
3.5117

■ 133.1368, -1.4264,
10.5865

■ 20.5427, 2.0148,
2.8515

■ 47.2652, 1.5340,
4.9065

■ 13.4067, 2.0089,
2.2105

■ 57.6876, 1.2471,
5.6423

■ 6.9681, 2.7760,
2.2688

■ 68.7803, 0.9087,
6.4040

0.0000, NaN, NaN

0.0000, NaN, NaN

■ 80.5048, 0.5231,
7.1912

0.0000, NaN, NaN

■ 92.8289, 0.0940,
8.0036

0.0000, NaN, NaN

105.7247, -0.3755,

0.0000, NaN, NaN

119.1678, -0.8830,
9.7017

■ 28.6264, 1.9282,
3.5117

■ 28.6264, 1.9282,
3.5117

■ 26.5012, 4.2876,
4.5597

■ 30.8534, -0.3224,
2.4503

■ 24.4909, 6.7624,
5.5831

■ 33.1679, -2.4702,
1.3804

■ 22.6142, 9.3461,
6.5667

■ 35.5603, -4.5265,
0.3058

■ 20.8920, 12.0171,
7.4875

■ 38.0221, -6.5021,
-0.7713

■ 19.3487, 14.7284,
8.3131

■ 40.5463, -8.4074,
-1.8502

■ 18.0100, 17.3981,
9.0020

■ 43.1270, -10.2517,
-2.9304

■ 16.9010, 19.9050,
9.5085

■ 45.7592, -12.0433,
-4.0120

■ 16.0328, 22.0610,
9.9257

■ 48.4387, -13.7897,
-5.0952

■ 15.7817, 22.6873,
10.1218

■ 51.1620, -15.4970,
-6.1803

Harmonies

Analogous

The Analogous color harmony consists of three colors that are next to each other on the color wheel.



28.6270, 2.5717, 1.7070



28.6264, 1.9282, 3.5117



28.6270, 0.3543, 4.7205

Triad

The Triadic color harmony groups three colors that are evenly spaced from another and form a triangle on the color wheel.



28.6270, 1.9273, 3.5122



28.6270, -4.9782, 3.2713



28.6270, -1.3721, -2.5036

Complementary

The Complementary color scheme is a pair of colors which are on the opposite of each other on the color wheel.



28.6264, 1.9282, 3.5117



30.7186, -4.7079, -0.2570

Split Complementary

Split-complementary colors differ from the complementary color scheme. The scheme consists of three colors, the original color and two neighbors of the complement color.



28.6270, -3.3648, -2.0117



28.6264, 1.9282, 3.5117



28.6270, -5.4111, 1.4087

Square

The Square scheme is like the rectangle color scheme, but the four colors are evenly spaced on the color wheel.



28.6270, 1.9273, 3.5122



28.6270, -3.6290, 4.5885



28.6270, -4.8287, -0.5439



28.6270, 0.6333, -1.8444

Rectangle

The Rectangle color scheme consists of four colors that form a rectangle on the color wheel.



28.6264, 1.9282, 3.5117



28.6270, -0.9885, 5.0727



28.6270, -4.8287, -0.5439



28.6270, -2.0656, -2.4673

Sweetspot

The Sweet Spot groups the original color and five complimentary colors.



28.6270, 1.9273, 3.5122



40.7388, -0.8021, 3.0186



28.4858, 4.6796, -2.0370



19.9650, -0.3334, 1.5138



70.1359, -3.7423, 3.8106



20.7927, -1.1094, 1.1297

Same Dimension

The Same Dimension uses a secret algorithm to generate beautiful new colors.



28.6270, 1.9273, 3.5122



36.2657, 3.7780, 5.1615



30.5320, -1.3580, 5.5120



15.4636, 0.1011, 1.3778



19.0367, 28.1272, 12.2228



43.6401, 68.7621, 28.0946

Inverse Universe

The Inverse Universe completely reimagines the original color for something new.



30.7186, -4.7079, -0.2570



39.6680, -7.0300, -0.9728



28.7252, -1.4973, -2.7549



16.0408, -1.7269, 0.3383



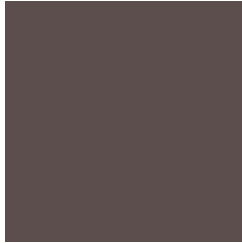
30.5051, -13.0721, -9.9098



70.7290, -29.7437, -24.1970

Previews

White Background



This preview shows how the HunterLab color 28.6264, 1.9282, 3.5117 looks on a white background.

Color Contrast Check

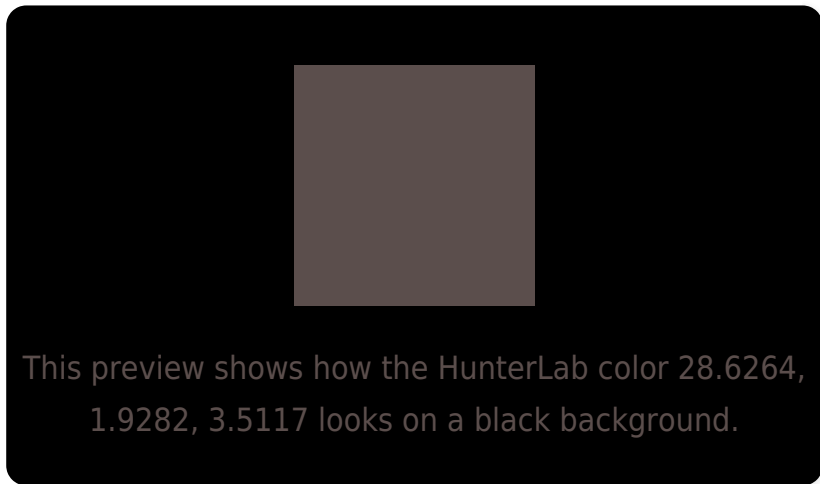
Large Text (above 18pt) WCAG AA ✓ Pass

Any Text WCAG AA ✓ Pass

Large Text (above 18pt) WCAG AAA ✓ Pass

Any Text WCAG AAA ✓ Pass

Black Background



Color Contrast Check

Large Text (above 18pt) WCAG AA × Fail

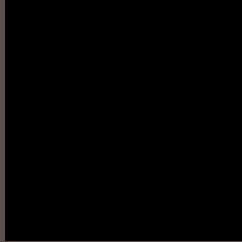
Any Text WCAG AA × Fail

Large Text (above 18pt) WCAG AAA × Fail

Any Text WCAG AAA × Fail

If you want to check with other color combinations, try the [Color Contrast Checker](#).

HunterLab 28.6264, 1.9282, 3.5117 Background



This preview shows how black text looks on a background with the HunterLab color 28.6264, 1.9282, 3.5117.



This preview shows how white text looks on a background with the HunterLab color 28.6264, 1.9282,

Color Blindness Simulation

Color vision deficiency is a very complex topic, and I could not describe the different causes any better than Wikipedia does, so if you want to learn more, you should check out their [article about color blindness](#).

Dichromacy



Original Color

28.6264, 1.9282, 3.5117

Protanopia

28.7397, -1.5432, 3.1975

Deuteranopia

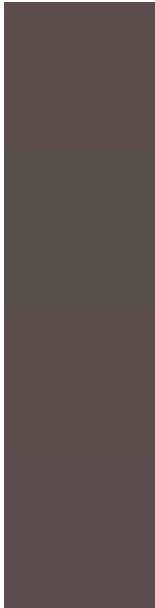
28.6264, 1.9282, 3.5117



Tritanopia

28.6489, 3.6273, 0.7805

Trichromacy



Original Color

28.6264, 1.9282, 3.5117

Protanomaly

28.7256, -0.2723, 3.2040

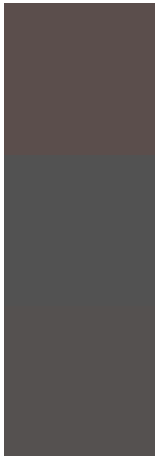
Deuteranomaly

28.6264, 1.9282, 3.5117

Tritanomaly

28.5697, 3.2068, 1.9105

Monochromacy



Original Color

28.6264, 1.9282, 3.5117

Achromatopsia

29.0476, -1.5499, 1.5782

Achromatomaly

28.9747, -0.5792, 2.3140

CSS Examples

Text

The CSS property to change the color of the text to HunterLab 28.6264, 1.9282, 3.5117 is called "color". The color property can be set on classes, ids or directly on the HTML element.

This example shows how text in the color `rgb(91, 78, 76)` looks like.

```
.text, #text, p{  
    color:rgb(91, 78, 76)  
}
```

If you want to add a text shadow in that color use the text-shadow property, you can generate a text shadow directly with our [CSS Text Shadow Generator](#).

Here you see how black text with a 4 pixel rgb(91, 78, 76) colored shadow looks like.

```
.shadow{ text-shadow: 4px 4px 2px rgb(91, 78, 76) }
```

Border

The CSS property to change the border of an element to HunterLab 28.6264, 1.9282, 3.5117 is called "border".

The border property can be set on classes, ids or directly on the HTML element.

This example shows the color as border, it can be applied via the CSS property "border" or "border-color".

```
.border, #border, table{ border:4px solid rgb(91, 78, 76) }
```


If only the border color should be changed use the property `border-color`.

```
.border{ border-color:rgb(91, 78, 76) }
```

If you want to add a box shadow in that color use:

Here you see how a box with a 4 pixel `rgb(91, 78, 76)` colored shadow looks like.

```
.boxshadow{ -moz-box-shadow:4px 4px 4px  
4px rgb(91, 78, 76); -webkit-box-  
shadow:4px 4px 4px 4px rgb(91, 78, 76);  
box-shadow:4px 4px 4px 4px rgb(91, 78, 76)  
}
```

Background

The CSS property to change the background color of an element to HunterLab 28.6264, 1.9282, 3.5117 is called "background". The background property can be set on classes, ids or directly on the HTML element.

```
.background, #background, body{  
background: rgb(91, 78, 76) }
```

If only the background color should be changed can be used:

```
.background{ background-color: rgb(91, 78,  
76) }
```

This example shows the color as background, it is applied via the CSS property "background".

To optimize and compress your CSS code, you can use our [online CSS compressor and optimizer](#) based on csstidy. If you want to create a linear or radial gradient as background or border, check our [CSS Gradient Generator](#).

Hey! You found this booklet interesting? Support Converting Colors with the new Membership Option!

The pro membership hides all ads, plus gives you double the colors in the color bucket, and more awesome pro features!

[Learn more, Memberships starting at \\$2.50/m!](#)

**Follow me
on Twitter!**

@ConvertingColor