

Converting Colors

HunterLab(28.6905, -0.6296,
4.9982)

Have a look what the booklet for
HunterLab(28.6905, -0.6296, 4.9982)
contains.

HunterLab(28.6905, -0.6296, 4.9982)	3
<i>Conversions</i>	4
<i>Details</i>	6
<i>Harmonies</i>	12
<i>Previews</i>	24
<i>Color Blindness Simulation</i>	28
<i>CSS Examples</i>	31

Color

**HunterLab(28.6905, -0.6296,
4.9982)**

Conversions

Conversions Part 1

Format	Color
Hex	575048
RGB	87, 80, 72
RGB Percent	34%, 31%, 28%
CMY	0.6588, 0.6863, 0.7176
CMYK	0.00, 0.08, 0.17, 0.66
HSL	32°, 9%, 31%
HSV	32°, 17%, 34%
XYZ	7.9689, 8.2314, 7.2997
YIQ	81.1810, 6.7400, -1.0040

Conversions

Conversions Part 2

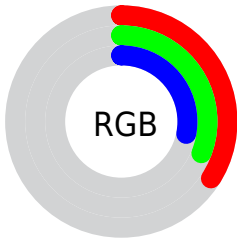
Format	Color
R_YB	85, 87, 72
Decimal	5722184
CIE Lab	34.46, 1.34, 5.75
CIE LCh	34, 5.906, 76.934
Yxy	8.2318, 0.3391, 0.3503
Android (android.graphics.Color)	4283912264 (0xFF575048)
YUV	81.1810, -4.5262, 5.1033
Hunter-Lab	28.6905, -0.6296, 4.9982

Details

The HunterLab color **28.6905, -0.6296, 4.9982** is a dark color, and the websafe version is hex **666666**. A complement of this color would be **27.6725, -2.0561, -2.3036**, and the grayscale version is **28.7653, -1.5348, 1.5629**.

A 20% lighter version of the original color is **47.3022, -1.4312, 6.8497**, and **13.5746, 0.0121, 3.2878** is the 20% darker color. If you saturate the color by 10%, you get **27.4765, 0.0983, 6.6898**, and if you desaturate by 10%, it is **29.9433, -1.2556, 3.1312**.

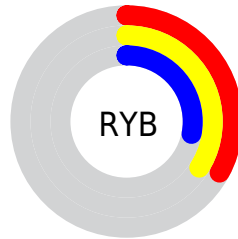
Distribution



Red (34%)

Green (31%)

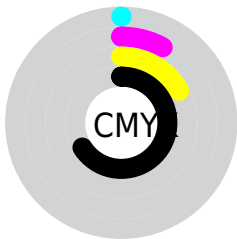
Blue (28%)



Red (33%)

Yellow (34%)

Blue (28%)

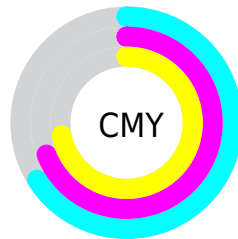


Cyan (0%)

Magenta (8%)

Yellow (17%)

Black (66%)



Cyan (66%)

Magenta (69%)

Yellow (72%)

Brightness & Saturation Gradients

These gradients show how the HunterLab color 28.6905, -0.6296, 4.9982 changes by changing the brightness by 10 percent. The first figure shows a shift by +10% for each color and the second figure -10%.

Similar to the brightness gradients but the following saturation gradients show a change of the HunterLab color 28.6905, -0.6296, 4.9982 by changing the saturation by 10% instead.

■ 28.6905, -0.6296,
4.9982

■ 28.6905, -0.6296,
4.9982

■ 133.2438, -5.6177,
13.2389

■ 20.6001, -0.2914,
4.1478

■ 47.3409, -1.4645,
6.7166

■ 13.4565, -0.0151,
3.2861

■ 57.7686, -1.9491,
7.5947

■ 7.0276, 0.4526,
3.7761

■ 68.8661, -2.4738,
8.4892

0.0000, NaN, NaN

0.0000, NaN, NaN

■ 80.5953, -3.0359,
9.4014

0.0000, NaN, NaN

■ 92.9238, -3.6331,
10.3321

0.0000, NaN, NaN

105.8237, -4.2635,

0.0000, NaN, NaN

11.2818

0.0000, NaN, NaN

119.2709, -4.9255,
12.2507

■ 28.6905, -0.6296,
4.9982

■ 28.6905, -0.6296,
4.9982

■ 27.4765, 0.0983,
6.6898

■ 29.9433, -1.2556,
3.1312

■ 26.3022, 0.9368,
8.1888

■ 31.2306, -1.7836,
1.1022

■ 25.1712, 1.8907,
9.4793

■ 32.5506, -2.2212,
-1.0745

■ 24.0865, 2.9644,
10.5448

■ 33.9011, -2.5747,
-3.3866

■ 23.0514, 4.1602,
11.3699

■ 35.2804, -2.8502,
-5.8227

■ 22.0691, 5.4778,
11.9417

■ 36.6866, -3.0535,
-8.3726

■ 21.1428, 6.9124,
12.2527

■ 38.1180, -3.1899,
-11.0274

■ 20.2663, 8.4098,
12.4336

■ 39.5734, -3.2645,
-13.7788

■ 20.0312, 8.8203,
12.4976

■ 41.0512, -3.2817,
-16.6197

Harmonies

Analogous

The Analogous color harmony consists of three colors that are next to each other on the color wheel.



28.6911, 1.2258, 4.1832



28.6905, -0.6296, 4.9982



28.6911, -2.6783, 4.9411

Triad

The Triadic color harmony groups three colors that are evenly spaced from another and form a triangle on the color wheel.



28.6911, -0.6304, 4.9986



28.6911, -5.2282, 0.4411



28.6911, 1.4224, -1.1353

Complementary

The Complementary color scheme is a pair of colors which are on the opposite of each other on the color wheel.



28.6905, -0.6296, 4.9982



27.6725, -2.0561, -2.3036

Split Complementary

Split-complementary colors differ from the complementary color scheme. The scheme consists of three colors, the original color and two neighbors of the complement color.



28.6911, -0.3683, -2.2863



28.6905, -0.6296, 4.9982



28.6911, -4.1903, -1.3330

Square

The Square scheme is like the rectangle color scheme, but the four colors are evenly spaced on the color wheel.



28.6911, -0.6304, 4.9986



28.6911, -5.2939, 2.4015



28.6911, -2.4234, -2.3611



28.6911, 2.4334, 0.6958

Rectangle

The Rectangle color scheme consists of four colors that form a rectangle on the color wheel.



28.6905, -0.6296, 4.9982



28.6911, -3.8765, 4.4163



28.6911, -2.4234, -2.3611



28.6911, 0.8895, -1.6201

Sweetspot

The Sweet Spot groups the original color and five complimentary colors.



28.6911, -0.6304, 4.9986



39.4624, -1.7938, 3.5558



26.8805, 3.8204, 0.3145



19.4580, -0.8712, 1.8091



69.0652, -3.6851, 3.7524



19.9203, -1.0629, 1.0823

Same Dimension

The Same Dimension uses a secret algorithm to generate beautiful new colors.



28.6911, -0.6304, 4.9986



36.7706, -0.4186, 7.5393



30.4739, -3.7639, 6.7835



15.0877, -0.5915, 1.7387



24.6403, 11.5383, 15.3852



56.8323, 30.8294, 35.5595

Inverse Universe

The Inverse Universe completely reimagines the original color for something new.



27.6725, -2.0561, -2.3036



35.1055, -2.7433, -4.4046



25.9229, 1.0981, -4.6303



14.8226, -0.9636, -0.1604



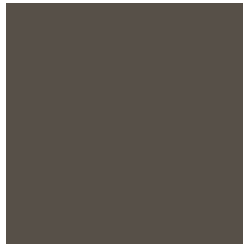
18.2812, 5.0950, -33.8485



41.2418, 16.3569, -86.8584

Previews

White Background



This preview shows how the HunterLab color 28.6905, -0.6296, 4.9982 looks on a white background.

Color Contrast Check

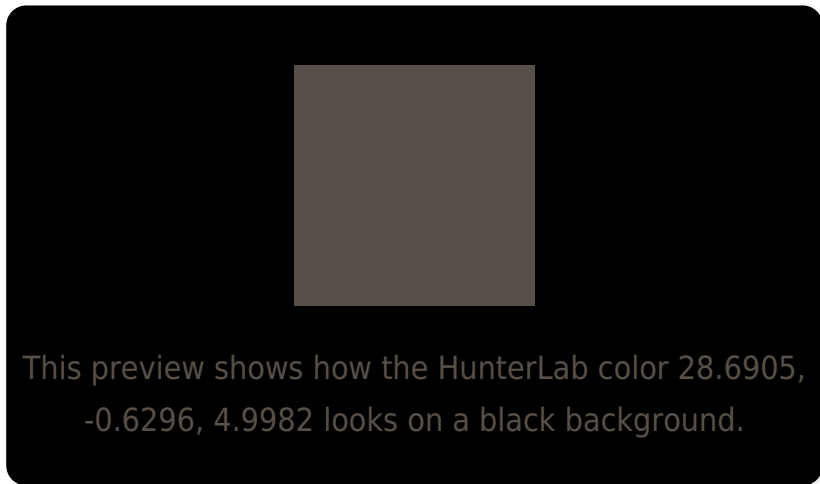
Large Text (above 18pt) WCAG AA ✓ Pass

Any Text WCAG AA ✓ Pass

Large Text (above 18pt) WCAG AAA ✓ Pass

Any Text WCAG AAA ✓ Pass

Black Background



Color Contrast Check

Large Text (above 18pt) WCAG AA × Fail

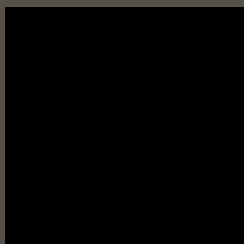
Any Text WCAG AA × Fail

Large Text (above 18pt) WCAG AAA × Fail

Any Text WCAG AAA × Fail

If you want to check with other color combinations, try the [Color Contrast Checker](#).

HunterLab 28.6905, -0.6296, 4.9982 Background



This preview shows how black text looks on a background with the HunterLab color 28.6905, -0.6296, 4.9982.

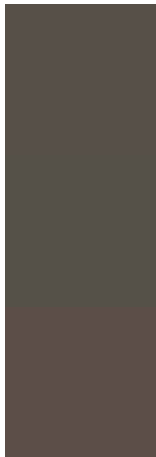


This preview shows how white text looks on a background with the HunterLab color 28.6905, -0.6296, 4.9982.

Color Blindness Simulation

Color vision deficiency is a very complex topic, and I could not describe the different causes any better than Wikipedia does, so if you want to learn more, you should check out their [article about color blindness](#).

Dichromacy



Original Color

28.6905, -0.6296, 4.9982

Protanopia

28.7820, -1.6321, 5.0773

Deuteranopia

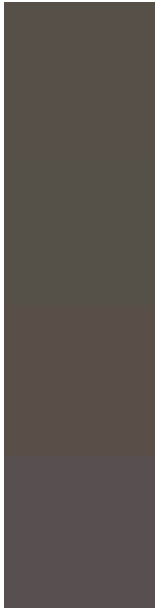
28.6216, 1.7236, 4.9665



Tritanopia

28.6578, 2.4464, 0.3488

Trichromacy



Original Color

28.6905, -0.6296, 4.9982

Protanomaly

28.8638, -1.3478, 5.1685

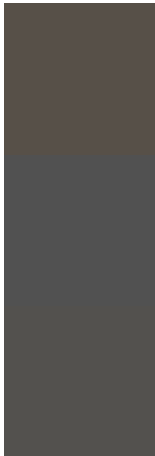
Deuteranomaly

28.6941, 0.6847, 5.0250

Tritanomaly

28.7156, 1.1455, 2.0444

Monochromacy



Original Color

28.6905, -0.6296, 4.9982

Achromatopsia

28.6850, -1.5306, 1.5585

Achromatomaly

28.7644, -1.4076, 2.8431

CSS Examples

Text

The CSS property to change the color of the text to HunterLab 28.6905, -0.6296, 4.9982 is called "color". The color property can be set on classes, ids or directly on the HTML element.

This example shows how text in the color `rgb(87, 80, 72)` looks like.

```
.text, #text, p{  
    color:rgb(87, 80, 72)  
}
```

If you want to add a text shadow in that color use the text-shadow property, you can generate a text shadow directly with our [CSS Text Shadow Generator](#).

Here you see how black text with a 4 pixel rgb(87, 80, 72) colored shadow looks like.

```
.shadow{ text-shadow: 4px 4px 2px rgb(87, 80, 72) }
```

Border

The CSS property to change the border of an element to HunterLab 28.6905, -0.6296, 4.9982 is called "border". The border property can be set on classes, ids or directly on the HTML element.

This example shows the color as border, it can be applied via the CSS property "border" or "border-color".

```
.border, #border, table{ border:4px solid rgb(87, 80, 72) }
```


If only the border color should be changed use the property `border-color`.

```
.border{ border-color:rgb(87, 80, 72) }
```

If you want to add a box shadow in that color use:

Here you see how a box with a 4 pixel `rgb(87, 80, 72)` colored shadow looks like.

```
.boxshadow{ -moz-box-shadow:4px 4px 4px  
4px rgb(87, 80, 72); -webkit-box-  
shadow:4px 4px 4px 4px rgb(87, 80, 72);  
box-shadow:4px 4px 4px 4px rgb(87, 80, 72)  
}
```

Background

The CSS property to change the background color of an element to HunterLab 28.6905, -0.6296, 4.9982 is called "background". The background property can be set on classes, ids or directly on the HTML element.

```
.background, #background, body{  
background: rgb(87, 80, 72) }
```

If only the background color should be changed can be used:

```
.background{ background-color: rgb(87, 80,  
72) }
```

This example shows the color as background, it is applied via the CSS property "background".

To optimize and compress your CSS code, you can use our [online CSS compressor and optimizer](#) based on csstidy. If you want to create a linear or radial gradient as background or border, check our [CSS Gradient Generator](#).

Hey! You found this booklet interesting? Support Converting Colors with the new Membership Option!

The pro membership hides all ads, plus gives you double the colors in the color bucket, and more awesome pro features!

[Learn more, Memberships starting at \\$2.50/m!](#)

**Follow me
on Twitter!**

@ConvertingColor