

Converting Colors

HunterLab(28.9342, 1.4790,
7.3519)

Have a look what the booklet for
HunterLab(28.9342, 1.4790, 7.3519)
contains.

HunterLab(29.0141, 1.5105, 7.3722)	3
<i>Conversions</i>	4
<i>Details</i>	6
<i>Harmonies</i>	12
<i>Previews</i>	24
<i>Color Blindness Simulation</i>	28
<i>CSS Examples</i>	31

Color

**HunterLab(29.0141, 1.5105,
7.3722)**

Conversions

Conversions Part 1

Format	Color
Hex	5F4F42
RGB	95, 79, 66
RGB Percent	37%, 31%, 26%
CMY	0.6275, 0.6902, 0.7412
CMYK	0.00, 0.17, 0.31, 0.63
HSL	27°, 18%, 32%
HSV	27°, 31%, 37%
XYZ	8.4986, 8.4182, 6.3312
YIQ	82.3020, 13.7090, -0.6510

Conversions

Conversions Part 2

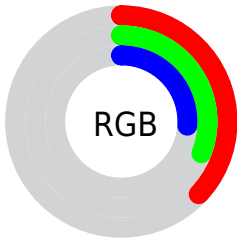
Format	Color
RYB	95, 90, 66
Decimal	6246210
CIELab	34.84, 4.45, 10.17
CIELCh	35, 11.102, 66.378
Yxy	8.4186, 0.3656, 0.3621
Android (android.graphics.Color)	4284436290 (0xFF5F4F42)
YUV	82.3020, -8.0369, 11.1361
Hunter-Lab	29.0141, 1.5105, 7.3722

Details

The HunterLab color $29.0141, 1.5105, 7.3722$ is a dark color, and the websafe version is hex 666666 . A complement of this color would be $28.3175, -3.3538, -5.2777$, and the grayscale version is $29.1825, -1.5571, 1.5855$.

A 20% lighter version of the original color is $47.7119, 1.0947, 9.6363$, and $13.7561, 1.5495, 5.0098$ is the 20% darker color. If you saturate the color by 10%, you get $27.5484, 2.8380, 8.8338$, and if you desaturate by 10%, it is $30.5389, 0.3062, 5.7247$.

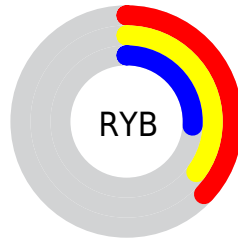
Distribution



 Red (37%)

 Green (31%)

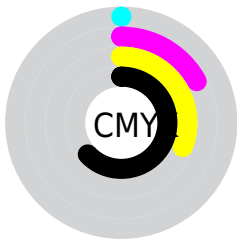
 Blue (26%)



 Red (37%)

 Yellow (35%)

 Blue (26%)

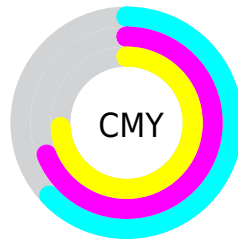


 Cyan (0%)

 Magenta (17%)

 Yellow (31%)

 Black (63%)



 Cyan (63%)

 Magenta (69%)

 Yellow (74%)

Brightness & Saturation Gradients

These gradients show how the HunterLab color 29.0141, 1.5105, 7.3722 changes by changing the brightness by 10 percent. The first figure shows a shift by +10% for each color and the second figure -10%.

Similar to the brightness gradients but the following saturation gradients show a change of the HunterLab color 29.0141, 1.5105, 7.3722 by changing the saturation by 10% instead.

■ 29.0141, 1.5105,
7.3722

■ 29.0141, 1.5105,
7.3722

■ 133.7831, -2.1191,
17.6870

■ 20.8900, 1.6397,
6.1778

■ 47.7232, 1.0417,
9.6716

■ 13.7082, 1.6818,
4.9152

■ 58.1770, 0.7215,
10.8037

■ 7.3198, 2.2573,
5.1239

■ 69.2991, 0.3517,
11.9345

0.0000, NaN, NaN

0.0000, NaN, NaN

■ 81.0515, -0.0635,
13.0685

0.0000, NaN, NaN

■ 93.4021, -0.5208,
14.2088

0.0000, NaN, NaN

0.0000, NaN, NaN

■ 106.3232, -1.0173,

15.3576

0.0000, NaN, NaN

119.7907, -1.5507,
16.5166

■ 29.0141, 1.5105,
7.3722

■ 29.0141, 1.5105,
7.3722

■ 27.5484, 2.8380,
8.8338

■ 30.5389, 0.3062,
5.7247

■ 26.1452, 4.2980,
10.0870

■ 32.1159, -0.7797,
3.9096

■ 24.8109, 5.8933,
11.1098

■ 33.7416, -1.7565,
1.9451

■ 23.5518, 7.6237,
11.8802

■ 35.4119, -2.6327,
-0.1534

■ 22.3744, 9.4826,
12.3791

■ 37.1236, -3.4166,
-2.3722

■ 21.2852, 11.4543,
12.5964

■ 38.8734, -4.1161,
-4.6994

■ 20.3254, 13.3336,
12.7578

■ 40.6588, -4.7384,
-7.1246

■ 42.4772, -5.2902,
-9.6390

■ 44.3265, -5.7776,
-12.2347

Harmonies

Analogous

The Analogous color harmony consists of three colors that are next to each other on the color wheel.



29.0148, 4.7229, 5.4913



29.0141, 1.5105, 7.3722



29.0148, -2.3761, 7.7994

Triad

The Triadic color harmony groups three colors that are evenly spaced from another and form a triangle on the color wheel.



29.0148, 1.5095, 7.3726



29.0148, -8.6169, 0.7776



29.0148, 3.0223, -4.7549

Complementary

The Complementary color scheme is a pair of colors which are on the opposite of each other on the color wheel.



29.0141, 1.5105, 7.3722



28.3175, -3.3538, -5.2777

Split Complementary

Split-complementary colors differ from the complementary color scheme. The scheme consists of three colors, the original color and two neighbors of the complement color.



29.0148, -0.7140, -6.4212



29.0141, 1.5105, 7.3722



29.0148, -7.3310, -2.9668

Square

The Square scheme is like the rectangle color scheme, but the four colors are evenly spaced on the color wheel.



29.0148, 1.5095, 7.3726



29.0148, -8.0911, 4.2889



29.0148, -4.4872, -5.7272



29.0148, 5.6280, -1.4197

Rectangle

The Rectangle color scheme consists of four colors that form a rectangle on the color wheel.



29.0141, 1.5105, 7.3722



29.0148, -4.7994, 7.2593



29.0148, -4.4872, -5.7272



29.0148, 1.8496, -5.5475

Sweetspot

The Sweet Spot groups the original color and five complimentary colors.



29.0148, 1.5095, 7.3726



42.2947, -1.1889, 4.8032



26.3538, 9.4696, -1.7495



20.6005, -0.5163, 2.4736



71.2094, -3.7996, 3.8689



21.6712, -1.1563, 1.1774

Same Dimension

The Same Dimension uses a secret algorithm to generate beautiful new colors.



29.0148, 1.5095, 7.3726



36.5115, 3.2763, 11.1203



32.6599, -4.5615, 10.6879



16.5979, -0.4848, 1.8455



24.0109, 16.4224, 15.0829



53.9318, 41.7827, 33.9640

Inverse Universe

The Inverse Universe completely reimagines the original color for something new.



28.3175, -3.3538, -5.2777



35.3822, -4.5680, -9.3495



24.7199, 2.7769, -10.6861



16.4914, -1.2318, -0.0889



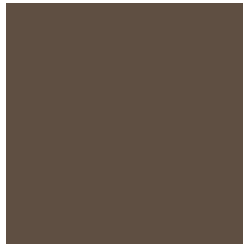
21.4666, 1.1217, -29.2529



47.7897, 5.8844, -72.4357

Previews

White Background



This preview shows how the HunterLab color 29.0141, 1.5105, 7.3722 looks on a white background.

Color Contrast Check

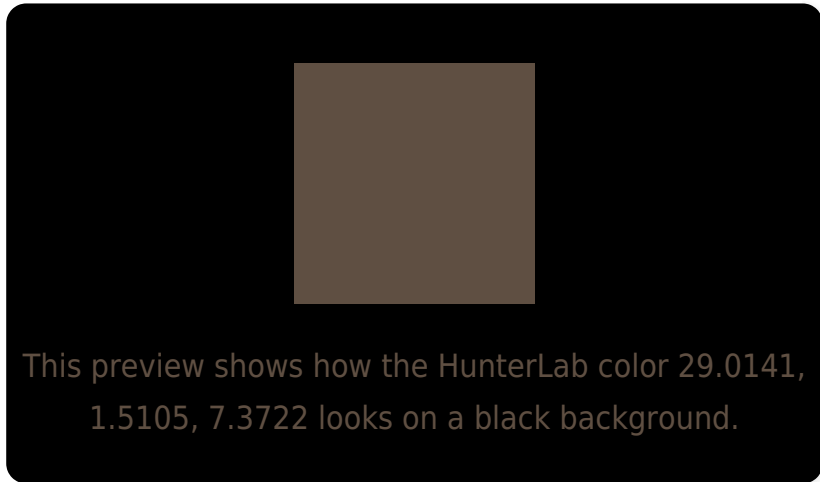
Large Text (above 18pt) WCAG AA ✓ Pass

Any Text WCAG AA ✓ Pass

Large Text (above 18pt) WCAG AAA ✓ Pass

Any Text WCAG AAA ✓ Pass

Black Background



Color Contrast Check

Large Text (above 18pt) WCAG AA × Fail

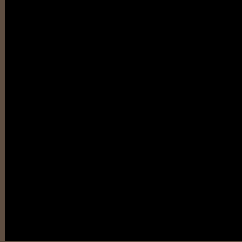
Any Text WCAG AA × Fail

Large Text (above 18pt) WCAG AAA × Fail

Any Text WCAG AAA × Fail

If you want to check with other color combinations, try the [Color Contrast Checker](#).

HunterLab 29.0141, 1.5105, 7.3722 Background



This preview shows how black text looks on a background with the HunterLab color 29.0141, 1.5105, 7.3722.

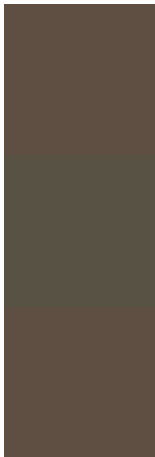


This preview shows how white text looks on a background with the HunterLab color 29.0141, 1.5105,

Color Blindness Simulation

Color vision deficiency is a very complex topic, and I could not describe the different causes any better than Wikipedia does, so if you want to learn more, you should check out their [article about color blindness](#).

Dichromacy



Original Color

29.0141, 1.5105, 7.3722

Protanopia

29.0965, -2.0808, 7.0721

Deuteranopia

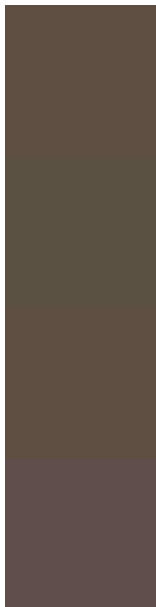
29.0141, 1.5105, 7.3722



Tritanopia

29.1096, 5.1353, 1.3588

Trichromacy



Original Color

29.0141, 1.5105, 7.3722

Protanomaly

29.0926, -0.7719, 7.0911

Deuteranomaly

29.0141, 1.5105, 7.3722

Tritanomaly

29.1057, 3.5725, 3.6948

Monochromacy



Original Color

29.0141, 1.5105, 7.3722

Achromatopsia

29.0476, -1.5499, 1.5782

Achromatomaly

29.0395, -0.5540, 3.9242

CSS Examples

Text

The CSS property to change the color of the text to HunterLab 29.0141, 1.5105, 7.3722 is called "color". The color property can be set on classes, ids or directly on the HTML element.

This example shows how text in the color `rgb(95, 79, 66)` looks like.

```
.text, #text, p{  
    color:rgb(95, 79, 66)  
}
```

If you want to add a text shadow in that color use the text-shadow property, you can generate a text shadow directly with our [CSS Text Shadow Generator](#).

Here you see how black text with a 4 pixel rgb(95, 79, 66) colored shadow looks like.

```
.shadow{ text-shadow: 4px 4px 2px rgb(95, 79, 66) }
```

Border

The CSS property to change the border of an element to HunterLab 29.0141, 1.5105, 7.3722 is called "border". The border property can be set on classes, ids or directly on the HTML element.

This example shows the color as border, it can be applied via the CSS property "border" or "border-color".

```
.border, #border, table{ border:4px solid rgb(95, 79, 66) }
```


If only the border color should be changed use the property border-color.

```
.border{ border-color:rgb(95, 79, 66) }
```

If you want to add a box shadow in that color use:

Here you see how a box with a 4 pixel rgb(95, 79, 66) colored shadow looks like.

```
.boxshadow{ -moz-box-shadow:4px 4px 4px  
4px rgb(95, 79, 66); -webkit-box-  
shadow:4px 4px 4px 4px rgb(95, 79, 66);  
box-shadow:4px 4px 4px 4px rgb(95, 79, 66)  
}
```

Background

The CSS property to change the background color of an element to HunterLab 29.0141, 1.5105, 7.3722 is called "background". The background property can be set on classes, ids or directly on the HTML element.

```
.background, #background, body{  
background: rgb(95, 79, 66) }
```

If only the background color should be changed can be used:

```
.background{ background-color: rgb(95, 79,  
66) }
```

This example shows the color as background, it is applied via the CSS property "background".

To optimize and compress your CSS code, you can use our [online CSS compressor and optimizer](#) based on csstidy. If you want to create a linear or radial gradient as background or border, check our [CSS Gradient Generator](#).

Hey! You found this booklet interesting? Support Converting Colors with the new Membership Option!

The pro membership hides all ads, plus gives you double the colors in the color bucket, and more awesome pro features!

[Learn more, Memberships starting at \\$2.50/m!](#)

**Follow me
on Twitter!**

@ConvertingColor