

# Converting Colors

HunterLab(29.0071, 1.9816,  
8.5029)

Have a look what the booklet for  
HunterLab(29.0071, 1.9816, 8.5029)  
contains.

<b>HunterLab(28.8755, 2.1585, 8.4730)</b> .....	3
<i><b>Conversions</b></i> .....	4
<i><b>Details</b></i> .....	6
<i><b>Harmonies</b></i> .....	12
<i><b>Previews</b></i> .....	24
<i><b>Color Blindness Simulation</b></i> .....	28
<i><b>CSS Examples</b></i> .....	31

# Color

**HunterLab(28.8755, 2.1585,  
8.4730)**

# Conversions

## Conversions Part 1

Format	Color
Hex	614E3E
RGB	97, 78, 62
RGB Percent	38%, 31%, 24%
CMY	0.6196, 0.6941, 0.7569
CMYK	0.00, 0.20, 0.36, 0.62
HSL	27°, 22%, 31%
HSV	27°, 36%, 38%
XYZ	8.5236, 8.3379, 5.7176
YIQ	81.8570, 16.4600, -0.9480

# Conversions

## Conversions Part 2

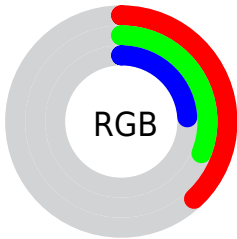
<b>Format</b>	<b>Color</b>
<b>RYB</b>	97, 91, 62
Decimal	6377022
CIELab	34.68, 5.37, 12.48
CIElCh	35, 13.585, 66.736
Yxy	8.3383, 0.3775, 0.3693
Android (android.graphics.Color)	4284567102 (0xFF614E3E)
YUV	81.8570, -9.7895, 13.2804
Hunter-Lab	28.8755, 2.1585, 8.4730

# Details

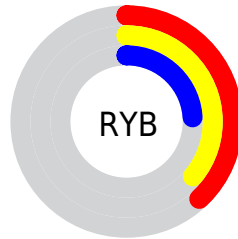
The HunterLab color **28.8755, 2.1585, 8.4730** is a dark color, and the websafe version is hex **666666**. A complement of this color would be **27.8779, -3.4115, -6.9337**, and the grayscale version is **29.0264, -1.5488, 1.5771**.

A 20% lighter version of the original color is **47.5399, 1.7246, 10.9261**, and **13.5924, 2.0173, 5.5240** is the 20% darker color. If you saturate the color by 10%, you get **27.4275, 3.5568, 9.8630**, and if you desaturate by 10%, it is **30.3857, 0.8906, 6.8759**.

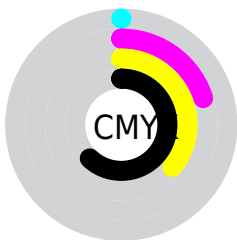
# Distribution



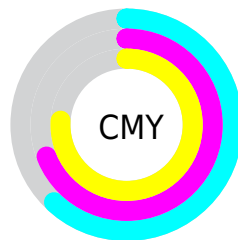
- Red (38%)
- Green (31%)
- Blue (24%)



- Red (38%)
- Yellow (36%)
- Blue (24%)



- Cyan (0%)
- Magenta (20%)
- Yellow (36%)
- Black (62%)



- Cyan (62%)
- Magenta (69%)
- Yellow (76%)

# Brightness & Saturation Gradients

These gradients show how the HunterLab color 28.8755, 2.1585, 8.4730 changes by changing the brightness by 10 percent. The first figure shows a shift by +10% for each color and the second figure -10%.

Similar to the brightness gradients but the following saturation gradients show a change of the HunterLab color 28.8755, 2.1585, 8.4730 by changing the saturation by 10% instead.



■ 28.8755, 2.1585,  
8.4730

■ 28.8755, 2.1585,  
8.4730

■ 133.5523, -1.0646,  
19.9059

■ 20.7658, 2.2254,  
7.0892

■ 47.5595, 1.7989,  
11.0894

■ 13.6003, 2.1981,  
5.6111

■ 58.0021, 1.5280,  
12.3590

■ 7.1963, 2.8648,  
5.0374

■ 69.1138, 1.2045,  
13.6173

0.0000, NaN, NaN

0.0000, NaN, NaN

■ 80.8562, 0.8332,  
14.8704

0.0000, NaN, NaN

■ 93.1974, 0.4179,  
16.1230

0.0000, NaN, NaN

0.0000, NaN, NaN

■ 106.1095, -0.0385,

17.3782

0.0000, NaN, NaN

119.5682, -0.5334,  
18.6386

■ 28.8755, 2.1585,  
8.4730

■ 28.8755, 2.1585,  
8.4730

■ 27.4275, 3.5568,  
9.8630

■ 30.3857, 0.8906,  
6.8759

■ 26.0453, 5.0940,  
11.0225

■ 31.9511, -0.2509,  
5.0917

■ 24.7355, 6.7711,  
11.9291

■ 33.5678, -1.2753,  
3.1400

■ 23.5045, 8.5848,  
12.5622

■ 35.2316, -2.1914,  
1.0380

■ 22.3585, 10.5248,  
12.9062

■ 36.9390, -3.0076,  
-1.1989

■ 21.2980, 12.5434,  
13.0395

■ 38.6867, -3.7321,  
-3.5574

■ 20.9018, 13.3248,  
13.1129

■ 40.4717, -4.3729,  
-6.0258

■ 42.2915, -4.9370,  
-8.5940

■ 44.1437, -5.4310,  
-11.2529

# Harmonies

## Analogous

The Analogous color harmony consists of three colors that are next to each other on the color wheel.



28.8762, 6.1542, 6.3040



28.8755, 2.1585, 8.4730



28.8762, -2.6066, 8.9423

# Triad

The Triadic color harmony groups three colors that are evenly spaced from another and form a triangle on the color wheel.



28.8762, 2.1574, 8.4734



28.8762, -10.0708, 0.5332



28.8762, 4.1309, -6.3010

# Complementary

The Complementary color scheme is a pair of colors which are on the opposite of each other on the color wheel.



28.8755, 2.1585, 8.4730



27.8779, -3.4115, -6.9337

# Split Complementary

Split-complementary colors differ from the complementary color scheme. The scheme consists of three colors, the original color and two neighbors of the complement color.



28.8762, -0.4623, -8.4655



28.8755, 2.1585, 8.4730



28.8762, -8.5086, -4.1277

# Square

The Square scheme is like the rectangle color scheme, but the four colors are evenly spaced on the color wheel.



28.8762, 2.1574, 8.4734



28.8762, -9.4691, 4.7996



28.8762, -5.0647, -7.6119



28.8762, 7.3441, -2.0778



# Rectangle

The Rectangle color scheme consists of four colors that form a rectangle on the color wheel.



28.8755, 2.1585, 8.4730



28.8762, -5.5405, 8.3091



28.8762, -5.0647, -7.6119



28.8762, 2.6860, -7.3221

# Sweetspot

The Sweet Spot groups the original color and five complimentary colors.



28.8762, 2.1574, 8.4734



42.8315, -0.9856, 5.4753



25.6604, 11.7671, -2.0829



21.2504, -0.4321, 2.8394



72.2857, -3.8570, 3.9274



22.5557, -1.2035, 1.2255



# Same Dimension

The Same Dimension uses a secret algorithm to generate beautiful new colors.



28.8762, 2.1574, 8.4734



36.2503, 4.3078, 12.6016



33.3447, -5.2818, 12.3507



16.6079, -0.5017, 1.8565



24.1903, 15.9940, 15.1860



54.3479, 40.7518, 34.2024



# Inverse Universe

The Inverse Universe completely reimagines the original color for something new.



27.8779, -3.4115, -6.9337



34.6637, -4.4938, -11.8763



23.5073, 4.1466, -13.9663



16.4812, -1.2150, -0.1012



21.2162, 1.5670, -29.9011

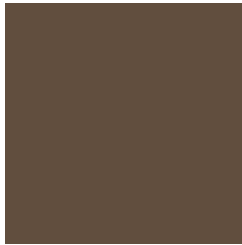


47.1882, 6.9975, -74.0869



# Previews

## White Background



This preview shows how the HunterLab color 28.8755, 2.1585, 8.4730 looks on a white background.

## Color Contrast Check

Large Text (above 18pt) WCAG AA ✓ Pass

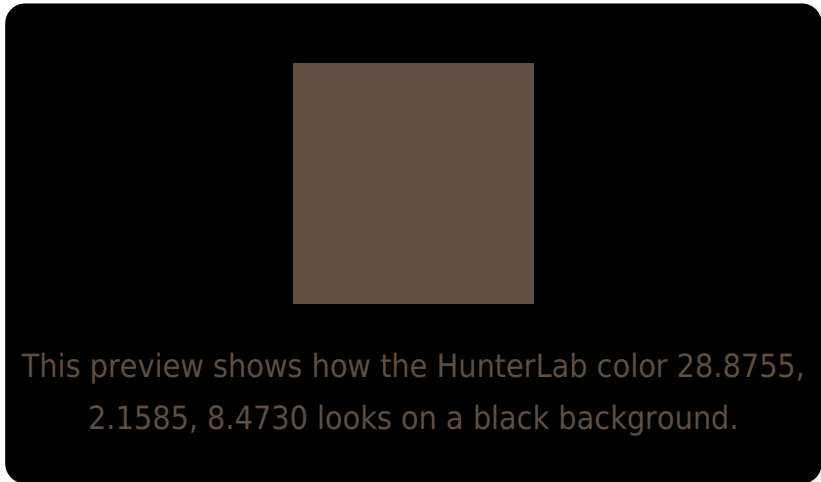
Any Text WCAG AA ✓ Pass

Large Text (above 18pt) WCAG AAA ✓ Pass

Any Text WCAG AAA ✓ Pass



# Black Background



## Color Contrast Check

Large Text (above 18pt) WCAG AA × Fail

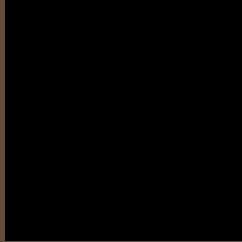
Any Text WCAG AA × Fail

Large Text (above 18pt) WCAG AAA × Fail

Any Text WCAG AAA × Fail

If you want to check with other color combinations, try the [Color Contrast Checker](#).

## HunterLab 28.8755, 2.1585, 8.4730 Background



This preview shows how black text looks on a background with the HunterLab color 28.8755, 2.1585, 8.4730.



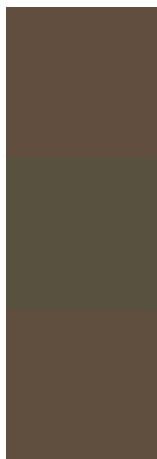
This preview shows how white text looks on a background with the HunterLab color 28.8755, 2.1585,

8.4730.

# Color Blindness Simulation

Color vision deficiency is a very complex topic, and I could not describe the different causes any better than Wikipedia does, so if you want to learn more, you should check out their [article about color blindness](#).

## Dichromacy



### Original Color

28.8755, 2.1585, 8.4730

### Protanopia

29.0362, -2.4128, 7.9453

### Deuteranopia

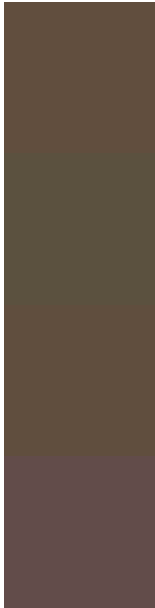
28.7809, 1.8408, 8.3783



## Tritanopia

28.7730, 6.3918, 1.8007

# Trichromacy



## Original Color

28.8755, 2.1585, 8.4730

## Protanomaly

29.0996, -0.9068, 8.3337

## Deuteranomaly

28.7809, 1.8408, 8.3783

## Tritanomaly

28.7402, 4.7169, 4.4271

# Monochromacy



## Original Color

28.8755, 2.1585, 8.4730

## Achromatopsia

29.0476, -1.5499, 1.5782

## Achromatomaly

29.0157, -0.6835, 4.2654

# CSS Examples

## Text

The CSS property to change the color of the text to HunterLab 28.8755, 2.1585, 8.4730 is called "color". The color property can be set on classes, ids or directly on the HTML element.

This example shows how text in the color `rgb(97, 78, 62)` looks like.

```
.text, #text, p{  
    color:rgb(97, 78, 62)  
}
```

If you want to add a text shadow in that color use the text-shadow property, you can generate a text shadow directly with our [CSS Text Shadow Generator](#).

Here you see how black text with a 4 pixel rgb(97, 78, 62) colored shadow looks like.

```
.shadow{ text-shadow: 4px 4px 2px rgb(97, 78, 62) }
```

## Border

The CSS property to change the border of an element to HunterLab 28.8755, 2.1585, 8.4730 is called "border". The border property can be set on classes, ids or directly on the HTML element.

This example shows the color as border, it can be applied via the CSS property "border" or "border-color".

```
.border, #border, table{ border:4px solid rgb(97, 78, 62) }
```



If only the border color should be changed use the property `border-color`.

```
.border{ border-color:rgb(97, 78, 62) }
```

If you want to add a box shadow in that color use:

Here you see how a box with a 4 pixel `rgb(97, 78, 62)` colored shadow looks like.

```
.boxshadow{ -moz-box-shadow:4px 4px 4px  
4px rgb(97, 78, 62); -webkit-box-  
shadow:4px 4px 4px 4px rgb(97, 78, 62);  
box-shadow:4px 4px 4px 4px rgb(97, 78, 62)  
}
```

# Background

The CSS property to change the background color of an element to HunterLab 28.8755, 2.1585, 8.4730 is called "background". The background property can be set on classes, ids or directly on the HTML element.

```
.background, #background, body{  
background: rgb(97, 78, 62) }
```

If only the background color should be changed can be used:

```
.background{ background-color: rgb(97, 78,  
62) }
```

This example shows the color as background, it is applied via the CSS property "background".

To optimize and compress your CSS code, you can use our [online CSS compressor and optimizer](#) based on csstidy. If you want to create a linear or radial gradient as background or border, check our [CSS Gradient Generator](#).

Hey! You found this booklet interesting? Support Converting Colors with the new Membership Option!

The pro membership hides all ads, plus gives you double the colors in the color bucket, and more awesome pro features!

**[Learn more, Memberships starting at \\$2.50/m!](#)**

**Follow me  
on Twitter!**

@ConvertingColor